

Model: Martini-P1		Date: 2-Mar-05	No.: MG126001
Modified Article: MT-P1 Parts Catalogue		Prepared by: S. Watanabe	
From: 2nd Tech. Support Sec. Service Support Dept.			
Reason for Modification:	<input type="checkbox"/> Parts catalog correction <input type="checkbox"/> Vendor change <input checked="" type="checkbox"/> Other <input type="checkbox"/> To facilitate assembly <input type="checkbox"/> To improve reliability <input type="checkbox"/> To meet standards <input type="checkbox"/> Part standardization <input type="checkbox"/> Product Safety ()		

PARTS CATALOG DIFFERENCES BETWEEN THE MT-P1 AND MT-C1/C2

- A Parts Catalog will not be released for the MT-P1 (G126), so refer to this RTB and the MT-C1/C2 Parts Catalog for the differences.
- The parts that are **highlighted in blue** are **unique to the MT-P1**.

Note: MT-P1 mass production begins from March 2005.

Model: Martini-P1	Date: 2-Mar-05	No.: MG126001
-------------------	----------------	---------------

1. EXTERIOR 1

- Unique parts: [See the table below.](#)
- All other parts: **Same** as MT-C1/C2.

New part number	Description	Q'ty	Page	Index	Note
G1267012	Model Name Plate - RIC AP900	1	15	12	
G1267015	Model Name Plate - GES P7575	1	15	12	
G1267016	Model Name Plate - NSH P7575	1	15	12	
G1267017	Model Name Plate - REX P7575	1	15	12	

Model: Martini-P1

Date: 2-Mar-05

No.: MG126001

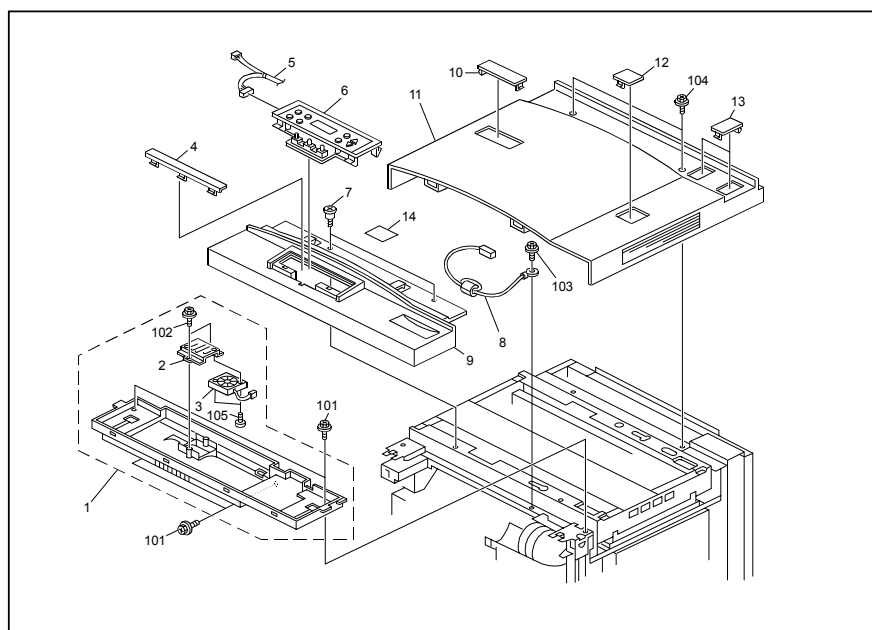
2. EXTERIOR 2

- Unique parts: [See the table below.](#)
- All other parts: **Same** as MT-C1/C2.

New part number	Description	Q'ty	Page	Index	Note
B0651243	Operation Panel Inner Cover	1		1	
B0651345	Fan Bracket	1		2	
AX640110	Axial Fan - MM40 24V	1		3	
G1261451	Lens LED	1		4	
G1265466	Harness - Scanner Unit	1		5	
G1261912	Operation Panel EXP	1		6	
AA143416	Stepped Screw - M4x3	2		7	
G1265406	Harness - OPU Earth	1		8	
G1261450	Cover Operation Panel	1		9	
G1261261	Cap Cover	1		10	
G1261260	Cover Upper	1		11	
B0651343	NCU Cap	1		12	
B0651344	G4 Cap	3		13	
G1261419	Decal: User Cautions	1		14	
04514008B	Philps Tapping Screw - M4x8	-		101	
04504008B	Tapping Screw - 4x8	-		102	
04514008N	Tapping Screw - M4x8	-		103	
04514010H	Tapping Screw - 4x10	-		104	
03130100B	Philps Pan Head Screw - M3x10	-		105	

Change: The parts in this table were added. Parts in P/C sections 3, 5, 7-10, 11, 12-13, 14, 15-18 were deleted.

Reason: The Scanner and ADF were deleted from this model.



Model: Martini-P1

Date: 2-Mar-05

No.: MG126001

3. OPERATION PANEL, 4. DF EXTERIOR, 5. DF ORIGINAL FEED, 7-10. DF ORIGINAL TRANSFER, 11. DF ORIGINAL EXIT, 12-13. DF DRIVE/ELECTRICAL, 14. DF FRAME SECTION, 15-18. OPTICS SECTION

- All parts: **Not used.**

19. LASER UNIT, 20-22. TANDEM TRAY, 23. UNIVERSAL TRAY, 24. BY-PASS FEED TRAY, 25-26. PAPER FEED UNIT, 27. VERTICAL TRANSPORT, 28-30. PAPER REGISTRATION, 31. TONER HOPPER SECTION, 32. TONER SUPPLY, 33-34. DEVELOPMENT, 35-38. PCU, 39-40. TRANSFER BELT UNIT

- All parts: **Same** as MT-C1/C2.

41-46. FUSING UNIT 1-6

- All parts: **Same** as **MT-C1.**

47-49. PAPER EXIT SECTION, 50-54. DUPLEX SECTION, 55-56. DRIVE SECTION, 57. TONER COLLECTION

- All parts: **Same** as MT-C1/C2.

58. ELECTRICAL SECTION 1

- Unique parts: [See the table below.](#)
- All other parts: **Same** as MT-C2.

New part number	Description	Q'ty	Page	Index	Note
G1265122	PCB: BCU (MT-P1)	1	129	3	

Change: This part was added.

Reason: 1) The Status Lamp ("LED Display") was added, and 2) the Scanner was deleted.

59,61-65. ELECTRICAL SECTION 2,4-8

- All parts: **Same** as MT-C2.

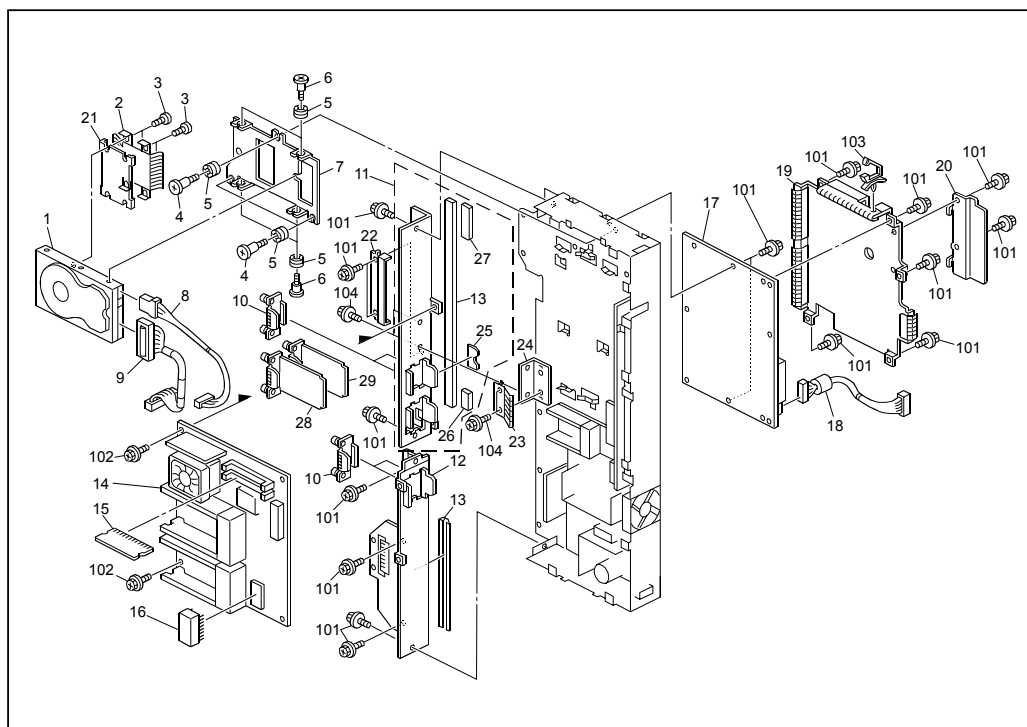
60. ELECTRICAL SECTION 3

- Unique parts: [See the table below.](#)
- All other parts: **Same** as MT-C2.

New part number	Description	Q'ty	Page	Index	Note
B5945660	PCB NIC Unit	1	133	28	New Index
B5955670	PCB - IEEE1284	1	133	29	New Index
G1265832	PCB Control Board Unit (MT-P1)	1	133	14	

Change: 1) The NIC Unit and IEEE1284 were added, and 2) the number of slots on the Control Board Unit was changed from 6→4.

Reason: 1) The NIC Unit and IEEE1284 are now standard parts, and 2) there are only four options available on this model.



66-68. UPPER FRAME, 69-70. LOWER FRAME

- All parts: **Same** as MT-C1/C2.