

Model: Kir-C		Date: 15-May-01	No.: RB040001
Subject: ROM History (Kir-C1 Copy Version)		Prepared by: K. Miura	
From: Technical Services Dept., GTS Division			
Classification:	<input type="checkbox"/> Troubleshooting <input type="checkbox"/> Part information <input type="checkbox"/> Action required <input type="checkbox"/> Mechanical <input type="checkbox"/> Electrical <input type="checkbox"/> Service manual revision <input type="checkbox"/> Paper path <input type="checkbox"/> Transmit/receive <input checked="" type="checkbox"/> Retrofit information <input type="checkbox"/> Other (      )		

Firmware history for the Kir-C1

USA Model

B0395531	File No. (B039uxxx)	Version	C.SUM	Production
A	001	1.10	A7AE	1st Mass Prod.

European Model

B0395532	File No. (B039exxx)	Version	C.SUM	Production
C	101	1.06	AF68	1st Mass Prod.
D	102	1.10	FDD1	May Prod. '01

Asian Model

B0395533	File No. (B039axxx)	Version	C.SUM	Production
A	001	1.10	2671	1st Mass Prod.

Model: Kir-C

Date: 15-May-01

No.: RB040001

Symptom Corrected	USA	EU	Asia
Black lines in halftone areas. Software modified so that no transfer current can be applied to the development roller surface after the main motor has stopped.	A	D	A
Change in detection conditions: To decrease unnecessary occurrences of SC350/392, the detection conditions have been changed as follows: 1) TD sensor 4V adjustment error must occur twice (check cycle is repeated). 2) Allowable interval (4V adjustment) changed from 80ms to 100ms.	A	D	A
If a tray (optional tray unit) is installed but not fully pushed in when the main power is turned on, there is no status display at all for that tray.	A	D	A
Specification change: If the Copy Reset Timer is set to "off", the Program User Code and Change User Code screens (Copy Features - Key Operator Tools) will not be cleared once the operator has started code input. Note: If enabled, the Energy Saver Timer and System Reset Timer will reset the screen (same as before).	A	D	A
Specification change: The key counter will not count up when the Printer Counter List is printed out.	A	D	A
When performed, SP7-808 (Reset Counters) would mistakenly clear the Copy, Fax, Printer, Duplex and A3/DLT counters. Note: This error did not affect (clear) the Total or Timer counters.	A	D	A
Despite key counter user restrictions, it is always possible to print out faxes. In addition, faxes are not recorded by the key counter (only by the total counter).	A	D	A
The Start Key does not turn green after the original scanning memory becomes full and the remaining originals are re-set for the next scanning (cannot continue). Conditions: SP5-940 (Image Rotation) = 1 (disabled). Rotation Sort is selected An even number of sets is programmed	A	D	A
In Text mode, Background Removal does not completely remove the background surrounding light text characters (e.g. text written in pencil).	A	D	A

Reissued: 21-May-01

Model: Kir-C	Date: 15-May-01	No.: RB040001a
--------------	-----------------	----------------

## RTB Correction

The items in bold italics have been corrected or added.

Subject: ROM History (Kir-C1 Copy Version)		Prepared by: K. Miura	
From: Technical Services Dept., GTS Division			
Classification:	<input type="checkbox"/> Troubleshooting	<input type="checkbox"/> Part information	<input type="checkbox"/> Action required
	<input type="checkbox"/> Mechanical	<input type="checkbox"/> Electrical	<input type="checkbox"/> Service manual revision
	<input type="checkbox"/> Paper path	<input type="checkbox"/> Transmit/receive	<input checked="" type="checkbox"/> Retrofit information
	<input type="checkbox"/> Other (      )		

Firmware history for the Kir-C1

### USA Model

B0395531	File No. (B039uxxx)	Version	C.SUM	Production
A	001	1.10	A7AE	1st Mass Prod.
<b><i>B</i></b>	<b><i>002</i></b>	<b><i>1.14</i></b>	<b><i>DE6A</i></b>	<b><i>June Prod. 01'</i></b>

### European Model

B0395532	File No. (B039exxx)	Version	C.SUM	Production
C	<b><i>001</i></b>	1.06	AF68	1st Mass Prod.
D	<b><i>002</i></b>	1.10	FDD1	May Prod. '01
<b><i>E</i></b>	<b><i>003</i></b>	<b><i>1.14</i></b>	<b><i>DE6A</i></b>	<b><i>June Prod. 01'</i></b>

### Asian Model

B0395533	File No. (B039axxx)	Version	C.SUM	Production
A	001	1.10	2671	1st Mass Prod.
<b><i>B</i></b>	<b><i>002</i></b>	<b><i>1.14</i></b>	<b><i>5827</i></b>	<b><i>June Prod. 01'</i></b>

**Reissued: 21-May-01**

Model: Kir-C	Date: 15-May-01	No.: RB040001a
--------------	-----------------	----------------

Symptom Corrected – see older RTBs for previous changes	USA	EU	Asia
<b><i>When SP4-942 (Black Line Erase) is set to "2", the image appears split into several horizontal lines.</i></b>	<b><i>B</i></b>	<b><i>E</i></b>	<b><i>B</i></b>
<b><i>Specification change:</i></b> <b><i>Firmware modified so that even when the machine is in the middle of a Key Counter copy job, incoming fax or printer jobs will be accepted.</i></b>	<b><i>B</i></b>	<b><i>E</i></b>	<b><i>B</i></b>
<b><i>The setting options for SP4-942 have been changed as follows:</i></b> <b><i>Old:               New:</i></b> <b><i>0: none           0: none</i></b> <b><i>                      1: weak</i></b> <b><i>1: weak          2: normal</i></b> <b><i>2: strong        3: strong</i></b>  <b><i>The level of the old "1: weak" is the same as the new "2: normal".</i></b>	<b><i>B</i></b>	<b><i>E</i></b>	<b><i>B</i></b>
<b><i>Specification change:</i></b> <b><i>As a countermeasure for fuzzy image borders, the transfer current for Special Mode (envelopes) and for the 2nd side of duplex prints has been changed.</i></b>	<b><i>B</i></b>	<b><i>E</i></b>	<b><i>B</i></b>
<b><i>When Special Mode (envelopes) is selected, the value for the paper slack set in SP1003 (Paper Feed Timing) is increased by 5 mm.</i></b>	<b><i>B</i></b>	<b><i>E</i></b>	<b><i>B</i></b>
Change in detection conditions: To decrease (unnecessary) occurrences of <b>SC392</b> , the detection conditions have been changed as follows: 1) TD sensor 4V adjustment error must occur twice (check cycle is repeated). 2) Allowable interval (4V adjustment) changed from 80ms to 100ms.	<b><i>A</i></b>	<b><i>D</i></b>	<b><i>A</i></b>

Model: Kir-C		Date: 23-May-01	No.: RB040002
Subject: Power Failure Report		Prepared by: M. Mano	
From: Technical Services Dept., GTS Division			
Classification:	<input type="checkbox"/> Troubleshooting <input type="checkbox"/> Mechanical <input type="checkbox"/> Paper path <input type="checkbox"/> Other (      )	<input type="checkbox"/> Part information <input type="checkbox"/> Electrical <input type="checkbox"/> Transmit/receive	<input type="checkbox"/> Action required <input type="checkbox"/> Service manual revision <input checked="" type="checkbox"/> Retrofit information

The following error was found on the **Power Failure Report** for the Kir-C1 Fax option:

**Sample:**

\* \* \* Power Failure Report ( 30. May. 2001 17:55) \* \* \*

FAX HEADER: RICOH GTS

This file has been erased after switch off.

Power Failure time: 17:55

---

0079 17:55 RX

- The 5<sup>th</sup> line (File, Time, Mode etc.) is not listed on the report

**The report should look like this:**

\* \* \* Power Failure Report (30. May. 2001 17:55) \* \* \*

FAX HEADER: RICOH GTS

This file has been erased after switch off.

Power Failure time: 17:55

File	Time	Mode	Destination	Result
0079	17:55	RX		

This correction will be applied from the first lot of June 2001 production.

Model: Kir-C		Date: 24-May-01	No.: RB040003
Subject: Note for replacing the Drum Shutter Gear		Prepared by: K. Miura	
From: Technical Services Dept., GTS Division			
Classification:	<input checked="" type="checkbox"/> Troubleshooting <input checked="" type="checkbox"/> Mechanical <input type="checkbox"/> Paper path <input type="checkbox"/> Other (      )	<input type="checkbox"/> Part information <input type="checkbox"/> Electrical <input type="checkbox"/> Transmit/receive	<input type="checkbox"/> Action required <input type="checkbox"/> Service manual revision <input type="checkbox"/> Retrofit information

## SYMPTOM

When re-installing the Drum Shutter Gear (B0392362), if there is a gap between the Drum Shutter Gear and Drum Front Side Plate (B0392361), the drum shutter will not open fully. See the photo images on the next page.

## CAUSE

The gap causes the Drum Shutter Gear to rotate less.

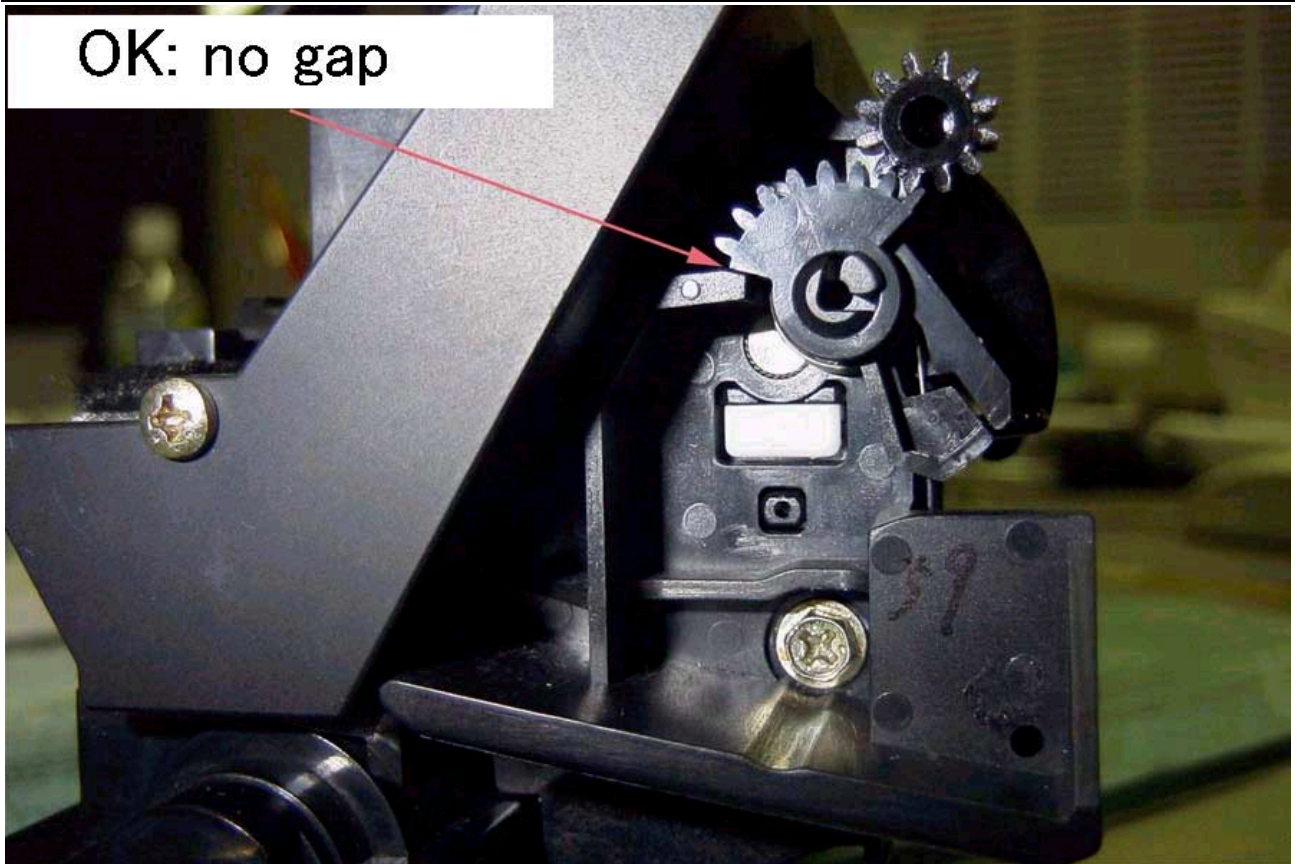
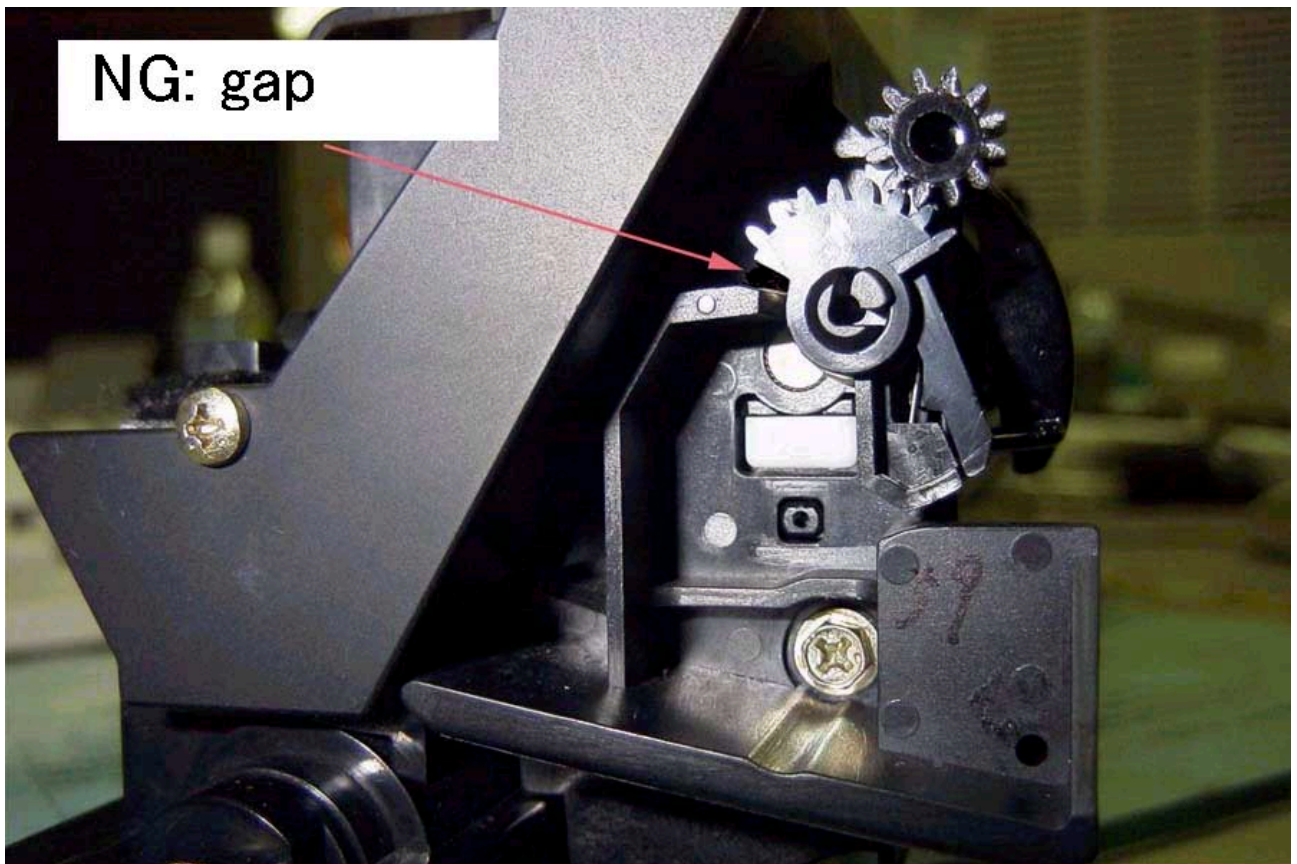
## SOLUTION

When re-installing, it is necessary to confirm that there is no gap between the shutter gear and front side plate. A Drum Shutter Stopper (B0392325) has been added from May 2001 production to ensure that the Drum Shutter Gear and Drum Front Side Plate are held flush together with no gap.

Model: Kir-C

Date: 24-May-01

No.: RB040003

**OK: no gap****NG: gap**

Model: Kir-C		Date: 31-May-01	No.: RB040004
Subject: Paper Size Sensor Feeler detaches at installation		Prepared by: K. Miura	
From: Technical Services Dept., GTS Division			
Classification:	<input checked="" type="checkbox"/> Troubleshooting <input type="checkbox"/> Mechanical <input type="checkbox"/> Paper path <input type="checkbox"/> Other (      )	<input type="checkbox"/> Part information <input type="checkbox"/> Electrical <input type="checkbox"/> Transmit/receive	<input type="checkbox"/> Action required <input type="checkbox"/> Service manual revision <input type="checkbox"/> Retrofit information

## SYMPTOM

The ADF Paper Size Sensor Feeler (B3871941) sometimes detaches when the ADF is removed from the package.

## CAUSE

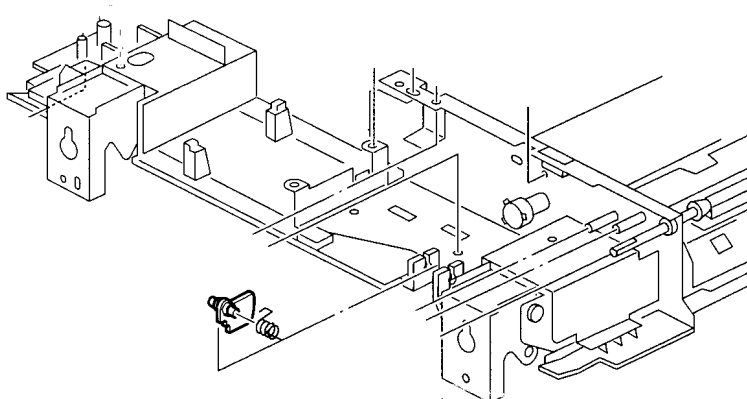
There are slight variations in shaft width, which can sometimes cause the feeler to detach if the shaft is too thin.

## SOLUTION

When installing the ADF, check that the Paper Size Sensor Feeler is properly in place. If it comes off, re-set the feeler.

### Important:

Note that this only occurs at installation. Since the feeler will normally stay attached during operation, it is not necessary to replace it when this occurs. The feeler shaft and surrounding areas have been fortified from May 2001 production (suffix change).





Model: Kir-C		Date: 06-Jun-01	No.: RB040005
Subject: ROM History (Kir-C1 Printer Option)		Prepared by: M. Mano	
From: Technical Services Dept., GTS Division			
Classification:	<input type="checkbox"/> Troubleshooting <input type="checkbox"/> Part information <input type="checkbox"/> Action required <input type="checkbox"/> Mechanical <input type="checkbox"/> Electrical <input type="checkbox"/> Service manual revision <input type="checkbox"/> Paper path <input type="checkbox"/> Transmit/receive <input checked="" type="checkbox"/> Retrofit information <input type="checkbox"/> Other (      )		

Firmware history for the Kir-C1 Printer Option.

B4055280	Version	C.SUM	Production
A	1.00	5E8C	1st Mass Prod.
<b>B</b>	<b>1.02</b>	<b>43B1</b>	<b>May Prod. '01</b>

Symptom Corrected	Suffix
<b><i>PCL5e font download cannot be performed.</i></b>	<b><i>B</i></b>
<b><i>While the copier is in standby mode with the printer on-line, the printer is taken off-line after entering and then exiting Printer Settings using the User Tools Key.</i></b>	<b><i>B</i></b>

Model: Kir-C		Date: 06-Jun-01	No.: RB040006
Subject: ROM History (Kir-C1 Fax Option)		Prepared by: M. Mano	
From: Technical Services Dept., GTS Division			
Classification:	<input type="checkbox"/> Troubleshooting <input type="checkbox"/> Part information <input type="checkbox"/> Action required <input type="checkbox"/> Mechanical <input type="checkbox"/> Electrical <input type="checkbox"/> Service manual revision <input type="checkbox"/> Paper path <input type="checkbox"/> Transmit/receive <input checked="" type="checkbox"/> Retrofit information <input type="checkbox"/> Other (      )		

Firmware history for the Kir-C1 Fax Option.

NA

B4045582	Version	C.SUM	Production
B	01.12.00	7265	1st Mass Prod.
C	03.06.00	C968	June Prod. '01

Europe

B4045584	Version	C.SUM	Production
C	01.14.00	F758	December Prod. '99
D	03.06.00	9923	June Prod. '01

Asia

B4045587	Version	C.SUM	Production
	02.06.00	CC81	1st Mass Prod.
A	03.06.00	B99C	June Prod. '01

Symptom Corrected	USA	EU	Asia
<i>Nothing is displayed in the Dedicated Transmission Parameter screen when Finnish has been selected as the display language.</i>	-	D	-
<i>The colon (":") is not displayed between the switch number and bit string for User Parameter SW 18 onward.</i>	C	D	" "
<i>Titles are not listed in the Power Failure Report (e.g. File, Time, Mode). Please see related RTB# RB040002.</i>	C	D	A
<i>When system switch 1E bit 2 (RTI/CSI display priority) = 1 (CSI), the machine displays "○" at the end of the other terminal's CSI. e.g. +813123456789○</i>	C	D	" "

Model: Kir-C (EU/Asia version only)		Date: 29-Jun-01	No.: RB040007
Subject: Paper Size Detection Error		Prepared by: K. Miura	
From: Technical Services Dept., GTS Division			
Classification:	<input checked="" type="checkbox"/> Troubleshooting	<input type="checkbox"/> Part information	<input type="checkbox"/> Action required
	<input type="checkbox"/> Mechanical	<input type="checkbox"/> Electrical	<input type="checkbox"/> Service manual revision
	<input type="checkbox"/> Paper path	<input type="checkbox"/> Transmit/receive	<input type="checkbox"/> Retrofit information
	<input type="checkbox"/> Other (      )		

## SYMPTOM

When the customer sets an A4 SEF original, the machine incorrectly detects LG instead of A4 SEF.

## CAUSE

The APS detects the platen cover itself because it activates the platen cover sensor. There are two causes as follows:

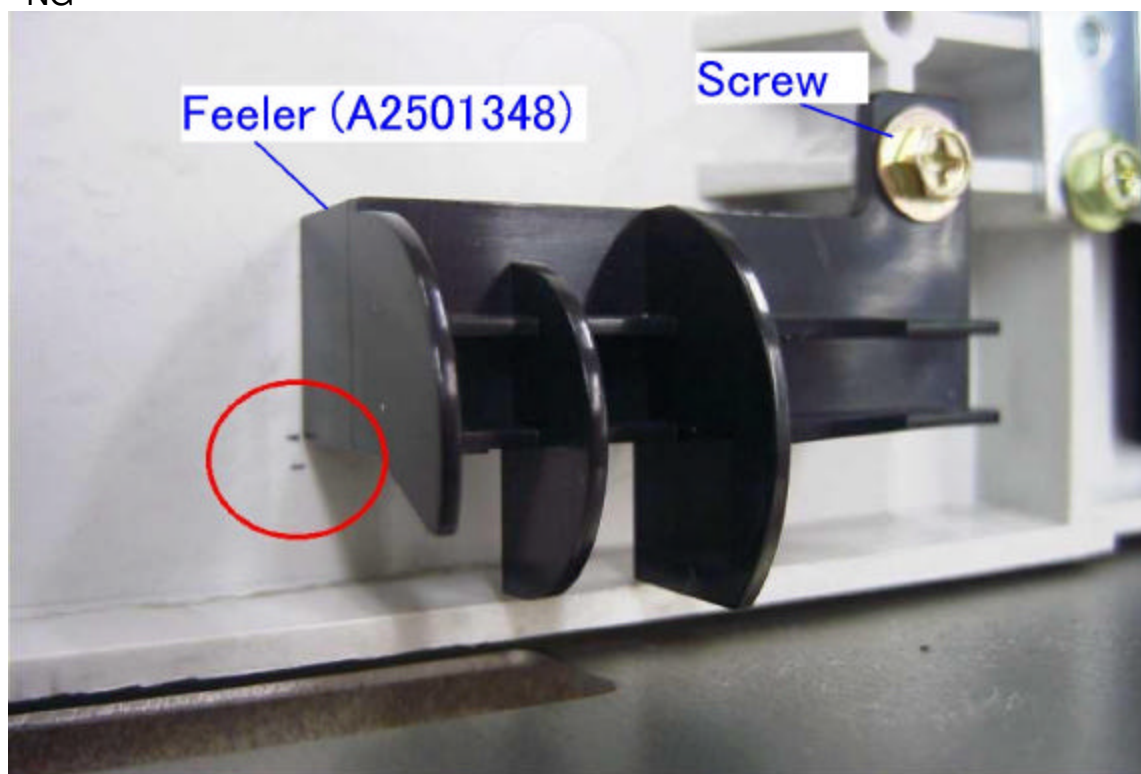
1. The Platen Cover Feeler (A2501348) is held in place by a screw. However, the screw hole is a little wide and the feeler may not be fixed at the right position. When it is not fixed at the right position, the APS sensor is placed closer to the platen cover than the standard and it detects the platen cover. If the APS sensor detects the platen cover, the machine cannot make the right decision for the document size (see the attached "NG" file and service manual P. 6-11).
2. The APS sensor is closer to the rear of the machine than it was on the previous model. This places the APS sensor closer to the platen cover and causes it to detect the platen cover.

The APS sensor should not detect the platen cover if there is no paper on the exposure glass.

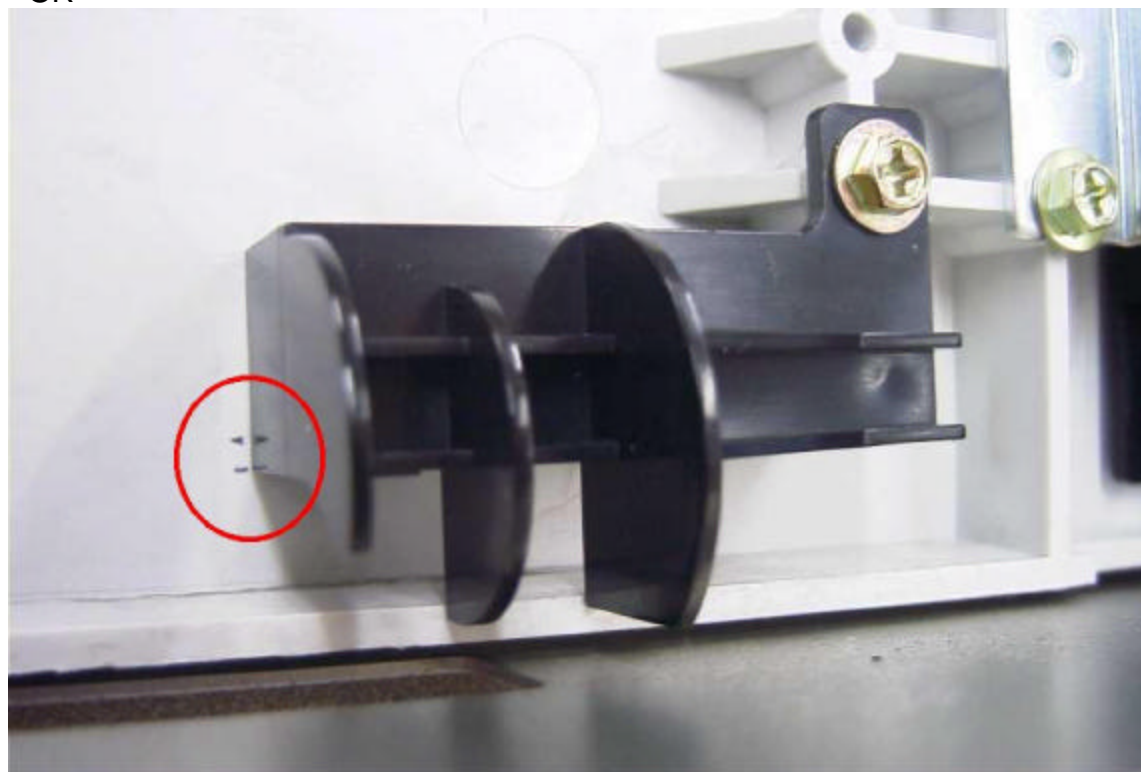
## SOLUTION

For a temporary solution, adjust the position of the feeler as shown in the attached "OK" picture. For the final solution, we will change the shape of the feeler to determine the paper size at a deeper angle.

- NG -



- OK -



Model: Kir-C		Date: 12-Jul-01	No.: RB040008
Subject: Original Jam with ADF (Kir-C1 Fax option)		Prepared by: M. Mano	
From: Technical Services Dept., GTS Division			
Classification:	<input checked="" type="checkbox"/> Troubleshooting	<input type="checkbox"/> Part information	<input type="checkbox"/> Action required
	<input type="checkbox"/> Mechanical	<input type="checkbox"/> Electrical	<input type="checkbox"/> Service manual revision
	<input type="checkbox"/> Paper path	<input type="checkbox"/> Transmit/receive	<input type="checkbox"/> Retrofit information
	<input type="checkbox"/> Other (      )		

## Symptom

The third original fed by the ADF (B387) will jam when all three of the following conditions occur:

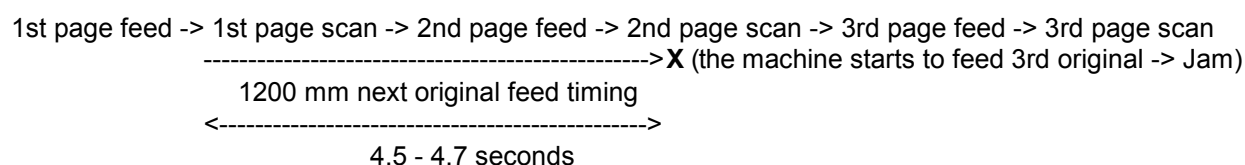
- User Parameter SW 14 (0E: Maximum document length detection: Well log) bit 1 = 1 (1200 mm).
- The actual length of each original is less than 1200 mm.
- Three or more originals are fed by the DF in Immediate Transmission mode (only).

**NOTE:** This does not occur with the B379 ARDF.

## Cause

Once scanning for the 1st original begins, the machine begins a timer, which will expire after it feeds 1200 mm (4.5-4.7 s). When this timer expires, it is in the middle of feeding the 2nd sheet, at which time the paper feed clutch turns on. The 3rd sheet is then fed, collides with the 2nd sheet and causes the jam.

Please see the following diagram:



## Countermeasure

As an individual countermeasure, please replace the B387 ADF ROM with the new ROM we sent to all regional head distributors.

These new ROMs instruct the machine to rely on the actual length of the original detected by the ADF. This countermeasure will be applied from August '01 mass production.

Model: Kir-C		Date: 12-Jul-01	No.: RB040009
Subject: ROM History (Kir-C1 Printer Option)		Prepared by: M. Mano	
From: Technical Services Dept., GTS Division			
Classification:	<input type="checkbox"/> Troubleshooting <input type="checkbox"/> Part information <input type="checkbox"/> Action required <input type="checkbox"/> Mechanical <input type="checkbox"/> Electrical <input type="checkbox"/> Service manual revision <input type="checkbox"/> Paper path <input type="checkbox"/> Transmit/receive <input checked="" type="checkbox"/> Retrofit information <input type="checkbox"/> Other (      )		

Firmware history for the Kir-C1 Printer Option

B4055280	Version	C.SUM	Production
A	1.00	5E8C	1st Mass Prod.
B	1.02	43B1	May Prod. '01
C	1.04	8997	July Prod. '01

Symptom Corrected	Suffix
PCL5e Font Download cannot be performed.	B
While the copier is in standby mode with the printer on-line, the printer is taken off-line after entering and then exiting Printer Settings using the User Tools Key.	B
<b><i>After a decimal number is entered in [Font Pitch] from [Printer Features]-[Job Control]-[PCL Menu], the digits to the right of the decimal point may be displayed differently on the LCD.</i></b>	C
<b><i>When printing out w/a cover page from a Mac client, text characters appear larger if the resolution has been set to 300dpi in [Printer Features]-[Job Control]-[Print Quality].</i></b>	C
<b><i>When both Frame Border and Rotate are enabled, the frame border does not appear.</i></b>	C

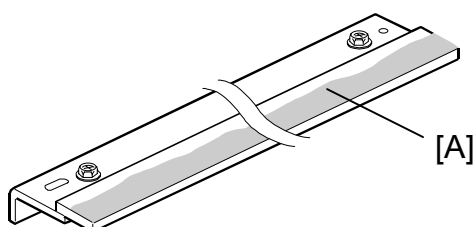
Model: Kir-C		Date: 18-Jul-01	No.: RB040010
Subject: Applying Toner To The Cleaning Blade		Prepared by: K. Miura	
From: Technical Services Dept., GTS Division			
Classification:	<input type="checkbox"/> Troubleshooting <input type="checkbox"/> Mechanical <input type="checkbox"/> Paper path <input type="checkbox"/> Other (      )	<input type="checkbox"/> Part information <input type="checkbox"/> Electrical <input type="checkbox"/> Transmit/receive	<input checked="" type="checkbox"/> Action required <input type="checkbox"/> Service manual revision <input type="checkbox"/> Retrofit information

To ensure proper cleaning blade operation, apply toner to the edge of the cleaning blade after replacement. This will also prevent any possible damage to the OPC drum and blade.

The procedure is as follows:

1. Remove the old cleaning blade.
2. Install the new blade.
3. With your finger, remove some of the toner that is on the old blade and apply it to the edge [A] of the new blade.

**Note:** Make sure to apply the toner evenly along the full length of the new cleaning blade.



Reissued: 31-Jul-01

Model: Kir-C	Date: 15-May-01	No.: RB040001b
--------------	-----------------	----------------

## RTB Correction

The items in bold italics have been corrected or added.

Subject: ROM History (Kir-C1 Copy Version)		Prepared by: K. Miura	
From: Technical Services Dept., GTS Division			
Classification:	<input type="checkbox"/> Troubleshooting	<input type="checkbox"/> Part information	<input type="checkbox"/> Action required
	<input type="checkbox"/> Mechanical	<input type="checkbox"/> Electrical	<input type="checkbox"/> Service manual revision
	<input type="checkbox"/> Paper path	<input type="checkbox"/> Transmit/receive	<input checked="" type="checkbox"/> Retrofit information
	<input type="checkbox"/> Other (      )		

Firmware history for the Kir-C1

### USA Model

B0395531	File No. (B039uxxx)	Version	C.SUM	Production
A	001	1.10	A7AE	1st Mass Prod.
B	002	1.14	DE6A	June Prod. '01'
<b>C</b>	-	-	-	<b>No Production</b>
<b>D</b>	<b>003</b>	<b>1.23</b>	<b>12FC</b>	<b>August Prod. '01'</b>

### European Model

B0395532	File No. (B039exxx)	Version	C.SUM	Production
C	001	1.06	AF68	1st Mass Prod.
D	002	1.10	FDD1	May Prod. '01'
E	003	1.14	DE6A	June Prod. '01'
<b>F</b>	-	-	-	<b>No Production</b>
<b>G</b>	<b>004</b>	<b>1.23</b>	<b>F03F</b>	<b>August Prod. '01'</b>

### Asian Model

B0395533	File No. (B039axxx)	Version	C.SUM	Production
A	001	1.10	2671	1st Mass Prod.
B	002	1.14	5827	June Prod. '01'
<b>C</b>	-	-	-	<b>No Production</b>
<b>D</b>	<b>003</b>	<b>1.23</b>	<b>20D0</b>	<b>August Prod. '01'</b>



**Reissued: 31-Jul-01**

Model: Kir-C	Date: 15-May-01	No.: RB040001b
--------------	-----------------	----------------

Symptom Corrected	USA	EU	Asia
<b>The message when trying to make a duplex copy using 5 1/2"x8 1/2" paper size has been changed as follows: OLD: Cannot Duplex Copy / This Size Paper NEW: Cannot Duplex Copy / This Paper Size</b>	<b>D</b>	<b>G</b>	<b>D</b>
<b>The message when trying to sort using a long original has been changed as follows: OLD: Cannot Sort This Size Paper NEW: Cannot Sort This Paper Size</b>	<b>D</b>	<b>G</b>	<b>D</b>
<b>The range of the value for SP1-105 has been changed as follows (the Service Manual is correct): OLD: 160 ~ 230 °C NEW: 160 ~ 190 °C</b>	<b>D</b>	<b>G</b>	<b>D</b>
<b>When turning the main switch on/off when using combine copy, SC 922 may appear.</b>	<b>D</b>	<b>G</b>	<b>D</b>
<b>After clearing an image rotation DF jam, the copy taken with the exposure glass contains an "Obi" image (a thick, belt-like banding pattern) along with highly reduced copies of the original. Settings: APS, 50% redction, 3 originals (A3).</b>	<b>D</b>	<b>G</b>	<b>D</b>
<b>In the middle of a combine copy job (exposure glass), the "Set Next + Start ..." message is not re-displayed following the brief error message triggered by the user entering a copy quantity that exceeds the maximum limit.</b>	<b>D</b>	<b>G</b>	<b>D</b>
<b>The following message, which pops up inside the User Tools when the # and Start Key are pressed, remains displayed even when the user exits by pressing the User Tools key: "Press Ok to return the copier settings to default. If not, press cancel."</b>	<b>D</b>	<b>G</b>	<b>D</b>
<b>SC123 sometimes occurs when fax transmission is initiated while the machine is receiving.</b>	<b>D</b>	<b>G</b>	<b>D</b>
<b>When SP4-942 (Black Line Erase) is set to "2", the image appears split into several horizontal lines.</b>	<b>B</b>	<b>E</b>	<b>B</b>
<b>Specification change: Firmware modified so that even when the machine is in the middle of a Key Counter copy job, incoming fax or printer jobs will be accepted.</b>	<b>B</b>	<b>E</b>	<b>B</b>
<b>The setting options for SP4-942 have been changed as follows: Old:           New: 0: none        0: none                   1: weak 1: weak       2: normal 2: strong      3: strong</b>	<b>B</b>	<b>E</b>	<b>B</b>
<b>Therefore, the level of the old "1: weak" is the same as the new "2: normal".</b>			
<b>Specification change: As a countermeasure for fuzzy image borders, the transfer current for Special Mode (envelopes) and for the 2nd side of Duplex prints has been changed.</b>	<b>B</b>	<b>E</b>	<b>B</b>
<b>When Special Mode (envelopes) is selected, the value for the paper stack set in SP1-003 (Paper Feed Timing) is increased by 5mm.</b>	<b>B</b>	<b>E</b>	<b>B</b>

**Reissued: 31-Jul-01**

Model: Kir-C	Date: 15-May-01	No.: RB040001b
--------------	-----------------	----------------

Symptom Corrected	USA	EU	Asia
Black lines in halftone areas. Software modified so that no transfer current can be applied to the development roller surface after the main motor has stopped.	A	D	A
Change in detection conditions: To decrease (unnecessary) occurrences of SC392, the detection conditions have been changed as follows: 1) TD sensor 4V adjustment error must occur twice (check cycle is repeated). 2) Allowable interval (4V adjustment) changed from 80ms to 100ms.	A	D	A
If a tray (optional tray unit) is installed but not fully pushed in when the main power is turned on, there is no status display at all for that tray.	A	D	A
Specification change: If the Copy Reset Timer is set to "off", the Program User Code and Change User Code screens (Copy Features - Key Operator Tools) will not be cleared once the operator has started code input. Note: If enabled, the Energy Saver Timer and System Reset Timer will reset the screen (same as before).	A	D	A
Specification change: The key counter will not count up when the Printer Counter List is printed out.	A	D	A
When performed, SP7-808 (Reset Counters) would mistakenly clear the Copy, Fax, Printer, Duplex and A3/DLT counters. Note: This error did not affect (clear) the Total or Timer counters.	A	D	A
Despite key counter user restrictions, it is always possible to print out faxes. In addition, faxes are not recorded by the key counter (only by the total counter).	A	D	A
The Start Key does not turn green after the original scanning memory becomes full and the remaining originals are re-set for the next scanning (cannot continue). *Conditions: SP5-940 (Image Rotation) = 1 (disabled). Rotation Sort is selected An even # of sets is programmed	A	D	A
In Text mode, Background Removal does not completely remove the background surrounding light text characters (e.g. text written in pencil).	A	D	A

Model: Kir-C		Date: 08-Aug-01	No.: RB040011
Subject: Service Manual Correction		Prepared by: M. Mano	
From: Technical Services Dept., GTS Division			
Classification:	<input type="checkbox"/> Troubleshooting <input type="checkbox"/> Part information <input type="checkbox"/> Action required		
	<input type="checkbox"/> Mechanical <input type="checkbox"/> Electrical <input type="checkbox"/> Service manual revision		
	<input type="checkbox"/> Paper path <input type="checkbox"/> Transmit/receive <input checked="" type="checkbox"/> Retrofit information		
	<input type="checkbox"/> Other (      )		

Please correct the following misprint in your Kir-C1 Fax Option Service Manuals.  
The Auto Document function does not exist for this option.

## 2. FEATURES

### 2.1 FEATURES LIST

Incorrect:

Communication Features – User Selectable	
Auto Document	<input type="radio"/>

Correct:

Communication Features – User Selectable	
Auto Document	<input checked="" type="checkbox"/>

Reissued: 10-Aug-01

Model: Kir-C	Date: 15-May-01	No.: RB040001c
--------------	-----------------	----------------

## RTB Correction

The items in bold italics have been corrected or added.

Subject: ROM History (Kir-C1 Copy Version)		Prepared by: K. Miura	
From: Technical Services Dept., GTS Division			
Classification:	<input type="checkbox"/> Troubleshooting	<input type="checkbox"/> Part information	<input type="checkbox"/> Action required
	<input type="checkbox"/> Mechanical	<input type="checkbox"/> Electrical	<input type="checkbox"/> Service manual revision
	<input type="checkbox"/> Paper path	<input type="checkbox"/> Transmit/receive	<input checked="" type="checkbox"/> Retrofit information
	<input type="checkbox"/> Other (      )		

Firmware history for the Kir-C1.

### USA Model

B0395531	File No. (B039uxxx)	Version	C.SUM	Production
A	001	1.10	A7AE	1st Mass Prod.
B	002	1.14	DE6A	June Prod. '01'
C	-	-	-	No Production
D	003	1.23	12FC	August Prod. '01'

### European Model

B0395532	File No. (B039exxx)	Version	C.SUM	Production
C	001	1.06	AF68	1st Mass Prod.
D	002	1.10	FDD1	May Prod. '01
E	003	1.14	DE6A	June Prod. '01'
F	-	-	-	No Production
G	004	1.23	F03F	August Prod. '01'

### Asian/Taiwanese Model

B0395533	File No. (B039axxx)	Version	C.SUM	Production
A	001	1.10	2671	1st Mass Prod.
B	002	1.14	5827	June Prod. '01'
C	-	-	-	No Production
D	003	1.23	20D0	August Prod. '01'
<b><i>E</i></b>	<b><i>004</i></b>	<b><i>1.24</i></b>	<b><i>F8DE</i></b>	<b><i>September Prod. '01'</i></b>

### Chinese Model

B0395535	File No. (B039cxxx)	Version	C.SUM	Production
<b><i>A</i></b>	<b><i>001</i></b>	<b><i>1.24</i></b>	<b><i>40B8</i></b>	<b><i>1st Mass Prod.</i></b>

Symptom Corrected (new changes only)	USA	EU	Asia	China
<b><i>Start of Chinese and Taiwanese model production.</i></b>	-	-	<b><i>E</i></b>	<b><i>A</i></b>

Model: Kir-C		Date: 20-Aug-01	No.: RB040012
Subject: 1st Scanner Reflector Peeling		Prepared by: K. Miura	
From: Technical Services Dept., GTS Division			
Classification:	<input checked="" type="checkbox"/> Troubleshooting <input type="checkbox"/> Mechanical <input type="checkbox"/> Paper path <input type="checkbox"/> Other (      )	<input type="checkbox"/> Part information <input type="checkbox"/> Electrical <input type="checkbox"/> Transmit/receive	<input type="checkbox"/> Action required <input type="checkbox"/> Service manual revision <input type="checkbox"/> Retrofit information

## SYMPTOM

SC122, noise from the scanner and/or jittering in half-tone areas.

## CAUSE

The rear reflector of the 1st scanner is misaligned, impacting the inner frame of the scanner unit when the scanner moves.

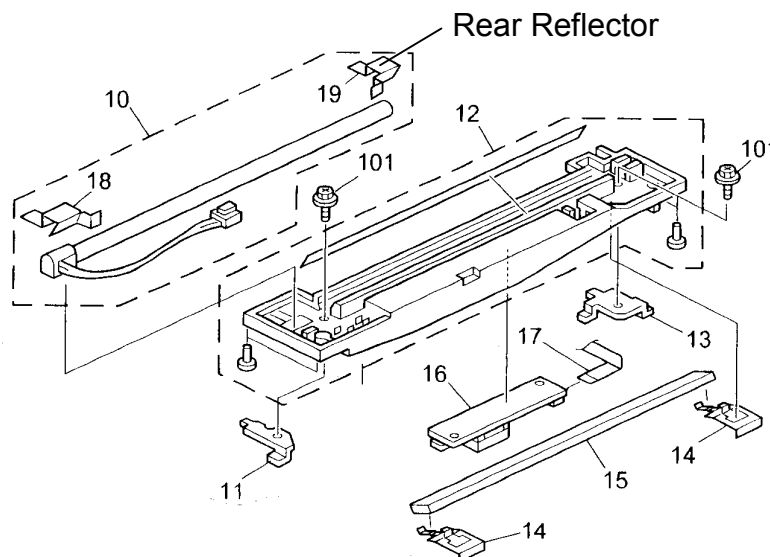
## SOLUTION

Perform a scanner free run with SP4-013 to determine if the rear reflector is out of position.

If it is out of position:

1. Turn off the main power and remove the exposure glass and top rear cover.
2. Remove the misaligned reflector and replace it with a new one.

**Note:** The right side has a tendency to peel off if the reflector is not secured properly. Therefore please make sure to firmly attach it using your fingernail to iron out any potentially un-smooth areas.



Model: Kir-C		Date: 30-Aug-01	No.: RB040013
Subject: Creasing / Reduced ID Lines		Prepared by: K. Miura	
From: Technical Services Dept., GTS Division			
Classification:	<input checked="" type="checkbox"/> Troubleshooting <input type="checkbox"/> Part information <input type="checkbox"/> Action required <input type="checkbox"/> Mechanical <input type="checkbox"/> Electrical <input type="checkbox"/> Service manual revision <input type="checkbox"/> Paper path <input type="checkbox"/> Transmit/receive <input type="checkbox"/> Retrofit information <input type="checkbox"/> Other (      )		

## SYMPTOM

Diagonal creases or reduced ID lines appear near the lower right (trailing edge) of A3 or 11" x 17" copies.

## CAUSE

As the paper is transported from the transfer section to the fusing unit, the paper slack becomes unbalanced as the left edge twists toward the back as it passes over the roller. The left edge is then stretched inside the fusing unit ahead of the right, and the resulting stress causes low ID lines on the copy (or creases if the stress is high).

Detailed description:

1. As the registration rollers move the paper along, if one side (left or right) of the paper moves faster than the other, the paper becomes misaligned which causes a side-to-side difference in slack before reaching the fusing unit.
2. With nearly blank copies, the actual speed at which the paper moves along is slightly lower (normally, the un-fused toner decreases the friction with the roller, and this increases the speed). Therefore in these cases the amount of slack in the paper is also lower, which makes it more susceptible to stress and easier for creases to form.
3. Paper with relatively low stiffness is more sensitive to small amounts of stress, which can more easily lead to the reduced ID lines and creasing.

## SOLUTION

### Temporary

If either the reduced ID lines or creasing occurs in the field, please switch the attachment position of the rear hook of the pressure roller spring (there are only 2 possible attachment positions).

### Permanent

We will be issuing an MB when the cut-in serial numbers for the following modifications have been confirmed:

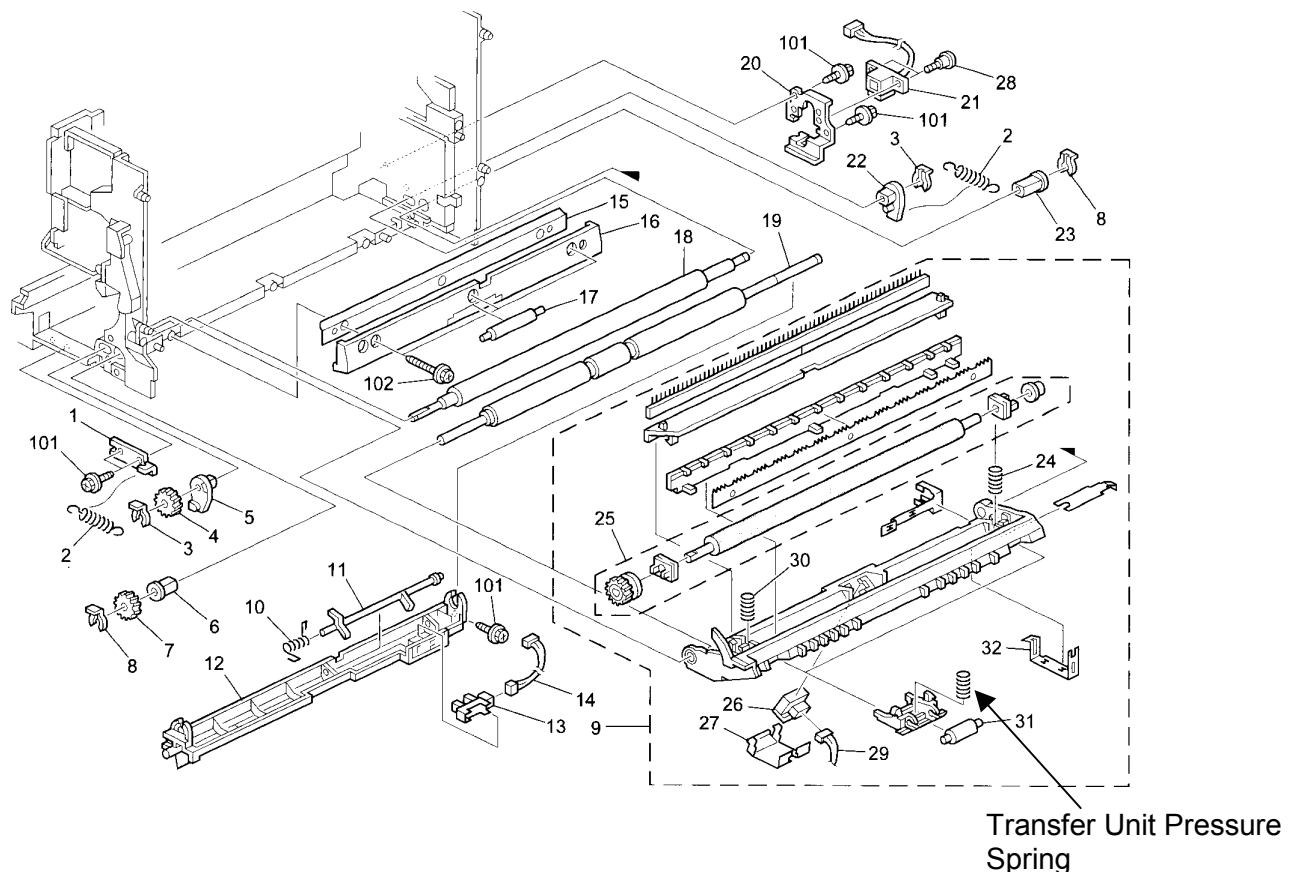
1. Stabilize the actual speed of the paper when transported by the registration rollers:

- Increase the contact (flat) area of the registration drive roller from 110mm->200mm.
- Apply grease to the bushings of the registration drive roller.
- Increase the thickness of the registration paper dust cleaning Mylar from 0.188 -> 0.1mm.

2. Ensure that the contact pressure between the transfer roller and the OPC drum is equal at both edges of the roller:

- Decrease the tension of the transfer unit pressure spring to -> 10N.

**Note:** This spring is not an existing service part; please see the illustration below.



Reissued: 27-Sep-01

Model: Kir-C	Date: 12-Jul-01	No.: RB040009a
--------------	-----------------	----------------

## RTB Correction

The items in bold italics have been corrected or added.

Subject: ROM History (Kir-C1 Printer Option)		Prepared by: K. Miura	
From: Technical Services Dept., GTS Division			
Classification:	<input type="checkbox"/> Troubleshooting <input type="checkbox"/> Mechanical <input type="checkbox"/> Paper path <input type="checkbox"/> Other (      )	<input type="checkbox"/> Part information <input type="checkbox"/> Electrical <input type="checkbox"/> Transmit/receive	<input type="checkbox"/> Action required <input type="checkbox"/> Service manual revision <input checked="" type="checkbox"/> Retrofit information

Firmware history for the Kir-C1 Printer Option.

## General

B4055280	Version	C.SUM	Production
A	1.00	5E8C	1st Mass Prod.
B	1.02	43B1	May Prod. '01
C	1.04	8997	July Prod. '01
<b><i>B4055285</i></b>	<b><i>1.00</i></b>	<b><i>A6C9</i></b>	<b><i>October Prod. '01</i></b>

## Chinese/Taiwanese

<b><i>B4055286</i></b>	<b><i>Version</i></b>	<b><i>C.SUM</i></b>	<b><i>Production</i></b>
<b><i>No suffix</i></b>	<b><i>1.00</i></b>	<b><i>D370</i></b>	<b><i>1st Mass Prod.</i></b>

Symptom Corrected	General	CHN/TWN
PCL5e Font Download cannot be performed.	<b><i>B4055280B</i></b>	—
While the copier is in standby mode with the printer on-line, the printer is taken off-line after entering and then exiting Printer Settings using the User Tools Key.	B	—
After a decimal number is entered in [Font Pitch] from [Printer Features]-[Job Control]-[PCL Menu], the digits to the right of the decimal point may be displayed differently on the LCD.	C	—
When printing out w/a cover page from a Mac client, text characters appear larger if the resolution has been set to 300dpi in [Printer Features]-[Job Control]-[Print Quality].	C	—
When both the frame border and Rotate are enabled, the frame border does not appear.	C	—
<b><i>Start of mass production for China and Taiwan models.</i></b>	—	<b><i>B4055286</i></b>
<b><i>Start of mass production for duplex model.</i></b>	<b><i>B4055285</i></b>	—



Reissued: 03-Oct-01

Model: Kir-C	Date: 15-May-01	No.: RB040001d
--------------	-----------------	----------------

## RTB Correction

The items in bold italics have been corrected or added.

Subject: ROM History (Kir-C1 Copy Version)		Prepared by: K. Miura	
From: Technical Services Dept., GTS Division			
Classification:	<input type="checkbox"/> Troubleshooting <input type="checkbox"/> Mechanical <input type="checkbox"/> Paper path <input type="checkbox"/> Other (      )	<input type="checkbox"/> Part information <input type="checkbox"/> Electrical <input type="checkbox"/> Transmit/receive	<input type="checkbox"/> Action required <input type="checkbox"/> Service manual revision <input checked="" type="checkbox"/> Retrofit information

Firmware history for the Kir-C1.

### USA Model

B0395531	File No. (B039uxxx)	Version	C.SUM	Production
A	001	1.10	A7AE	1st Mass Prod.
B	002	1.14	DE6A	June Prod. '01'
C	-	-	-	No Production
D	003	1.23	12FC	August Prod. '01'
<b>E</b>	<b>004</b>	<b>1.30</b>	<b>05E6</b>	<b>October Prod. '01'</b>

### European Model

B0395532	File No. (B039exxx)	Version	C.SUM	Production
C	001	1.06	AF68	1st Mass Prod.
D	002	1.10	FDD1	May Prod. '01'
E	003	1.14	DE6A	June Prod. '01'
F	-	-	-	No Production
G	004	1.23	F03F	August Prod. '01'
<b>H</b>	<b>005</b>	<b>1.30</b>	<b>D244</b>	<b>October Prod. '01'</b>

### Asian/Taiwanese Model

B0395533	File No. (B039axxx)	Version	C.SUM	Production
A	001	1.10	2671	1st Mass Prod.
B	002	1.14	5827	June Prod. '01'
C	-	-	-	No Production
D	003	1.23	20D0	August Prod. '01'
E	004	1.24	F8DE	September Prod. '01'
<b>F</b>	<b>005</b>	<b>1.30</b>	<b>5EAE</b>	<b>October Prod. '01'</b>

### Chinese Model

B0395535	File No. (B039cxxx)	Version	C.SUM	Production
A	001	1.24	40B8	1st Mass Prod.
<b>B</b>	<b>002</b>	<b>1.30</b>	<b>468B</b>	<b>October Prod. '01'</b>

**Reissued: 03-Oct-01**

Model: Kir-C	Date: 15-May-01	No.: RB040001d
--------------	-----------------	----------------

Symptoms Corrected (new changes only)	USA	EU	Asia	China
<i>After SP2-995 (ID Sensor Detection Interval) is set to 256 or higher, the incorrect value is displayed.</i>	<i>E</i>	<i>H</i>	<i>F</i>	<i>B</i>
<i>The default value for SP2-101-001 (Erase Margin Adjustment - Leading edge) has been changed from 3.0 to 2.0.</i>	<i>E</i>	<i>H</i>	<i>F</i>	<i>B</i>
<i>The default value for SP2-101-002 (Erase Margin Adjustment - Leading edge) has been changed from 4.0 to 3.0.</i>	<i>E</i>	<i>H</i>	<i>F</i>	<i>B</i>

Reissued: 03-Oct-01

Model: Kir-C	Date: 06-Jun-01	No.: RB040006a
--------------	-----------------	----------------

## RTB Correction

The items in bold italics have been corrected or added.

Subject: ROM History (Kir-C1 Fax Option)		Prepared by: K. Miura	
From: Technical Services Dept., GTS Division			
Classification:	<input type="checkbox"/> Troubleshooting	<input type="checkbox"/> Part information	<input type="checkbox"/> Action required
	<input type="checkbox"/> Mechanical	<input type="checkbox"/> Electrical	<input type="checkbox"/> Service manual revision
	<input type="checkbox"/> Paper path	<input type="checkbox"/> Transmit/receive	<input checked="" type="checkbox"/> Retrofit information
	<input type="checkbox"/> Other (      )		

Firmware history for the Kir-C1 Fax Option.

NA

B4045582	<i>File No. (B404uxxx)</i>	Version	C.SUM	Production
B	<b>001</b>	01.12.00	7265	1st Mass Prod.
C	<b>002</b>	03.06.00	C968	June Prod. '01
<b>D</b>	<b>003</b>	<b>04.09.00</b>	<b>E2DF</b>	<b>August Prod. '01</b>
<b>E</b>	<b>004</b>	<b>05.01.00</b>	<b>6FFC</b>	<b>October Prod. 01'</b>

Europe

B4045584	<i>File No. (B404exxx)</i>	Version	C.SUM	Production
B	<b>001</b>	01.12.00	1ED3	1st Mass Prod.
C	<b>002</b>	01.14.00	F758	March Prod. '01
D	<b>003</b>	03.06.00	9923	June Prod. '01
<b>E</b>	<b>004</b>	<b>04.09.00</b>	<b>B141</b>	<b>August Prod. '01</b>
<b>F</b>	<b>005</b>	<b>05.01.00</b>	<b>E20E</b>	<b>October Prod. 01'</b>

Asia

B4045587	<i>File No. (B404axxx)</i>	Version	C.SUM	Production
	<b>001</b>	02.06.00	CC81	1st Mass Prod.
A	<b>002</b>	03.06.00	B99C	June Prod. '01
<b>B</b>	<b>003</b>	<b>04.08.00</b>	<b>6269</b>	<b>August Prod. '01</b>
<b>C</b>	<b>004</b>	<b>05.01.00</b>	<b>DF7B</b>	<b>October Prod. 01'</b>

**Reissued: 03-Oct-01**

Model: Kir-C	Date: 06-Jun-01	No.: RB040006a
--------------	-----------------	----------------

Symptom Corrected	USA	EU	Asia
<i>The image in the area 3cm from the leading edge is sometimes printed again near the middle of the page.</i>	<i>E</i>	<i>F</i>	<i>C</i>
<i>The wording for "Quick Dial Label" in the Czech display language has been corrected as follows: Incorrect: Štítek Blesk. Correct: Štítek Blesk .Vol.</i>	–	<i>F</i>	–
<i>The wording for "Select Sender with" in the Danish display language has been corrected as follows: Incorrect: Vælg modtager Bladre Correct: Vælg sender med</i>	–	<i>F</i>	–
<i>The wording for "Extension Outside" in the Dutch display language has been corrected as follows: Incorrect: Intern Buiten Correct: Intern Externe</i>	–	<i>F</i>	–
<i>The wording for "Select Sender with" in the Norwegian display language has been corrected as follows: Incorrect: Velg mottaker Se igjen. Correct: Velg mottaker med</i>	–	<i>F</i>	–
<i>With French set as the display language, the following line is displayed twice if an undefined character is entered for a Speed Dial search: Annu. Tel.: [A] &lt;&gt;/OK. (normally, a 'not found'-type error message should appear on the 2nd line).</i>	<i>D</i>	<i>E</i>	–
<i>In some cases, Substitute Reception files do not appear on the Power Failure Report.</i>	<i>D</i>	<i>E</i>	<i>B</i>
<i>In some cases, part of the image data along the main scan direction is missing when using A3→B4 reduction Tx.</i>	<i>D</i>	<i>E</i>	<i>B</i>
<i>List printing does not stop, even when the Clear/Stop key is pressed.</i>	<i>D</i>	<i>E</i>	<i>B</i>
<i>The center mark is missing when printing out Quick Dial Labels.</i>	<i>D</i>	<i>E</i>	<i>B</i>

Model: Kir-C		Date: 10-Oct-01	No.: RB040014
Subject: Original Jam		Prepared by: K. Miura	
From: Technical Services Dept., GTS Division			
Classification:	<input checked="" type="checkbox"/> Troubleshooting <input type="checkbox"/> Mechanical <input type="checkbox"/> Paper path <input type="checkbox"/> Other (      )	<input type="checkbox"/> Part information <input type="checkbox"/> Electrical <input type="checkbox"/> Transmit/receive	<input type="checkbox"/> Action required <input type="checkbox"/> Service manual revision <input type="checkbox"/> Retrofit information

### Symptom

When feeding custom size originals with the ADF (B387), the second original will jam when the actual length is from 118 mm to 172 mm.

**NOTE:** This does not occur with the B379 ARDF.

### Cause

The software did not take into account the following:

Since the distance from the trailing edge sensor to the feed roller is 172 mm, the software should only use the sensor output for originals with an actual length of 172 mm or greater (i.e. ones that the sensor can detect directly). However due to a programming error, the software relies on the sensor output for sizes from 148 mm (A5).

However in Custom Original mode, in order to allow for the space between originals, the original size is calculated as the specified size + 30mm. Therefore the total range of Custom Originals (actual sizes) that will cause a jam is from **118 → 172mm**. Since these originals are too short to reach the sensor, the sensor reports that there are none present.

### Countermeasure

As an individual countermeasure, please replace the B387 ADF ROM. This was applied from April '01 mass production.

### NOTE

The countermeasure ROM previously announced in RTB #RB040008 already includes the solution for this symptom.

Reissued: 22-Oct-01

Model: Kir-C	Date: 12-Jul-01	No.: RB040009b
--------------	-----------------	----------------

## RTB Correction

The items in bold italics have been corrected or added.

Subject: ROM History (Kir-C1 Printer Option)		Prepared by: M. Kitajima	
From: Technical Services Dept., GTS Division			
Classification:	<input type="checkbox"/> Troubleshooting <input type="checkbox"/> Mechanical <input type="checkbox"/> Paper path <input type="checkbox"/> Other (      )	<input checked="" type="checkbox"/> Part information <input type="checkbox"/> Electrical <input type="checkbox"/> Transmit/receive	<input type="checkbox"/> Action required <input type="checkbox"/> Service manual revision <input type="checkbox"/> Retrofit information

Firmware history for the Kir-C1 Printer Option.

### General

B4055280	Version	C.SUM	Production
A	1.00	5E8C	1st Mass Prod.
B	1.02	43B1	May Prod. '01
C	1.04	8997	July Prod. '01
B4055285	1.00	A6C9	October Prod. '01

### Chinese/Taiwanese

B4055286	Version	C.SUM	Production
No suffix	1.00	D370	1st Mass Prod.

Symptoms Corrected (new information only)	General	CHN/TWN
<ol style="list-style-type: none"> <li><b><i>Start of mass production for the duplex model.</i></b></li> <li><b><i>Rotate Collation mode is enabled under the following conditions:</i></b> <ol style="list-style-type: none"> <li><b><i>The optional memory is installed.</i></b></li> <li><b><i>Auto Tray Select is selected from the printer driver.</i></b></li> <li><b><i>The same size (A4, Letter, or B5) is loaded in the paper trays in the opposite orientation (LEF/SEF).</i></b></li> </ol> </li> <li><b><i>Tray Lock can now be used for multiple trays.</i></b></li> <li><b><i>Sub Paper Size mode (A4/LT overwrite) has been added to UP mode.</i></b></li> <li><b><i>The bypass tray now supports both LEF and SEF feed.</i></b></li> <li><b><i>Spelling errors in the Czech display language have been corrected (e.g. Configuration Page, Menu List, etc.).</i></b></li> </ol>	B4055285	—

Model: Kir-C1		Date: 22-Oct-01	No.: RB040015
Subject: Duplex Jamming (Duplex Model Only)		Prepared by: K. Miura	
From: Technical Services Dept., GTS Division			
Classification:	<input checked="" type="checkbox"/> Troubleshooting <input type="checkbox"/> Part information <input type="checkbox"/> Action required <input type="checkbox"/> Mechanical <input type="checkbox"/> Electrical <input type="checkbox"/> Service manual revision <input type="checkbox"/> Paper path <input type="checkbox"/> Transmit/receive <input type="checkbox"/> Retrofit information <input type="checkbox"/> Other (      )		

## SYMPTOM

Duplex jamming

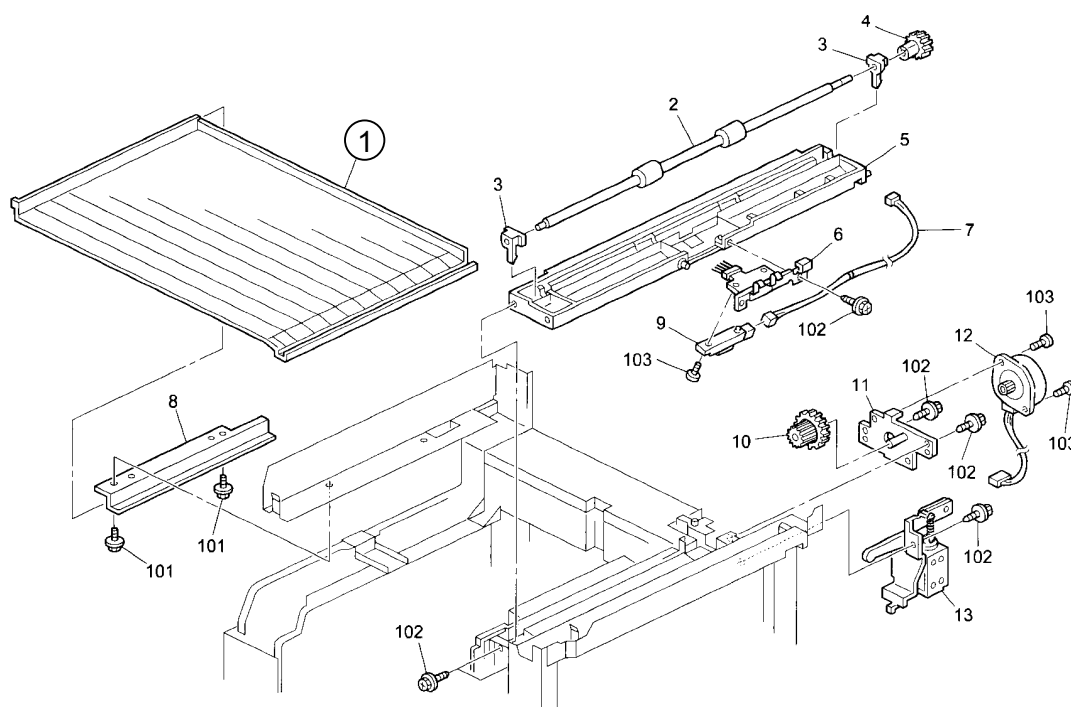
## CAUSE

The Reverser Shelf can sometimes come out of position during transport.

## SOLUTION

Check the Reverser Shelf position at installation.

As a permanent solution, the shape of the Reverser Shelf will be changed to ensure it stays properly in place during transport. We will issue an MB once the cut-in serial numbers have been confirmed.



Model: Kir-C		Date: 22-Oct-01	No.: RB040016
Subject: SC101		Prepared by: K. Miura	
From: Technical Services Dept., GTS Division			
Classification:	<input checked="" type="checkbox"/> Troubleshooting	<input type="checkbox"/> Part information	<input type="checkbox"/> Action required
	<input type="checkbox"/> Mechanical	<input type="checkbox"/> Electrical	<input type="checkbox"/> Service manual revision
	<input type="checkbox"/> Paper path	<input type="checkbox"/> Transmit/receive	<input type="checkbox"/> Retrofit information
	<input type="checkbox"/> Other (      )		

## SYMPTOM

SC101

## CAUSE

The machine is unable to perform Auto Shading.

When the main switch is turned on, the machine performs Auto Shading to read the white plate on the rear side of the left scale. If the exposure glass has been set flush against the right side, the left edge of the exposure glass can sometimes line up with the white plate.

## SOLUTION

As a temporary solution, if SC101 occurs, re-set the exposure glass flush against the left side.

As a permanent solution, the shape of the Right Scanner Cover will be changed so that it cannot be set flush against the right side. An MB will be issued after the cut-in serial numbers have been confirmed.



Model: Kir-C		Date: 26-Oct-01	No.: RB040017
Subject: ROM History (Kir-C1 Printer Option PS2)		Prepared by: M. Mano	
From: Technical Services Dept., GTS Division			
Classification:	<input type="checkbox"/> Troubleshooting <input type="checkbox"/> Mechanical <input type="checkbox"/> Paper path <input type="checkbox"/> Other (      )	<input type="checkbox"/> Part information <input type="checkbox"/> Electrical <input type="checkbox"/> Transmit/receive	<input type="checkbox"/> Action required <input type="checkbox"/> Service manual revision <input checked="" type="checkbox"/> Retrofit information

Firmware history for the Kir-C1 Printer Option PS2

B4315280	Version	C.SUM	Production
B	1.01	F384	1st Mass Prod.
C	1.02	AD6E	September Prod. '01
D	1.03	CAF9	October Prod. '01

Symptoms Corrected	Suffix
<b><i>The printer does not work when printing from the PS driver and Tray 1 has been set to a custom size in User Tools→ System Settings.</i></b>	D
<b><i>If the memory full condition occurs when printing from the PS driver with Rotate Collate, the image is printed out upside-down after the condition is cleared.</i></b>	D
<b><i>With PS 300dpi printing from a Mac application, the font comes out enlarged on the cover page.</i></b>	C
<b><i>Incorrect resolution values appear in the Get Info pull-down menu on Mac operating systems.</i></b>	C
<b><i>When printing from Dazel using the PS driver (SEF feed), a Load Tray error happens and the file cannot be printed out.</i></b>	C
<b><i>After printing out the PS Font List, a paper jam occurs while printing out the Configuration Page. Following this, the PS Font list cannot be printed out even after jam recovery.</i></b>	C

Model: Kir-C		Date: 31-Oct-01	No.: RB040018
Subject: ADF (DF72) Exit Roller Detaches		Prepared by: K. Miura	
From: Technical Services Dept., GTS Division			
Classification:	<input checked="" type="checkbox"/> Troubleshooting <input type="checkbox"/> Part information <input type="checkbox"/> Action required <input type="checkbox"/> Mechanical <input type="checkbox"/> Electrical <input type="checkbox"/> Service manual revision <input type="checkbox"/> Paper path <input type="checkbox"/> Transmit/receive <input type="checkbox"/> Retrofit information <input type="checkbox"/> Other (      )		

## SYMPTOM

ADF (DF72) Exit Roller detaches, which may cause image skewing or jams if the ADF is used in this condition.

## CAUSE

The Exit Roller Springs come off due to impact or excessive shock (e.g. during transport), which can sometimes cause the Bushing and Exit Roller to come off as well.

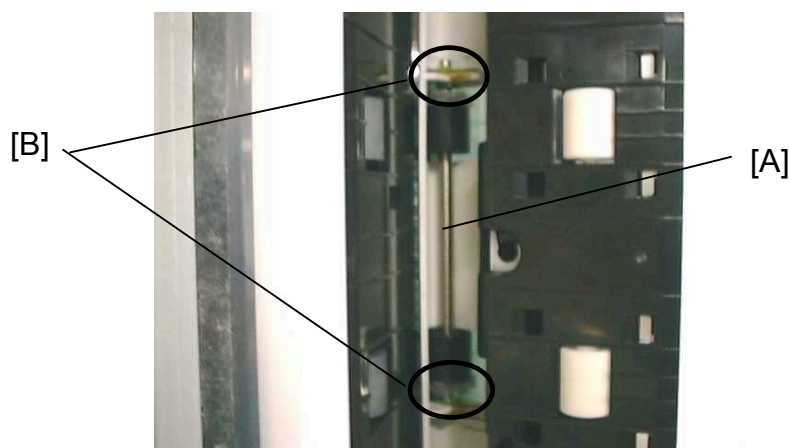
## SOLUTION

As a permanent solution, the shape of the bushing has been changed and a cardboard pad has been added to protect the Exit Roller from shock.

## Action in the field

If the Exit Roller comes off, please reset the roller as follows:

1. Feed an original to double check whether the Exit Roller has actually detached. If it has detached, the image will show skewing.
2. Turn off the main switch.
3. Open the ADF.
4. Pull open the Exit Guide. Visually confirm that the Exit Roller [A] has come off.  
If the bushing [B] has simply come out of position, push it back into place and go to Step 6. However if it has completely fallen off, continue onto Step 5.

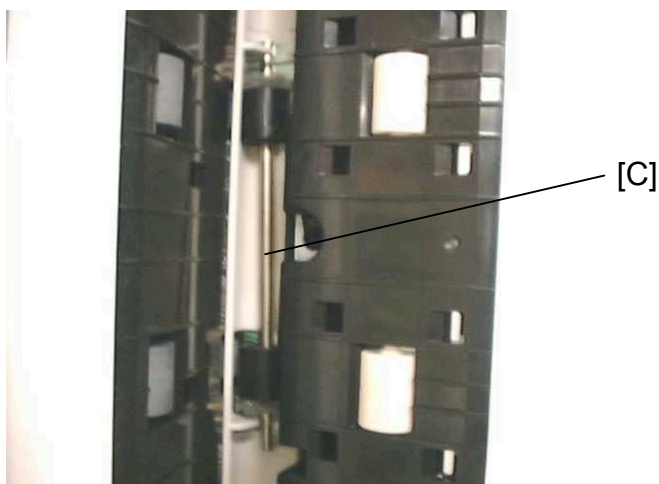


Model: Kir-C

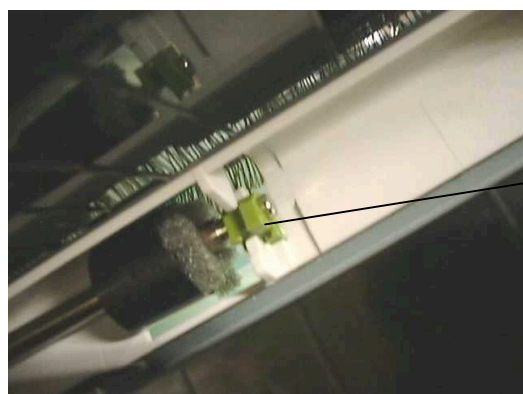
Date: 31-Oct-01

No.: RB040018

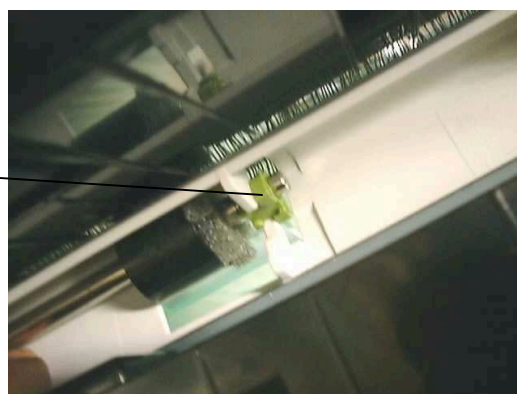
5. If **both** bushings have come off, set the Exit Roller [C] as shown in the photo below (either orientation is fine):



However if **only one** Bushing has come off, set the Bushing [D] as shown below:



- Before -



- After -

6. Set the Springs [E], starting with the upper spring, then the lower one.



7. Turn on the main switch and check the feed and copy quality.

Reissued: 04-Decv-01

Model: Kir-C	Date: 26-Oct-01	No.: RB040017a
--------------	-----------------	----------------

## RTB Correction

The items in bold italics have been corrected or added.

Subject: ROM History (Kir-C1 Printer Option PS2)		Prepared by: K. Ugaeri	
From: Technical Services Dept., GTS Division			
Classification:	<input type="checkbox"/> Troubleshooting	<input type="checkbox"/> Part information	<input type="checkbox"/> Action required
	<input type="checkbox"/> Mechanical	<input type="checkbox"/> Electrical	<input type="checkbox"/> Service manual revision
	<input type="checkbox"/> Paper path	<input type="checkbox"/> Transmit/receive	<input checked="" type="checkbox"/> Retrofit information
	<input type="checkbox"/> Other (       )		

Firmware history for the Kir-C1 Printer Option PS2.

B4315280	Version	C.SUM	Production
B	1.01	F384	1st Mass Prod.
C	1.02	AD6E	<b>No Production</b>
D	1.03	CAF9	<b>September Prod. '01</b>
<b>E</b>	<b>1.04</b>	<b>F31E</b>	<b>December Prod. '01</b>

Symptom Corrected	Suffix
<p><b><i>When PS2 firmware ver.1.02 or 1.03 is used on the old Kir-C1 controllers ver.1.00/1.02/1.04, "processing" is displayed on the LCD panel and PS printing is not possible.</i></b></p> <p><b><i>*For the old Kir-C1 controller ver.1.00, 1.02 or 1.04, use this PS2 version (=1.04 suffix E), or version 1.01 (suffix B).</i></b></p> <p><b>- PS2 Firmware Version -</b></p> <p><b>- Controller Firmware -</b>  Ver.1.01  Ver.1.03  Ver.1.04</p> <p><b>Old Kir-C1 Controller</b>  Ver.1.00, 1.02 or 1.04  OK  NG  OK</p> <p><b>New Kir-C1 Controller</b>  Ver.Vd.1.00  NG  OK  OK</p> <p><b>Stella series Controller</b>  NG  OK  OK</p>	<b>E</b>

Reissued: 04-Decv-01

Model: Kir-C	Date: 26-Oct-01	No.: RB040017a
The printer does not work when printing from the PS driver and Tray 1 has been set to a custom size with User Tools→ System Settings.	D	
If the memory full condition occurs when printing from the PS driver with Rotate Collate, the image is printed out upside-down after the condition is cleared.	D	
<b><i>The PS font list comes out reduced, and is printed out continuously until paper end.</i></b> <b><i>This symptom occurs with new Kir-C Controller firmware vd.1.00 (which incl. duplex function) and all Stella series controllers.</i></b>	C	
With PS 300dpi printing from a Mac application, the font comes out enlarged on the cover page.	C	
Incorrect resolution values appear in the Get Info pull-down menu on Mac operating systems.	C	
When printing from Dazel using the PS driver (SEF feed), a Load Tray error occurs and the file cannot be printed out.	C	
After printing out the PS Font List, a paper jam occurs while printing out the Configuration Page. Following this, the PS Font list cannot be printed out even after jam recovery.	C	

Model: Kir-C		Date: 17-Dec-01	No.: RB040019
Subject: Printer Controller Change for Duplex Model		Prepared by: K. Miura	
From: Technical Services Dept., GTS Division			
Classification:	<input type="checkbox"/> Troubleshooting <input type="checkbox"/> Part information <input type="checkbox"/> Action required <input type="checkbox"/> Mechanical <input type="checkbox"/> Electrical <input type="checkbox"/> Service manual revision <input type="checkbox"/> Paper path <input type="checkbox"/> Transmit/receive <input type="checkbox"/> Retrofit information <input checked="" type="checkbox"/> Other (      )		

From October 2001 production, printer controller product codes have corresponded to the duplex model of the K-C1. For this reason, the product codes have been changed as follows:

OLD	NEW
B405-10	B405-50
B405-14	B405-54
B405-15	B405-55
B405-17	B405-57
B405-22	B405-62
B405-24	B405-64
B405-26	B405-66
B405-27	B405-67

The new printer controllers have all the functions of the older ones. In addition, the marketing group has not sold the old controllers since the launch of the duplex model K-C1. From now on we will issue MBs only for the new printer controllers.

The differences between old and new are as follows:

Description	Old P/N	New P/N
Controller Board	B4055170	B4055175
Operation Manual	B4058607	B4058857

We will also issue an MB concerning the above information.

Model: Kir-C		Date: 17-Dec-01	No.: RB040020
Subject: Fusing Lamp Harness		Prepared by: K.Miura	
From: Technical Services Dept., GTS Division			
Classification:	<input type="checkbox"/> Troubleshooting <input type="checkbox"/> Mechanical <input type="checkbox"/> Paper path <input type="checkbox"/> Other (      )	<input type="checkbox"/> Part information <input type="checkbox"/> Electrical <input type="checkbox"/> Transmit/receive	<input checked="" type="checkbox"/> Action required <input type="checkbox"/> Service manual revision <input type="checkbox"/> Retrofit information

## SYMPTOM

If the rear holder [A] is removed, the fusing lamp harness is damaged by one of the gears in the gearbox.

## CAUSE

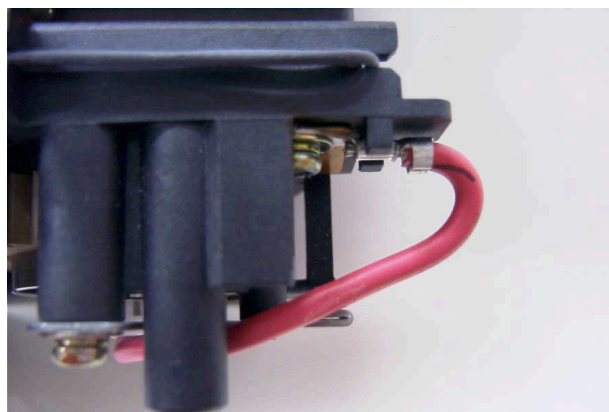
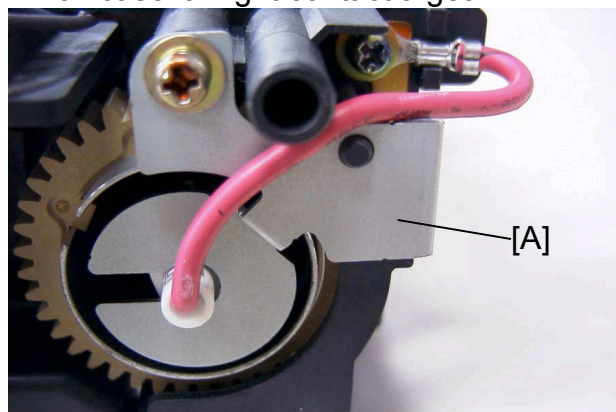
The problem occurs if the harness of the fusing lamp is not routed over the rear holder. The fusing lamp harness tends to drop and may contact one of the gears in the gearbox.

## SOLUTION

The rear holder has been modified.

- Before modification -

The harness lies on the rear holder. It is possible for it to drop in front of the rear holder, in which case it might contact a gear.



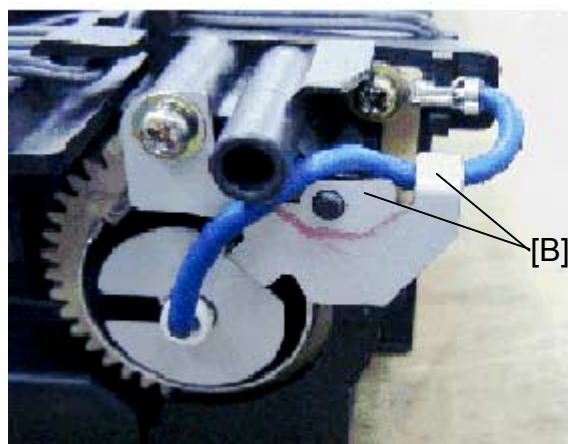
Model: Kir-C

Date: 17-Dec-01

No.: RB040020

- After modification -

The rear holder has been modified [B] to hold the harness in position. Route the harness over the rear holder as shown.



Please refer to MB #MB040003 for the cut-in serial numbers.



Model: Kir-C		Date: 26-Dec-01	No.: RB040021
Subject: PS2 Option		Prepared by: K. Ugaeri	
From: Technical Services Dept., GTS Division			
Classification:	<input checked="" type="checkbox"/> Troubleshooting <input type="checkbox"/> Mechanical <input type="checkbox"/> Paper path <input type="checkbox"/> Other (      )	<input type="checkbox"/> Part information <input type="checkbox"/> Electrical <input type="checkbox"/> Transmit/receive	<input checked="" type="checkbox"/> Action required <input type="checkbox"/> Service manual revision <input checked="" type="checkbox"/> Retrofit information

When the PS2 option is installed on the Kir-C1, the following problems occur with some combinations of the controller and PS2 firmware versions.

## Symptoms

### #1

When PS2 firmware ver.1.03 is used on the old Kir-C1 controllers ver.1.00/1.02/1.04, PS printing is not possible and “processing” is displayed on the LCD.

### #2

When PS2 firmware ver.1.01 is used on the new Kir-C1 controllers ver.vd.1.00 for the duplex function, the PS font list (user program function) does not print correctly. The PS font list is reduced and printed in the upper left quadrant of the paper, and printing continues until paper runs out.

		PS2 Firmware Version		
		Ver.1.01	Ver.1.03	Ver.1.04
<b>Controller Firmware Version</b>	Old Kir-C1 Controller Ver.1.00, 1.02, or 1.04	OK	NG#1	OK
	New Kir-C1 Controller Ver.Vd.1.00	NG#2	OK	OK

## Cause

PS2 firmware bug

## Countermeasure

PS2 firmware is improved with ver.1.04.

## Action required

For the old Kir-C1 controller ver.1.00/1.02/1.04, use PS2 version 1.04 (suffix E), or version 1.01 (suffix B).

For the new Kir-C1 controller ver. Vd.1.00, use PS2 version 1.03 (suffix D) or later.

Model: Kir-C		Date: 18-Jan-02	No.: RB040022
Subject: Paper Jamming for Defective Exit Sensor (220-240V machine only)		Prepared by: K.Miura	
From: Technical Services Dept., GTS Division			
Classification:	<input checked="" type="checkbox"/> Troubleshooting	<input type="checkbox"/> Part information	<input type="checkbox"/> Action required
	<input type="checkbox"/> Mechanical	<input type="checkbox"/> Electrical	<input type="checkbox"/> Service manual revision
	<input type="checkbox"/> Paper path	<input type="checkbox"/> Transmit/receive	<input type="checkbox"/> Retrofit information
	<input type="checkbox"/> Other (      )		

## SYMPTOM

When making copies and/or printing from the fax or printer units, paper jamming may occur at the exit sensor. After removing the paper, jamming occurs until turning the main switch off/on. Paper jamming occurs under the following conditions:

- After turning on the main switch
- When exiting the low power mode level 3 or night/off mode. (Under the low power mode level 3 or night/off mode, the fusing lamp is turned off.)

## CAUSE

When the fusing lamp is turned on, electrical noise is generated. If the defective exit sensor receives this noise, the sensor signal stays low until turning off/on the main switch. The occurrence ratio is about 2 - 3%. Under this condition, the machine always detects "No paper" at the exit section. Therefore when making copies or printing out from the fax or printer units, paper jamming occurs.

The defective sensor is installed within the specified lot. The total machine quantity in the lot is 6371. The defective sensor is installed in 8.2% of all machines (about 520 machines). The total number of machines with the defective sensor installed include the following serial numbers:

Code	Serial Number	Quantity
B039-22	H6617001621 - 1960	541
	H6617100755 - 0955	
B039-27	H6617003216 - 4278	1063
B039-29	H6617005887 - 6039	153
B039-69	H6617100001 - 0754	754
B040-22	H6717001230 - 1501	611
	H6717100391 - 0729	

Code	Serial Number	Quantity
B040-27	H6717002703 - 3752	1718
	H6717101534 - 2201	
B040-29	H6717004594 - 4775	182
B040-69	H6717100001 - 0390	390
B042-22	H6817100001 - 0585	585
B043-26	4J69110001 - 0150	150
B043-27	H6817100586 - 0809	224

Model: Kir-C

Date: 18-Jan-02

No.: RB040022

From the table on the previous page, machines with the following serial numbers have already been modified in Japan.

H6617004597, H6617004599, H6617004600, H6617004602, H6617004604,  
H6617004615, H6617004617, H6617004627, H6617004628, H6617004629,  
H6617004638, H6617004647, H6617004651, H6617004658, H6617004764,  
H6617004766, H6617005889, H6617005890, H6617005891, H6617005894,  
H6617005897, H6617005899, H6617005900, H6617005901, H6617005902,  
H6617005903, H6617005906, H6617005907, H6617005909, H6617005916,  
H6617005917, H6617005918, H6617005919, H6617005922, H6617005923,  
H6617005924, H6617005925, H6617005930, H6617005931, H6617005955,  
H6617005956, H6617005960, H6617005961, H6617005962, H6617005963,  
H6617005969, H6617005970, H6617005971, H6617005972, H6617005981,  
H6617005982, H6617005983, H6617005984, H6617005986, H6617005988,  
H6617006030, H6617006031, H6617006032, H6617006033

## **SOLUTION**

Replace the exit sensor. Please refer to Service Manual (page 3-29) for how to replace the exit sensor.

Reissued: 04-Feb-02

Model: Kir-C	Date: 15-May-01	No.: RB040001e
--------------	-----------------	----------------

## RTB Correction

The items in bold italics have been corrected or added.

Subject: ROM History (Kir-C1 Copy Version)		Prepared by: K.Miura	
From: Technical Services Dept., GTS Division			
Classification:	<input type="checkbox"/> Troubleshooting <input type="checkbox"/> Mechanical <input type="checkbox"/> Paper path <input type="checkbox"/> Other (      )	<input type="checkbox"/> Part information <input type="checkbox"/> Electrical <input type="checkbox"/> Transmit/receive	<input type="checkbox"/> Action required <input type="checkbox"/> Service manual revision <input checked="" type="checkbox"/> Retrofit information

Firmware history for the Kir-C1.

### USA Model

B0395531	File No. (B039uxxx)	Version	C.SUM	Production
A	001	1.10	A7AE	1st Mass Prod.
B	002	1.14	DE6A	June Prod. '01'
C	-	-	-	No Production
D	003	1.23	12FC	August Prod. '01'
E	004	1.30	05E6	October Prod. '01'

### European Model

B0395532	File No. (B039exxx)	Version	C.SUM	Production
C	001	1.06	AF68	1st Mass Prod.
D	002	1.10	FDD1	May Prod. '01'
E	003	1.14	DE6A	June Prod. '01'
F	-	-	-	No Production
G	004	1.23	F03F	August Prod. '01'
H	005	1.30	D244	October Prod. '01'

### Asian/Taiwanese Model

B0395533	File No. (B039axxx)	Version	C.SUM	Production
A	001	1.10	2671	1st Mass Prod.
B	002	1.14	5827	June Prod. '01'
C	-	-	-	No Production
D	003	1.23	20D0	August Prod. '01'
E	004	1.24	F8DE	September Prod. '01'
F	005	1.30	5EAE	October Prod. '01'

### Chinese Model

B0395535	File No. (B039cxxx)	Version	C.SUM	Production
A	001	1.24	40B8	1st Mass Prod.
B	002	1.30	468B	October Prod. '01'

**Reissued: 04-Feb-02**

Model: Kir-C	Date: 15-May-01	No.: RB040001e
--------------	-----------------	----------------

***Russian Model***

<b><i>B0395538</i></b>	<b><i>File No. (B039rxxx)</i></b>	<b><i>Version</i></b>	<b><i>C.SUM</i></b>	<b><i>Production</i></b>
	<b><i>001</i></b>	<b><i>1.31</i></b>	<b><i>1B36</i></b>	<b><i>1st Mass Prod.</i></b>

Symptom Corrected	USA	EU	Asia	China	Russia
<b><i>Start of Russian model production.</i></b>	–	–	–	–	

Model: Kir-C		Date: 19-Feb-02	No.: RB040023
Subject: CSI/TID, Line type programming (Kir-C1 Fax Option)		Prepared by: M.Mano	
From: Technical Services Dept., GTS Division			
Classification:	<input type="checkbox"/> Troubleshooting <input type="checkbox"/> Mechanical <input type="checkbox"/> Paper path <input type="checkbox"/> Other (      )	<input type="checkbox"/> Part information <input type="checkbox"/> Electrical <input type="checkbox"/> Transmit/receive	<input type="checkbox"/> Action required <input type="checkbox"/> Service manual revision <input checked="" type="checkbox"/> Retrofit information

## Symptom

When the functional country code (System Switch 0F) is changed to Hungary, the Czech Republic, or Poland, the CSI/TID and line type programming level change to incorrect values.

The following table shows the incorrect and correct values:

Country	Item	Incorrect	Correct	Note
Hungary	CSI/TID	User	<b>Service</b>	Sys SW 04 bit6
	Line type	User	<-	Sys SW 04 bit7
Czech	CSI/TID	User	<b>Service</b>	Sys SW 04 bit6
	Line type	Service	<b>User</b>	Sys SW 04 bit7
Poland	CSI/TID	User	<-	Sys SW 04 bit6
	Line type	Service	<b>User</b>	Sys SW 04 bit7

## Cause

Software bug

## Temporary Countermeasure

When changing the functional country code to Hungary, the Czech Republic, or Poland, please manually change the CSI/TID and line type programming level to the correct values shown above in bold.

## Permanent Countermeasure

A fax main firmware modification will be applied to the production line in the near future.

Reissued: 26-Feb-02

Model: Kir-C	Date: 15-May-01	No.: RB040001f
--------------	-----------------	----------------

## RTB Correction

The items in bold italics have been corrected or added.

Subject: ROM History (Kir-C1 Copy Version)		Prepared by: K.Miura	
From: Technical Services Dept., GTS Division			
Classification:	<input type="checkbox"/> Troubleshooting <input type="checkbox"/> Mechanical <input type="checkbox"/> Paper path <input type="checkbox"/> Other (      )	<input type="checkbox"/> Part information <input type="checkbox"/> Electrical <input type="checkbox"/> Transmit/receive	<input type="checkbox"/> Action required <input type="checkbox"/> Service manual revision <input checked="" type="checkbox"/> Retrofit information

Firmware history for the Kir-C1.

### USA Model

B0395531	File No. (B039uxxx)	Version	C.SUM	Production
A	001	1.10	A7AE	1st Mass Prod.
B	002	1.14	DE6A	June Prod. '01'
C	-	-	-	No Production
D	003	1.23	12FC	August Prod. '01'
E	004	1.30	05E6	October Prod. '01'
<b>F</b>	<b>005</b>	<b>1.32</b>	<b>7DA0</b>	<b>April Prod. '02'</b>

### European Model

B0395532	File No. (B039exxx)	Version	C.SUM	Production
C	001	1.06	AF68	1st Mass Prod.
D	002	1.10	FDD1	May Prod. '01'
E	003	1.14	DE6A	June Prod. '01'
F	-	-	-	No Production
G	004	1.23	F03F	August Prod. '01'
H	005	1.30	D244	October Prod. '01'
<b>J</b>	<b>006</b>	<b>1.32</b>	<b>3D2C</b>	<b>April Prod. '02'</b>

### Asian/Taiwanese Model

B0395533	File No. (B039axxx)	Version	C.SUM	Production
A	001	1.10	2671	1st Mass Prod.
B	002	1.14	5827	June Prod. '01'
C	-	-	-	No Production
D	003	1.23	20D0	August Prod. '01'
E	004	1.24	F8DE	September Prod. '01'
F	005	1.30	5EAE	October Prod. '01'
<b>G</b>	<b>006</b>	<b>1.32</b>	<b>EA3A</b>	<b>April Prod. '02'</b>

### Chinese Model

B0395535	File No. (B039cxxx)	Version	C.SUM	Production
A	001	1.24	40B8	1st Mass Prod.
B	002	1.30	468B	October Prod. '01'
<b>C</b>	<b>003</b>	<b>1.32</b>	<b>13AF</b>	<b>April Prod. '02'</b>

Reissued: 26-Feb-02

Model: Kir-C	Date: 15-May-01	No.: RB040001f
--------------	-----------------	----------------

Russian Model

B0395538	File No. (B039rxxx)	Version	C.SUM	Production
	001	1.31	1B36	1st Mass Prod.
<b>A</b>	<b>002</b>	<b>1.32</b>	<b>7BD0</b>	<b>April Prod. 02'</b>

Symptom Corrected	USA	EU	Asia	China	Russia
<i>The cooling fan sometimes does not stop when the machine enters Night/Off Mode from the Low Power Mode Level 1.</i>	<b>F</b>	<b>J</b>	<b>G</b>	<b>C</b>	<b>A</b>
<i>When the machine exits Low Power Mode, the Paper End LED may not turn on even when there is no paper remaining. This occurs when the customer has selected Printer as the preferential application.</i>	<b>F</b>	<b>J</b>	<b>G</b>	<b>C</b>	—



Reissued: 28-Feb-02

Model: Kir-C	Date: 06-Jun-01	No.: RB040006b
--------------	-----------------	----------------

## RTB Correction

The items in bold italics have been corrected or added.

Subject: ROM History (Kir-C1 Fax Option)		Prepared by: M. Mano	
From: Technical Services Dept., GTS Division			
Classification:	<input type="checkbox"/> Troubleshooting <input type="checkbox"/> Part information <input type="checkbox"/> Action required		
	<input type="checkbox"/> Mechanical <input type="checkbox"/> Electrical <input type="checkbox"/> Service manual revision		
	<input type="checkbox"/> Paper path <input type="checkbox"/> Transmit/receive <input checked="" type="checkbox"/> Retrofit information		
	<input type="checkbox"/> Other (      )		

Firmware history for the Kir-C1 Fax Option.

NA

B4045582	File No. (B404uxxx)	Version	C.SUM	Production
B	001	01.12.00	7265	1st Mass Prod.
C	002	03.06.00	C968	June Prod. '01
D	003	04.09.00	E2DF	August Prod. '01
E	004	05.01.00	6FFC	October Prod. '01'

Europe

B4045584	File No. (B404exxx)	Version	C.SUM	Production
B	001	01.12.00	1ED3	1st Mass Prod.
C	002	01.14.00	F758	March Prod. '01
D	003	03.06.00	9923	June Prod. '01
<b>E</b>	004	04.09.00	B141	August Prod. '01
F	005	05.01.00	E20E	October Prod. '01'

Asia

B4045587	File No. (B404axxx)	Version	C.SUM	Production
	001	02.06.00	CC81	1st Mass Prod.
A	002	03.06.00	B99C	June Prod. '01
<b>B</b>	003	04.08.00	6269	August Prod. '01
C	004	05.01.00	DF7B	October Prod. '01'

Russia

B4045590	<b>File No.</b> <b>(B404rxxx)</b>	Version	C.SUM	Production
	<b>000</b>	<b>06.03.00</b>	<b>D2A0</b>	<b>1st Mass Prod.</b>

Reissued: 28-Feb-02

Model: Kir-C	Date: 06-Jun-01	No.: RB040006b
--------------	-----------------	----------------

Symptom Corrected	USA	EU	Asia	Russia
<i>Firmware release for Russia.</i>	-	-	-	" "

Reissued: 12-Mar-02

Model: Kir-C	Date: 12-Jul-01	No.: RB040009c
--------------	-----------------	----------------

## RTB Correction

The items in bold italics have been corrected or added.

Subject: ROM History (Kir-C1 Printer Option)		Prepared by: M. Kitajima	
From: Technical Services Dept., GTS Division			
Classification:	<input type="checkbox"/> Troubleshooting	<input checked="" type="checkbox"/> Part information	<input type="checkbox"/> Action required
	<input type="checkbox"/> Mechanical	<input type="checkbox"/> Electrical	<input type="checkbox"/> Service manual revision
	<input type="checkbox"/> Paper path	<input type="checkbox"/> Transmit/receive	<input type="checkbox"/> Retrofit information
	<input type="checkbox"/> Other (      )		

Firmware history for the Kir-C1 Printer Option.

### General

B4055280	Version	C.SUM	Production
A	1.00	5E8C	1st Mass Prod.
B	1.02	43B1	May Prod. '01
C	1.04	8997	July Prod. '01
B4055285	1.00	A6C9	October Prod. '01
B4055285A	1.05	37C4	December Prod. '01

### Chinese/Taiwanese

B4055286	Version	C.SUM	Production
No suffix	1.00	D370	1st Mass Prod.

### Russian

<b><i>B4055287</i></b>	<b><i>Version</i></b>	<b><i>C.SUM</i></b>	<b><i>Production</i></b>
<b><i>No suffix</i></b>	<b><i>3.00</i></b>	<b><i>B97A</i></b>	<b><i>1st Mass Prod.</i></b>

**Reissued: 12-Mar-02**

Model: Kir-C	Date: 12-Jul-01	No.: RB040009c
--------------	-----------------	----------------

Symptom Corrected	General	CHN/TWN	<i>Russian</i>
PCL5e Font Download cannot be performed.	B4055280B	—	—
While the copier is in standby mode with the printer on-line, the printer is taken off-line after entering and then exiting Printer Settings using the User Tools Key.	B	—	—
After a decimal number is entered in [Font Pitch] from [Printer Features]-[Job Control]-[PCL Menu], the digits to the right of the decimal point may be displayed differently on the LCD.	C	—	—
When printing out w/a cover page from a Mac client, text characters appear larger if the resolution has been set to 300dpi in [Printer Features]-[Job Control]-[Print Quality].	C	—	—
When both frame border and Rotate are enabled, the frame border does not appear.	C	—	—
Start of mass production for China and Taiwan models.	—	B4055286	—
1. Start of mass production for duplex models. 2. Rotate Collation mode is enabled under the following conditions: a. The optional memory is installed. b. Auto Tray Select is selected from the printer driver. c. The same size (A4, Letter, or B5) is loaded in the paper trays in the opposite orientation (LEF/SEF). 3. Tray Lock can now be used for multiple trays. 4. Sub Paper Size mode (A4/LT overwrite) has been added to UP mode. 5. The bypass tray now supports both LEF and SEF feed. 6. Spelling errors in the Czech display language have been corrected (e.g. Configuration Page, Menu List, etc.).	B4055285	—	—
1. The face side is not printed completely when a no paper feed jam occurs in the duplex print mode. 2. The printer controller hangs up when a PS job is attempted without installing the PS option.	B4055285A	—	—
<b>Start of mass production for the Russia model.</b>	—	—	<b>B4055287</b>

Reissued: 27-Mar-02

Model: Kir-C	Date: 12-Jul-01	No.: RB040009d
--------------	-----------------	----------------

## RTB Correction

The items in bold italics have been corrected or added.

Subject: ROM History (Kir-C1 Printer Option)		Prepared by: M. Kitajima	
From: Technical Services Dept., GTS Division			
Classification:	<input type="checkbox"/> Troubleshooting	<input checked="" type="checkbox"/> Part information	<input type="checkbox"/> Action required
	<input type="checkbox"/> Mechanical	<input type="checkbox"/> Electrical	<input type="checkbox"/> Service manual revision
	<input type="checkbox"/> Paper path	<input type="checkbox"/> Transmit/receive	<input type="checkbox"/> Retrofit information
	<input type="checkbox"/> Other (      )		

Firmware history for the Kir-C1 Printer Option.

### General

B4055280	Version	C.SUM	Production
A	1.00	5E8C	1st Mass Prod.
B	1.02	43B1	May Prod. '01
C	1.04	8997	July Prod. '01
B4055285	1.00	A6C9	October Prod. '01
B4055285A	1.05	37C4	December Prod. '01
<b><i>B4055285B</i></b>	<b><i>1.20</i></b>	<b><i>59D3</i></b>	<b><i>April Prod. '02</i></b>

### Chinese/Taiwanese

B4055286	Version	C.SUM	Production
No suffix	1.00	D370	1st Mass Prod.

### Russian

B4055287	Version	C.SUM	Production
No suffix	3.00	B97A	1st Mass Prod.

Symptom Corrected	General	CHN/TWN	<i>Russian</i>
1. <b><i>Rotate collation is enabled when using Kir-C1b or Kir-C1c.</i></b>	<b><i>B4055285B</i></b>	—	—
2. <b><i>Corrects the print when using AS400.</i></b>			
3. <b><i>Supports the Euro symbol.</i></b>			

Reissued: 1-May-02

Model: Kir-C	Date: 26-Oct-01	No.: RB040017b
--------------	-----------------	----------------

## RTB Correction

The items in bold italics have been corrected or added.

Subject: ROM History (Kir-C1 Printer Option PS2)		Prepared by: K. Miura	
From: Technical Services sec. Service Planning Dept.			
Classification:	<input type="checkbox"/> Troubleshooting	<input type="checkbox"/> Part information	<input type="checkbox"/> Action required
	<input type="checkbox"/> Mechanical	<input type="checkbox"/> Electrical	<input type="checkbox"/> Service manual revision
	<input type="checkbox"/> Paper path	<input type="checkbox"/> Transmit/receive	<input checked="" type="checkbox"/> Retrofit information
	<input type="checkbox"/> Other (      )		

Firmware history for the Kir-C1 Printer Option PS2.

B4315280	Version	C.SUM	Production
B	1.01	F384	1st Mass Prod.
C	1.02	AD6E	No Production
D	1.03	CAF9	September Prod. '01
E	1.04	F31E	December Prod.'01
<b><i>F</i></b>	<b><i>1.50</i></b>	<b><i>E0E7</i></b>	<b><i>May Prod. '02</i></b>

Symptom Corrected	Suffix
<b><i>A PS error may be displayed when printing from Adobe InDesign Ver. 2.0.</i></b>	<b><i>F</i></b>

Model: Kir-C		Date: 7-May-02	No.: RB040024
Subject: Paper End Sensor broken		Prepared by: K. Miura	
From: Technical Services sec. Service Planning Dept.			
Classification:	<input checked="" type="checkbox"/> Troubleshooting <input type="checkbox"/> Part information <input type="checkbox"/> Action required <input type="checkbox"/> Mechanical <input type="checkbox"/> Electrical <input type="checkbox"/> Service manual revision <input type="checkbox"/> Paper path <input type="checkbox"/> Transmit/receive <input type="checkbox"/> Retrofit information <input type="checkbox"/> Other (      )		

## SYMPTOM

The paper end sensor is damaged when the paper tray is pushed in.

## CAUSE

Incorrect paper loading:

Before pushing the tray in, the customer does not click down the bottom plate, set the paper stack underneath the feed roller (flush against tray's right side), and/or secure the end fence flush against the stack. The unsecured paper can then hit the paper end sensor when the tray is pushed in.

## SOLUTION

For customers reporting damage to the sensor, please advise them to be sure and remember the following important points:

1. First, push down the bottom plate until it locks in place with a click.
2. Next, set the paper stack underneath the feed roller, flush against the right side of the tray.
3. Lastly, set the end fence in place flush against the left side of the paper stack.

In addition, a bracket will be added in front of the paper end sensor to protect it from such cases, and the decal inside the paper tray will be changed to further clarify the above 3 points.

Reissued: 14-May-02

Model: Kir-C	Date: 26-Oct-01	No.: RB040017c
--------------	-----------------	----------------

## RTB Correction

The items in bold italics have been corrected or added.

Subject: ROM History (Kir-C1 Printer Option PS2)		Prepared by: K. Miura	
From: Technical Services sec. Service Planning Dept.			
Classification:	<input type="checkbox"/> Troubleshooting <input type="checkbox"/> Mechanical <input type="checkbox"/> Paper path <input type="checkbox"/> Other (      )	<input type="checkbox"/> Part information <input type="checkbox"/> Electrical <input type="checkbox"/> Transmit/receive	<input type="checkbox"/> Action required <input type="checkbox"/> Service manual revision <input checked="" type="checkbox"/> Retrofit information

Firmware history for the Kir-C1 Printer Option PS2.

B4315280	Version	C.SUM	Production
B	1.01	F384	1st Mass Prod.
C	1.02	AD6E	No Production
D	1.03	CAF9	September Prod. '01
E	1.04	F31E	December Prod.'01
F	1.50	E0E7	May Prod. '02

Symptom Corrected	Suffix
<b><i>The printer option now supports Mac OS X ver 10.1 (Native) and newer.</i></b>	<b><i>F</i></b>



Reissued: 4-Jul-02

Model: Kir-C	Date: 06-Jun-01	No.: RB040006c
--------------	-----------------	----------------

## RTB Correction

The items in bold italics have been corrected or added.

Subject: ROM History (Kir-C1 Fax Option)		Prepared by: M. Mano	
From: Technical Services sec. Service Planning Dept.			
Classification:	<input type="checkbox"/> Troubleshooting <input type="checkbox"/> Part information <input type="checkbox"/> Action required		
	<input type="checkbox"/> Mechanical <input type="checkbox"/> Electrical <input type="checkbox"/> Service manual revision		
	<input type="checkbox"/> Paper path <input type="checkbox"/> Transmit/receive <input checked="" type="checkbox"/> Retrofit information		
	<input type="checkbox"/> Other (       )		

Firmware history for the Kir-C1 Fax Option.

NA

B4045582	File No. (B404uxxx)	Version	C.SUM	Production
B	001	01.12.00	7265	1st Mass Prod.
C	002	03.06.00	C968	June Prod. '01
D	003	04.09.00	E2DF	August Prod. '01
E	004	05.01.00	6FFC	October Prod. '01
<b><i>F</i></b>	<b><i>005</i></b>	<b><i>06.05.00</i></b>	<b><i>AAC1</i></b>	<b><i>March Prod. '02</i></b>

Europe

B4045584	File No. (B404exxx)	Version	C.SUM	Production
B	001	01.12.00	1ED3	1st Mass Prod.
C	002	01.14.00	F758	March Prod. '01
D	003	03.06.00	9923	June Prod. '01
E	004	04.09.00	B141	August Prod. '01
F	005	05.01.00	E20E	October Prod. '01'
<b><i>G</i></b>	<b><i>006</i></b>	<b><i>06.04.00</i></b>	<b><i>86FA</i></b>	<b><i>March Prod. '02</i></b>

Asia

B4045587	File No. (B404axxx)	Version	C.SUM	Production
	001	02.06.00	CC81	1st Mass Prod.
A	002	03.06.00	B99C	June Prod. '01
B	003	04.08.00	6269	August Prod. '01
C	004	05.01.00	DF7B	October Prod. '01'
<b><i>D</i></b>	<b><i>005</i></b>	<b><i>06.04.00</i></b>	<b><i>53CF</i></b>	<b><i>March Prod. '02</i></b>

Russia

B4045590	File No. (B404rxxx)	Version	C.SUM	Production
	000	06.03.00	D2A0	1st Mass Prod.

**Reissued: 4-Jul-02**

Model: Kir-C	Date: 06-Jun-01	No.: RB040006c
--------------	-----------------	----------------

Symptom Corrected	USA	EU	Asia	Russia
<i>If the machine receives an incoming MMR transmission following an interrupted non-ECM job, a blank page is sometimes printed out.</i>	<b>F</b>	<b>G</b>	<b>D</b>	-
<i>Program parameters added for the Korea version. Country code: 028 (0x1C).</i>	<b>F</b>	-	-	-
<i>Translation error for "Own Name" in Czech: Incorrect: Vlastní Číslo Correct: Vlastní Jméno</i>	-	<b>G</b>	-	-
<i>ADDRESS appears on the Journal where DATE and TIME are normally written.</i>	-	<b>G</b>	-	-
<i>Default settings for System SW04 bits 6, 7 have been changed for Hungary, Czechoslovakia, and Poland:</i> ♦ Hungary: bit 6 = 0 → 1 (bit 7 no change). ♦ Czechoslovakia: bit 6 = 0 → 1, bit 7 = 1 → 0. ♦ Poland: bit 7 = 1 → 0 (bit 6 no change).	-	<b>G</b>	-	-

Reissued: 4-Jul-02

Model: Kir-C	Date: 12-Jul-01	No.: RB040009e
--------------	-----------------	----------------

## RTB Correction

The items in bold italics have been corrected or added.

Subject: ROM History (Kir-C1 Printer Option)		Prepared by: M. Mano	
From: Technical Services sec. Service Planning Dept.			
Classification:	<input type="checkbox"/> Troubleshooting <input type="checkbox"/> Mechanical <input type="checkbox"/> Paper path <input type="checkbox"/> Other (      )	<input checked="" type="checkbox"/> Part information <input type="checkbox"/> Electrical <input type="checkbox"/> Transmit/receive	<input type="checkbox"/> Action required <input type="checkbox"/> Service manual revision <input type="checkbox"/> Retrofit information

Firmware history for the Kir-C1 Printer Option.

### General

B4055280	Version	C.SUM	Production
A	1.00	5E8C	1st Mass Prod.
B	1.02	43B1	May Prod. '01
C	1.04	8997	July Prod. '01
B4055285	1.00	A6C9	October Prod. '01
B4055285A	1.05	37C4	December Prod. '01
B4055285B	1.20	59D3	April Prod. '02

### Chinese/Taiwanese

B4055286	Version	C.SUM	Production
No suffix	1.00	D370	1st Mass Prod.
<b>A</b>	<b>1.10</b>	<b>F633</b>	<b>July Prod. '02</b>

### Russian

B4055287	Version	C.SUM	Production
No suffix	3.00	B97A	1st Mass Prod.

Symptom Corrected	General	CHN/TWN	Russian
<b><i>When printing out with PCL6, some characters in the Chinese font Fzshuti/yaoti appear rough (smudged).</i></b>	—	<b><i>B4055286A</i></b>	—

Reissued: 19-Jul-02

Model: Kir-C	Date: 12-Jul-01	No.: RB040009f
--------------	-----------------	----------------

## RTB Correction

The items in bold italics have been corrected or added.

Subject: ROM History (Kir-C1 Printer Option)		Prepared by: M. Mano	
From: Technical Services sec. Service Planning Dept.			
Classification:	<input type="checkbox"/> Troubleshooting	<input checked="" type="checkbox"/> Part information	<input type="checkbox"/> Action required
	<input type="checkbox"/> Mechanical	<input type="checkbox"/> Electrical	<input type="checkbox"/> Service manual revision
	<input type="checkbox"/> Paper path	<input type="checkbox"/> Transmit/receive	<input type="checkbox"/> Retrofit information
	<input type="checkbox"/> Other (      )		

Firmware history for the Kir-C1 Printer Option.

### General

B4055280	Version	C.SUM	Production
A	1.00	5E8C	1st Mass Prod.
B	1.02	43B1	May Prod. '01
C	1.04	8997	July Prod. '01
B4055285	1.00	A6C9	October Prod. '01
B4055285A	1.05	37C4	December Prod. '01
B4055285B	1.20	59D3	April Prod. '02
<b><i>B4055285C</i></b>	<b><i>1.30</i></b>	<b><i>A488</i></b>	<b><i>August Prod. '02</i></b>

### Chinese/Taiwanese

B4055286	Version	C.SUM	Production
No suffix	1.00	D370	1st Mass Prod.
A	1.10	F633	July Prod. '02

### Russian

B4055287	Version	C.SUM	Production
No suffix	3.00	B97A	1st Mass Prod.

Symptom Corrected	General	CHN/TWN	Russian
<b><i>Panel settings reset to the defaults when the main switch is turned Off/On.</i></b>	<b><i>B4055285C</i></b>	—	—

Reissued: 16-Jul-02

Model: Kir-C	Date: 26-Oct-01	No.: RB040017d
--------------	-----------------	----------------

## RTB Correction

The items in bold italics have been corrected or added.

Subject: ROM History (Kir-C1 Printer Option PS2)		Prepared by: M. Mano	
From: Technical Services sec. Service Planning Dept.			
Classification:	<input type="checkbox"/> Troubleshooting	<input type="checkbox"/> Part information	<input type="checkbox"/> Action required
	<input type="checkbox"/> Mechanical	<input type="checkbox"/> Electrical	<input type="checkbox"/> Service manual revision
	<input type="checkbox"/> Paper path	<input type="checkbox"/> Transmit/receive	<input checked="" type="checkbox"/> Retrofit information
	<input type="checkbox"/> Other (       )		

Firmware history for the Kir-C1 Printer Option PS2.

B4315280	Version	C.SUM	Production
B	1.01	F384	1st Mass Prod.
C	1.02	AD6E	No Production
D	1.03	CAF9	September Prod. '01
E	1.04	F31E	December Prod.'01
F	1.50	E0E7	May Prod. '02
<b><i>G</i></b>	<b><i>1.60</i></b>	<b><i>46AC</i></b>	<b><i>August Prod. '02</i></b>

Symptom Corrected	Suffix
<b><i>Display of the Euro currency symbol supported with PS drivers used in a UNIX environment.</i></b>	<b><i>G</i></b>

Reissued: 20-Sep-02

Model: Kir-C	Date: 15-May-01	No.: RB040001g
--------------	-----------------	----------------

## RTB Correction

The items in bold italics have been corrected or added.

Subject: ROM History (Kir-C1 Copy Version)		Prepared by: K.Miura	
From: Technical Services sec. Service Planning Dept.			
Classification:	<input type="checkbox"/> Troubleshooting <input type="checkbox"/> Mechanical <input type="checkbox"/> Paper path <input type="checkbox"/> Other (      )	<input type="checkbox"/> Part information <input type="checkbox"/> Electrical <input type="checkbox"/> Transmit/receive	<input type="checkbox"/> Action required <input type="checkbox"/> Service manual revision <input checked="" type="checkbox"/> Retrofit information

Firmware history for the Kir-C1

### USA Model

B0395531	File No. (B039uxxx)	Version	C.SUM	Production
A	001	1.10	A7AE	1st Mass Prod.
B	002	1.14	DE6A	June Prod. 01'
C	-	-	-	No Production
D	003	1.23	12FC	August Prod. 01'
E	004	1.30	05E6	October Prod. 01'
F	005	1.32	7DA0	April Prod. 02'
<b>G</b>	<b>006</b>	<b>1.33</b>	<b>792D</b>	<b>October Prod. 02'</b>

### European Model

B0395532	File No. (B039exxx)	Version	C.SUM	Production
C	001	1.06	AF68	1st Mass Prod.
D	002	1.10	FDD1	May Prod. 01'
E	003	1.14	DE6A	June Prod. 01'
F	-	-	-	No Production
G	004	1.23	F03F	August Prod. 01'
H	005	1.30	D244	October Prod. 01'
J	006	1.32	3D2C	April Prod. 02'
<b>K</b>	<b>007</b>	<b>1.33</b>	<b>E02B</b>	<b>October Prod. 02'</b>

### Asian/Taiwanese Model

B0395533	File No. (B039axxx)	Version	C.SUM	Production
A	001	1.10	2671	1st Mass Prod.
B	002	1.14	5827	June Prod. 01'
C	-	-	-	No Production
D	003	1.23	20D0	August Prod. 01'
E	004	1.24	F8DE	September Prod. 01'
F	005	1.30	5EAE	October Prod. 01'
G	006	1.32	EA3A	April Prod. 02'
<b>H</b>	<b>007</b>	<b>1.33</b>	<b>741D</b>	<b>October Prod. 02'</b>

Reissued: 20-Sep-02

Model: Kir-C	Date: 15-May-01	No.: RB040001g
--------------	-----------------	----------------

Chinese Model

B0395535	File No. (B039cxxx)	Version	C.SUM	Production
A	001	1.24	40B8	1st Mass Prod.
B	002	1.30	468B	October Prod. 01'
C	003	1.32	13AF	April Prod. 02'
<b>D</b>	<b>004</b>	<b>1.33</b>	<b>E7B2</b>	<b>October Prod. 02'</b>

Russian Model

B0395538	File No. (B039rxxx)	Version	C.SUM	Production
	001	1.31	1B36	1st Mass Prod.
A	002	1.32	7BD0	April Prod. 02'
<b>B</b>	<b>003</b>	<b>1.33</b>	<b>A041</b>	<b>October Prod. 02'</b>

Symptom Corrected	USA	EU	Asia	China	Russia
<ol style="list-style-type: none"> <li><b>SP2-995 Factory default was at 0 (correct = 90).</b></li> <li><b>When SP2-996 is changed (0→1 or vice-versa), SP2-995 takes on the same value.</b></li> <li><b>When a value is input into SP2-995, SP2-996 takes on the same value.</b></li> <li><b>The value in SP2-995 cannot be cleared through an NVRAM clear.</b></li> <li><b>Even after setting the value for SP2-995 (ID Sensor Detection Interval), the detection is not performed.</b></li> </ol> <p><b>Other:</b>  <b>The setting range for SP2-995 has been changed:</b>  <b>Previous: 0 to 999</b>  <b>New: 1 to 240</b></p>	<b>G</b>	<b>K</b>	<b>H</b>	<b>D</b>	<b>B</b>

Reissued: 3-Oct-02

Model: Kir-C	Date: 06-Jun-01	No.: RB040006d
--------------	-----------------	----------------

## RTB Correction

The items in bold italics have been corrected or added.

Subject: ROM History (Kir-C1 Fax Option)		Prepared by: M. Mano	
From: Technical Services sec. Service Planning Dept.			
Classification:	<input type="checkbox"/> Troubleshooting <input type="checkbox"/> Part information <input type="checkbox"/> Action required		
	<input type="checkbox"/> Mechanical <input type="checkbox"/> Electrical <input type="checkbox"/> Service manual revision		
	<input type="checkbox"/> Paper path <input type="checkbox"/> Transmit/receive <input checked="" type="checkbox"/> Retrofit information		
	<input type="checkbox"/> Other (       )		

Firmware history for the Kir-C1 Fax Option.

NA

B4045582	File No. (B404uxxx)	Version	C.SUM	Production
B	001	01.12.00	7265	1st Mass Prod.
C	002	03.06.00	C968	June Prod. '01
D	003	04.09.00	E2DF	August Prod. '01
E	004	05.01.00	6FFC	October Prod. '01
F	005	06.05.00	AAC1	March Prod. '02

Europe

B4045584	File No. (B404exxx)	Version	C.SUM	Production
B	001	01.12.00	1ED3	1st Mass Prod.
C	002	01.14.00	F758	March Prod. '01
D	003	03.06.00	9923	June Prod. '01
E	004	04.09.00	B141	August Prod. '01
F	005	05.01.00	E20E	October Prod. '01'
G	006	06.04.00	86FA	March Prod. '02

Asia

B4045587	File No. (B404axxx)	Version	C.SUM	Production
	001	02.06.00	CC81	1st Mass Prod.
A	002	03.06.00	B99C	June Prod. '01
B	003	04.08.00	6269	August Prod. '01
C	004	05.01.00	DF7B	October Prod. '01'
D	005	06.04.00	53CF	March Prod. '02
<b><i>E</i></b>	<b><i>006</i></b>	<b><i>07.02.00</i></b>	<b><i>814A</i></b>	<b><i>September Prod. '02</i></b>

Russian

B4045590	File No. (B404rxxx)	Version	C.SUM	Production
	000	06.03.00	D2A0	1st Mass Prod.



**Reissued: 3-Oct-02**

Model: Kir-C	Date: 06-Jun-01	No.: RB040006d
--------------	-----------------	----------------

Symptom Corrected	USA	EU	Asia	Russia
<b><i>Modifications for compliance with new revisions made to Taiwanese Fax communication standards.</i></b>	-	-	<b><i>E</i></b>	-

Reissued: 3-Dec-02

Model: Kir-C	Date: 15-May-01	No.: RB040001h
--------------	-----------------	----------------

## RTB Correction

The items in bold italics have been corrected or added.

Subject: ROM History (Kir-C1 Copy Version)		Prepared by: K.Miura	
From: Technical Services sec. Service Planning Dept.			
Classification:	<input type="checkbox"/> Troubleshooting <input type="checkbox"/> Part information <input type="checkbox"/> Action required		
	<input type="checkbox"/> Mechanical <input type="checkbox"/> Electrical <input type="checkbox"/> Service manual revision		
	<input type="checkbox"/> Paper path <input type="checkbox"/> Transmit/receive <input checked="" type="checkbox"/> Retrofit information		
	<input type="checkbox"/> Other (       )		

This is to inform you of the firmware history for the Kir-C1.

(USA Model)

B0395531	File No. (B039uxxx)	Version	C.SUM	Production
A	001	1.10	A7AE	1st Mass Prod.
B	002	1.14	DE6A	June Prod. 01'
C	-	-	-	No Production
D	003	1.23	12FC	August Prod. 01'
E	004	1.30	05E6	October Prod. 01'
F	005	1.32	7DA0	April Prod. 02'
G	006	1.33	792D	October Prod. 02'
<b><i>H</i></b>	<b><i>007</i></b>	<b><i>1.36</i></b>	<b><i>78FA</i></b>	<b><i>December Prod. 02'</i></b>

(European Model)

B0395532	File No. (B039exxx)	Version	C.SUM	Production
C	001	1.06	AF68	1st Mass Prod.
D	002	1.10	FDD1	May Prod. 01'
E	003	1.14	DE6A	June Prod. 01'
F	-	-	-	No Production
G	004	1.23	F03F	August Prod. 01'
H	005	1.30	D244	October Prod. 01'
J	006	1.32	3D2C	April Prod. 02'
K	007	1.33	E02B	October Prod. 02'
<b><i>L</i></b>	<b><i>008</i></b>	<b><i>1.36</i></b>	<b><i>EF92</i></b>	<b><i>December Prod. 02'</i></b>

(Asian/Taiwanese Model)

B0395533	File No. (B039axxx)	Version	C.SUM	Production
A	001	1.10	2671	1st Mass Prod.
B	002	1.14	5827	June Prod. 01'
C	-	-	-	No Production
D	003	1.23	20D0	August Prod. 01'
E	004	1.24	F8DE	September Prod. 01'
F	005	1.30	5EAE	October Prod. 01'
G	006	1.32	EA3A	April Prod. 02'
H	007	1.33	741D	October Prod. 02'
<b><i>J</i></b>	<b><i>008</i></b>	<b><i>1.36</i></b>	<b><i>28A8</i></b>	<b><i>December Prod. 02'</i></b>

**Reissued: 3-Dec-02**

Model: Kir-C	Date: 15-May-01	No.: RB040001h
--------------	-----------------	----------------

(Chinese Model)

B0395535	File No. (B039cxxx)	Version	C.SUM	Production
A	001	1.24	40B8	1st Mass Prod.
B	002	1.30	468B	October Prod. 01'
C	003	1.32	13AF	April Prod. 02'
D	004	1.33	E7B2	October Prod. 02'
<b>E</b>	<b>005</b>	<b>1.36</b>	<b>BE8D</b>	<b>December Prod. 02'</b>

(Russian Model)

B0395538	File No. (B039rxxx)	Version	C.SUM	Production
	001	1.31	1B36	1st Mass Prod.
A	002	1.32	7BD0	April Prod. 02'
B	003	1.33	A041	October Prod. 02'
<b>C</b>	<b>004</b>	<b>1.36</b>	<b>B506</b>	<b>December Prod. 02'</b>

Symptom Corrected	USA	EU	Asia	China	Russia
<b><i>SC194 sometimes disappears after a certain amount of time if the error occurs at power ON.</i></b>	<b>H</b>	<b>L</b>	<b>J</b>	<b>E</b>	<b>C</b>
1. SP2-995 Factory default was at 0 (correct = 90). 2. When SP2-996 is changed (0→1 or vice-versa), SP2-995 takes on the same value. 3. When a value is input into SP2-995, SP2-996 takes on the same value. 4. The value in SP2-995 cannot be cleared through an NVRAM clear. 5. Even after setting the value for SP2-995 (ID Sensor Detection Interval), the detection is not performed.  Other: The setting range for SP2-995 has been changed: Previous: 0 to 999 New: 1 to 240	G	K	H	D	B
The cooling fan sometimes does not stop when the machine enters Night/Off Mode from the Low Power Mode Level 1.	F	J	G	C	A
When the machine exits Low Power Mode, the Paper End LED may not turn on even when there is no paper remaining. This occurs when the customer has selected Printer as the preferential application.	F	J	G	C	—
Start of Russian model production.	—	—	—	—	—
After SP2-995 (ID Sensor Detection Interval) is set to 256 or higher, the incorrect value is displayed.	E	H	F	B	—
The default value for SP2-101-001 (Erase Margin Adjustment - Leading edge) has been changed from 3.0 to 2.0.	E	H	F	B	—
The default value for SP2-101-002 (Erase Margin Adjustment - Leading edge) has been changed from 4.0 to 3.0.	E	H	F	B	—
Start of Chinese and Taiwanese model production.	—	—	E	A	—

**Reissued: 3-Dec-02**

Model: Kir-C	Date: 15-May-01	No.: RB040001h
--------------	-----------------	----------------

Symptom Corrected	USA	EU	Asia	China	Russia
The message when trying to make a duplex copy by using 5 1/2"x8 1/2" paper size has been changed as follows: OLD: Cannot Duplex Copy / This Size Paper NEW: Cannot Duplex Copy / This Paper Size	D	G	D	—	—
The message when trying to sort by using long length original has been changed as follows: OLD: Cannot Sort This Size Paper NEW: Cannot Sort This Paper Size	D	G	D	—	—
The range of the value for SP1-105 has been changed as follows (Service Manual is correct): OLD: 160 ~ 230 °C NEW: 160 ~ 190 °C	D	G	D	—	—
When turning on/off main switch during the combine copy, SC 922 may appear.	D	G	D	—	—
After clearing an image rotation DF jam, the copy taken with the exposure glass contains an "Obi" image (a thick, belt-like banding pattern) along with highly reduced copies of the original. Settings: APS, 50% redctn., 3 originals (A3).	D	G	D	—	—
In the middle of a combine copy job (exposure glass), the "Set Next + Start ..." message is not re-displayed following the brief error message triggered by the user entering a copy quantity that exceeds the maximum limit.	D	G	D	—	—
The following message, which pops up inside User Tools when the # and Start Key are pressed, remains displayed even when the user exits by pressing the User Tools key: "Press Ok to return the copier settings to default. If not, press cancel."	D	G	D	—	—
SC123 sometimes occurs when fax transmission is initiated while the machine is receiving.	D	G	D	—	—
When SP4-942 (Black Line Erase) is set to "2", the image appears split into several horizontal lines.	B	E	B	—	—
Specification change: Firmware modified so that even when the machine is in the middle of a Key Counter copy job, incoming fax or printer jobs will be accepted.	B	E	B	—	—
The setting options for SP4-942 have been changed as follows: Old:           New: 0: none       0: none 1: weak 1: weak       2: normal 2: strong      3: strong	B	E	B	—	—
Therefore, the level of the old "1: weak" is the same as the new "2: normal".	B	E	B	—	—
Specification change: As a countermeasure for fuzzy image borders, the transfer current for Special Mode (envelopes) and for the 2nd side of Duplex prints has been changed.	B	E	B	—	—
When Special Mode (envelopes) is selected, the value for the paper slack set in SP1-003 (Paper Feed Timing) is increased by 5mm.	B	E	B	—	—

**Reissued: 3-Dec-02**

Model: Kir-C	Date: 15-May-01	No.: RB040001h
--------------	-----------------	----------------

Symptom Corrected	USA	EU	Asia	China	Russia
Black lines in halftone areas. Software modified so that no transfer current can be applied to the development roller surface after the main motor has stopped.	A	D	A	—	—
Change in detection conditions: To decrease (unnecessary) occurrences of SC392, the detection conditions have been changed as follows: 1) TD sensor 4V adjustment error must occur twice (check cycle is repeated). 2) Allowable interval (4V adjustment) changed from 80ms to 100ms.	A	D	A	—	—
If a tray (optional tray unit) is installed but not fully pushed in when the main power is turned on, there is no status display at all for that tray.	A	D	A	—	—
Specification change: If the Copy Reset Timer is set to "off", the Program User Code and Change User Code screens (Copy Features - Key Operator Tools) will not be cleared once the operator has started code input. Note: If enabled, the Energy Saver Timer and System Reset Timer will reset the screen (same as before).	A	D	A	—	—
Specification change: The key counter will not count up when the Printer Counter List is printed out.	A	D	A	—	—
When performed, SP7-808 (Reset Counters) would mistakenly clear the Copy, Fax, Printer, Duplex and A3/DLT counters. Note: This error did not affect (clear) the Total or Timer counters.	A	D	A	—	—
Despite key counter user restrictions, it is always possible to print out faxes. In addition, faxes are not recorded by the key counter (only by the total counter).	A	D	A	—	—
The Start Key does not turn green after the original scanning memory becomes full and the remaining originals are re-set for the next scanning (cannot continue). *Conditions: SP5-940 (Image Rotation) = 1 (disabled). Rotation Sort is selected An even # of sets is programmed	A	D	A	—	—
In Text mode, Background Removal does not completely remove the background surrounding light text characters (e.g. text written in pencil).	A	D	A	—	—

Reissued: 9-Jan-03

Model: Kir-C	Date: 26-Oct-01	No.: RB040017e
--------------	-----------------	----------------

## RTB Correction

The items in bold italics have been corrected or added.

Subject: ROM History (Kir-C1 Printer Option PS2)		Prepared by: M. Mano	
From: Technical Services Sec. Service Planning Dept.			
Classification:	<input type="checkbox"/> Troubleshooting <input type="checkbox"/> Part information <input type="checkbox"/> Action required		
	<input type="checkbox"/> Mechanical <input type="checkbox"/> Electrical <input type="checkbox"/> Service manual revision		
	<input type="checkbox"/> Paper path <input type="checkbox"/> Transmit/receive <input checked="" type="checkbox"/> Retrofit information		
	<input type="checkbox"/> Other (       )		

We hereby inform you of the firmware history for the Kir-C1 Printer Option PS2.

B4315280	Version	C.SUM	Production
B	1.01	F384	1st Mass Prod.
C	1.02	AD6E	No Production
D	1.03	CAF9	September Prod. '01
E	1.04	F31E	December Prod. '01
F	1.50	E0E7	May Prod. '02
G	1.60	46AC	August Prod. '02
<b><i>H</i></b>	<b><i>1.90</i></b>	<b><i>7614</i></b>	<b><i>January Prod. '03</i></b>

Symptom Corrected	Suffix																				
<b><i>Sometimes a PS file made in a UNIX environment cannot be printed.</i></b>	<b><i>H</i></b>																				
<b><i>The individual countermeasure for the BMW is applied to the mass production.</i></b>	<b><i>H</i></b>																				
Display of the Euro currency symbol supported with PS drivers used in a UNIX environment.	G																				
Printer option now supports Mac OS X ver 10.1 (Native) and newer.	F																				
PS error may be displayed when printing from Adobe InDesign Ver. 2.0.	F																				
When PS2 firmware ver.1.02 or 1.03 is used on the old Kir-C1 controllers ver.1.00/1.02/1.04, “processing” is displayed on the LCD panel and PS printing is not possible.  *For the old Kir-C1 controller ver.1.00, 1.02 or 1.04, use this PS2 version (=1.04 suffix E), or version 1.01 (suffix B).	E																				
<table><tr><td></td><td colspan="3">- PS2 Firmware Version -</td></tr><tr><td>- Controller Firmware -</td><td>Ver.1.01</td><td>Ver.1.03</td><td>Ver.1.04</td></tr><tr><td>Old Kir-C1 Controller Ver.1.00, 1.02 or 1.04</td><td>OK</td><td>NG</td><td>OK</td></tr><tr><td>New Kir-C1 Controller Ver.Vd.1.00</td><td>NG</td><td>OK</td><td>OK</td></tr><tr><td>Stella series Controller</td><td>NG</td><td>OK</td><td>OK</td></tr></table>		- PS2 Firmware Version -			- Controller Firmware -	Ver.1.01	Ver.1.03	Ver.1.04	Old Kir-C1 Controller Ver.1.00, 1.02 or 1.04	OK	NG	OK	New Kir-C1 Controller Ver.Vd.1.00	NG	OK	OK	Stella series Controller	NG	OK	OK	
	- PS2 Firmware Version -																				
- Controller Firmware -	Ver.1.01	Ver.1.03	Ver.1.04																		
Old Kir-C1 Controller Ver.1.00, 1.02 or 1.04	OK	NG	OK																		
New Kir-C1 Controller Ver.Vd.1.00	NG	OK	OK																		
Stella series Controller	NG	OK	OK																		
The printer does not work when printing from the PS driver and Tray 1 has been set as to a custom size in User Tools→ System Settings.	D																				
If the memory full condition occurs when printing from the PS driver with Rotate Collate, the image is printed out upside-down after the condition is cleared.	D																				

**Reissued: 9-Jan-03**

Model: Kir-C	Date: 26-Oct-01	No.: RB040017e
--------------	-----------------	----------------

Symptom Corrected	Suffix
The PS font list comes out reduced, and is printed out continuously until paper end. This symptom occurs with new Kir-C Controller firmware vd.1.00 (which incl. duplex function) and all Stella series controllers.	C
With PS 300dpi printing from a Mac application, the font comes out enlarged on the cover page.	C
Incorrect resolution values appear in the Get Info pull-down menu on Mac operating systems.	C
When printing from Dazel using the PS driver (SEF feed), a Load Tray error happens and the file cannot be printed out.	C
After printing out the PS Font List, a paper jam occurs while printing out the Configuration Page. Following this, the PS Font list cannot be printed out even after jam recovery.	C

Reissued: 19-Mar-03

Model: General RTB	Date: 4-Feb-03	No.: RGene013b
--------------------	----------------	----------------

## RTB Reissue

The items in ***bold italics*** have been corrected or updated.

Subject: Service remarks at installation		Prepared by: T. Itoh	
From: Technical Service Sec. Service Planning Dept.			
Classification:	<input type="checkbox"/> Troubleshooting	<input type="checkbox"/> Part information	<input type="checkbox"/> Action required
	<input type="checkbox"/> Mechanical	<input type="checkbox"/> Electrical	<input type="checkbox"/> Service manual revision
	<input type="checkbox"/> Paper path	<input type="checkbox"/> Transmit/receive	<input type="checkbox"/> Retrofit information
	<input checked="" type="checkbox"/> Other (Specification change)		

Please note the following change in counter specification. Although a production line modification will not be applied to some products, the action described in 4. *Important Notes for Installation* below must be taken for **all products** at installation.

## Overview:

Electronic counters will now be set to **0** when released from the factory, instead of being set to a negative value.

## Background:

Previously, counters were set to a negative value when shipped from the factory, and later set to "0" at installation, following installation test copies/prints. However this may cause confusion among some customers as to why the counter value at the commencement of the contract is "0", even though some installation test copies have already been made.

## Details:

### 1. Specification Change

	Specification
Current	<ul style="list-style-type: none"> <li>The initial value of the electrical counter is <b><u>negative</u></b> when products are shipped from the factory.</li> </ul> <p><b>Note:</b> After making test samples at installation, the negative counter value can be set to "0" with SP mode.</p>
New	<ul style="list-style-type: none"> <li>The initial value of the electrical counter is <b><u>"0"</u></b> when products are shipped from the factory.</li> </ul> <p><b>Note:</b> After making test samples at installation, the (positive) counter value cannot be set back to "0" with SP mode.</p>



**Reissued: 19-Mar-03**

Model: General RTB	Date: 4-Feb-03	No.: RGene013b
--------------------	----------------	----------------

## 2. Firmware Modification

Due to the counter modification, SP5-849 has also been changed as follows for products that have this SP mode (listed below).

	SP mode name:	Specification:
Current	Counter Clear Day	<ul style="list-style-type: none"> <li>When the electrical counter is changed <b><u>from a negative value to 0</u></b>, the machine recognizes this as the counter clear day and stores this date in the NVRAM.</li> </ul>
New	Installation Date	<ul style="list-style-type: none"> <li>When the electrical counter <b><u>reaches a value of 20</u></b>, the machine recognizes this as the installation date and stores this date in the NVRAM.</li> </ul>

**NOTE:** The following products have SP5-849. The new firmware for these products has not yet been released. However the release notes for each will clearly mention the new firmware version.

New products: Bellini-C2, Adonis C3  
Current products: Martini C1, Model-U C1

## 3. Schedule for the Counter Modification

The following is the current schedule for when the counter modification will be applied. Please note that there are some models to which the change will not be applied (marked as "---"), due to production schedules, production lot quantities and sales figures.

**NOTE:** The actual cut-in months that have been confirmed appear in the "Cut-in production month" column below. This RTB will be reissued when these dates have been confirmed for the remaining products.

### (1) New products

Product Name	Product Code	Target cut-in production month	Cut-in production month
Bellini C2	B070	2003.03	<b><i>April '03 production</i></b>
Adonis C3	B079/82	2003.03	First mass production lot
Model J-P2	G080	2003.03	<b><i>March '03 production</i></b>
Model J-P2 CF	G367	2003.03	<b><i>March '03 production</i></b>
Model AR- P1	G081/92	2003.03	<b><i>March '03 production</i></b>
Model K-C1a	B120	2003.03	<b><i>March '03 production</i></b>

**Reissued: 19-Mar-03**

Model: General RTB	Date: 4-Feb-03	No.: RGene013b
--------------------	----------------	----------------

**(2) Current products**

Product Name	Product Code	Target cut-in production month	Cut-in production month
Digital B&W Copiers			
Bellini C1	A294	---	---
Martini C1	B064/65	2003.03	April '03 production (see Note)
Model M-C2b	B098	2003.03	March '03 production
Adonis C2	B003/04/06/07	---	---
Russian C2	B022/27/31	2003.03	February '03 production
Model K-C1	B039/40/43	2003.03	March '03 production
Stella C1	B044/45/46/49	2003.03	March '03 production
Digital WF Copiers			
Dolphin	B010	2003.03	March '03 production
Analog Copiers			
All products	-	---	---
J2SS-C3	B047/48	(See Note)	March '03 production
Whale	A174		March '03 production
Color Copiers			
Model I2	B018	---	---
Model L2	B017	---	---
Model C2	B023	2003.02	February '03 production
Model U-C1	B051/52	2003.03	April '03 production
Color Printers			
Model J-P1	G060	---	---
Model J-P1 CF	G570	---	---
Model U-P1	G071	2003.03	March '03 production
Pomelo P3	G063	2003.03	March '03 production

**NOTE:** The counter change will be applied as a running change to production units only. For machines already shipped out or in the field, please be sure to take the action described below in Section 4.

**NOTE:** *For Martini-C1 mainframes assembled in Japan, the counter change will be applied from the first unit of April '03 production. For mainframes assembled at REI, the change will be applied midway through April production. These cut-in serial numbers will be announced as soon as they have been confirmed.*

**NOTE:** *The change will also be applied to analog models J2SS-C3 and Whale, as production will continue for a while. However, as these models use only mechanical counters, the initial value when shipped from the factory will be 1 or 2 (not 0), following the 1 or 2 factory test copies.*

Model: General RTB	Date: 4-Feb-03	No.: RGene013b
--------------------	----------------	----------------

#### 4. Important Notes for Machine Installation – All Products

Please be sure to perform the following at machine installation:

1. If the product is from before the counter modification, i.e. the counter is at a negative value, be sure to set the counter value to 0 **first**, then make the installation test samples.

Digital products	Set the electrical counter to 0 with SP mode.
Analog products	Set the mechanical counter to 0 with a reset key (tool).

2. If the product is modified, i.e. the counter is already at 0 (or above 0 following pre-installation at a service depot), simply make the installation test samples.
3. After completing the installation, make sure to **record the counter value**. This is very important, as this value will be used for billing with Meter Click contracts. Also, inform the customer of the value along with the reason why the counter does not start from "0".

Reissued: 13-Feb-03

Model: Kir-C	Date: 12-Jul-01	No.: RB040009g
--------------	-----------------	----------------

## RTB Correction

The items in bold italics have been corrected or added.

Subject: ROM History (Kir-C1 Printer Option)		Prepared by: M. Mano	
From: Technical Services Sec. Service Planning Dept.			
Classification:	<input type="checkbox"/> Troubleshooting <input type="checkbox"/> Mechanical <input type="checkbox"/> Paper path <input type="checkbox"/> Other (      )	<input checked="" type="checkbox"/> Part information <input type="checkbox"/> Electrical <input type="checkbox"/> Transmit/receive	<input type="checkbox"/> Action required <input type="checkbox"/> Service manual revision <input type="checkbox"/> Retrofit information

We hereby inform you of the firmware history for the Kir-C1 Printer Option.

(General)

B4055280	Version	C.SUM	Production
A	1.00	5E8C	1st Mass Prod.
B	1.02	43B1	May Prod. '01
C	1.04	8997	July Prod. '01
B4055285	1.00	A6C9	October Prod. '01
B4055285A	1.05	37C4	December Prod. '01
B4055285B	1.20	59D3	April Prod. '02
B4055285C	1.30	A488	August Prod. '02
<b><i>B4055285D</i></b>	<b><i>1.40</i></b>	<b><i>FE53</i></b>	<b><i>March Prod. '03</i></b>

(Chinese/Taiwanese)

B4055286	Version	C.SUM	Production
No suffix	1.00	D370	1st Mass Prod.
A	1.10	F633	July Prod. '02

(Russian)

B4055287	Version	C.SUM	Production
No suffix	3.00	B97A	1st Mass Prod.

**Reissued: 13-Feb-03**

Model: Kir-C	Date: 12-Jul-01	No.: RB040009g
--------------	-----------------	----------------

Symptom Corrected	General	CHN/TWN	Russian
PCL5e Font Download cannot be performed.	B4055280B	—	—
While the copier is in standby mode with the printer on-line, the printer is taken off-line after entering and then exiting Printer Settings using the User Tools Key.	B	—	—
After a decimal number is entered in [Font Pitch] from [Printer Features]-[Job Control]-[PCL Menu], the digits to the right of the decimal point may be displayed differently on the LCD.	C	—	—
When printing out w/a cover page from a Mac client, text characters appear larger if the resolution has been set to 300dpi in [Printer Features]-[Job Control]-[Print Quality].	C	—	—
When both the frame border and Rotate are enabled, the frame border does not appear.	C	—	—
Start of mass production for China and Taiwan models.	—	B4055286	—
<ol style="list-style-type: none"> <li>1. Start of mass production for duplex model.</li> <li>2. Rotate Collation mode is enabled under the following conditions: <ol style="list-style-type: none"> <li>a. The optional memory is installed.</li> <li>b. Auto Tray Select is selected from the printer driver.</li> <li>c. The same size (A4, Letter, or B5) is loaded in the paper trays in the opposite orientation (LEF/SEF).</li> </ol> </li> <li>3. Tray Lock can now be used for multiple trays.</li> <li>4. Sub Paper Size mode (A4/LT overwrite) has been added to UP mode.</li> <li>5. The bypass tray now supports both LEF and SEF feed.</li> <li>6. Spelling errors in the Czech display language have been corrected (e.g. Configuration Page, Menu List, etc.).</li> </ol>	B4055285	—	—
<ol style="list-style-type: none"> <li>1. The face side is not printed completely when no paper feed jam occurs in the duplex print mode.</li> <li>2. The printer controller hangs up when the PS job is operated without installing PS option.</li> </ol>	B4055285A	—	—
Start of mass production for Russia model.	—	—	B4055287
<ol style="list-style-type: none"> <li>1. Rotate collation is enabled when using Kir-C1b or Kir-C1c.</li> <li>2. Corrects the print when using AS400.</li> <li>3. Supports the Euro symbol.</li> </ol>	B4055285B	—	—
When printing out with a PCL6, some characters in the Chinese font Fzshuti/yaoti appear rough (smudged).	—	B4055286A	—
Panel settings reset to default when the main switch is turned Off/On.	B4055285C	—	—
<ol style="list-style-type: none"> <li>1. <b>Cannot print from the Sercom print server.</b></li> <li>2. <b>ListPrint doesn't count as "others" in the User Code column of User Management Tools (SmartNetMonitor for Admin).</b></li> <li>3. <b>"Processing..." is not displayed if ListPrint is performed in the User Tools while there are print jobs stacked in the Windows spooler.</b></li> <li>4. <b>A memory overflow may occur when deleting a print job from the Windows spooler.</b></li> </ol>	B4055285D	-	-

Model: Kir-C		Date: 18-Sep-02	No.: RB040025
Subject: ROM History (Kir-C1 Printer NIB Option)		Prepared by: M.Mano	
From: Technical Services sec. Service Planning Dept.			
Classification:	<input type="checkbox"/> Troubleshooting <input type="checkbox"/> Part information <input type="checkbox"/> Action required <input type="checkbox"/> Mechanical <input type="checkbox"/> Electrical <input type="checkbox"/> Service manual revision <input type="checkbox"/> Paper path <input type="checkbox"/> Transmit/receive <input checked="" type="checkbox"/> Retrofit information <input type="checkbox"/> Other (      )		

Firmware history for the Kir-C1 Printer NIB Option.

B4305000	Version	C.SUM	Production
-	6.19	B2AA	1st Mass Prod.
A	6.29c	A297	September Prod. '02

Symptom Corrected	Suffix
<b>IP Protocol can now be Enabled or Disabled in the Web browser.</b>	A
<p><b>You can change the SNMP Community Name and enable/disable SNMP port after updating firmware according to the following procedure.</b></p> <p>1) Type "<b>http://&lt;IP address&gt;/tcpipenables</b>" into URL Web browser or use MAP            2) Change or confirm the check box of each port or input community name            3) Click the "Accept Settings" button after inputting the password (default password is "sysadm")            4) Return to home and reset or recycle the power            5) Your settings will be reflected            See the next page "Appendix".</p> <p><b>NOTE: After setting HTTP disable, you cannot access the target device through a web browser or MAP. If you want to change the settings, please set "Restore Factory Defaults" by telnet. When the "telnet" port is set to disable, please change the jumper pin on the board to set "Factory Defaults".</b></p>	A
<p><b>Change in Specification:</b>            ※ <b>SNMP vulnerability:</b>  <b>SNMP security vulnerabilities reported by CERT on Feb.12, 2002 have been resolved and verified using the PROTOS c06-snmpv1 test suite.</b></p> <p>-CERT: <a href="http://www.cert.org/advisories/CA-2002-03.html">http://www.cert.org/advisories/CA-2002-03.html</a>            -PROTOS c06-snmpv1 test suite:  <a href="http://www.ee.oulu.fi/research/ouspg/protos/testing/c06/snmpv1/">http://www.ee.oulu.fi/research/ouspg/protos/testing/c06/snmpv1/</a></p>	A
<b>SAP interval time can now be adjusted.</b>	A
<b>Supports connection with NetWare6.</b>	A

Model: Kir-C

Date: 18-Sep-02

No.: RB040025

## Appendix

RICOH Aficio 1013/RICOH Network Printer D Model-TCP/IP Services Configuration Menu - Microsoft Internet Explorer

File Edit View Favorites Tools Help

Back Forward Stop Home Search Favorites History Print

Address http://133.139.166.227/tcpipenables Go Links

---

## RICOH Aficio 1013/RICOH Network Printer D Model

---

Unit Serial Number 980206

---

### TCP/IP Services Configuration Menu

---

**LPD Settings**  
 Enable LPD: ☒

**Enable TCP/IP Services**  
☒ HTTP ☒ IPP ☒ SNMP ☒ Telnet ☒ FTP ☒ Raw Sockets

SNMP Read/Write Community Name:

SNMP Read Community Name:

**A password is required to perform this function.**

Done Local intranet

Model: Kir-C		Date: 30-Apr-03	No.: RB040026
Subject: Differences between Kir-C1a and Kir-C1b		Prepared by: K. Miura	
From: 1st Tech. Support Sec. Service Support Dept.			
Classification:	<input type="checkbox"/> Troubleshooting <input type="checkbox"/> Mechanical <input type="checkbox"/> Paper path <input type="checkbox"/> Other (      )	<input type="checkbox"/> Part information <input type="checkbox"/> Electrical <input type="checkbox"/> Transmit/receive	<input type="checkbox"/> Action required <input checked="" type="checkbox"/> Service manual revision <input type="checkbox"/> Retrofit information

This bulletin is a summary of the differences between the existing Kir-C1b and the slightly modified version to be launched in May 2003, the Kir-C1a. The differences are laid out below in the layout style of the Service Manual.

**Note:**

1. Existing Kir-C1b (B039) codes: Ricoh Aficio 1015, Gestetner 1502, Nashuatec 1505, Rex-rotary 1508, Savin 2515, Lanier 5515, Infotec 4151MF).
2. For the Kir-C1a, there will be eight destination codes:
  - 10: Central/South America (Ricoh, Gestetner, and Lanier)
  - 19: Taiwan area (Ricoh and Gestetner)
  - 21: China area (Ricoh)
  - 22: Europe and Central/South America (Gestetner, Nashuatec, and Rex-rotary)
  - 24: Europe and Central/South America (Lanier)
  - 26: Europe (Infotec)
  - 27: Europe, Central/South America, and Near/Middle East (Ricoh)
  - 29: Asia and Pacific (Ricoh, Gestetner, and Lanier)

---

## 1. INSTALLATION

Same as the Kir-C1b, except that the Kir-C1a does not have an ARDF, Paper Tray Unit, Fax, or Printer option.

---

## 2. PREVENTIVE MAINTENANCE SCHEDULES

- There is no APS sensor.
- There is no ARDF or Paper Tray Unit.



Model: Kir-C

Date: 30-Apr-03

No.: RB040026

---

### **3. REPLACEMENT AND ADJUSTMENT**

There is no APS sensor.

---

### **4. TROUBLESHOOTING**

Same as Kir-C1b.

---

### **5. SERVICE TABLES**

#### **5.1 SP MODE TABLES**

SP4-301: APS Data Display

Only the platen cover status is operating (1st digit). All other digits show a value of 0.

SP4-303: APS Small Size Original

Only a value of 0 is possible (not detected), since there is no APS sensor.

SP5-907: Plug & Play Setting

The production names have been changed.

SP5-911: APS A4/LT Priority

Changing the setting has no effect.

SP5-914: Printer Counter Display

Only a value of 0 is possible (No).

SP5-944: APS Mode Setting

Only a value of 0 is possible (No).

SP7-211: Display - APS Working Time

The SP display is incorrect (but irrelevant because there is no APS sensor).

## 5.2 COPY FEATURES TABLE (USER TOOLS)

### System Setting Table

<b>2. System Settings</b>	1. Copy Count Display	
	2. Energy Saver Timer	
	3. Energy Saver Level	
	4. Auto Off Timer	
	5. AOF (Keep It On.)	
	6. Special Paper Size	
	7. Paper Tray Priority	
	8. Auto Tray Switch	
	9. Display Contrast	
	10. Key Operators Tools	
		1. Show/Print Counter
		2. Print Counter List
		3. Key Operator Access
		4. Program Key Operator Code
		5. Restricted Access

### Copy Features Table

<b>3. Copier Features</b>	1. Max. Copy Q'ty	
	2. Adjust Original Mode	
	3. Set Ratio	1. Text
		2. Photo
	4. Copy Reset Timer	
	5. SADF Auto Reset	
	6. Key Operator Tools	1. User Code Access
		2. Check Copy Counter
		3. Print Counter List
		4. Reset Counter
		5. Clear all User Codes
		6. Reset All Counters
		7. Program User Code
		8. Change User Code
		9. Delete User Code

## 6. DETAILED SECTION DESCRIPTIONS

- There is no APS sensor.
- There is no ARDF or Paper Tray Unit.
- There is no Fax or Printer option.

## 7. SPECIFICATIONS

		K-C1a	K-C1b
Copy speed		<b>13cpm</b>	15cpm
Memory capacity	std	<b>0MB</b>	NA: 16MB EU: 0MB
	option	<b>16MB, 32MB</b>	16MB, 32MB
Paper Capacity	std	<b>250 sheet x 1 + 100 sheet bypass</b>	250 sheet x 1 + 100 sheet bypass
	max	<b>350 sheets</b>	1350 sheets
Max CV		<b>10K outputs/month</b>	10K outputs/month
Duty		<b>30K outputs/month</b>	30K outputs/month
APS/AMS		<b>No</b>	Yes
Scan once copy many		<b>Yes with 16MB memory</b>	Yes with 16MB memory
Electronic sort		<b>Yes with 16MB memory</b>	Yes with 16MB memory
Image Rotation		<b>No</b>	Yes with 16MB memory
Series Copy		<b>No</b>	Yes with 16MB memory
Combine Copy		<b>No</b>	Yes with 16MB memory
<b>Option</b>	Platen Cover	<b>Yes</b>	Yes
	ADF	<b>Yes</b>	Yes
	Paper Bank	<b>No</b>	Yes
	Copier memory	<b>Yes</b>	Yes
	Fax option	<b>No</b>	Yes
	Printer option	<b>No</b>	Yes

Reissued: 2-Jul-03

Model: Kir-C	Date: 18-Sep-02	No.: RB040025a
--------------	-----------------	----------------

## RTB Correction

The items in bold italics have been corrected or added.

Subject: ROM History (Kir-C1 Printer NIB Option)		Prepared by: M.Mano	
From: 1st Tech. Support Sec. Service Support Dept.			
Classification:	<input type="checkbox"/> Troubleshooting	<input type="checkbox"/> Part information	<input type="checkbox"/> Action required
	<input type="checkbox"/> Mechanical	<input type="checkbox"/> Electrical	<input type="checkbox"/> Service manual revision
	<input type="checkbox"/> Paper path	<input type="checkbox"/> Transmit/receive	<input checked="" type="checkbox"/> Retrofit information
	<input type="checkbox"/> Other (       )		

We hereby inform you of firmware history for the Kir-C1 Printer NIB Option.

B4305000	Version	C.SUM	Production
-	6.19	B2AA	1st Mass Prod.
A	6.29c	A297	September Prod. '02
<b><i>B</i></b>	<b><i>6.31as</i></b>	<b><i>8EAC</i></b>	<b><i>June Prod. '03</i></b>

Symptom Corrected	Suffix
<b><i>Modified so that the SNMP read community name can be changed in Batch Configuration (Web SmartNetMonitor).</i></b>	<b><i>B</i></b>
<b><i>Removed IP address acquisition method ARP+PING.</i></b>	<b><i>B</i></b>

**Reissued: 2-Jul-03**

Model: Kir-C	Date: 18-Sep-02	No.: RB040025a
--------------	-----------------	----------------

Symptom Corrected	Suffix
IP Protocol can now Enabled or Disabled in the Web browser.	A
<p>You can change the SNMP Community Name and enable/disable SNMP port after updating firmware according to the following procedure.</p> <p>1) Type "http://&lt;IP address&gt;/tcpipenables" into URL Web browser or use MAP  2) Change or confirm the check box of each port or input community name  3) Click "Accept Settings" button after inputting password (default password is "sysadm")  4) Return to home and reset or recycle the power  5) Your settings will be reflected  See next page "Appendix".</p> <p>NOTE: After setting HTTP disable, you cannot access the target device through web browser or MAP. If your want to change the settings, please set "Restore Factory Defaults" by telnet. When "telnet" port is set to disable, please change the jumper pin on board to set "Factory Defaults".</p>	A
<p>Change in Specification:</p> <p>※ SNMP vulnerability:  SNMP security vulnerabilities reported by CERT on Feb.12, 2002 have been resolved and verified using the PROTONS c06-snmpv1 test suite.</p> <p>-CERT: <a href="http://www.cert.org/advisories/CA-2002-03.html">http://www.cert.org/advisories/CA-2002-03.html</a>  -PROTONS c06-snmpv1 test suite:  <a href="http://www.ee.oulu.fi/research/ouspg/protos/testing/c06/snmpv1/">http://www.ee.oulu.fi/research/ouspg/protos/testing/c06/snmpv1/</a></p>	A
SAP interval time can now be adjusted.	A
Supports connection with NetWare6.	A

Reissued: 2-Jul-03

Model: Kir-C	Date: 18-Sep-02	No.: RB040025a
--------------	-----------------	----------------

## Appendix

**RICOH Aficio 1013/1017 Network Printer D Model**

Unit Serial Number 980206

**TCP/IP Services Configuration Menu**

**LPD Settings**  
Enable LPD: ☒

**Enable TCP/IP Services**  
☒ HTTP   ☒ IPP   ☒ SNMP   ☒ Telnet   ☒ FTP   ☒ Raw Sockets

SNMP Read/Write Community Name:

SNMP Read Community Name:

**A password is required to perform this function.**

Model: Kir-C		Date: 6-Aug-03	No.: RB040027
Subject: Drum cleaning, SC302		Prepared by: M.Ishihara	
From: 1st Tech. Support Sec. Service Support Dept.			
Classification:	<input checked="" type="checkbox"/> Troubleshooting	<input type="checkbox"/> Part information	<input type="checkbox"/> Action required
	<input type="checkbox"/> Mechanical	<input type="checkbox"/> Electrical	<input type="checkbox"/> Service manual revision
	<input type="checkbox"/> Paper path	<input type="checkbox"/> Transmit/receive	<input type="checkbox"/> Retrofit information
	<input type="checkbox"/> Other (       )		

## SYMPTOM

Drum cleaning malfunction, sometimes triggering SC302.

## CAUSE

The two cleaning blade fixing screws loosen, or one of the screws (A below) comes loose and falls out.

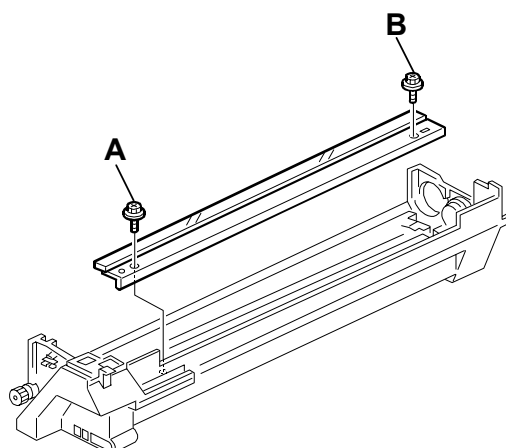
## SOLUTION

### Production line

The tightening torque for the screw has been increased from May 2003 production.

### In the field

Tighten both screws (A and B below, visible through the PCU slot before disassembly), and turn the main power Off/On to clear the SC.



Reissued: 20-Jan-05

Model: Kir-C	Date: 12-Jul-01	No.: RB040009i
--------------	-----------------	----------------

## RTB Correction

The "SC692" symptom was deleted from the description for v1.43.

Subject: ROM History (Kir-C1 Printer Option)		Prepared by: M. Ishihara	
From: 1st Tech. Support Sec. Service Support Dept.			
Classification:	<input type="checkbox"/> Troubleshooting <input type="checkbox"/> Mechanical <input type="checkbox"/> Paper path <input type="checkbox"/> Other (      )	<input checked="" type="checkbox"/> Part information <input type="checkbox"/> Electrical <input type="checkbox"/> Transmit/receive	<input type="checkbox"/> Action required <input type="checkbox"/> Service manual revision <input type="checkbox"/> Retrofit information

We hereby inform you of the firmware history for the Kir-C1 Printer Option.

(General)

B4055280	Version	C.SUM	Production
A	1.00	5E8C	1st Mass Prod.
B	1.02	43B1	May Prod. '01
C	1.04	8997	July Prod. '01
B4055285	1.00	A6C9	October Prod. '01
B4055285A	1.05	37C4	December Prod. '01
B4055285B	1.20	59D3	April Prod. '02
B4055285C	1.30	A488	August Prod. '02
B4055285D	1.40	FE53	March Prod. '03
<b>B4055285D</b>	<b>1.43</b>	<b>4E3A</b>	<b>For service use only</b>

(Chinese/Taiwanese)

B4055286	Version	C.SUM	Production
No suffix	1.00	D370	1st Mass Prod.
A	1.10	F633	July Prod. '02

(Russian)

B4055287	Version	C.SUM	Production
No suffix	3.00	B97A	1st Mass Prod.



**Reissued: 20-Jan-05**

Model: Kir-C	Date: 12-Jul-01	No.: RB040009i
--------------	-----------------	----------------

Symptom Corrected	General	CHN/TWN	Russian
PCL5e Font Download cannot be performed.	B4055280B	—	—
While the copier is in standby mode with the printer on-line, the printer is taken off-line after entering and then exiting Printer Settings using the User Tools Key.	B	—	—
After a decimal number is entered in [Font Pitch] from [Printer Features]-[Job Control]-[PCL Menu], the digits to the right of the decimal point may be displayed differently on the LCD.	C	—	—
When printing out w/a cover page from a Mac client, text characters appear larger if the resolution has been set to 300dpi in [Printer Features]-[Job Control]-[Print Quality].	C	—	—
When both the frame border and Rotate are enabled, the frame border does not appear.	C	—	—
Start of mass production for China and Taiwan models.	—	B4055286	—
<ol style="list-style-type: none"> <li>1. Start of mass production for duplex model.</li> <li>2. Rotate Collation mode is enabled under the following conditions: <ol style="list-style-type: none"> <li>a. The optional memory is installed.</li> <li>b. Auto Tray Select is selected from the printer driver.</li> <li>c. The same size (A4, Letter, or B5) is loaded in the paper trays in the opposite orientation (LEF/SEF).</li> </ol> </li> <li>3. Tray Lock can now be used for multiple trays.</li> <li>4. Sub Paper Size mode (A4/LT overwrite) has been added to UP mode.</li> <li>5. The bypass tray now supports both LEF and SEF feed.</li> <li>6. Spelling errors in the Czech display language have been corrected (e.g. Configuration Page, Menu List, etc.).</li> </ol>	B4055285	—	—
<ol style="list-style-type: none"> <li>1. The face side is not printed completely when no paper feed jam occurs in the duplex print mode.</li> <li>2. The printer controller hangs up when the PS job is operated without installing PS option.</li> </ol>	B4055285A	—	—
Start of mass production for Russia model.	—	—	B4055287
<ol style="list-style-type: none"> <li>1. Rotate collation is enabled when using Kir-C1b or Kir-C1c.</li> <li>2. Corrects the print when using AS400.</li> <li>3. Supports the Euro symbol.</li> </ol>	B4055285B	—	—
When printing out with a PCL6, some characters in the Chinese font Fzshuti/yaoti appear rough (smudged).	—	B4055286A	—
Panel settings reset to default when the main switch is turned Off/On.	B4055285C	—	—
<ol style="list-style-type: none"> <li>1. Cannot print from the Sercom print server.</li> <li>2. ListPrint doesn't count as "others" in the User Code column of User Management Tools (SmartNetMonitor for Admin).</li> <li>3. "Processing..." is not displayed if ListPrint is performed in User Tools while there are print jobs stacked in the Windows spooler.</li> <li>4. A memory overflow may occur when deleting a print job from the Windows spooler.</li> </ol>	B4055285D	-	-

Reissued: 20-Jan-05

Model: Kir-C	Date: 12-Jul-01	No.: RB040009i	
Symptom Corrected	General	CHN/TWN	Russian
<i>Some PCL text is not printed out correctly on the second page.</i>	<b>B4055285D</b> (Ver1.43)	-	-

Model: Kir-C (Paper Bank)		Date: 1-Jun-04	No.: RB040028
Subject: Non-paper feed jam (Bad friction pad)		Prepared by: M. Ishihara	
From: 1st Tech. Support Sec. Service Support Dept.			
Classification:	<input checked="" type="checkbox"/> Troubleshooting	<input type="checkbox"/> Part information	<input type="checkbox"/> Action required
	<input type="checkbox"/> Mechanical	<input type="checkbox"/> Electrical	<input type="checkbox"/> Service manual revision
	<input type="checkbox"/> Paper path	<input type="checkbox"/> Transmit/receive	<input type="checkbox"/> Retrofit information
	<input type="checkbox"/> Other (      )		

**Note:** This RTB applies only to the Kir-C Paper Bank and not to the Kir-C mainframe, since the mainframe uses a different friction pad.

## SYMPTOM

A non-feed jam occurs when the paper tray is almost full.

**Note:** This occurrence rate is higher when the paper is fed SEF (short-edge feed).

## CAUSE

A defect in one of the molds that the manufacturer uses to produce the friction pad left a burr on the pad surface, catching the paper and preventing it from being fed.

**Note:** Only one of the two molds used to form the friction pad was defective (Cav 2).

## SOLUTION

Please perform the following.

### 1. Check if the cause of the misfeed is actually the friction pad

(1) Check the paper bank serial number (production date)

The friction pad manufacturer has reported that the defective pads are all from 2004 production. A list of the affected serial numbers appears at the bottom of this RTB.

(2) Check the occurrence timing

Non-feed jams caused by the burred friction pad will occur when the paper tray is nearly full.

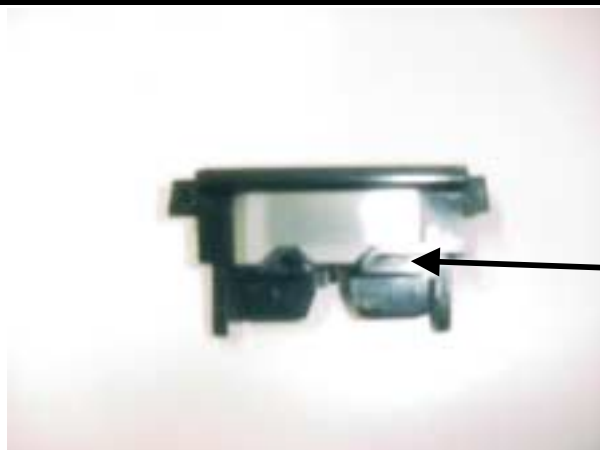
(3) Check the Cav. number of the friction pad

As mentioned above, all defective friction pads were made from Cav 2.

Model: Kir-C (Paper Bank)

Date: 1-Jun-04

No.: RB040028



Cav number (1 or 2) is visible here.

Cav 1: Normal

**Cav 2: May be defective**

**2. If it is suspected that the non-feed is caused by a defective friction pad, please try the following:**

- (1) Replace the friction pad.

**Please use sandpaper to remove the burr for urgent cases in which the replacement part cannot be procured in time.**

- (2) Remove the burr with grade 800 to 1000 sandpaper

- Smoothing the friction pad surface with grade 800-1000 sandpaper:

Rub the friction pad along a 50mm length of the surface of the sandpaper as shown below, two or three times **in one direction only** (do not move the pad back and forth). This is essential to ensure that the paper is fed smoothly.

A2672831 or  
A8602831

Move the friction pad in **one direction only**

About 50mm, 2 or 3 times

Sandpaper (grade 800 to 1000)

- After smoothing out the pad surface, check the paper feed with a full paper tray.

**3. If it appears that the non-feed is not caused by a defective friction pad:**

Please try adjusting the bottom plate pressure in SP mode (see Kir-C PFU Service Manual).

Model: Kir-C (Paper Bank)

Date: 1-Jun-04

No.: RB040028

**AFFECTED UNITS**

The following are the serial number ranges of paper banks containing the potentially defective friction pads (January to the mid-April 2004 production).

<b>Code</b>	<b>Affected Unit Serial Number</b>
B384-14	From L1034010001 to L1034040026
B384-17	From H8540100001 to H8540400147
B384-26	From 4J50140001 to 4J50440026
B385-14	From L1024010001 to L1024040147
B385-17	From H8440100001 to H8440400479
B385-26	From 4J40140001 to 4J40440026

Reissued: 15-Nov-04

Model: Kir-C	Date: 26-Oct-01	No.: RB040017f
--------------	-----------------	----------------

## RTB Correction

The items in bold italics have been corrected or added.

Subject: ROM History (Kir-C1 Printer Option PS2)		Prepared by: M. Ishihara	
From: 1st Tech. Support Sec. Service Support Dept.			
Classification:	<input type="checkbox"/> Troubleshooting <input type="checkbox"/> Mechanical <input type="checkbox"/> Paper path <input type="checkbox"/> Other (      )	<input type="checkbox"/> Part information <input type="checkbox"/> Electrical <input type="checkbox"/> Transmit/receive	<input type="checkbox"/> Action required <input type="checkbox"/> Service manual revision <input checked="" type="checkbox"/> Retrofit information

We hereby inform you of the firmware history for the Kir-C1 Printer Option PS2.

B4315280	Version	C.SUM	Production
B	1.01	F384	1st Mass Prod.
C	1.02	AD6E	No Production
D	1.03	CAF9	September Prod. '01
E	1.04	F31E	December Prod. '01
F	1.50	E0E7	May Prod. '02
G	1.60	46AC	August Prod. '02
H	1.90	7614	January Prod. '03
<b><i>H195</i></b>	<b><i>1.95</i></b>	<b><i>0A96</i></b>	<b><i>August Prod. '04</i></b>

Symptom Corrected	Version																				
<b><i>Some PS-printfiles are not printed (FPR RE04050019).</i></b>	<b><i>1.95</i></b>																				
Sometimes a PS file made in a UNIX environment cannot be printed.	1.90																				
The individual countermeasure for the BMW is applied to the mass production.	1.90																				
Display of the Euro currency symbol supported with PS drivers used in a UNIX environment.	1.60																				
Printer option now supports Mac OS X ver 10.1 (Native) and newer.	1.50																				
PS error may be displayed when printing from Adobe InDesign Ver. 2.0.	1.50																				
When PS2 firmware ver.1.02 or 1.03 is used on the old Kir-C1 controllers ver.1.00/1.02/1.04, “processing” is displayed on the LCD panel and PS printing is not possible.  *For the old Kir-C1 controller ver.1.00, 1.02 or 1.04, use this PS2 version (=1.04 suffix E), or version 1.01 (suffix B).	1.04																				
<table><tr><td></td><td colspan="3">- PS2 Firmware Version -</td></tr><tr><td>- Controller Firmware -</td><td>Ver.1.01</td><td>Ver.1.03</td><td>Ver.1.04</td></tr><tr><td>Old Kir-C1 Controller Ver.1.00, 1.02 or 1.04</td><td>OK</td><td>NG</td><td>OK</td></tr><tr><td>New Kir-C1 Controller Ver.Vd.1.00</td><td>NG</td><td>OK</td><td>OK</td></tr><tr><td>Stella series Controller</td><td>NG</td><td>OK</td><td>OK</td></tr></table>		- PS2 Firmware Version -			- Controller Firmware -	Ver.1.01	Ver.1.03	Ver.1.04	Old Kir-C1 Controller Ver.1.00, 1.02 or 1.04	OK	NG	OK	New Kir-C1 Controller Ver.Vd.1.00	NG	OK	OK	Stella series Controller	NG	OK	OK	
	- PS2 Firmware Version -																				
- Controller Firmware -	Ver.1.01	Ver.1.03	Ver.1.04																		
Old Kir-C1 Controller Ver.1.00, 1.02 or 1.04	OK	NG	OK																		
New Kir-C1 Controller Ver.Vd.1.00	NG	OK	OK																		
Stella series Controller	NG	OK	OK																		
The printer does not work when printing from the PS driver and Tray 1 has been set as to a custom size in User Tools→ System Settings.	1.03																				
If the memory full condition occurs when printing from the PS driver with Rotate Collate, the image is printed out upside-down after the condition is cleared.	1.03																				

**Reissued: 15-Nov-04**

Model: Kir-C	Date: 26-Oct-01	No.: RB040017f
--------------	-----------------	----------------

Symptom Corrected	Suffix
The PS font list comes out reduced, and is printed out continuously until paper end. This symptom occurs with new Kir-C Controller firmware vd.1.00 (which incl. duplex function) and all Stella series controllers.	1.02
With PS 300dpi printing from a Mac application, the font comes out enlarged on the cover page.	1.02
Incorrect resolution values appear in the Get Info pull-down menu on Mac operating systems.	1.02
When printing from Dazel using the PS driver (SEF feed), a Load Tray error happens and the file cannot be printed out.	1.02
After printing out the PS Font List, a paper jam occurs while printing out the Configuration Page. Following this, the PS Font list cannot be printed out even after jam recovery.	1.02

Reissued: 22-Apr-05

Model: Kir-C	Date: 18-Sep-02	No.: RB040025b
--------------	-----------------	----------------

## RTB Correction

The items in bold italics have been corrected or added.

Subject: ROM History (Kir-C1 Printer NIB Option)		Prepared by: M. Ishihara	
From: 1st Tech. Support Sec. Service Support Dept.			
Classification:	<input type="checkbox"/> Troubleshooting <input type="checkbox"/> Mechanical <input type="checkbox"/> Paper path <input type="checkbox"/> Other (      )	<input type="checkbox"/> Part information <input type="checkbox"/> Electrical <input type="checkbox"/> Transmit/receive	<input type="checkbox"/> Action required <input type="checkbox"/> Service manual revision <input checked="" type="checkbox"/> Retrofit information

We hereby inform you of firmware history for the Kir-C1 Printer NIB Option.

B4305000	Version	C.SUM	Production
-	6.19	B2AA	1st Mass Prod.
A	6.29c	A297	September Prod. '02
B	6.31as	8EAC	June Prod. '03
<b>C</b>	<b>6.34as</b>	<b>A361</b>	<b>April Prod.'05</b>

Symptom Corrected	Suffix
<b><i>A DoS (denial of service) attack occurs when a specially-crafted ICMP packet is received.</i></b> <b><i>Note: Refer to TechMail #OTS-2005-404 and Secunia advisory SA13475 (<a href="http://secunia.com/advisories/13475/">http://secunia.com/advisories/13475/</a>).</i></b>	<b>C</b>
Modified so that the SNMP read community name can be changed in Batch Configuration (Web SmartNetMonitor).	B
Removed IP address acquisition method ARP+PING.	B



**Reissued: 22-Apr-05**

Model: Kir-C	Date: 18-Sep-02	No.: RB040025b
--------------	-----------------	----------------

Symptom Corrected	Suffix
IP Protocol can now Enabled or Disabled in the Web browser.	A
<p>You can change the SNMP Community Name and enable/disable SNMP port after updating firmware according to the following procedure.</p> <p>1) Type "http://&lt;IP address&gt;/tcpipenables" into URL Web browser or use MAP  2) Change or confirm the check box of each port or input community name  3) Click "Accept Settings" button after inputting password (default password is "sysadm")  4) Return to home and reset or recycle the power  5) Your settings will be reflected  See next page "Appendix".</p> <p>NOTE: After setting HTTP disable, you cannot access the target device through web browser or MAP. If your want to change the settings, please set "Restore Factory Defaults" by telnet. When "telnet" port is set to disable, please change the jumper pin on board to set "Factory Defaults".</p>	A
<p>Change in Specification:</p> <p>※ SNMP vulnerability:  SNMP security vulnerabilities reported by CERT on Feb.12, 2002 have been resolved and verified using the PROTONS c06-snmpv1 test suite.</p> <p>-CERT: <a href="http://www.cert.org/advisories/CA-2002-03.html">http://www.cert.org/advisories/CA-2002-03.html</a>  -PROTONS c06-snmpv1 test suite:  <a href="http://www.ee.oulu.fi/research/ouspg/protos/testing/c06/snmpv1/">http://www.ee.oulu.fi/research/ouspg/protos/testing/c06/snmpv1/</a></p>	A
SAP interval time can now be adjusted.	A
Supports connection with NetWare6.	A

Reissued: 22-Apr-05

Model: Kir-C	Date: 18-Sep-02	No.: RB040025b
--------------	-----------------	----------------

## Appendix

The screenshot shows a web browser window titled "RICOH Aficio 1013/RICOH Network Printer D Model-TCP/IP Services Configuration Menu - Microsoft Internet Explorer". The address bar shows "http://133.139.166.227/tcpipenables". The main content area displays the configuration menu for the printer.

**RICOH Aficio 1013/RICOH Network Printer D Model**

Unit Serial Number 980206

**TCP/IP Services Configuration Menu**

**LPD Settings**  
Enable LPD: ☒

**Enable TCP/IP Services**  
☒ HTTP   ☒ IPP   ☒ SNMP   ☒ Telnet   ☒ FTP   ☒ Raw Sockets

SNMP Read/Write Community Name:

SNMP Read Community Name:

**A password is required to perform this function.**

The status bar at the bottom shows "Done" and "Local intranet".

Model: Kir-2		Date: 25-Oct-05	No.: RB121029
Subject: Important Notes for replacement of the PM parts		Prepared by: H. Saitoh	
From: 1st Tech. Support Sec. Service Support Dept.			
Classification:	<input type="checkbox"/> Troubleshooting <input type="checkbox"/> Mechanical <input type="checkbox"/> Paper path <input checked="" type="checkbox"/> Other (      )	<input type="checkbox"/> Part information <input type="checkbox"/> Electrical <input type="checkbox"/> Transmit/receive	<input type="checkbox"/> Action required <input type="checkbox"/> Service manual revision <input type="checkbox"/> Retrofit information

**This RTB applies to the following models:**

Kir-C1, Kir-C2, Kir-C2.5 (B039, B120, B121, B122, B123, B259, B260, B261)

## Important Note Regarding PM Parts for the Kir-C1 and Kir-C2/2.5

The PM parts in **bold** below are unique to specific models.

- Be sure to use the parts in **bold** in Table 1 **only with** the Kir-C2 and Kir-C2.5
- Be sure to use the parts in **bold** in Table 2 **only with** the Kir-C1.

**Note:** If you use these unique parts on the wrong model, the machine may not work correctly.

**Table 1: PM parts for the Kir-C2 and Kir-C2.5**

Part Number	Description	PM Interval
Paper Feed		
B0392740	Paper Feed Roller	120k
B0392711	Friction Pad	120k
Transfer Roller Unit		
B0393820	Transfer Roller	120k
Fusing Unit		
<b>AE011105</b>	<b>Hot Roller</b>	<b>120k</b>
<b>AE020150</b>	<b>Pressure Roller</b>	<b>120k</b>
AE044040	Stripper Pawl	120k
G0294174	Pressure Roller Bushing	120k
AE042063	Fusing Cleaning Roller	120K
Photoconductor Unit		
AD027018	Roller Charge A3	60k
<b>AD042058</b>	<b>Cleaning Sponge – Charge Roller</b>	<b>60k</b>
B0392335	Pickoff Pawl	60k
<b>AD042059</b>	<b>Cleaning Blade</b>	<b>60k</b>
B0399510	OPC Drum	60k

Model: Kir-2

Date: 25-Oct-05

No.: RB121029

**Table 2: PM parts for the Kir-C1**

Part Number	Description	PM Interval
Paper Feed		
B0392740	Paper Feed Roller	120k
B0392711	Friction Pad	120k
Transfer Roller Unit		
B0393820	Transfer Roller	120k
Fusing Unit		
<b>AE011065</b>	<b>Hot Roller</b>	<b>60k</b>
<b>AE020100</b>	<b>Pressure Roller</b>	<b>120k</b>
AE044040	Stripper Pawl	120k
G0294174	Pressure Roller Bushing	120k
Photoconductor Unit		
AD027018	Roller Charge A3	60k
<b>G0602326</b>	<b>Charge Roller Cleaner</b>	<b>60k</b>
B0392335	Pickoff Pawl	60k
<b>B0392289</b>	<b>Cleaning Blade</b>	<b>60k</b>

Model: K-C1		Date: 1-Jul-15	No.: RB040029
Subject: Parts Catalog Correction_Optical Housing Cover		Prepared by: Y.Suzuki	
From: 2nd Tech Service Sect., MFP/P Tech Service Dept.			
Classification:	<input type="checkbox"/> Troubleshooting <input type="checkbox"/> Mechanical <input type="checkbox"/> Paper path <input type="checkbox"/> Product Safety	<input checked="" type="checkbox"/> Part information <input type="checkbox"/> Electrical <input type="checkbox"/> Transmit/receive <input type="checkbox"/> Other (     )	<input type="checkbox"/> Action required <input type="checkbox"/> Service manual revision <input type="checkbox"/> Retrofit information <input type="checkbox"/> Tier 2

Old part number	New part number	Description	Q'ty	Page	Index
B0391971	B0391972	Optical Housing Cover	1	21	12

**Change:** This part is supplied separately.

**Reason:** To comply with Import/Export regulations.

