

40MB Memory Card

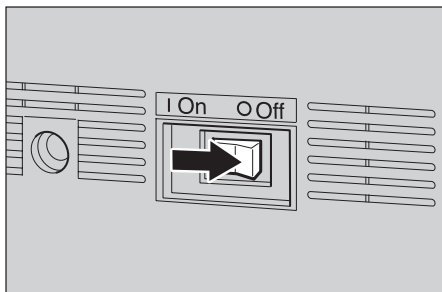
INSTALLATION PROCEDURE FOR CUSTOMERS

For Code: H556/H557 Facsimile Machines

Important

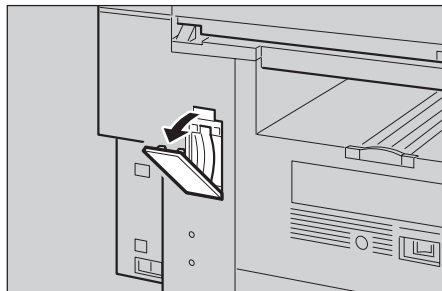
- ☐ Turn the power switch off before installing cards, otherwise they could be damaged.
- ☐ Fax files stored in memory will not be deleted while the optional 40MB memory card is installed.
- ☐ When you install the optional 40MB memory card, make sure that 100% is shown on the display, and then turn off the power switch.
- ☐ If you want to use the machine without the optional 40MB memory card installed, contact your service representative. If you turn the power on after removing the optional 40MB memory card, a high-pitched alarm sounds and the machine will not start up. If the alarm sounds when you turn the power on after installing the optional 40MB memory card, see Chapter4 "Solving Problems", Basic Features.

1 Turn off the power switch.



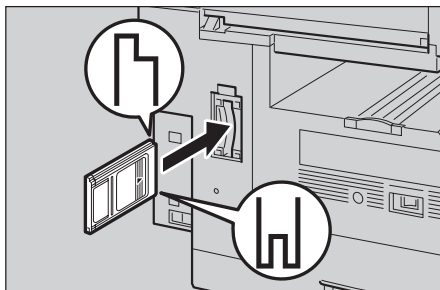
ZFWH350E

2 Open the memory card cover on the left side of the machine.

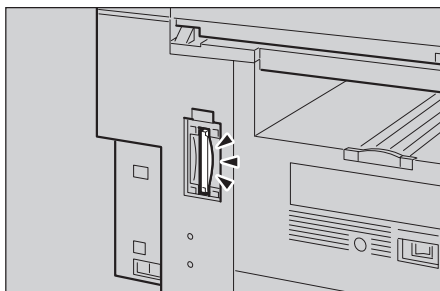


ZHMP040E

3 Insert the optional 40MB memory card carefully into the slot.



ZHMP050E

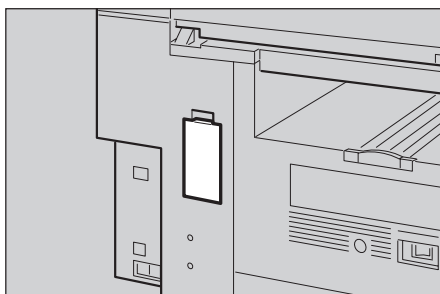


ZHMP060E

Note

- ☐ Insert the optional 40MB memory card firmly, otherwise the machine may not work properly.

4 Close the memory card cover.



ZHMP030E

5 Turn the power switch on.