

**Reissued:12-Jan-06**

Model: CM-C1	Date: 12-Jan-06	No.: RB273001a
--------------	-----------------	----------------

**RTB Correction**

The items in bold italics have been corrected or added.

Subject: Countermeasure for poor image quality		Prepared by: T. Shintani	
From: 1st Tech. Support Sec. Service Support Dept.			
Classification:	<input checked="" type="checkbox"/> Troubleshooting	<input type="checkbox"/> Part information	<input type="checkbox"/> Action required
	<input type="checkbox"/> Mechanical	<input type="checkbox"/> Electrical	<input type="checkbox"/> Service manual revision
	<input type="checkbox"/> Paper path	<input type="checkbox"/> Transmit/receive	<input type="checkbox"/> Retrofit information
	<input type="checkbox"/> Product Safety	<input type="checkbox"/> Other (      )	

**SYMPTOM:**

The copy image is light. (Printer image is not affected; this only concerns the copy image)

**CAUSE:**

1. Limitation as set by specification.	2. Cannot maintain " <b><i>Threshold level</i></b> " correctly in platen copy mode.
--	---

**ACTION TAKEN:**

<p><b>Step1:</b> Change the default setting from "<b><i>Mix</i></b>" to "<b><i>Text</i></b>" as shown below:</p> <ol style="list-style-type: none"> <li>1. Push the "Menu" button.</li> <li>2. Change the function to "Copy Set-up" using the scroll function.</li> <li>3. Select the function; Default change -&gt; Original type, then set to "Text".</li> </ol> <p><b>Step2:</b> Change the default setting from "Normal" to "Darken".</p> <ol style="list-style-type: none"> <li>1. Push the "Menu" button.</li> <li>2. Change the function to "Copy setup" using the scroll function.</li> <li>3. Select the function to "Default change -&gt; Darkness, then set to "Darken".</li> </ol>	<p><b>Step1:</b> Open and close the platen cover if the document is on the exposure glass.</p> <p><b>Reason</b></p> <p>When the customer gets a light image when using the platen glass, the copy image gets lighter over the passage of time. As a result, the machine cannot keep the "Slash hold level" over longer periods of time. Therefore, you must force the machine to detect the "Slash hold level" when you open and close the platen cover.</p> <p>* We will issue a more detailed RTB concerning this matter at a later date.</p>
--	---

Model: Model CM-C1		Date: 1-Feb-06	No.: RB273002
Subject: Limitation for using the USB memory stick		Prepared by: T.Shintani	
From: 1st Tech. Support Sec. Service Support Dept.			
Classification:	<input type="checkbox"/> Troubleshooting <input type="checkbox"/> Mechanical <input type="checkbox"/> Paper path <input checked="" type="checkbox"/> Other (      )	<input type="checkbox"/> Part information <input type="checkbox"/> Electrical <input type="checkbox"/> Transmit/receive	<input type="checkbox"/> Action required <input type="checkbox"/> Service manual revision <input type="checkbox"/> Retrofit information

## Important Notes on the Specifications of the USB Flash Drive Port

- The USB Flash Drive Port supports the following:
  - Connection method: **USB 1.1 only**
  - Memory stick capacity: **512MB or less**



- The **recommended memory sticks** are as follows:

No.	Vendor	Model Name	Capacity
1	locell	Celldisk2.0	128MB
2	StormBlue	Memorydrive	512MB
3	KingMax	KingMax	512MB
4	Sony	MicdoValue	256MB
5	Sarotech	Flex Drive 2.0	512MB
6	AL-Tech	Anydrive 2.0	256MB
7	Transend	Jet Flash	1GB
8	Sandisk	Cruser mini	128MB
9	HANA Micron	Axis Mobile Disk 1.1	64MB
10	HANA Micron	Axis Mobile Disk 2.0	64MB
11	Innator	Xdrive 2.0	128MB
12	SKC	Ezstick	128MB
13	Iomega	Mini Drive	128MB
14	Shin-Oh	MiniBank	128MB
15	CoolGate	Coolgate	128MB
16	Fulex	Fulex	128MB
17	Jung Soft	Nexdisk	32MB
18	KMF	UniDrive	128MB
19	MemoRive	MemoRive	128MB
20	Bayon	eXtreme	128MB
21	Cellgino	Cellgino4	128MB
22	Selfdisk	Elegance	128MB
23	Samsung	YP-55 (MP3 player)	256MB



**Reissued: 06-Feb-07**

Model: Model CM-C1	Date: 20-Jul -06	No.: RB273003a
--------------------	------------------	----------------

**RTB Reissue**

The items in bold italics have been added.

Subject: Firmware history		Prepared by: T.Shintani	
From: Technical Services Sec., Service Planning Dept.			
Classification:	<input type="checkbox"/> Troubleshooting <input type="checkbox"/> Mechanical <input type="checkbox"/> Paper path <input type="checkbox"/> Other (      )	<input type="checkbox"/> Part information <input type="checkbox"/> Electrical <input type="checkbox"/> Transmit/receive	<input checked="" type="checkbox"/> Action required <input type="checkbox"/> Service manual revision <input type="checkbox"/> Retrofit information

This is to inform you of the firmware history for Model CM-C1.

Part Number	Version	Production
<b><i>B273610</i></b>	<b><i>6.10</i></b>	<b><i>January 2007 production</i></b>
B273606	6.06	March. 2006 production
B273601	6.01	First mass production

**Descriptions of changes**

Symptom Corrected, Other Changes	Version
<b><i>Symptoms corrected:</i></b> <b><i>1. During fax reception, the machine stalls and displays "Printing...".</i></b> <b><i>2. During fax reception, the machine stalls and displays "Please wait...".</i></b>	<b><i>6.10</i></b>
1. Sometimes, a fax cannot be sent when the handset is used. 2. The SYS OBJECT ID for the NIC was corrected. Incorrect (for HP models): 1.3.6.1.4.1.11.2.3.9.1 Correct (for Ricoh model): 1.3.6.1.4.1.367.1.1 3. After Scan Power Save mode, if we initiate NetScan, in the Netscan application it will be shown as Unknown Error for sometime. 4. Sometimes, the image density is too low when copies are made using the platen cover.	6.06
Regular upgrade: Improved management of energy saver function.	6.01

Model: Model CM-C1		Date: 20-Jul-06	No.: RB273004
Subject: Network firmware history		Prepared by: T.Shintani	
From: Technical Services Sec., Service Plannning Dept.			
Classification:	<input type="checkbox"/> Troubleshooting <input type="checkbox"/> Mechanical <input type="checkbox"/> Paper path <input type="checkbox"/> Other (      )	<input type="checkbox"/> Part information <input type="checkbox"/> Electrical <input type="checkbox"/> Transmit/receive	<input checked="" type="checkbox"/> Action required <input type="checkbox"/> Service manual revision <input type="checkbox"/> Retrofit information

This is to inform you of the firmware history for Model CM-C1.

Part Number	Version	Production
<b>B273120</b>	<b>1.01.20</b>	<b>March. 2006 production</b>
B273117	1.01.17	First mass production

## Descriptions of changes

Symptom Corrected, Other Changes	Version
<p><b><i>Please update the Network FW V1.01.20 with Engine FW V6.06</i></b></p> <p><b><i>1. Sometimes, a fax cannot be sent when the handset is used.</i></b></p> <p><b><i>2. The SYS OBJECT ID for the NIC was corrected.</i></b></p> <p><b><i>Incorrect (for HP models): 1.3.6.1.4.1.11.2.3.9.1</i></b></p> <p><b><i>Correct (for Ricoh model): 1.3.6.1.4.1.367.1.1</i></b></p> <p><b><i>3. After Scan Power Save mode, if we initiate NetScan, in the Netscan application 'Unknown Error' appears.</i></b></p> <p><b><i>4. Sometimes, the image density is too low when copies are made using the platen cover.</i></b></p>	<b>1.01.20</b>
Regular upgrade: Improved management of energy saver function.	6.01

Model: Model CM-C1		Date: 04-Aug-06	No.: RB273005
Subject: Replacement&Adjustment / Specification		Prepared by: T.Shintani	
From: Technical Services Sec., Service Planning Dept.			
Classification:	<input type="checkbox"/> Troubleshooting <input type="checkbox"/> Mechanical <input type="checkbox"/> Paper path <input type="checkbox"/> Other (      )	<input type="checkbox"/> Part information <input type="checkbox"/> Electrical <input type="checkbox"/> Transmit/receive	<input type="checkbox"/> Action required <input checked="" type="checkbox"/> Service manual revision <input type="checkbox"/> Retrofit information

The Service Manual was changed as follows.

- **Add** the replacement procedure for the network board.

## 3.19 Network Board

1. Open the side cover (Cover – Memory) [A].

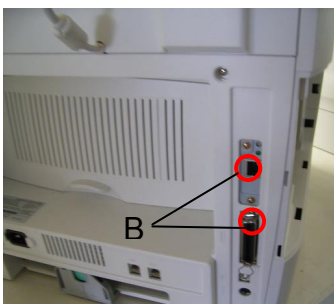
1.



A

2. Remove the 2 screws [B].

2.



B

3. Remove the network board [C].

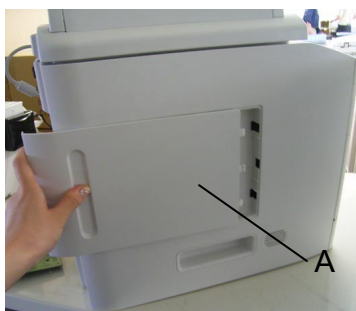
3.



C

4. Close the side cover (Cover – Memory) [A].

4.



A

Model: Model CM-C1

Date: 04-Aug-06

No.: RB273005

- **Change** the following table:  
(**Delete** “1” and “60” from the Energy Mode settings).

## 1. GENERAL SPECIFICATIONS

Configuration	Desktop	
Paper capacity	Main tray	250 sheets
	By-pass tray	50 sheets
	Optional paper feed unit	250 sheets
	Output tray	Face down: 150 sheets Face up: 1 sheet
Paper size	Main tray	A4, Letter, Legal, Folio, Executive, B5
	By-pass tray	Envelope 63/4, 73/4, #9, #10, DL, C5, B5
Paper weight	Main tray	60-90 g/m <sup>2</sup> (16-24 lb.)
	By-pass tray	60-163 g/m <sup>2</sup> (16-43 lb.)
Paper size	Maximum	216 x 356mm (8.5 x 14 inch)
	Minimum	76 x 127mm (3.5 inch)
ADF	Paper weight	47-105 g/m <sup>2</sup> (12.5-28 lb.)
	Capacity	50 sheets
	Width	142 x 216mm (5.6x 8.5 inch)
	Length	148 x 356mm (5.8 x 14 inch)
Network	Protocol	SPX/IPX, TCP/IP, Ethertalk, SNMP, HTTP 1.1, DLC/LLC
Machine size (W*D*H)	450 x 423 x 456 mm (17.7 x 16.7 x 18 inch)	
Weight	With toner cartridge	15.6 Kg (34.3 lb)
	Without toner cartridge	14.8 Kg (32.6 lb)
Operation panel	16 x 2 characters	
Interface option	USB 2.0	
Total Counter	Electric Counter	
Environmental Standard	US version:	Energy Star Tier 1
	EU version:	BAM specifications
Energy Saver Mode	Selectable 4/5/15/30/45/ <del>60</del> -minutes	

Model: Model CM-C1		Date: 6-Nov-06	No.: RB273006
Subject: Light copy image		Prepared by: T.Shintani	
From: 1st Tech. Support Sec. Service Support Dept.			
Classification:	<input type="checkbox"/> Troubleshooting <input type="checkbox"/> Mechanical <input type="checkbox"/> Paper path <input type="checkbox"/> Other (      )	<input type="checkbox"/> Part information <input type="checkbox"/> Electrical <input type="checkbox"/> Transmit/receive	<input checked="" type="checkbox"/> Action required <input type="checkbox"/> Service manual revision <input type="checkbox"/> Retrofit information

## Symptom

Light copy images occur under the following conditions.

Case 1: The operator turns the power ON, and then opens the DF/platen cover before the machine reaches the Ready condition

Case 2: The operator opens the DF/platen cover, waits a long time, and then makes a copy of an original on the exposure glass.

## Cause

The machine's white level is not at optimum value.

Case 1: Every time the DF/platen cover is opened and closed, the machine flashes light at the white plate to set the machine's "white level". If the cover is opened and closed before the Ready condition is reached, the light used is weaker than normal. As a result, the white level will be darker than normal, which lowers the image density.

Case 2: The machine sets the white level when the DF/platen cover is opened and closed, but it cannot retain the white level for a long time. The longer the cover is not opened and closed, the darker the white level becomes.

## Solution

- Advise users to do the following:
  - Case 1: Open the DF/platen cover after the machine has reached the Ready condition.
  - Case 2: If you open and close the DF/platen cover, start the copy job soon.
- If the symptom is reported, advise users to open and close the DF/platen cover. The machine will re-set the white level.

**Reissued:27-Mar-07**

Model: CM-C1	Date: 12-Mar-07	No.: RB273007a
--------------	-----------------	----------------

## RTB Correction

The items in bold italics have been corrected or added.

Subject: Machine stall problem		Prepared by: T. Shintani	
From: 1st Tech. Support Sec. Service Support Dept.			
Classification:	<input type="checkbox"/> Troubleshooting <input type="checkbox"/> Mechanical <input type="checkbox"/> Paper path <input type="checkbox"/> Product Safety	<input type="checkbox"/> Part information <input type="checkbox"/> Electrical <input type="checkbox"/> Transmit/receive <input type="checkbox"/> Other (     )	<input checked="" type="checkbox"/> Action required <input type="checkbox"/> Service manual revision <input type="checkbox"/> Retrofit information

## Symptom

*The machine stalls just before printing out a fax. "Printing..." or "Please Wait..." is then displayed on the operation panel.*

**Note:**

- *In some cases, the condition cannot be cleared by turning the main power off/on.*
- *This symptom has only been reported in the NA and EU markets. This has not been reported in the China or Asia markets.*

## Cause

*Firmware specification.*

## Solution

**Production line:**

*The firmware was modified to correct this symptom.*

*Applied from: Feb. 2007 production (see below for cut-in S/N).*

**New versions:**

**C1: Ver. 6.10**

**C1L: Ver. 6.04**

**Warehouse stock:**

*The modified firmware has been installed in some machines in warehouse stock (see S/N below).*

**Machines in the field:**

- In as many cases as possible, request customers to upgrade the firmware to the new versions mentioned above.*  
**Note:** *The Printer Setting Utility necessary to do the procedure is already contained in the CD-ROM provided with the machine. (The firmware upgrade procedure for customers will be provided).*
- If the customers cannot upgrade the firmware by themselves, send a CE to the site to upgrade the firmware.*  
**Note:** *See the Firmware Upgrade Procedure for CEs on the next page.*
- For customers whom you cannot contact, send a CE to the site to upgrade the firmware if these customers report the symptom.*
- If the machine condition is such that the firmware upgrade cannot be performed:*
  - *Replace the main board, or*
  - *Turn the machine off and leave it unused for at least 43 hours*



Reissued:27-Mar-07

Model: CM-C1

Date: 12-Mar-07

No.: RB273007a

**Firmware Upgrade Procedure**

1. Turn the machine main power switch on.
2. Connect the PC to the machine with a USB cable.
3. Open the Printer Setting Utility on the PC.
4. Upgrade the firmware to the latest version (see version names above).
5. Press the following keys, in order:  
Menu → # → 1 → 9 → 3 → #
6. If the new firmware version is displayed, push the "Clear/Stop" button.
7. If the new firmware version is not displayed, do Steps 2-6 again.

If you need more information to do this procedure, see the Service Manual.

**Serial Number Information**

The new firmware is installed on the following machines:

**Production line:**

Product code: B273 -17 -27 -21- 29    From K9978600001 onward

**Warehouse stock:**

- Product code: B273-17

Warehouse in Japan: K9969600001 to K9969600528 (528 machines)

Warehouse in N.A. (REI): All machines with two blue labels (●) attached near the barcode on the outer box (607 machines).

- Product code: B273-27

Warehouse in EU (BoZ): All machines with two blue labels (●) attached near the barcode on the outer box (2,493 machines).

**Reissued: 07-Feb-08**

Model: Model CM-C1	Date: 20-Jul -06	No.: RB273003b
--------------------	------------------	----------------

**RTB Reissue**

The items in bold italics have been added.

Subject: Firmware history		Prepared by: T.Shintani	
From: Technical Services Sec., Service Planning Dept.			
Classification:	<input type="checkbox"/> Troubleshooting <input type="checkbox"/> Mechanical <input type="checkbox"/> Paper path <input type="checkbox"/> Other (      )	<input type="checkbox"/> Part information <input type="checkbox"/> Electrical <input type="checkbox"/> Transmit/receive	<input checked="" type="checkbox"/> Action required <input type="checkbox"/> Service manual revision <input type="checkbox"/> Retrofit information

This is to inform you of the firmware history for Model CM-C1.

Part Number	Version	Production
<b><i>B273611</i></b>	<b><i>6.11</i></b>	<b><i>October 2007 production</i></b>
B273610	6.10	January 2007 production
B273606	6.06	March. 2006 production
B273601	6.01	First mass production

**Descriptions of changes**

Symptom Corrected, Other Changes	Version
<b><i>Symptom corrected:</i></b> <b><i>1. Scanner Lock problem happens when closing the print cover after "Initializing" and doing "PC scan" or "Memory stick scan".</i></b> <b><i>2. Printing via LPR generates empty pages.</i></b> <b><i>3. Output format of fonts does not align with table in form printing. (GFPR#RA07040001)</i></b> <b><i>4. Abnormal printing of ruled lines in form printing. (GFPR#RA7060001)</i></b>	<b><i>6.11</i></b>
Symptoms corrected: 1. During FAX reception, the machine stalls and displays "Printing...". 2. During FAX reception, the machine stalls and displays "Please wait...".	6.10
1. Sometimes, a FAX cannot be sent when the handset is used. 2. The SYS OBJECT ID for the NIC was corrected. Incorrect (for HP models): 1.3.6.1.4.1.11.2.3.9.1 Correct (for Ricoh model): 1.3.6.1.4.1.367.1.1 3. After Scan Power Save mode, if we initiate NetScan, in the Netscan application it will be shown as Unknown Error for sometime. 4. Sometimes, the image density is too low when copies are made using the platen cover.	6.06
Regular upgrade: Improved management of energy saver function.	6.01

Model: Model CM-C1		Date: 8-Aug-08	No.: RB273008
Subject: Pressure roller melts to the hot roller		Prepared by: T. Shintani	
From: 1st Tech. Support Sec. Service Support Dept.			
Classification:	<input type="checkbox"/> Troubleshooting <input type="checkbox"/> Part information <input type="checkbox"/> Action required <input type="checkbox"/> Mechanical <input type="checkbox"/> Electrical <input type="checkbox"/> Service manual revision <input type="checkbox"/> Paper path <input type="checkbox"/> Transmit/receive <input type="checkbox"/> Retrofit information <input checked="" type="checkbox"/> Other (      )		

## Symptom

Pressure roller melts to the hot roller at installation or during usage.

## Cause

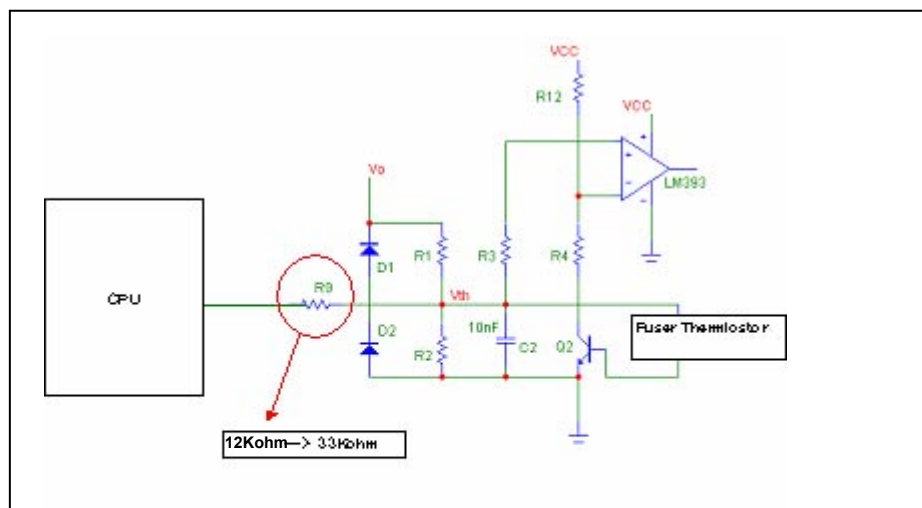
If the machine receives abnormal electrical noise (which can be generated by surges or static electricity), it may cause the fusing unit to malfunction.

1. Abnormal noise causes the CPU to lock up, and once it's locked up, it cannot control the temperature of the fusing lamp.
2. Electronic noise due to electrostatic charge on the paper could potentially interfere at the input point of fusing unit controller.

## Solution

1. Change the R9 resistor on ADC port from 12 Kohm to 33 Kohms. The hardware protection temperature is reduced by about 100 degrees.

The following schematic shows the resistor that must be changed.



Model: Model CM-C1

Date: 8-Aug-08

No.: RB273008

## Cut in S/N

### Model CM-C1

B27317 There is no production.

B27327 K9988720001L 2008.03.19

B27329 K998740001M 2008.03.28

### Model CM-C1L

G95917 After 08/04 production

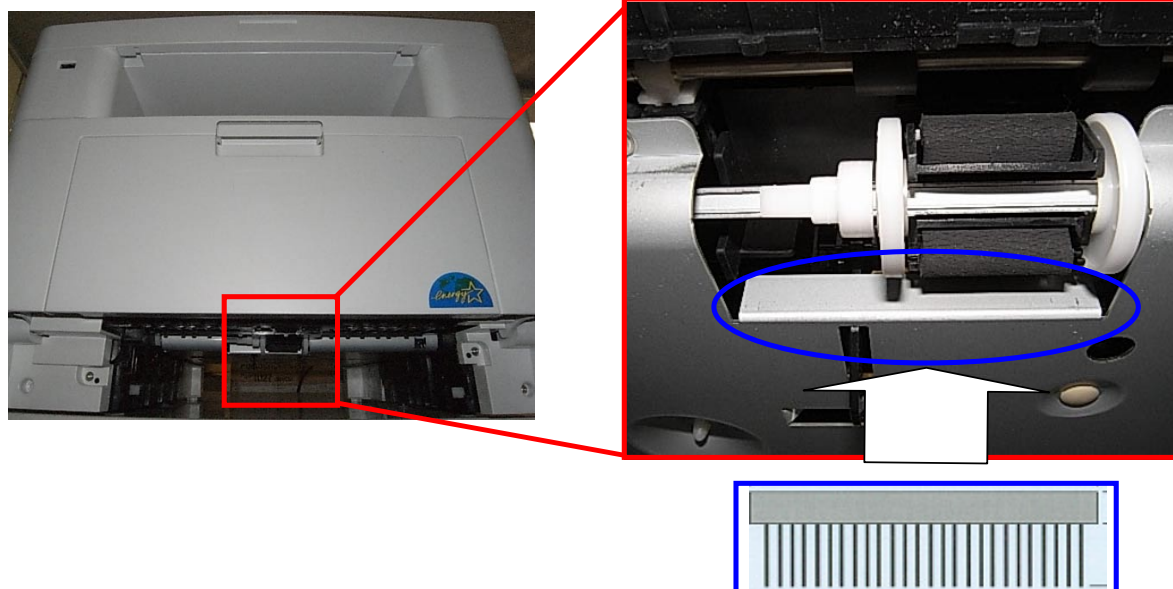
G95927 Q9188720001J 2008.03.19

G92921 Q9100170398L 2008.04.01

2. Add the "Brush-Antistatic" to reduce the electrostatic charge of the paper.

## New part

**G1861344** : Brush-Antistatic



## Cut in S/N

### Model CM-C1

B27317 There is no production.

B27327 K9988520001J (2008.01.25)

B27329 K9988640001M (2008.02.01)

### Model CM-C1L

G95917 Q9188600001G (2008.02.01)

G95927 Q9188620001I (2008.02.22)

G95921 Q9100169678U (2008.02.26)

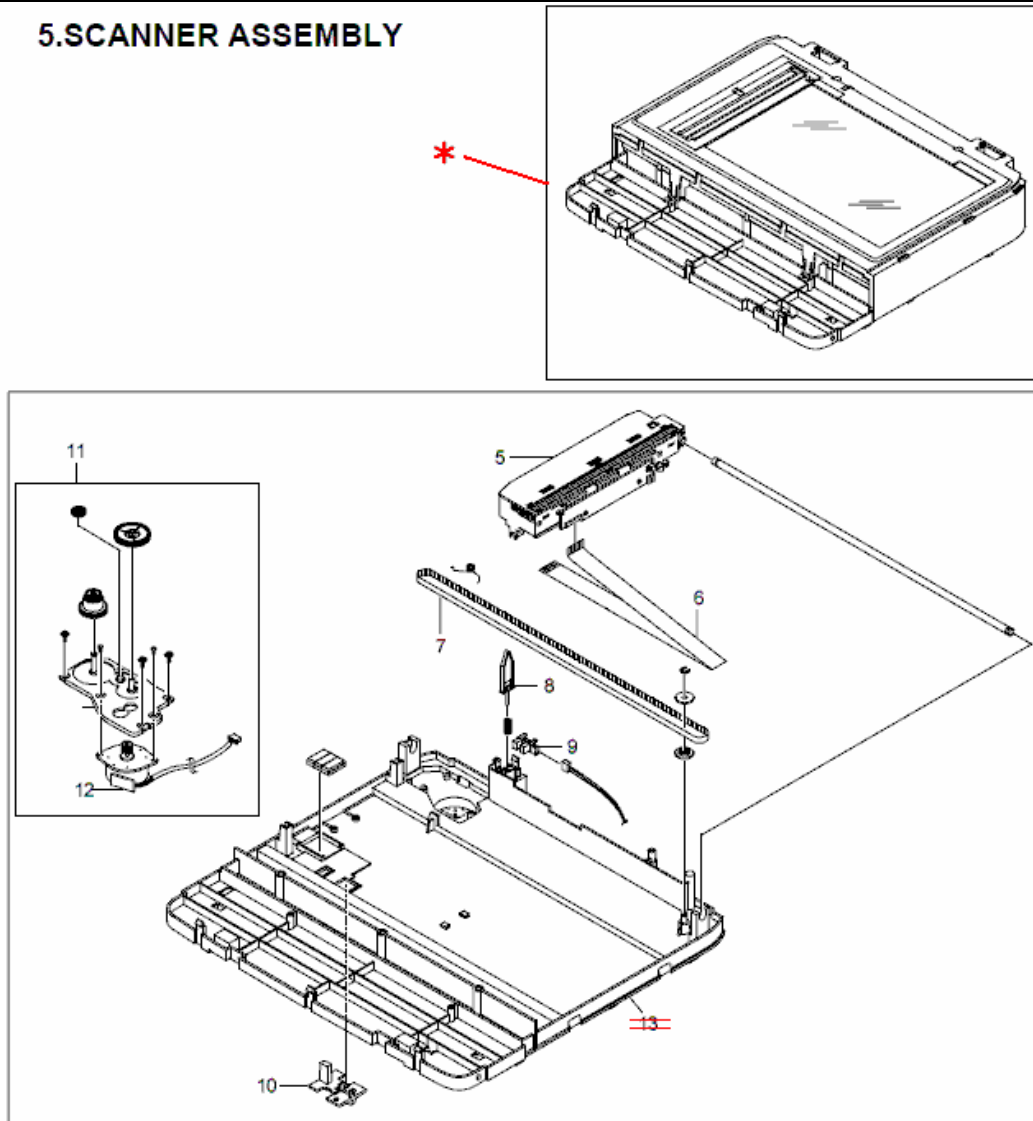
Model: Model CM-C1		Date: 24-Jul-09	No.: RB273009
Subject: Scanner Unit (Scanner Assembly)		Prepared by: Y. Gaman	
From: 1st Tech. Support Sec. Service Support Dept.		Y. Gaman	
Classification:	<input type="checkbox"/> Troubleshooting <input type="checkbox"/> Mechanical <input type="checkbox"/> Paper path <input type="checkbox"/> Product Safety	<input checked="" type="checkbox"/> Part information <input type="checkbox"/> Electrical <input type="checkbox"/> Transmit/receive <input type="checkbox"/> Other (     )	<input type="checkbox"/> Action required <input type="checkbox"/> Service manual revision <input type="checkbox"/> Retrofit information <input type="checkbox"/> Tier 2

**Change:** The lower scanner cover was deleted and the scanner unit was newly registered.  
**Reason:** The parts vendor stopped supplying the cover as an individually replaceable part.

B273/G959

Old part number	New part number	Description	Q'ty	Int	Page	Index	Note
	<b>B2739810</b>	Scanner Unit	1	-	15	*	
<b>B2739582</b>		Cover - Scanner Lower	0	-	15	13	

## 5. SCANNER ASSEMBLY



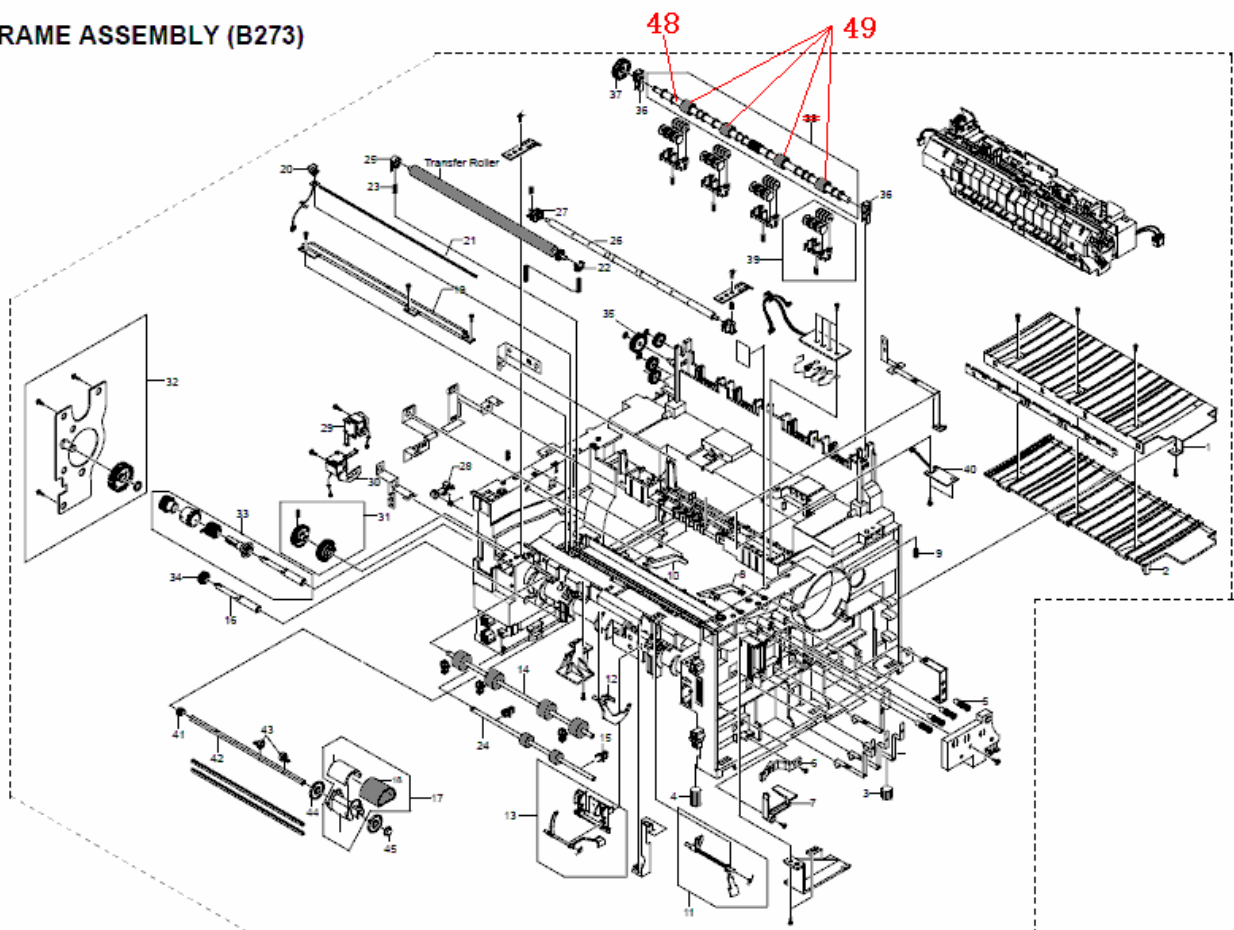
Model: CM-C1		Date: 21-Aug-09	No.: RB273010
Subject: Exit Roller (Frame Assembly)		Prepared by: Y. Gaman	
From: 1st Tech. Support Sec. Service Support Dept.			
Classification:	<input type="checkbox"/> Troubleshooting <input checked="" type="checkbox"/> Part information <input type="checkbox"/> Action required <input type="checkbox"/> Mechanical <input type="checkbox"/> Electrical <input type="checkbox"/> Service manual revision <input type="checkbox"/> Paper path <input type="checkbox"/> Transmit/receive <input type="checkbox"/> Retrofit information <input type="checkbox"/> Product Safety <input type="checkbox"/> Other (      ) <input type="checkbox"/> Tier 2		

**Change:** The assembly in the table below (P/N H9149725) was divided into two parts.

**Reason:** The Parts Catalog was corrected.

Old Part Number	New Part Number	Description	Q'ty	Int	Page	Index	Note
H9149725	H9149725	EXIT ROLLER POLE	1	O/O	14	38→48	
	G1449752	EXIT ROLLER	4			38→49	

## 7.FRAME ASSEMBLY (B273)



Model: CM-C1		Date: 07-Sep-09	No.: RB273011
Subject: Harness-PFU (Optional Paper Feed Unit)		Prepared by: Y. Gaman	
From: 1st Tech. Support Sec. Service Support Dept.			
Classification:	<input type="checkbox"/> Troubleshooting <input type="checkbox"/> Mechanical <input type="checkbox"/> Paper path <input type="checkbox"/> Product Safety	<input checked="" type="checkbox"/> Part information <input type="checkbox"/> Electrical <input type="checkbox"/> Transmit/receive <input type="checkbox"/> Other (     )	<input type="checkbox"/> Action required <input type="checkbox"/> Service manual revision <input type="checkbox"/> Retrofit information <input type="checkbox"/> Tier 2

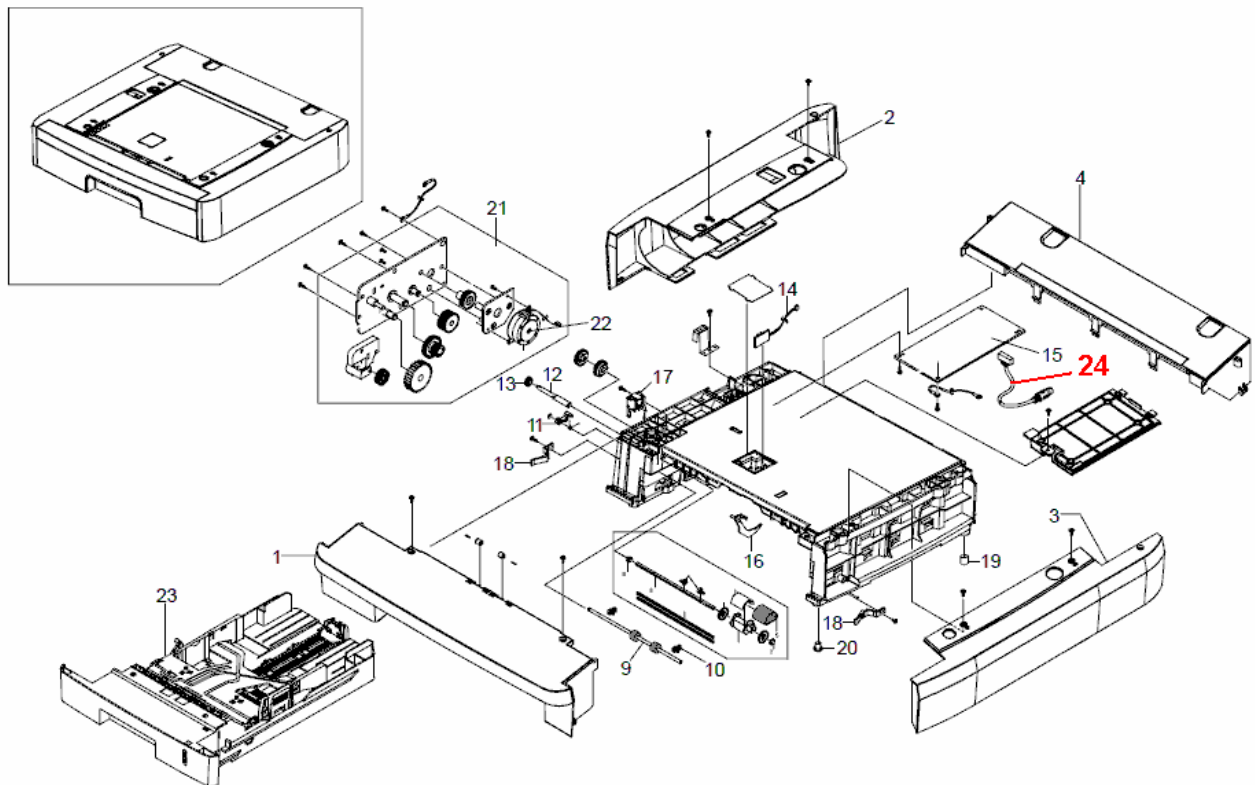
**Change:** This part was added.

**Reason:** Requests from the field.

<B873>

NEW Part	Description	Q'ty	Int	Page	Index	Note
H2389655	HARNESS - PFU	1	-	3	24	

## 1.OPTIONAL PAPER FEED UNIT ASSEMBLY





Model: CM-C1		Date: 02-Jun-10	No.: RB273012
Subject: Parts Catalog correction		Prepared by: K. Nakano	
From: 2nd Overseas Tech Support Sec. 2nd PQM Dept			
Classification:	<input type="checkbox"/> Troubleshooting <input type="checkbox"/> Mechanical <input type="checkbox"/> Paper path <input type="checkbox"/> Other (      )	<input checked="" type="checkbox"/> Part information <input type="checkbox"/> Electrical <input type="checkbox"/> Transmit/receive	<input type="checkbox"/> Action required <input type="checkbox"/> Service manual revision <input type="checkbox"/> Retrofit information <input type="checkbox"/> Tier2

## Change:

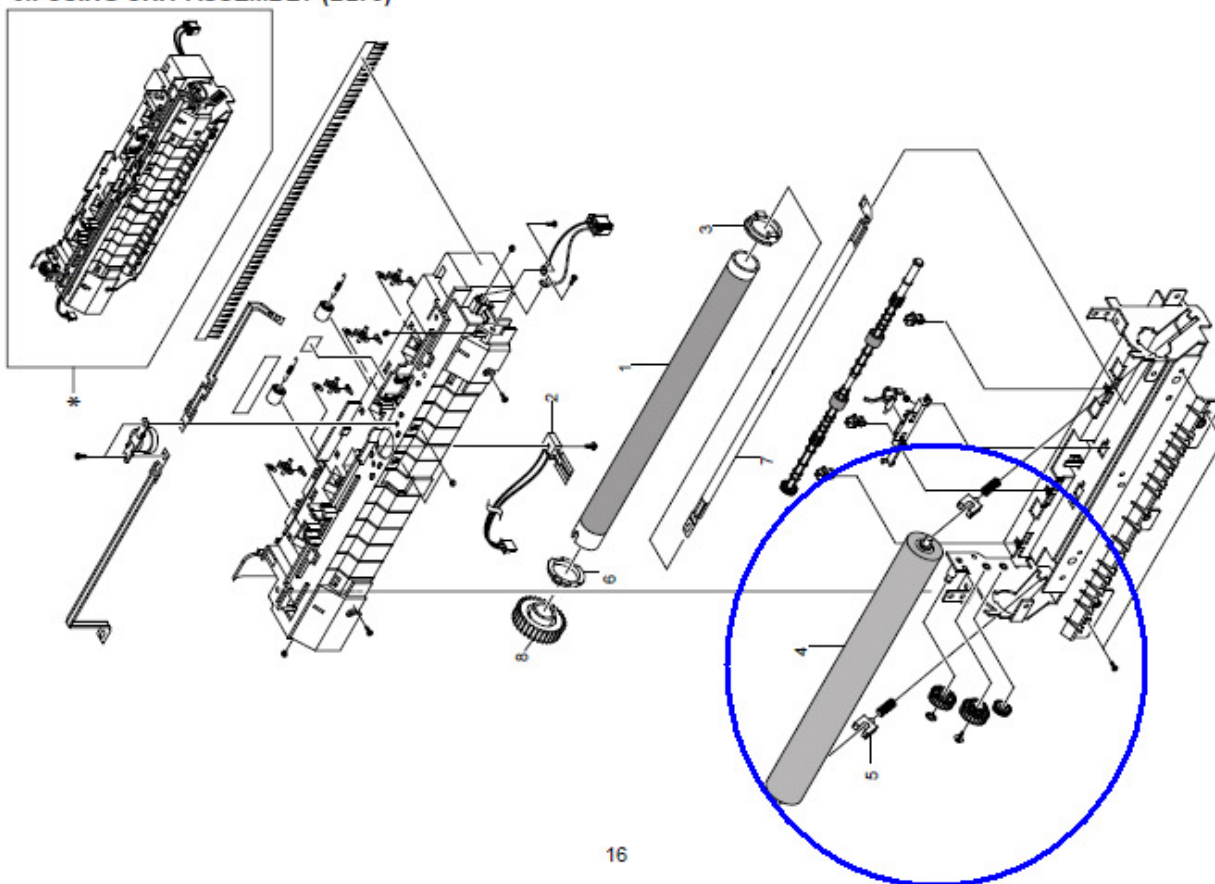
The following service parts are added.

## Reason:

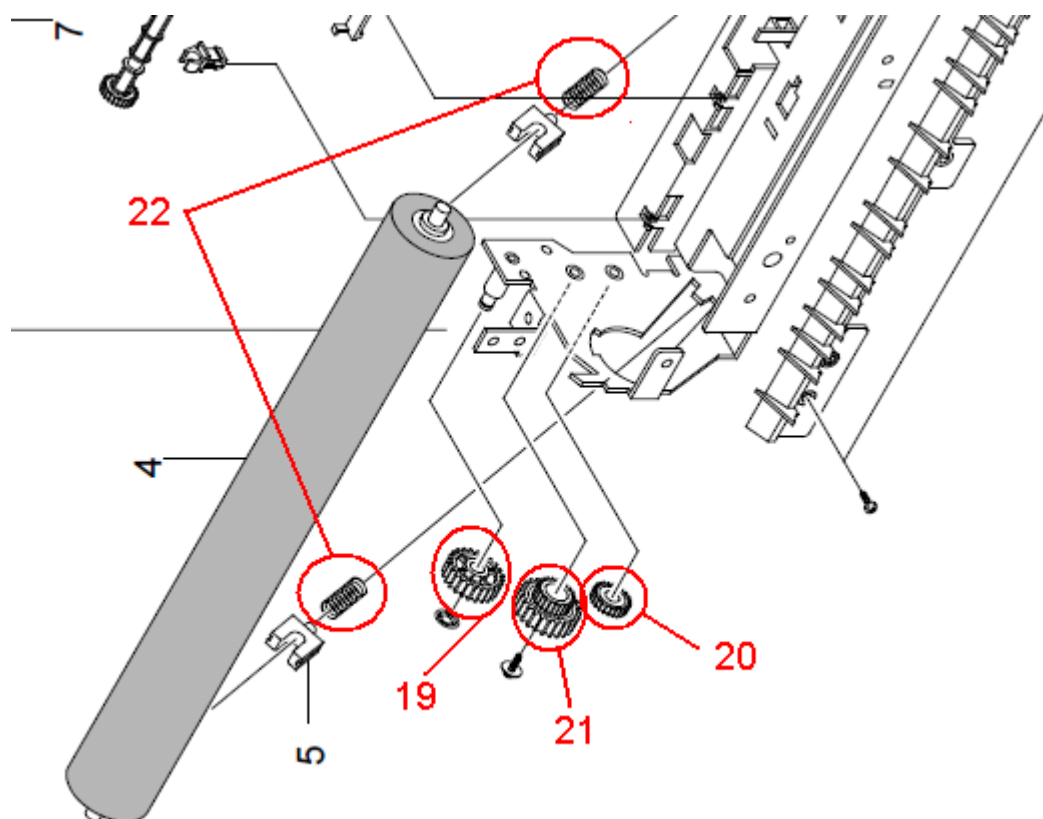
Requests from the field.

New Part #	Description	Q'ty	Page	Index	Note
G9601101	IDEAL GEAR MA ASS'Y (RoHs)	1	17	19	
B1739804	GEAR DRIVE16	1	17	20	
G1449609	GEAR 25/15	1	17	21	
G1449729	SPRING - BEARING	2	17	22	

### 8.FUSING UNIT ASSEMBLY (B273)









Model: CM-C1		Date: 06-Sept-10	No.: RB273013
Subject: Parts Catalog correction		Prepared by: K. Nakano	
From: 2nd Overseas Tech Support Sec. 2nd PQM Dept			
Classification:	<input type="checkbox"/> Troubleshooting <input checked="" type="checkbox"/> Part information <input type="checkbox"/> Action required <input type="checkbox"/> Mechanical <input type="checkbox"/> Electrical <input type="checkbox"/> Service manual revision <input type="checkbox"/> Paper path <input type="checkbox"/> Transmit/receive <input type="checkbox"/> Retrofit information <input type="checkbox"/> Other (      ) <input type="checkbox"/> Tier2		

## Change:

The following parts' descriptions are corrected.

Old / New Part #	G1449705 / G9601032	H9149713 / G9601031
Old Description	Solenoid – Pick Up (RoHs)	Solenoid – Bypass (RoHs)
New Description	Solenoid – Bypass (RoHs)	Solenoid – Pick Up (RoHs)
Int.	O/O	O/O
Page	15	15
Index	29	30
Part's image		
Note	Yellow wire is attached	

## Reason:

The parts' descriptions and the parts' actual functions do not match each other.