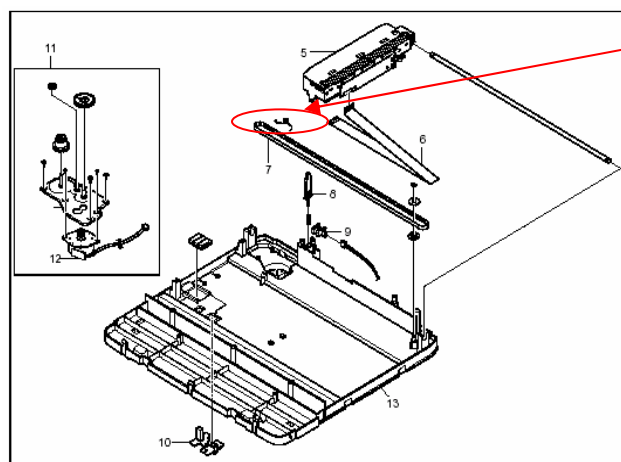
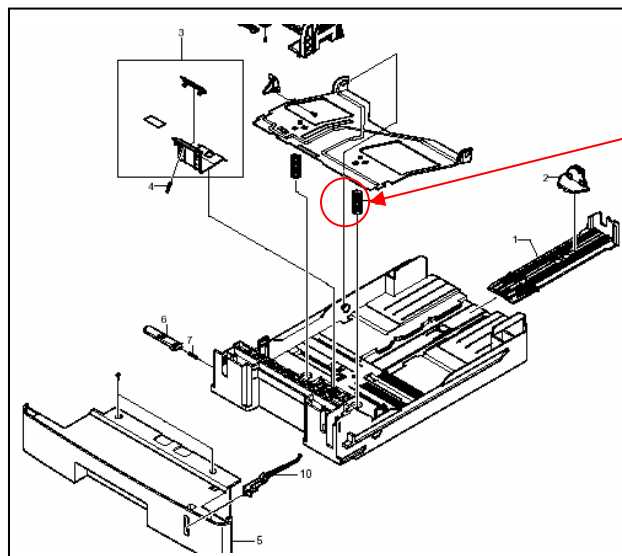


Model: Model CM-C1L (ASIA)		Date: 5-Mar-07	No.: MB273001RA
Modified Article: New parts were added		Prepared by: Y.Yoshida	
From: 1st Tech. Support Sec. Service Support Dept.			
Reason for Modification:	<input checked="" type="checkbox"/> Parts catalog correction <input type="checkbox"/> Vendor change <input type="checkbox"/> Other <input type="checkbox"/> To facilitate assembly <input type="checkbox"/> To improve reliability <input type="checkbox"/> To meet standards <input type="checkbox"/> Part standardization <input type="checkbox"/> Product Safety ()		

Change: These parts were added.

Reason: Requests from the field.

NEW Part	Description	Q'ty	Int	Page	Index	Note
B2737506	Sprig - Cassette	0→1	1	9-23	11	
B1749544	Spring-Scanner belt	0→1	1	4-11	15	



Model: Campari-C1L(ASIA)		Date: 30-Oct-07	No.: MB273002RA
Modified Article: Main Board (B273-ASIA)		Prepared by: Yuji Mimura	
From: 1st Tech. Support Sec. Service Support Dept.			
Reason for Modification:	<input checked="" type="checkbox"/> Parts catalog correction <input type="checkbox"/> Vendor change <input type="checkbox"/> Other <input type="checkbox"/> To facilitate assembly <input type="checkbox"/> To improve reliability <input type="checkbox"/> To meet standards <input type="checkbox"/> Part standardization <input type="checkbox"/> Product Safety ()		

Change/Reason: This part was added.

Old part number	New part number	Description	Q'ty	Int	Page	Index	Note
--	G959 7500	MAIN BOARD (B273-ASIA)	1		2	3	

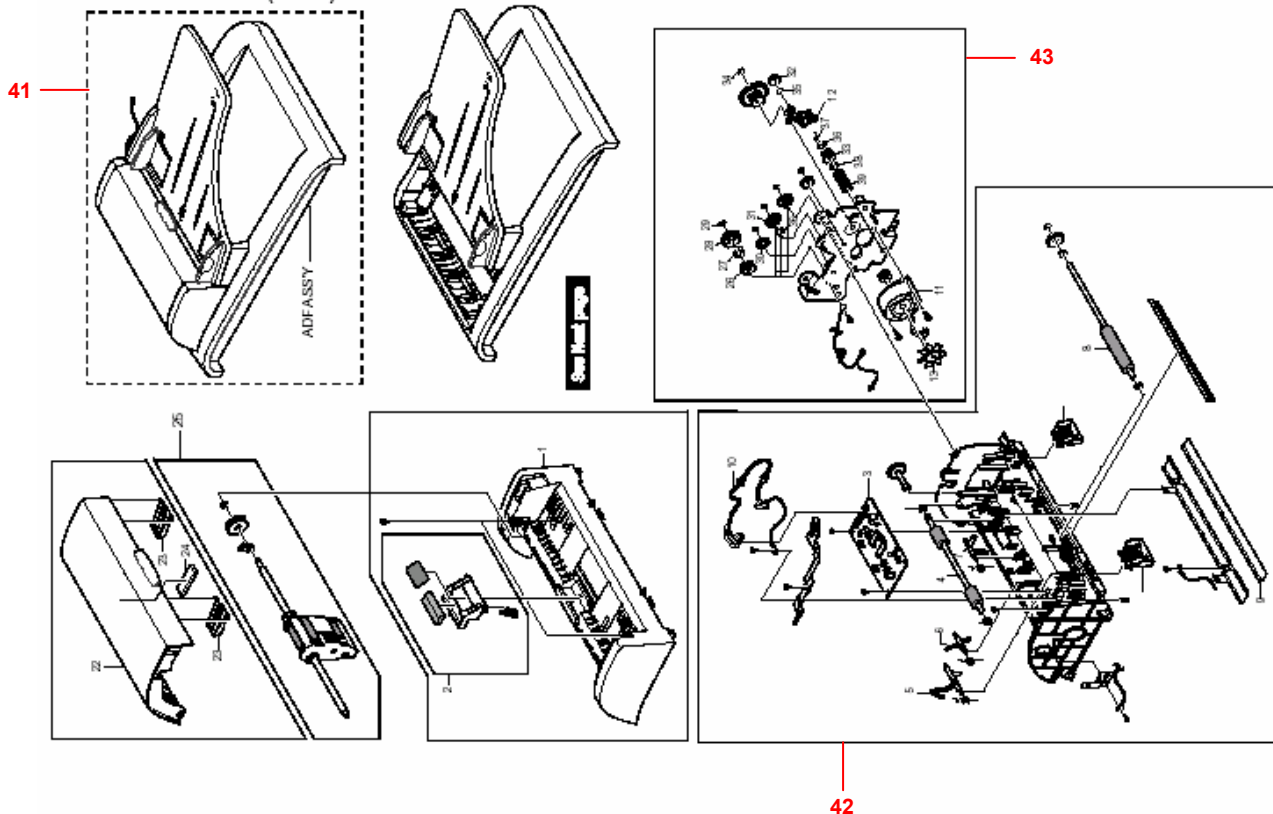
Model: Campari-C1L(ASIA)		Date: 27-Nov-07	No.: MB273003_RA
Modified Article: ADF ASSEMBLY PARTS		Prepared by: T. Shintani	
From: 1st Tech. Support Sec. Service Support Dept.			
Reason for Modification:	<input checked="" type="checkbox"/> Parts catalog correction <input type="checkbox"/> Vendor change <input type="checkbox"/> Other <input type="checkbox"/> To facilitate assembly <input type="checkbox"/> To improve reliability <input type="checkbox"/> To meet standards <input type="checkbox"/> Part standardization <input type="checkbox"/> Product Safety ()		

Change: These parts were added.

Reason: Requests from the field.

NEW Part	Description	Q'ty	Int	Page	Index	Note
B2737507	ADF ASSY	0→1	1	3-8	41	
B2737508	ADF LOWER ASSY	0→1	1	3-8	42	
B2737509	ADF GEAR ASSY	0→1	1	3-8	43	

3.ADF ASSEMBLY (B273)



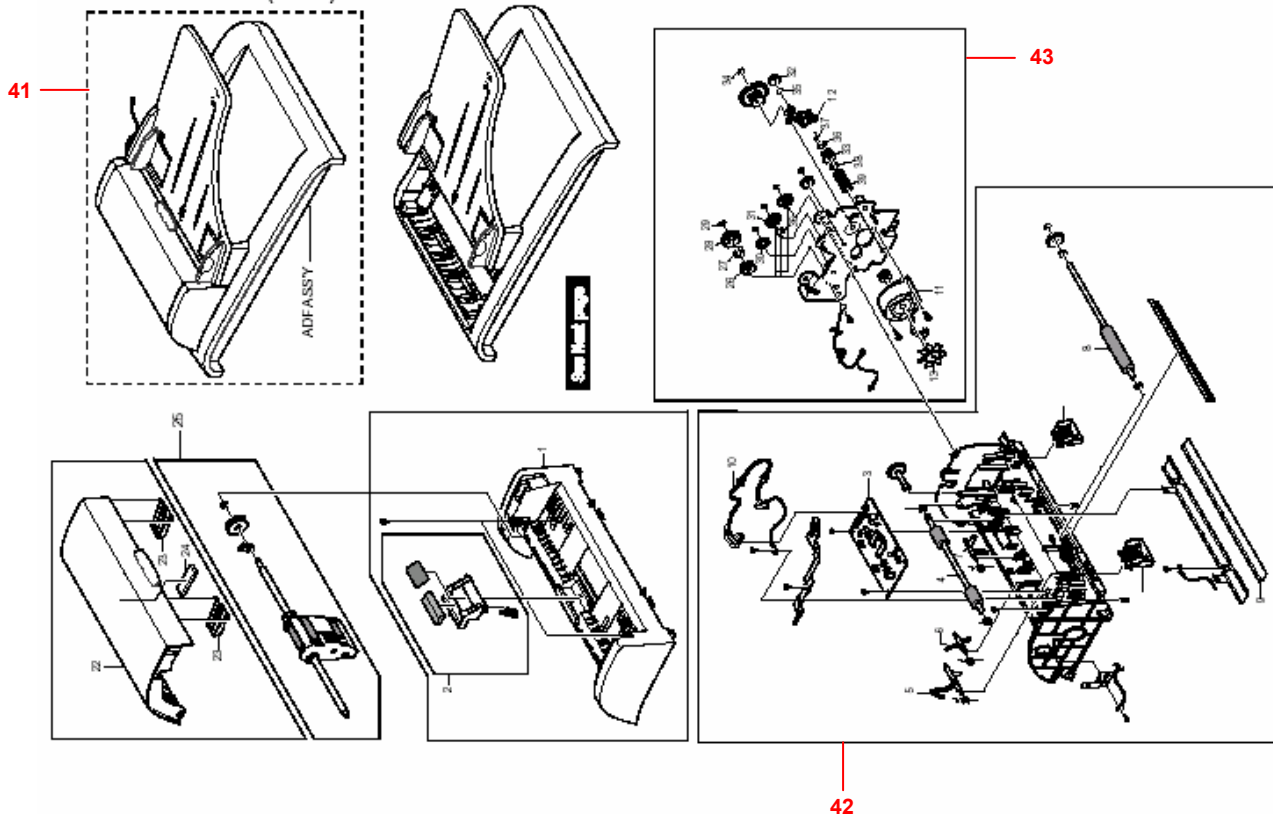
Model: Campari-C1L(ASIA)		Date: 27-Nov-07	No.: MB273004_RA
Modified Article: ADF ASSEMBLY PARTS		Prepared by: T. Shintani	
From: 1st Tech. Support Sec. Service Support Dept.			
Reason for Modification:	<input checked="" type="checkbox"/> Parts catalog correction <input type="checkbox"/> Vendor change <input type="checkbox"/> Other <input type="checkbox"/> To facilitate assembly <input type="checkbox"/> To improve reliability <input type="checkbox"/> To meet standards <input type="checkbox"/> Part standardization <input type="checkbox"/> Product Safety ()		

Change: These parts were added.

Reason: Requests from the field.

NEW Part	Description	Q'ty	Int	Page	Index	Note
B2737507	ADF ASSY	0→1	1	3-8	41	
B2737508	ADF LOWER ASSY	0→1	1	3-8	42	
B2737509	ADF GEAR ASSY	0→1	1	3-8	43	

3.ADF ASSEMBLY (B273)



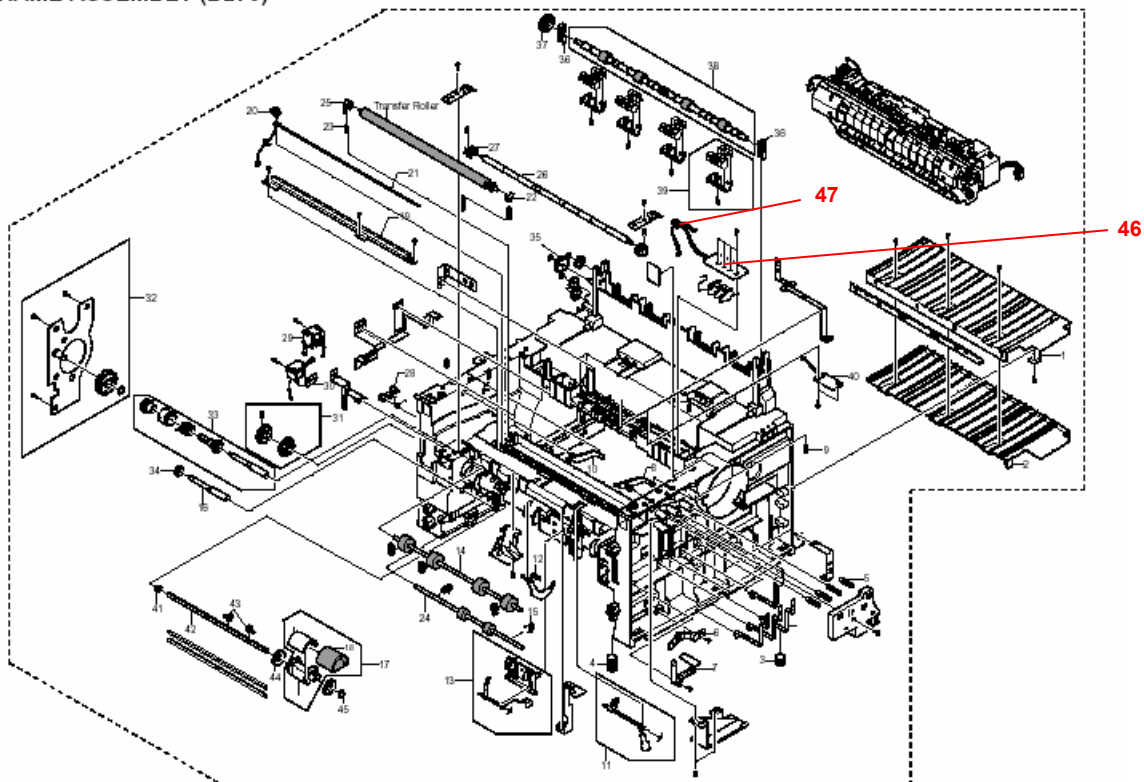
Model: Campari-C1L(ASIA)		Date: 27-Nov-07	No.: MB273005_RA
Modified Article: ADF ASSEMBLY PARTS		Prepared by: T. Shintani	
From: 1st Tech. Support Sec. Service Support Dept.			
Reason for Modification:	<input checked="" type="checkbox"/> Parts catalog correction <input type="checkbox"/> Vendor change <input type="checkbox"/> Other <input type="checkbox"/> To facilitate assembly <input type="checkbox"/> To improve reliability <input type="checkbox"/> To meet standards <input type="checkbox"/> Part standardization <input type="checkbox"/> Product Safety ()		

Change: These parts were added.

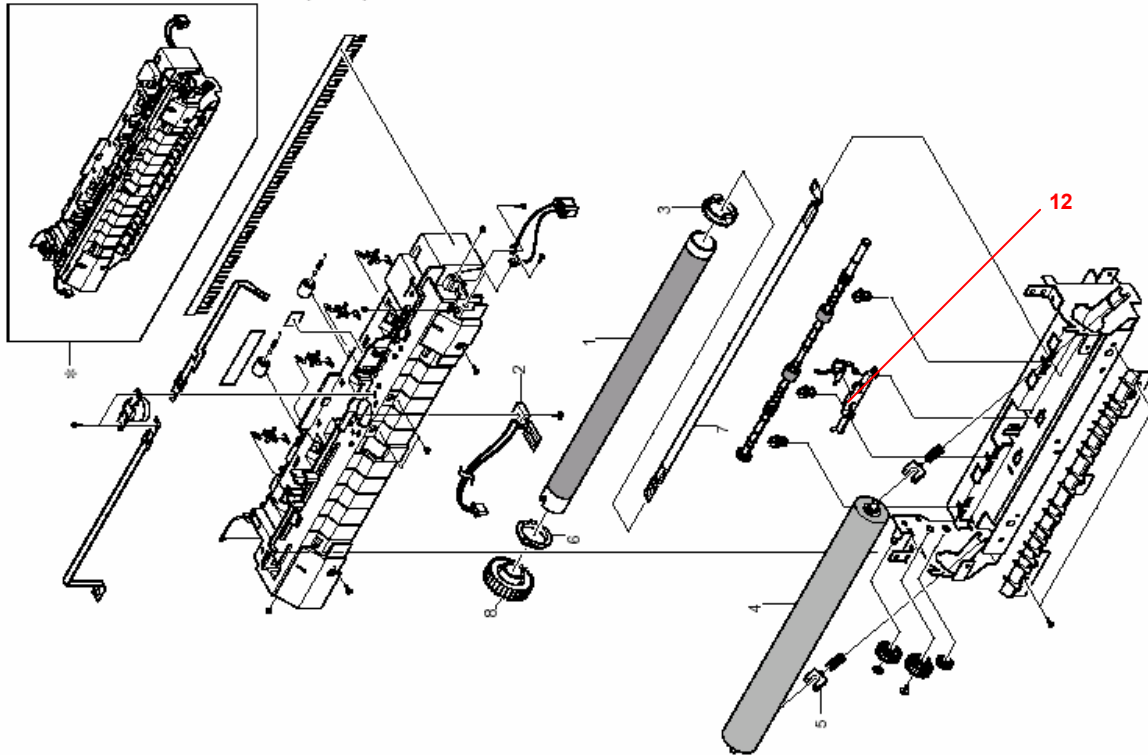
Reason: Requests from the field.

NEW Part	Description	Q'ty	Int	Page	Index	Note
B2737510	PBA-SUB	0→1	1	14	46	
B2737511	HARNESS PBA-SUB	0→1	1	14	47	
B2737512	HOLDER-ACTUATOR	0→1	1	16	12	

7.FRAME ASSEMBLY (B273)



8.FUSING UNIT ASSEMBLY (B273)



Model: Campari-C1L(ASIA)	Date: 27-Nov-07	No.: MB273006_RA
--------------------------	-----------------	------------------

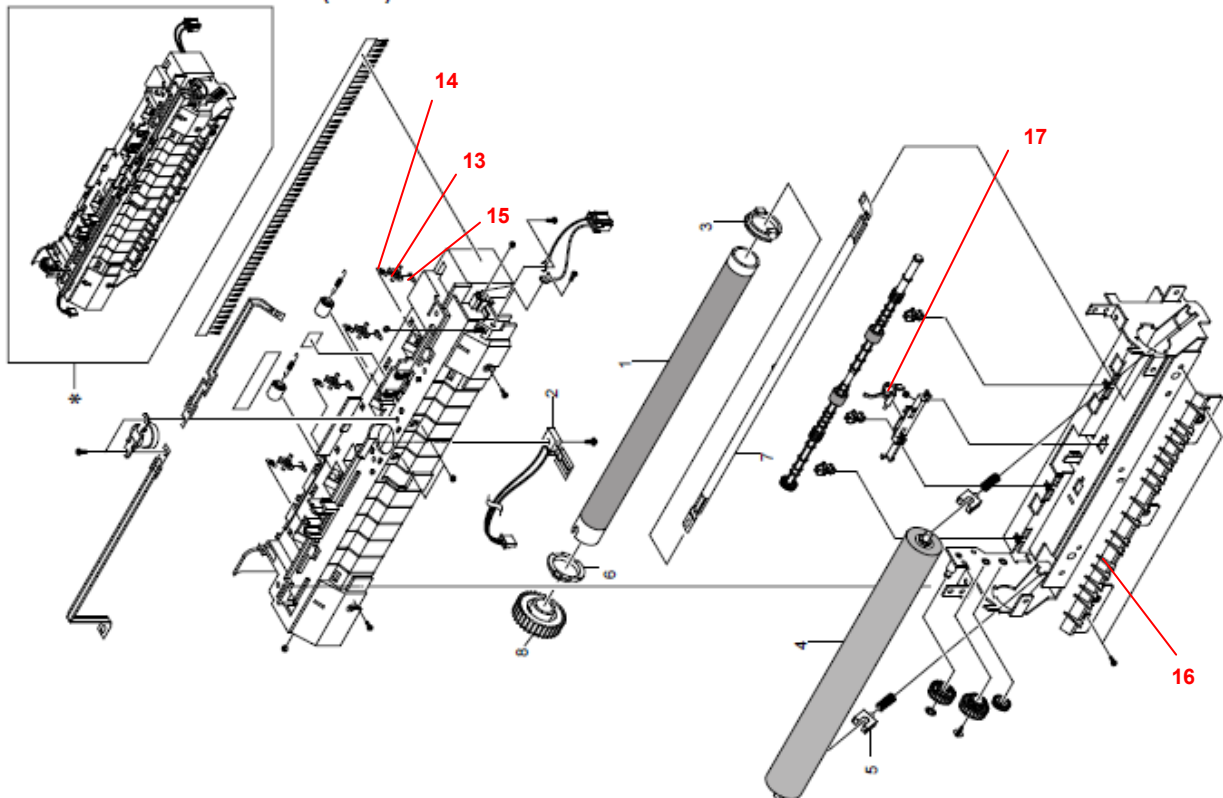
Modified Article: Parts in Fusing unit	Prepared by: T. Shintani
From: 1st Tech. Support Sec. Service Support Dept.	
Reason for Modification:	<input checked="" type="checkbox"/> Parts catalog correction <input type="checkbox"/> Vendor change <input type="checkbox"/> Other <input type="checkbox"/> To facilitate assembly <input type="checkbox"/> To improve reliability <input type="checkbox"/> To meet standards <input type="checkbox"/> Part standardization <input type="checkbox"/> Product Safety ()

Change: These parts were added.

Reason: Requests from the field.

NEW Part	Description	Q'ty	Int	Page	Index	Note
B2739800	Stripper Pole - Fusing unit	0→1	1	16	13	
B2739801	Spring - Stripper pole	0→1	1	16	14	
B2739802	Plate - Stripper pole	0→1	1	16	15	
B2739803	Guide Plate - fusing	0→1	1	16	16	
B2739804	Actuator - Fusing	0→1	1	16	17	

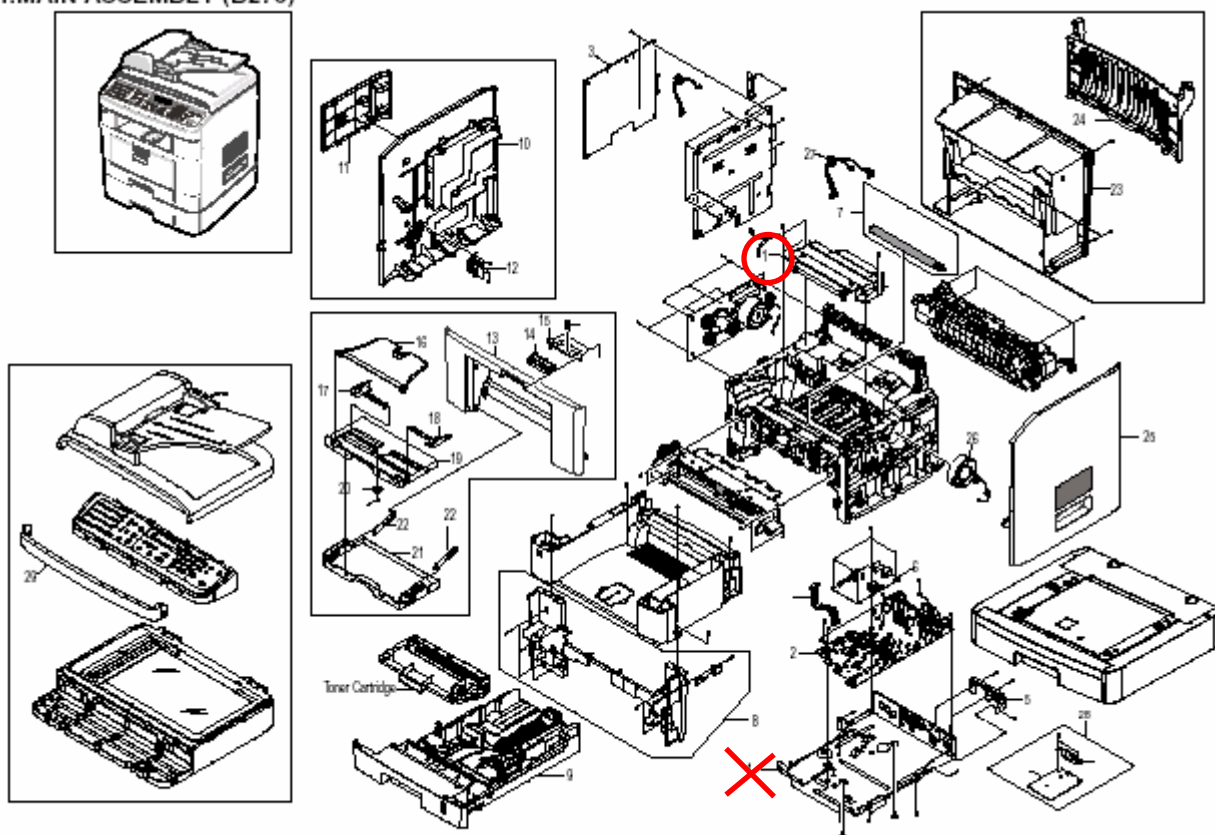
8.FUSING UNIT ASSEMBLY (B273)



Model: Model CM-C1L(ASIA)		Date: 3-Apr-08	No.: MB273007RA
Modified Article: PART CATALOG CORRECTION		Prepared by: T. Shintani	
From: 1st Tech. Support Sec. Service Support Dept.			
Reason for Modification:	<input checked="" type="checkbox"/> Parts catalog correction	<input type="checkbox"/> Vendor change	<input type="checkbox"/> Other
	<input type="checkbox"/> To facilitate assembly	<input type="checkbox"/> To improve reliability	<input type="checkbox"/> To meet standards
	<input type="checkbox"/> Part standardization	<input type="checkbox"/> Product Safety	()

Change/Reason: The illustration below was corrected (callout #1 marked with an "X" was deleted).

1.MAIN ASSEMBLY (B273)



Model: Model CM-C1L(ASIA)		Date: 3-Apr-08	No.: MB273008RA
Modified Article: Antistatic Brush		Prepared by: T. Shintani	
From: 1st Tech. Support Sec. Service Support Dept.			
Reason for Modification:	<input checked="" type="checkbox"/> Parts catalog correction <input type="checkbox"/> Vendor change <input type="checkbox"/> Other <input type="checkbox"/> To facilitate assembly <input type="checkbox"/> To improve reliability <input type="checkbox"/> To meet standards <input type="checkbox"/> Part standardization <input type="checkbox"/> Product Safety ()		

Model CM-C1

NEW Part	Description	Q'ty	Int	Page	Index	Note
G1861344	Antistatic Brush	0→1	-	19	14	-

Model CM-C1L/Model CM-C1L(ASIA)

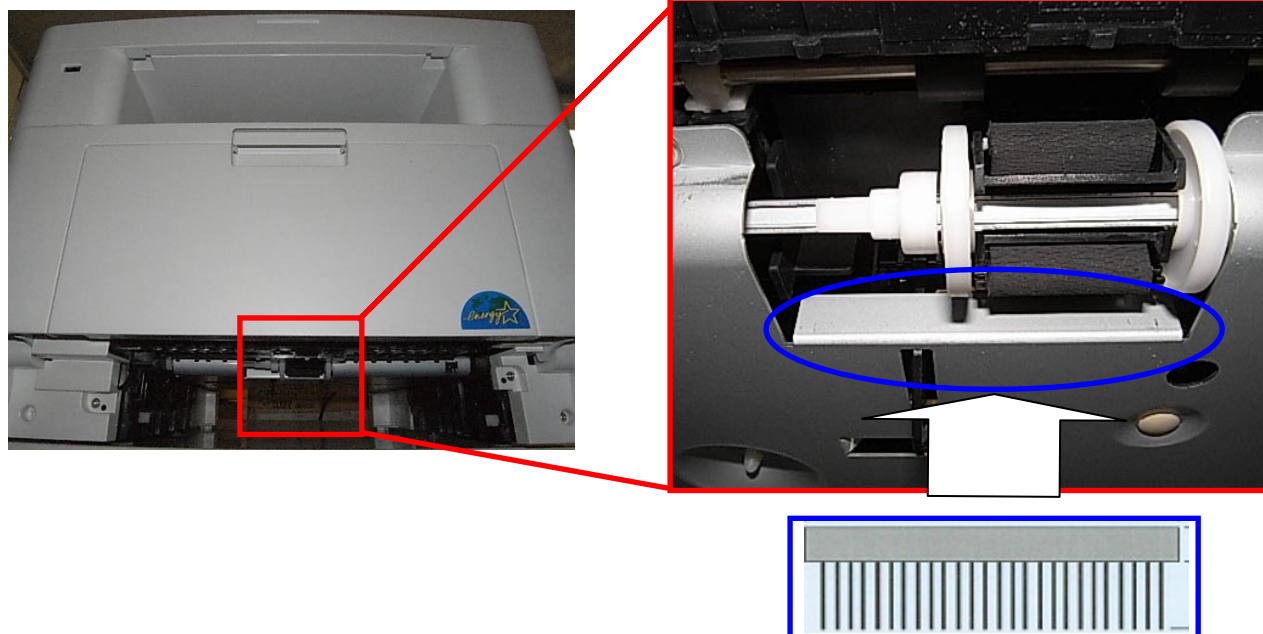
NEW Part	Description	Q'ty	Int	Page	Index	Note
G1861344	Antistatic Brush	0→1	-	19	14	-

Change: An anti-static brush was added.

Reason: To minimize the effect of electrical noise on the fusing unit.

Note: This brush reduces electrostatic buildup on the paper during paper feed.

Attachment position:



Model: Model CM-C1L(ASIA)		Date: 3-Apr-08	No.: MB273009RA
Modified Article: PART CATALOG CORRECTION		Prepared by: T. Shintani	
From: 1st Tech. Support Sec. Service Support Dept.			
Reason for Modification:	<input checked="" type="checkbox"/> Parts catalog correction <input type="checkbox"/> Vendor change <input type="checkbox"/> Other <input type="checkbox"/> To facilitate assembly <input type="checkbox"/> To improve reliability <input type="checkbox"/> To meet standards <input type="checkbox"/> Part standardization <input type="checkbox"/> Product Safety ()		

Old Part Number	New Part Number	Description	Q'ty	Page	Index
B2737506	G9601016	SPRNG - CASSETTE	2	23	11
B2739545	G9601174	EXIT ROLLER	1	16	39
B2739555	G9601194	PRESSURE SPRNG	1	23	7
B2739556	G9601127	LEFT SIDE FENCE	1	23	8
B2739557	G9601128	RIGHT SIDE FENCE	1	23	9
B2739563	G9601083	SUB TRAY	1	3	19
B2739564	G9601196	PNION GEAR	1	3	20
B2739576	G9601200	WASHER	1	16	36
B2739578	G9601010	E-RNG	1	16	37
B2739664	G9601095	KNOB - FRONT COVER	1	3	14
B2739665	G9601075	LOCK KNOB HOLDER	1	3	15
B2739676	G9601110	ADFDRIVE ROLLER	1	8	4
B2739677	G9601147	SENSOR ACTUATOR	1	8	5
B2739678	G9601145	SENSOR ACTUATOR	1	8	6
B2739679	G9601146	SENSOR ACTUATOR	1	8	7
B2739680	G9601109	ADF EXIT ROLLER	1	8	8
B2739681	G9601134	WHITE SHEET	1	8	9
B2739683	G9601028	STEPPNG MOTOR - DC 5.2W	1	8	11
B2739685	G9601319	MPPELLER-ADF	1	8	13
B2739691	G9601197	PNCH ROLLER	1	8	19
B2739701	G9601025	PLATEN GLASS	1	12	2
B2739703	G9601021	HOLDER - PLATEN GLASS	1	12	4
B2739706	G9601018	TMNG BELT	1	12	7
B2739707	G9601135	SENSOR LEVER	1	12	8
B2739710	G9601162	SCANNER MOTOR - DC 18W	1	12	11
B2739711	G9601205	STEPPNG MOTOR - DC 18W	1	12	12
B2739715	G9601157	PCB - USB HOST	1	14	5
B2739719	G9601176	SPRNG CLUTCH	1	16	33
B2739728	G9601180	PICK-UP ROLLER	1	21	3
B2739729	G9601357	PCH-UP ROLLER SPONGE	1	21	4

Change/Reason: Parts standardization with Model CM-C2.

Model: Model CM-C1L (ASIA)		Date: 21-Apr-08	No.: MB273010RA
Modified Article: PART CATALOG CORRECTION		Prepared by: T. Shintani	
From: 1st Tech. Support Sec. Service Support Dept.			
Reason for Modification:	<input checked="" type="checkbox"/> Parts catalog correction <input type="checkbox"/> Vendor change <input type="checkbox"/> Other <input type="checkbox"/> To facilitate assembly <input type="checkbox"/> To improve reliability <input type="checkbox"/> To meet standards <input type="checkbox"/> Part standardization <input type="checkbox"/> Product Safety ()		

OLD Part Number	NEW Part Number	DESCRIPTION	Q'TY	PAGE	INDEX
G1449664	G9601084	EXTENSION - BYPASS	1	3	16
G1449667	G9601083	DOCUMENT FEEDER	1	3	19
G1449668	G9601196	GEAR - DOCUMENT	1	3	20
G1449670	G9601082	TRAY LINE - BYPASS	1	3	22
G1449687	G9601062	TRANSFER GUIDE UP	1	15	1
G1449690	G9601155	MFC TERMINAL	1	15	5
G1449691	G9601143	PLATE GUIDE RIGHT	1	15	8
G1449692	G9601079	SPRING - GUIDE	1	15	9
G1449693	G9601142	PLATE GUIDE LEFT	1	15	10
G1449696	G9601107	FEED ROLLER	1	15	14
G1449697	G9601133	BUSHING - FEED	1	15	15
G1449699	G9601129	EARTH - TRANSFER	1	15	19
G1449700	G9601069	HOLDER - QUENCHIN	1	15	20
G1449701	G9601055	SPRING - TRANSFER	1	15	23
G1449702	G9601060	BUSHING - TRANSFER	1	15	25
G1449703	G9601058	BUSHING - IDLE	1	15	27
G1449704	G9601099	CAM - PICKUP	1	15	28
G1449705	G9601032	SOLENOID - PICKUP	1	15	29
G1449710	G9601140	IDLE - PICKUP	1	15	44
G1449711	G9601066	BEARING - EXIT	1	15	36
G1449712	G9601097	GEAR - EXIT ROLLER	1	15	37
G1449713	G9601174	RACK - EXIT ROLLER	1	15	39
G1449715	G9601026	COOLING FAN	1	3	26
G1449718	G9601059	BUSHING - MP ASS'Y	1	15	45
G1449719	G9601070	STOPPER PICK - UP	1	15	43
G1449720	G9601072	FRICTION PAD HOLDER	1	19	6
G1449721	G9601101	IDEAL GEAR MA ASS'Y	1	19	7
G1449724	G9601153	FRICTION PAD	1	19	12
G1449740	G9601177	FRICTION PAD ASS'Y	1	21	3
G1449741	G9601078	SPRING - FRICTION	1	21	4
G1449744	G9601067	RUBBER FOOT BACK	1	15	3
G1449748	G9601311	FEED SHAFT	1	15	16
G1449749	G9601102	SHAFT PICK-UP ROLLER	1	15	42
G1449750	G9601141	CASSETTE COCKER	1	15	6

Change/Reason: Parts standardization with Model CM-C2.

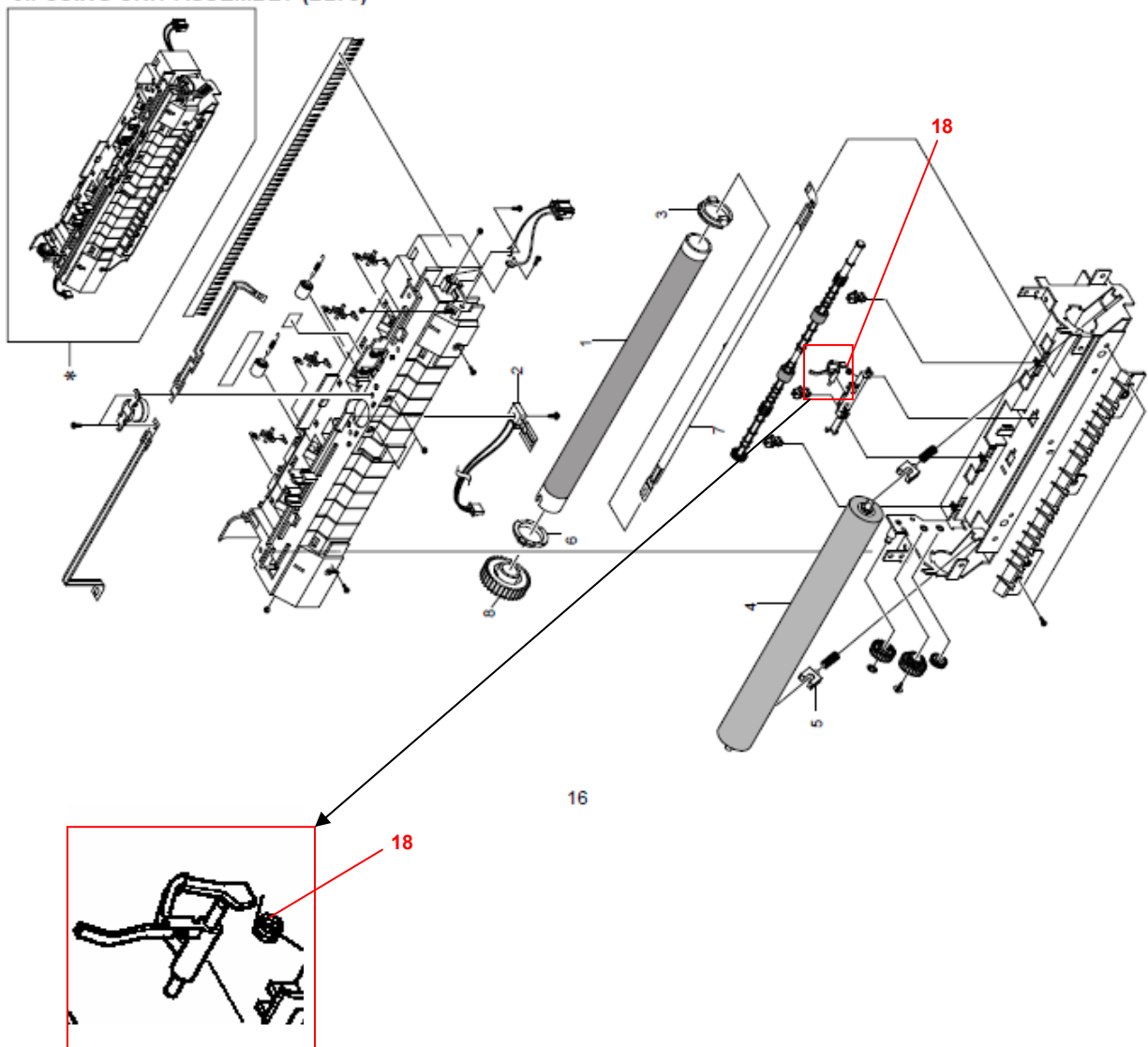
Model: Model CM-C1L(ASIA)		Date: 3-Jun-08	No.: MB273011RA
Modified Article: Parts in Fusing unit		Prepared by: T. Shintani	
From: 1st Tech. Support Sec. Service Support Dept.			
Reason for Modification:	<input checked="" type="checkbox"/> Parts catalog correction <input type="checkbox"/> Vendor change <input type="checkbox"/> Other <input type="checkbox"/> To facilitate assembly <input type="checkbox"/> To improve reliability <input type="checkbox"/> To meet standards <input type="checkbox"/> Part standardization <input type="checkbox"/> Product Safety ()		

Change: This part was added.

Reason: Requests from the field.

NEW Part	Description	Q'ty	Int	Page	Index	Note
B1739694	SPRING-TS	0→1	-	17	18	-
B2739808	Sheet-Copy (English)	0→1	-	9	4	-
B2739807	Sheet-Start (English)	0→1	-	9	5	-
B2739806	Sheet-Tel (English)	0→1	-	9	6	-
B2739809	Sheet-Fax (English)	0→1	-	9	7	-

8.FUSING UNIT ASSEMBLY (B273)



Model: Model CM-C1L(ASIA)

Date: 3-Jun-08

No.: MB273011RA

4.OPE ASSEMBLY (B273)

