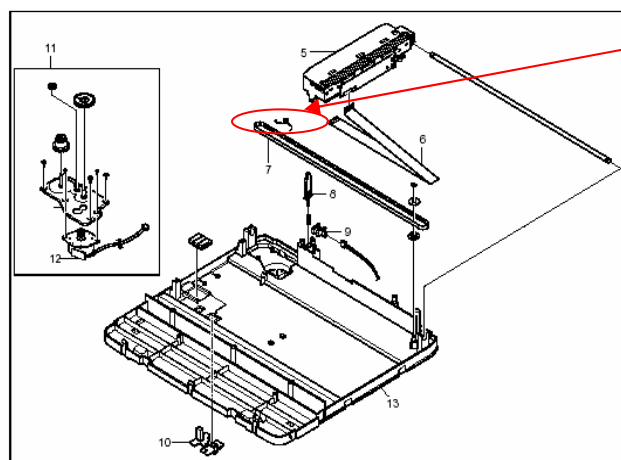
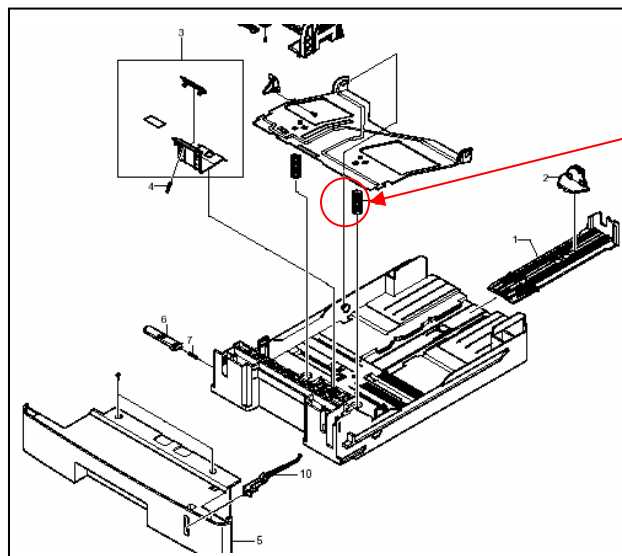


Model: Model CM-C1L (EXP)		Date: 5-Mar-07	No.: MG959001
Modified Article: New parts were added		Prepared by: Y.Yoshida	
From: 1st Tech. Support Sec. Service Support Dept.			
Reason for Modification:	<input checked="" type="checkbox"/> Parts catalog correction <input type="checkbox"/> Vendor change <input type="checkbox"/> Other <input type="checkbox"/> To facilitate assembly <input type="checkbox"/> To improve reliability <input type="checkbox"/> To meet standards <input type="checkbox"/> Part standardization <input type="checkbox"/> Product Safety ()		

Change: These parts were added.

Reason: Requests from the field.

NEW Part	Description	Q'ty	Int	Page	Index	Note
B2737506	Sprig - Cassette	0→1	1	9-23	11	
B1749544	Spring-Scanner belt	0→1	1	4-11	15	



Model: Campari-C1L(EXP)		Date: 30-Oct-07	No.: MG959002
Modified Article: Main Board (G959)		Prepared by: Yuji Mimura	
From: 1st Tech. Support Sec. Service Support Dept.			
Reason for Modification:	<input checked="" type="checkbox"/> Parts catalog correction <input type="checkbox"/> Vendor change <input type="checkbox"/> Other <input type="checkbox"/> To facilitate assembly <input type="checkbox"/> To improve reliability <input type="checkbox"/> To meet standards <input type="checkbox"/> Part standardization <input type="checkbox"/> Product Safety ()		

Change/Reason: This part was added.

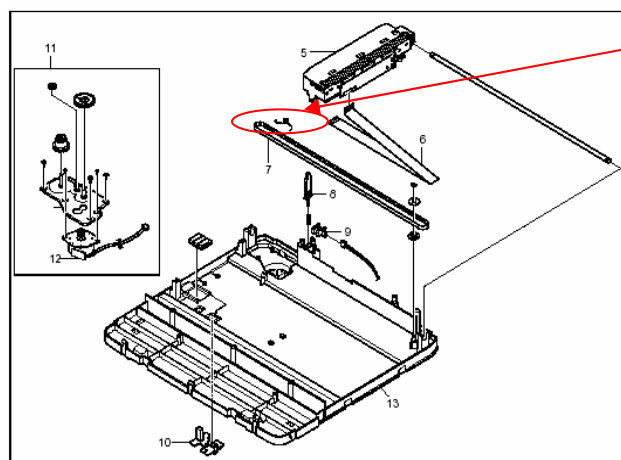
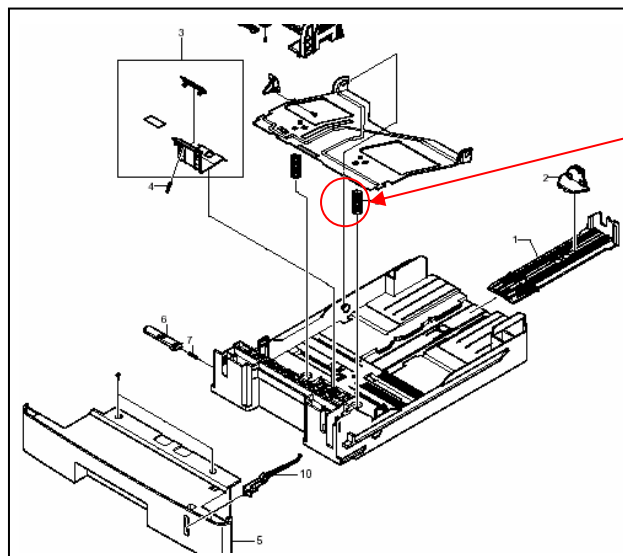
Old part number	New part number	Description	Q'ty	Int	Page	Index	Note
--	G959 7500	MAIN BOARD (G959)	1		2	3	

Model: Campari-C1L(EXP)		Date: 27-Nov-07	No.: MG959003
Modified Article: New parts were added		Prepared by: T. Shintani	
From: 1st Tech. Support Sec. Service Support Dept.			
Reason for Modification:	<input checked="" type="checkbox"/> Parts catalog correction <input type="checkbox"/> Vendor change <input type="checkbox"/> Other <input type="checkbox"/> To facilitate assembly <input type="checkbox"/> To improve reliability <input type="checkbox"/> To meet standards <input type="checkbox"/> Part standardization <input type="checkbox"/> Product Safety ()		

Change: These parts were added.

Reason: Requests from the field.

NEW Part	Description	Q'ty	Int	Page	Index	Note
B2737506	Sprig - Cassette	0→1	1	9-23	11	
B1749544	Spring-Scanner belt	0→1	1	4-11	15	



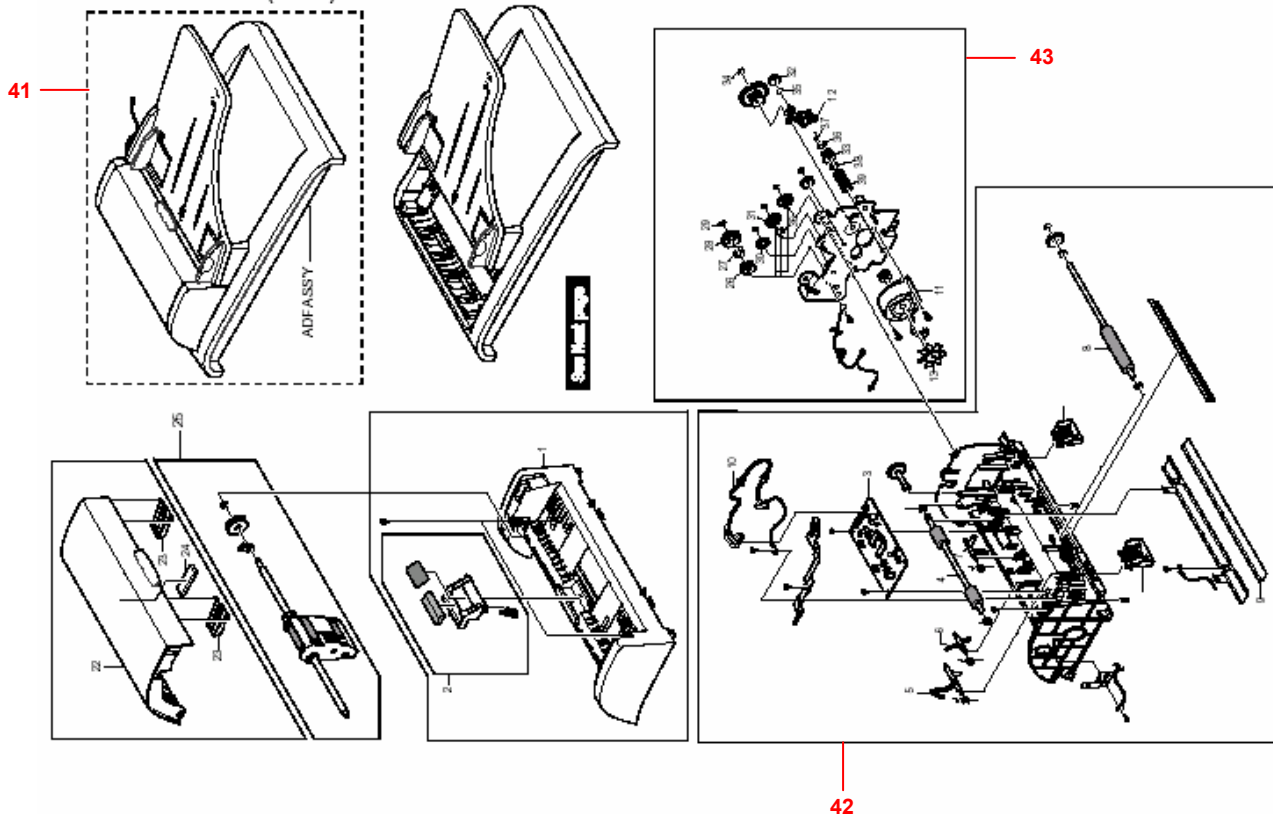
Model: Campari-C1L(EXP)		Date: 27-Nov-07	No.: MG959004
Modified Article: ADF ASSEMBLY PARTS		Prepared by: T. Shintani	
From: 1st Tech. Support Sec. Service Support Dept.			
Reason for Modification:	<input checked="" type="checkbox"/> Parts catalog correction <input type="checkbox"/> Vendor change <input type="checkbox"/> Other <input type="checkbox"/> To facilitate assembly <input type="checkbox"/> To improve reliability <input type="checkbox"/> To meet standards <input type="checkbox"/> Part standardization <input type="checkbox"/> Product Safety ()		

Change: These parts were added.

Reason: Requests from the field.

NEW Part	Description	Q'ty	Int	Page	Index	Note
B2737507	ADF ASSY	0→1	1	3-8	41	
B2737508	ADF LOWER ASSY	0→1	1	3-8	42	
B2737509	ADF GEAR ASSY	0→1	1	3-8	43	

3.ADF ASSEMBLY (B273)



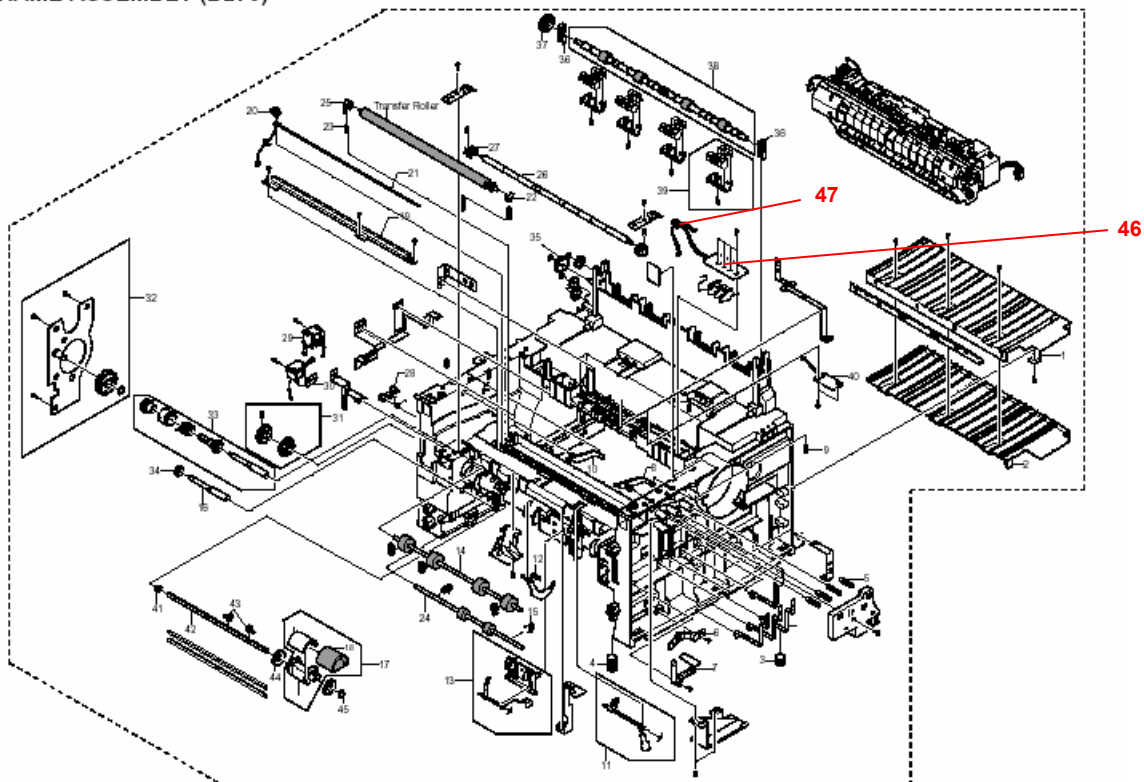
Model: Campari-C1L(EXP)		Date: 27-Nov-07	No.: MG959005
Modified Article: ADF ASSEMBLY PARTS		Prepared by: T. Shintani	
From: 1st Tech. Support Sec. Service Support Dept.			
Reason for Modification:	<input checked="" type="checkbox"/> Parts catalog correction <input type="checkbox"/> Vendor change <input type="checkbox"/> Other <input type="checkbox"/> To facilitate assembly <input type="checkbox"/> To improve reliability <input type="checkbox"/> To meet standards <input type="checkbox"/> Part standardization <input type="checkbox"/> Product Safety ()		

Change: These parts were added.

Reason: Requests from the field.

NEW Part	Description	Q'ty	Int	Page	Index	Note
B2737510	PBA-SUB	0→1	1	14	46	
B2737511	HARNESS PBA-SUB	0→1	1	14	47	
B2737512	HOLDER-ACTUATOR	0→1	1	16	12	

7.FRAME ASSEMBLY (B273)

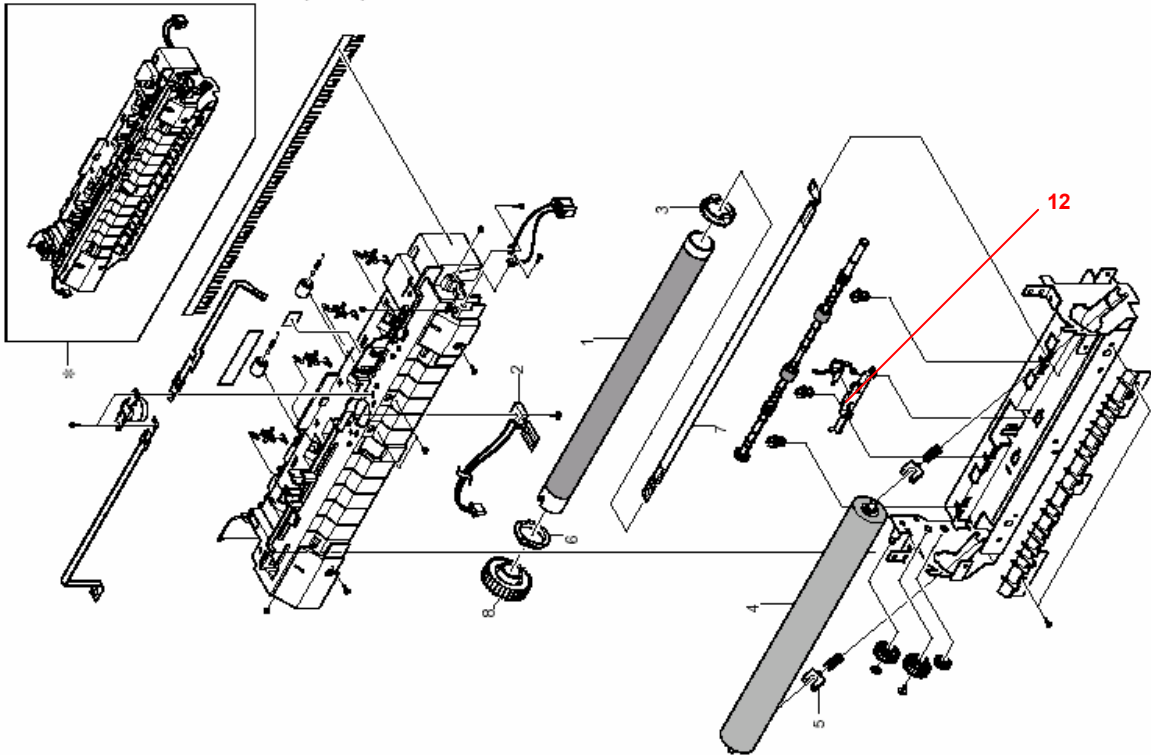


Model: Campari-C1L(EXP)

Date: 27-Nov-07

No.: MG959005

8.FUSING UNIT ASSEMBLY (B273)



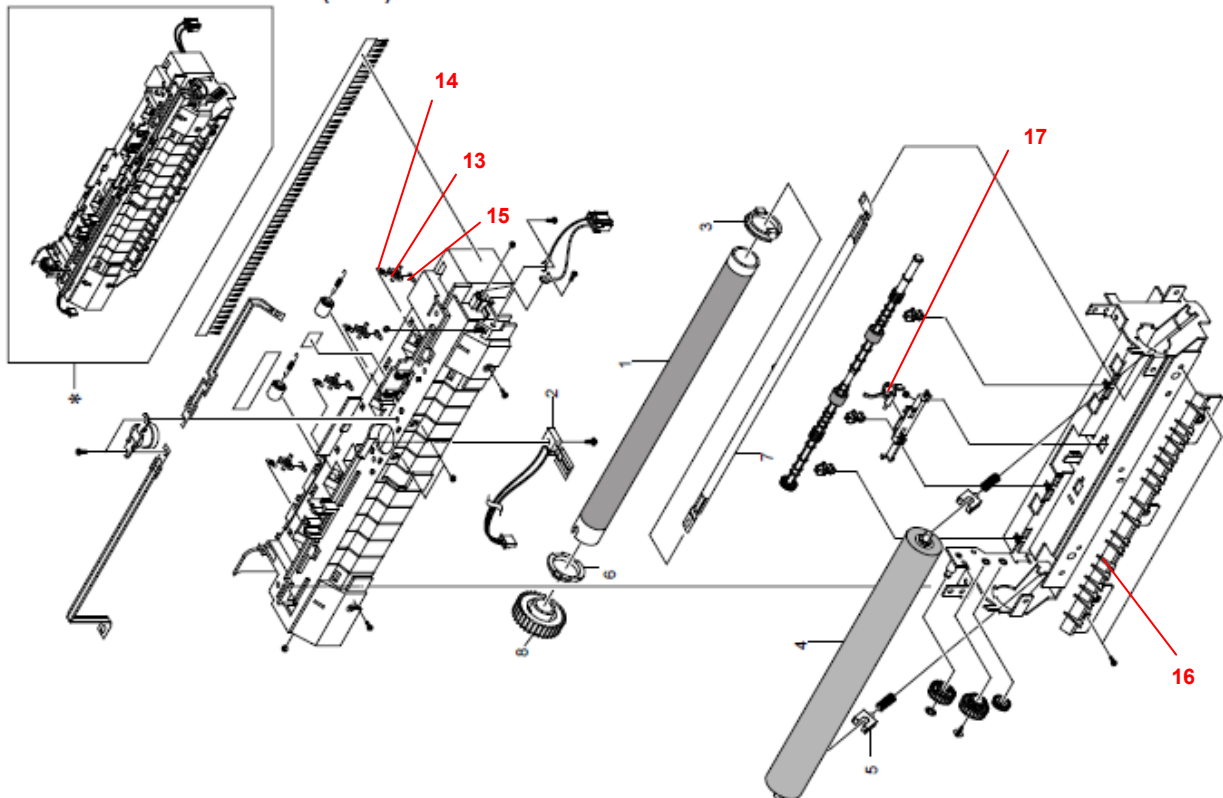
Model: Campari-C1L(EXP)		Date: 27-Nov-07	No.: MG959006
Modified Article: Parts in Fusing unit		Prepared by: T. Shintani	
From: 1st Tech. Support Sec. Service Support Dept.			
Reason for Modification:	<input checked="" type="checkbox"/> Parts catalog correction <input type="checkbox"/> Vendor change <input type="checkbox"/> Other <input type="checkbox"/> To facilitate assembly <input type="checkbox"/> To improve reliability <input type="checkbox"/> To meet standards <input type="checkbox"/> Part standardization <input type="checkbox"/> Product Safety ()		

Change: These parts were added.

Reason: Requests from the field.

NEW Part	Description	Q'ty	Int	Page	Index	Note
B2739800	Stripper Pole - Fusing unit	0→1	1	16	13	
B2739801	Spring - Stripper pole	0→1	1	16	14	
B2739802	Plate - Stripper pole	0→1	1	16	15	
B2739803	Guide Plate - fusing	0→1	1	16	16	
B2739804	Actuator - Fusing	0→1	1	16	17	

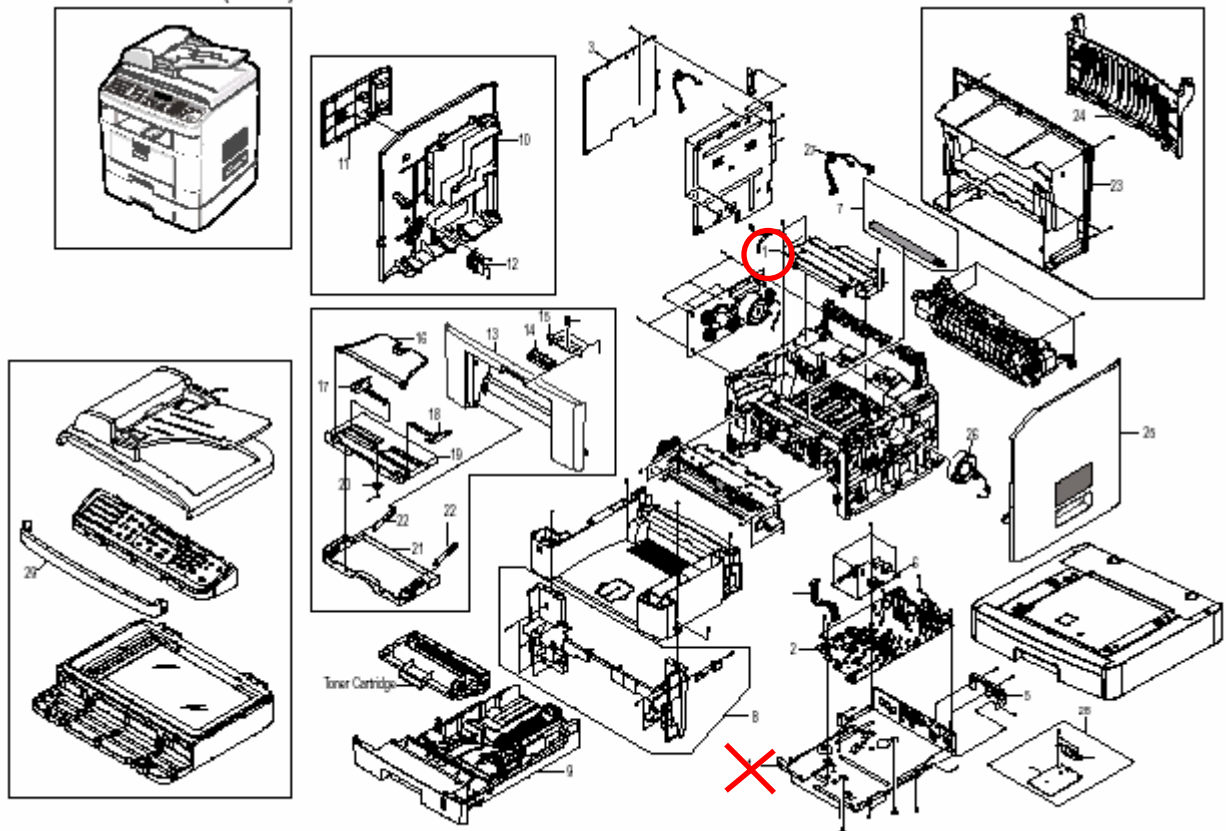
8.FUSING UNIT ASSEMBLY (B273)



Model: Model CM-C1L		Date: 3-Apr-08	No.: MG959007
Modified Article: PART CATALOG CORRECTION		Prepared by: T. Shintani	
From: 1st Tech. Support Sec. Service Support Dept.			
Reason for Modification:	<input checked="" type="checkbox"/> Parts catalog correction <input type="checkbox"/> Vendor change <input type="checkbox"/> Other <input type="checkbox"/> To facilitate assembly <input type="checkbox"/> To improve reliability <input type="checkbox"/> To meet standards <input type="checkbox"/> Part standardization <input type="checkbox"/> Product Safety ()		

Change/Reason: The illustration below was corrected (callout #1 marked with an "X" was deleted).

1.MAIN ASSEMBLY (B273)



Model: Model CM-C1/ Model CM-C1L		Date: 3-Apr-08	No.: MG959008
Modified Article: Antistatic Brush		Prepared by: T. Shintani	
From: 1st Tech. Support Sec. Service Support Dept.			
Reason for Modification:	<input checked="" type="checkbox"/> Parts catalog correction <input type="checkbox"/> Vendor change <input type="checkbox"/> Other <input type="checkbox"/> To facilitate assembly <input type="checkbox"/> To improve reliability <input type="checkbox"/> To meet standards <input type="checkbox"/> Part standardization <input type="checkbox"/> Product Safety ()		

Model CM-C1

NEW Part	Description	Q'ty	Int	Page	Index	Note
G1861344	Antistatic Brush	0→1	-	19	14	-

Model CM-C1L

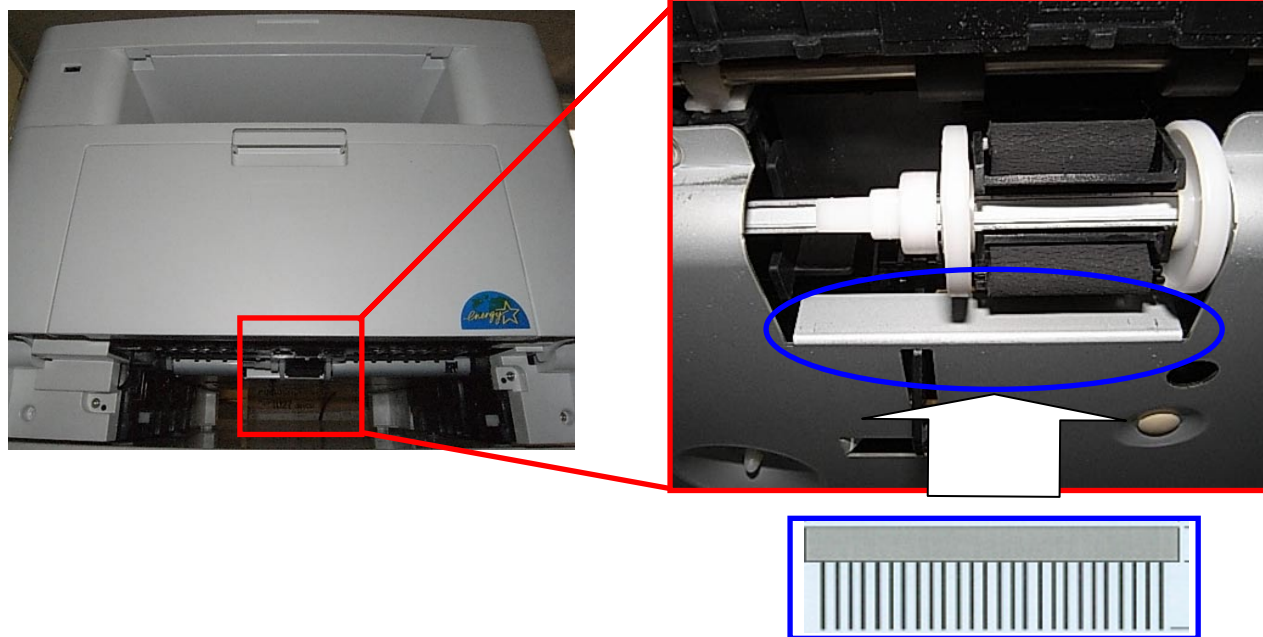
NEW Part	Description	Q'ty	Int	Page	Index	Note
G1861344	Antistatic Brush	0→1	-	19	14	-

Change: An anti-static brush was added.

Reason: To minimize the effect of electrical noise on the fusing unit.

Note: This brush reduces electrostatic buildup on the paper at the time of paper feed.

Attachment position:



Model: Model CM-C1L		Date: 3-Apr-08	No.: MG959009
Modified Article: PART CATALOG CORRECTION		Prepared by: T. Shintani	
From: 1st Tech. Support Sec. Service Support Dept.			
Reason for Modification:	<input checked="" type="checkbox"/> Parts catalog correction <input type="checkbox"/> Vendor change <input type="checkbox"/> Other <input type="checkbox"/> To facilitate assembly <input type="checkbox"/> To improve reliability <input type="checkbox"/> To meet standards <input type="checkbox"/> Part standardization <input type="checkbox"/> Product Safety ()		

Old Part Number	New Part Number	Description	Q'ty	Page	Index
B2737506	G9601016	SPRNG - CASSETTE	2	23	11
B2739545	G9601174	EXIT ROLLER	1	16	39
B2739555	G9601194	PRESSURE SPRNG	1	23	7
B2739556	G9601127	LEFT SIDE FENCE	1	23	8
B2739557	G9601128	RIGHT SIDE FENCE	1	23	9
B2739563	G9601083	SUB TRAY	1	3	19
B2739564	G9601196	PNION GEAR	1	3	20
B2739576	G9601200	WASHER	1	16	36
B2739578	G9601010	E-RNG	1	16	37
B2739664	G9601095	KNOB - FRONT COVER	1	3	14
B2739665	G9601075	LOCK KNOB HOLDER	1	3	15
B2739676	G9601110	ADFDRIVE ROLLER	1	8	4
B2739677	G9601147	SENSOR ACTUATOR	1	8	5
B2739678	G9601145	SENSOR ACTUATOR	1	8	6
B2739679	G9601146	SENSOR ACTUATOR	1	8	7
B2739680	G9601109	ADF EXIT ROLLER	1	8	8
B2739681	G9601134	WHITE SHEET	1	8	9
B2739683	G9601028	STEPPNG MOTOR - DC 5.2W	1	8	11
B2739685	G9601319	MPPELLER-ADF	1	8	13
B2739691	G9601197	PINCH ROLLER	1	8	19
B2739701	G9601025	PLATEN GLASS	1	12	2
B2739703	G9601021	HOLDER - PLATEN GLASS	1	12	4
B2739706	G9601018	TMING BELT	1	12	7
B2739707	G9601135	SENSOR LEVER	1	12	8
B2739710	G9601162	SCANNER MOTOR - DC 18W	1	12	11
B2739711	G9601205	STEPPNG MOTOR - DC 18W	1	12	12
B2739715	G9601157	PCB - USB HOST	1	14	5
B2739719	G9601176	SPRNG CLUTCH	1	16	33
B2739728	G9601180	PICK-UP ROLLER	1	21	3
B2739729	G9601357	PICK-UP ROLLER SPONGE	1	21	4

Change/Reason: Parts standardization with Model CM-C2.

Model: Model CM-C1L		Date: 21-Apr-08	No.: MG959010
Modified Article: PART CATALOG CORRECTION		Prepared by: T. Shintani	
From: 1st Tech. Support Sec. Service Support Dept.			
Reason for Modification:	<input checked="" type="checkbox"/> Parts catalog correction <input type="checkbox"/> Vendor change <input type="checkbox"/> Other <input type="checkbox"/> To facilitate assembly <input type="checkbox"/> To improve reliability <input type="checkbox"/> To meet standards <input type="checkbox"/> Part standardization <input type="checkbox"/> Product Safety ()		

OLD Part Number	NEW Part Number	DESCRIPTION	Q'TY	PAGE	INDEX
G1449664	G9601084	EXTENSION - BYPASS	1	3	16
G1449667	G9601083	DOCUMENT FEEDER	1	3	19
G1449668	G9601196	GEAR - DOCUMENT	1	3	20
G1449670	G9601082	TRAY LINE - BYPASS	1	3	22
G1449687	G9601062	TRANSFER GUIDE UP	1	15	1
G1449690	G9601155	MFC TERMINAL	1	15	5
G1449691	G9601143	PLATE GUIDE RIGHT	1	15	8
G1449692	G9601079	SPRING - GUIDE	1	15	9
G1449693	G9601142	PLATE GUIDE LEFT	1	15	10
G1449696	G9601107	FEED ROLLER	1	15	14
G1449697	G9601133	BUSHING - FEED	1	15	15
G1449699	G9601129	EARTH - TRANSFER	1	15	19
G1449700	G9601069	HOLDER - QUENCHIN	1	15	20
G1449701	G9601055	SPRING - TRANSFER	1	15	23
G1449702	G9601060	BUSHING - TRANSFER	1	15	25
G1449703	G9601058	BUSHING - IDLE	1	15	27
G1449704	G9601099	CAM - PICKUP	1	15	28
G1449705	G9601032	SOLENOID - PICKUP	1	15	29
G1449710	G9601140	IDLE - PICKUP	1	15	44
G1449711	G9601066	BEARING - EXIT	1	15	36
G1449712	G9601097	GEAR - EXIT ROLLER	1	15	37
G1449713	G9601174	RACK - EXIT ROLLER	1	15	39
G1449715	G9601026	COOLING FAN	1	3	26
G1449718	G9601059	BUSHING - MP ASS'Y	1	15	45
G1449719	G9601070	STOPPER PICK - UP	1	15	43
G1449720	G9601072	FRICTION PAD HOLDER	1	19	6
G1449721	G9601101	IDEAL GEAR MA ASS'Y	1	19	7
G1449724	G9601153	FRICTION PAD	1	19	12
G1449740	G9601177	FRICTION PAD ASS'Y	1	21	3
G1449741	G9601078	SPRING - FRICTION	1	21	4
G1449744	G9601067	RUBBER FOOT BACK	1	15	3
G1449748	G9601311	FEED SHAFT	1	15	16
G1449749	G9601102	SHAFT PICK-UP ROLLER	1	15	42
G1449750	G9601141	CASSETTE COCKER	1	15	6

Change/Reason: Parts standardization with Model CM-C2.

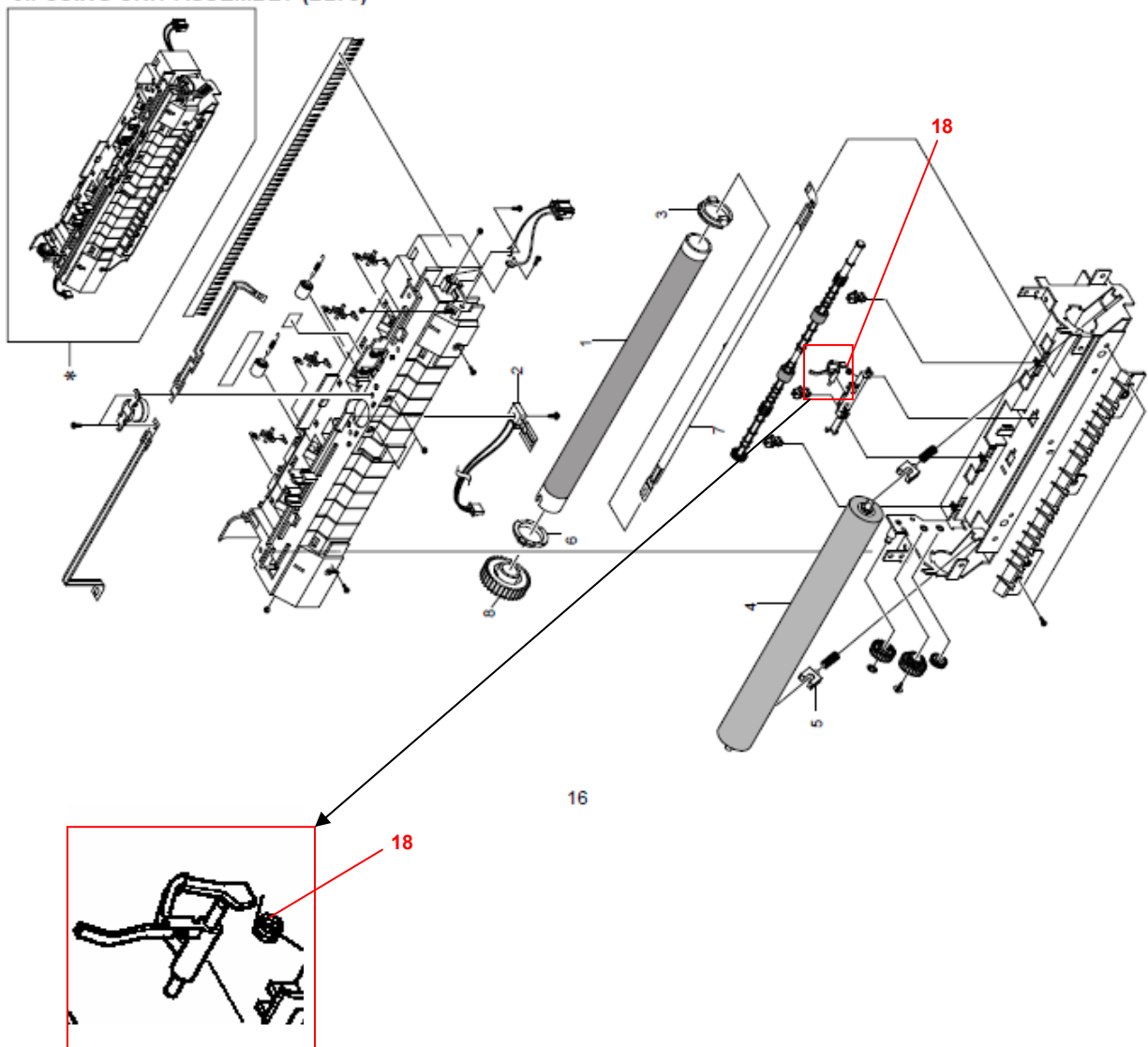
Model: Model CM-C1L		Date: 3-Jun-08	No.: MG959011
Modified Article: Parts in the Fusing unit		Prepared by: T. Shintani	
From: 1st Tech. Support Sec. Service Support Dept.			
Reason for Modification:	<input checked="" type="checkbox"/> Parts catalog correction <input type="checkbox"/> Vendor change <input type="checkbox"/> Other <input type="checkbox"/> To facilitate assembly <input type="checkbox"/> To improve reliability <input type="checkbox"/> To meet standards <input type="checkbox"/> Part standardization <input type="checkbox"/> Product Safety ()		

Change: This part was added.

Reason: Requests from the field.

NEW Part	Description	Q'ty	Int	Page	Index	Note
B1739694	SPRING-TS	0→1	-	17	18	-
B2739808	Sheet-Copy (English)	0→1	-	9	4	-
B2739807	Sheet-Start (English)	0→1	-	9	5	-
B2739806	Sheet-Tel (English)	0→1	-	9	6	-
B2739809	Sheet-Fax (English)	0→1	-	9	7	-

8.FUSING UNIT ASSEMBLY (B273)

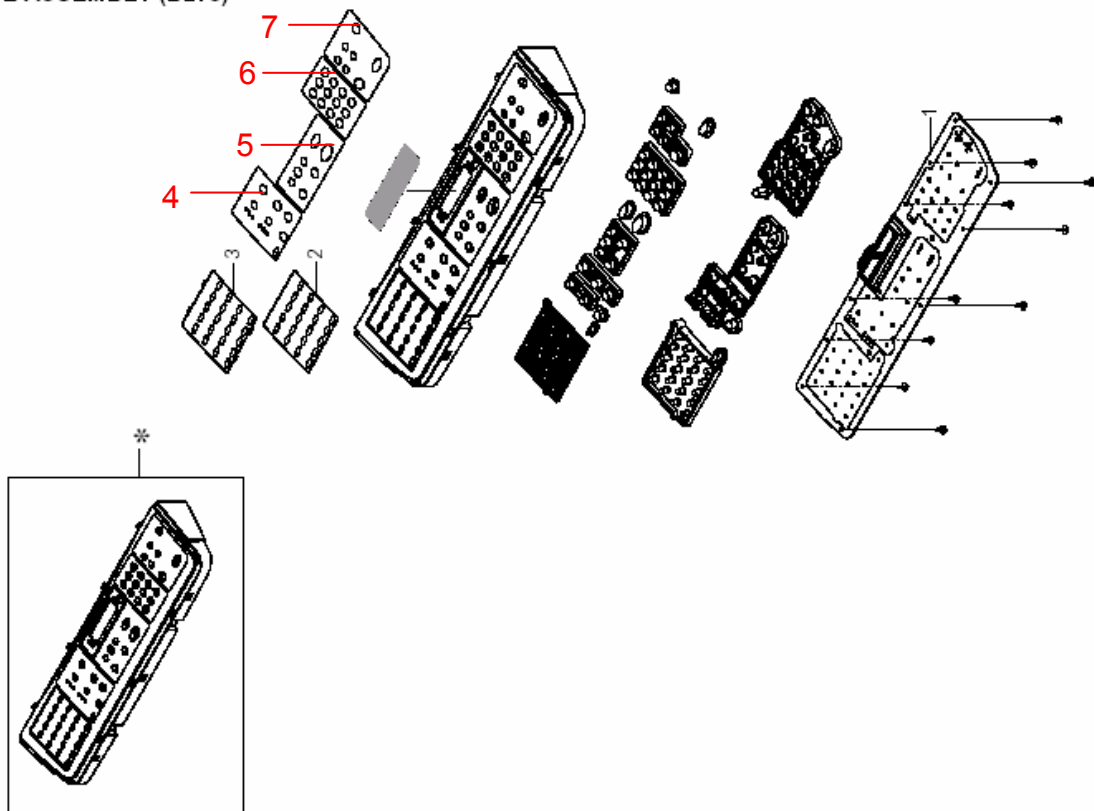


Model: Model CM-C1L

Date: 3-Jun-08

No.: MG959011

4.OPE ASSEMBLY (B273)





Part Change Information List

Date: July 31, 2009

Model	Code	PCIL Nr.	PCIL Correction	Old part number	New part number	Description	Old Q'ty	New Q'ty	Int	3DPC	Page	Index	Set	Set Int	RTB	Note	Ref. Nr.
CM-C1L(EXP)	G959	200907			G1449752	EXIT ROLLER	0	4			15	48			Y		V0901143



Part Change Information List

Date: August 31, 2009

Model	Code	PCIL Nr.	PCIL Correction	Old part number	New part number	Description	Old Q'ty	New Q'ty	Int	3DPC	Page	Index	Set	Set Int	RTB	Note	Ref. Nr.	ECN Nr.
CM-C1L(EXP)	G959	200908			B2739810	SCANNER UNIT	0	1			15	*			Y		V0901145	



Part Change Information List

Date: November 30, 2009

Model	Code	PCIL Nr.	PCIL Correction	Old part number	New part number	Description	Old Q'ty	New Q'ty	Int	3DPC	Page	Index	Set	Set Int	RTB	Note	Ref. Nr.	ECN Nr.
CM-C1L(EXP)	G959	200911		B2739530	B2739583	ADF PICK - UP ASS'Y	1	1	O/O		7	25					V0804694	



Part Change Information List

Date: February 26, 2010

Model	Code	PCIL Nr.	PCIL Correction	Old part number	New part number	Description	Old Q'ty	New Q'ty	Int	3DPC	Page	Index	Set	Set Int	RTB	Note	Ref. Nr.	ECN Nr.
CM-C1L(EXP)	G959	201002		B2739651	B2739811	PSU - CHN:JC44-00071B	1	1	X/O		3	2				For CHINA	V0903213	



Part Change Information List

Date: May 31, 2010

Model	Code	PCIL Nr.	PCIL Correction	Old part number	New part number	Description	Old Q'ty	New Q'ty	Int	3DPC	Page	Index	Set	Set Int	RTB	Note	Ref. Nr.	ECN Nr.
CM-C1L	G959	201005		G9601079	G1861203	SPRING - GUIDE:JC6170932A	1	1	O/O		15	9					V1001047	



Part Change Information List

Date: Jun 30, 2010

Model	Code	PCIL Nr.	PCIL Correction	Old part number	New part number	Description	Old Q'ty	New Q'ty	Int	3DPC	Page	Index	Set	Set Int	RTB	Note	Ref. Nr.	ECN Nr.
CM-C1L(EXP)	G959	201006			B1739804	GEAR DRIVE16	0	1			17	20			RG959005		V1001156	
CM-C1L(EXP)	G959	201006			G1449609	GEAR 25/15	0	1			17	21			RG959005		V1001156	
CM-C1L(EXP)	G959	201006			G1449729	SPRING - BEARING	0	2			17	22			RG959005		V1001117	



Part Change Information List

Date: July 2, 2015

Model	Code	PCIL Number	PCIL Correction	Old part number	New part number	Description	Old Q' ty	New Q' ty	Int	3DPC	Page	Index	Set	Set Int	RTB	Note	Ref Number	ECN Number
CM-C1L(EXP)	G959	201506		H9149724	G9601137	END FENCE:JC7200971F	1	1	O/O	N	21	2					V0700910	
CM-C1L(EXP)	G959	201506		H9149719	G9601127	LEFT SIDE FENCE:JC7000300F	2	2	O/O	N	21	8					V0700910	
CM-C1L(EXP)	G959	201506		H9149720	G9601128	RIGHT SIDE FENCE:JC7000301F	2	2	O/O	N	21	9					V0700910	