

Model: Model CM-C1		Date: 5-Sep-05	No.: MB273001
Modified Article: ACTUATOR - FEED		Prepared by: T. Shintani	
From: 1st Technical Support Sec. Service Support Dept.			
Reason for Modification:	<input checked="" type="checkbox"/> Parts catalog correction <input type="checkbox"/> To facilitate assembly <input type="checkbox"/> Part standardization	<input type="checkbox"/> Vendor change <input type="checkbox"/> To improve reliability <input type="checkbox"/> Other	<input type="checkbox"/> To meet standards ()
Modification Schedule:	From first mass production.		

<B273 > (Model CM-C1)

Old part number	New part number	Description	Q'ty	Int	Page	Index	Note
G1449546	G1449608	ACTUATOR - FEED	1→1	1	16	11	

*This change applies only to the part number modification. This was done for parts number management.

Model: Model CM-C1		Date: 14-Mar-06	No.: MB273002
Modified Article: Parts Catalog Correction		Prepared by: T. Shintani	
From: 1st Tech. Support Sec. Service Support Dept.			
Reason for Modification:	<input checked="" type="checkbox"/> Parts catalog correction <input type="checkbox"/> Vendor change <input type="checkbox"/> Other <input type="checkbox"/> To facilitate assembly <input type="checkbox"/> To improve reliability <input type="checkbox"/> To meet standards <input type="checkbox"/> Part standardization <input type="checkbox"/> Product Safety ()		

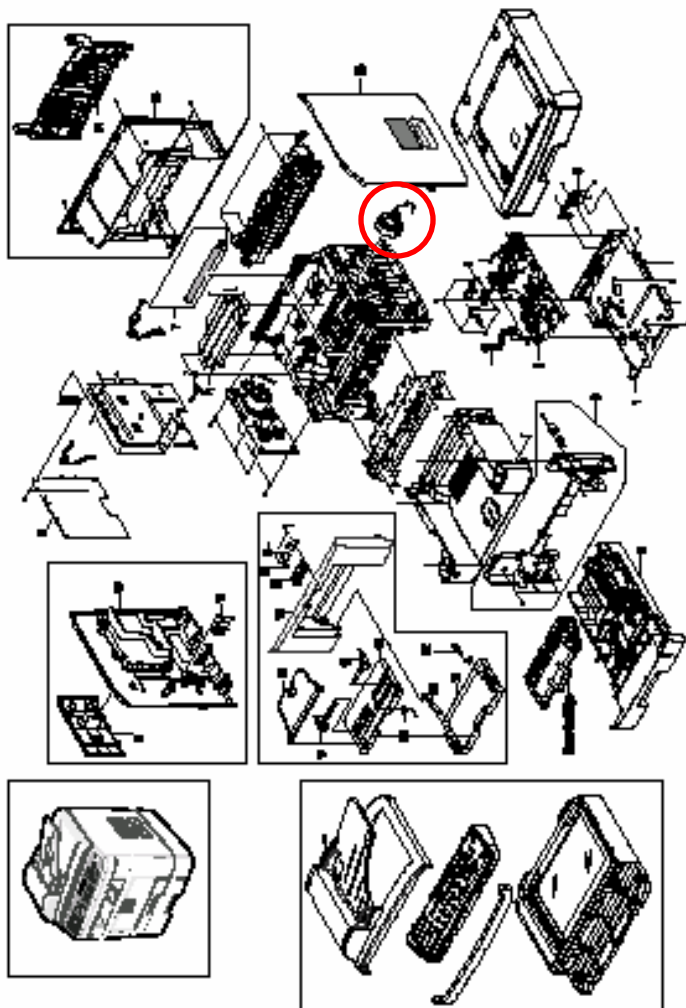
Part Number	Description	Q'ty	Int	Page	Index	Note
G1449580	COOLING FAN	1	- / -	3	26	-

Change: This part was added.

Reason: A request was received from the field.

Note: See the illustration as follows.

1. MAIN ASSEMBLY



82278102 1/2007

Reissued: 24-Jul-06

Model: Model CM-C1	Date: 19-Jul-06	No.: MB273003a
--------------------	-----------------	----------------

MB Correction

The items in bold italics have been corrected or added.

Modified Article: Parts catalog correction		Prepared by: T. Shintani	
From: 1st Technical Support Sec. Service Support Dept.			
Reason for Modification:	<input checked="" type="checkbox"/> Parts catalog correction <input type="checkbox"/> To facilitate assembly <input type="checkbox"/> Part standardization	<input type="checkbox"/> Vendor change <input type="checkbox"/> To improve reliability <input type="checkbox"/> Other	<input type="checkbox"/> To meet standards ()
Modification Schedule:	From first mass production.		

Change: The materials of the following parts were changed.**Reason:** To comply with the RoHS Directive.**Note:** The Parts Catalog will be reissued soon. See the catalog for more details.

Old Part Number	New Part Number	Part Name
H9149557	H9149725	EXIT ROLLER POLE
G1449601	H9149724	END FENSE
B2739557	H9149720	SIDE FENCE - R
B2739556	H9149719	SIDE FENSE - L
B1739647	H9149713	SOLENOID - BYPASS
B1739641	H9149711	IDLE SHAFT - FEED
B1739639	H9149710	BUSHING - TRANSFE
B1739638	H9149709	FEED ROLLER
B1739636	H9149708	LENS - QUENCHING
B1739631	H9149706	SPONGE ROLLER - PICK
B1739626	H9149703	ACTUATOR - PAPER
B1739621	H9149701	ACTUATOR - COVER
H2389512	H2389657	SETPPING MOTOR 15
H2389511	H2389656	PFU MOTOR ASS'Y
H2389507	H2389654	PFU BOARD
G1449542	G1449750	CASSETTE COCKER
G1449570	G1449749	SHAFT PICK-UP ROLLER
G1449550	G1449748	FEED SHAFT
G1449567	G1449747	FEED SHAFT GEAR
G1449596	G1449746	GEAR 53/26
G1449576	H9149725	EXIT ROLLER
G1449539	G1449744	TRANSFER GUIDE
B2739558	G1449743	SIDE FENCE - R
G1449603	G1449741	SPRING - FRICTION

Model: Model CM-C1		Date:19-Jul-06	No.:MB273003
G1449602	G1449740	FRICTION PAD ASS'Y	
G1449600	G1449739	EXTENSION - END	
G1449599	G1449737	STEPPING MOTOR 15	
G1449598	G1449736	GEAR 90/31	
G1449597	G1449735	GEAR 103/41	
G1449596	G1449734	GEAR 53/26	
B2739500	G1449733	WHITE SHEET	
G1449595	G1449732	HALOGEN LAMP 220V	
G1449594	G1449731	HALOGEN LAMP 110	
G1449593	G1449730	HEAT ROLLER BUSHING	
G1449591	G1449728	BEARING PRESSER	
G1449590	G1449727	PRESSER ROLLER	
G1449589	G1449726	BUSHING HEAT ROLLER	
G1449586	G1449724	FRICTION PAD	
G1449585	G1449723	PICK-UP ROLLER	
G1449584	G1449722	IDEL FEED ROLLER	
G1449568	G1449721	IDEAL GEAR MA ASS'Y	
G1449583	G1449720	FRICTION PAD HOLDER	
G1449572	G1449719	STOPPER PICK - UP	
G1449574	G1449718	BUSHING - MP ASS'Y	
G1449580	G1449715	COOLING FAN	
B2739546	G1449714	RACK - EXIT ROLLE	
B2739545	G1449713	FEED CLUTCH ASS'Y	
G1449575	G1449712	GEAR - EXIT ROLLE	
B1739611	G1449711	PAPER STACK - EXT	
G1449573	G1449710	IDLE - PICKUP	
G1449569	G1449708	BUSHING - PICKUP	
B2739543	G1449707	PICK - UP GEAR ASS'Y	
B2739542	G1449706	PAPER PICK - UP	
G1449558	G1449705	CAM - PICKUP	
G1449557	G1449704	CAM - PICKUP	
G1449556	G1449703	BUSHING - IDLE	
G1449555	G1449702	BUSHING - TRANSFER	
G1449554	G1449701	SPRING - TRANSFER	
G1449553	G1449700	HOLDER - QUENCHIN	
G1449552	G1449699	EARTH - TRANFSE	

Model: Model CM-C1		Date:19-Jul-06	No.:MB273003
B2739541	G1449698	PAPER PICK - UP	
G1449549	G1449697	BUSHING - FEED	
G1449548	G1449696	FEED ROLLER	
G1449547	G1449695	ACTUATOR - MANUAL	
G1449608	G1449694	ACTUATOR - FEED	
G1449545	G1449693	PLATE GUIDE LEFT	
G1449544	G1449692	SPRING - GUIDE	
G1449543	G1449691	PLATE GUIDE RIGHT	
G1449541	G1449690	MEC TERMINAL	
G1449540	G1449689	RUBBER FOOT FRONT	
G1449538	G1449688	TRANSFER GUIDE	
G1449537	G1449687	TRANSFER GUIDE UP	
G1449532	G1449683	LASER UNIT	
B2739505	G1449682	NCU US, ASIA, CHINA	
G1449521	G1449670	TRAY LINE - BYPASS	
B2739564	G1449668	DOCUMENT FEEDER	
B2739563	G1449667	ADJUSTMENT - DOCUMEN	
B2739562	G1449666	KNOB HOLDER - FRONT	
B2739513	G1449665	FRONT COVER	
G1449515	G1449664	EXTENSION - BYPASS	
G1449505	G1449655	BUSHING -PAPER	
B2739555	B2739732	SPRING - LOCKER P	
B2739507	B2739731	CASSETTE ASS'Y	
B8739503	B8739653	REAR COVER - OPTION	
B8739502	B8739652	RIGHT COVER - OPTION	
B8739501	B8739651	LEFT COVER	
B8739500	B8739650	COVER CASSETTE	
G1449528	G1449678	PSU - 100V	
B2739554	B2739730	COVER CASSETTE	
B2739567	B2739729	SPONGE ROLLER - PICK	
B2739553	B2739728	PAPER PICK - UP ASS'	
B2739552	B2739727	SOLENOID - MP ASS'Y	
B2739551	B2739726	MP ASS'Y	
B2739550	B2739725	THERMISTOR	
B2739549	B2739724	HEAT ROLLER	
B2739548	B2739723	FUSING UNIT 220V	

Model: Model CM-C1		Date:19-Jul-06	No.:MB273003
B2739547	B2739722	FUSING UNIT 110V	
B2739544	B2739719	FEED CLUTCH ASS'Y	
B2739540	B2739715	PCB - USB HOST	
B2739539	B2739714	PAPER STACK - EXIT	
B2739538	B2739713	UPPER REAR COVER	
B2739537	B2739712	MIDDLE COVER	
B1739606	B2739711	SCANNER MOTOR 18W	
B2739536	B2739710	SCANNER MOTOR ASS'Y	
B2739535	B2739709	CCD HOLDER	
B1739602	B2739708	PLATEN COVER SENSOR	
B1739601	B2739707	SENSOR LEVER	
B1739604	B2739706	TIMING BELT - SCANNE	
B2739534	B2739705	FLAT CABLE - CCD	
B2739533	B2739704	CCD UNIT	
B1749541	B2739703	FRICTION PAD ASS'Y	
B2739532	B2739702	PLATEN COVER ASS'Y	
B1739589	B2739701	PLATEN GLASS	
B2739531	B2739700	SCANNER COVER	
B2739571	B2739699	QUICK DIAL SHEET	
B2739570	B2739698	QUICK DIAL COVER	
B2739569	B2739697	OPU BOARD	
B2739568	B2739696	OP - PORT	
B2739529	B2739695	DAMPER - ADF	
B1739586	B2739694	PAPER GUIDE - ADF	
B2739528	B2739693	ADF TOP COVER	
B2739527	B2739692	HINGE - PLATEN	
B2739526	B2739691	PINCH ROLLER	
B2739525	B2739690	DOCUMENT GUIDE - RIG	
B2739524	B2739689	DOCUMENT GUIDE	
B2739523	B2739688	DOCUMEN TABLE	
B1739574	B2739687	SPONGE SHEET	
B2739522	B2739686	PLATEN COVER	
B1739564	B2739685	IMPELLER - ADF	
B1739562	B2739684	LINK - SWING : ADF	
B2739521	B2739683	ADF MOTOR 5.2W	
B2739520	B2739682	ADF HARNESS	

Model: Model CM-C1	Date:19-Jul-06	No.:MB273003
--------------------	----------------	--------------

B1749597	B2739681	WHITE SHEET
B1739546	B2739680	EXIT ROLLER - ADF
B1739542	B2739679	ACTUATOR - ADF
B1739541	B2739678	ACTUATOR - ADF
B2739519	B2739677	ACTUATOR - ADF DOCUM
B1739539	B2739676	ADF DRIVE ROLLER
B2739518	B2739675	PCB - ADF
B2739517	B2739674	ADF RUBBER PAD
B2739516	B2739673	ADF UPPER COVER
B2739515	B2739672	FACE UP DOOR
B2739514	B2739671	REAR COVER
B2739565	B2739670	CASE - DOCUMENT FEED
B2739561	B2739665	KNOB HOLDER - FRONT
B2739560	B2739664	KNOB - FRONT COVER
B2739512	B2739663	FRONT COVER
B2739511	B2739662	SPEAKER
B2739509	B2739661	OVER - MEMORY
B2739508	B2739660	LEFT COVER
B2739506	B2739659	MIDDLE FRONT COVER
B2739572	B2739657	RIGHT COVER
B2739566	B2739656	NCU EU
B2739504	B2739655	NCU US, ASIA, CHINA
B2739503	B2739654	NCU BRACKET
B2739502	B2739653	SHIELD PLATE
B2739501	B2739652	MAIN BOARD
B2739559	B2739651	PSU-200V

Reissued: 24-Jul-06

Model: Model CM-C1	Date: 19-Jul-03	No.: MB273004a
--------------------	-----------------	----------------

MB Correction

The items in bold italics have been corrected or added.

Modified Article: Exit roller pole		Prepared by: T. Shintani	
From: 1st Technical Support Sec. Service Support Dept.			
Reason for Modification:	<input checked="" type="checkbox"/> Parts catalog correction	<input type="checkbox"/> Vendor change	<input type="checkbox"/> To meet standards ()
	<input type="checkbox"/> To facilitate assembly	<input type="checkbox"/> To improve reliability	
	<input type="checkbox"/> Part standardization	<input type="checkbox"/> Other	
Modification Schedule:	From first mass production.		

<B273> (Model CM-C1)

OLD part number	NEW part number	Description	Q'ty	Int	Page	Index	Note
G1449576	H9149725	Exit roller pole	1→1	-	16	38	

Change/Reason: The part number in the Parts Catalog was corrected.

Model: Model CM-C1		Date: 14-Mar-06	No.: MB273005
Modified Article: Parts Catalog Correction		Prepared by: T. Shintani	
From: 1st Tech. Support Sec. Service Support Dept.			
Reason for Modification:	<input checked="" type="checkbox"/> Parts catalog correction <input type="checkbox"/> Vendor change <input type="checkbox"/> Other <input type="checkbox"/> To facilitate assembly <input type="checkbox"/> To improve reliability <input type="checkbox"/> To meet standards <input type="checkbox"/> Part standardization <input type="checkbox"/> Product Safety ()		

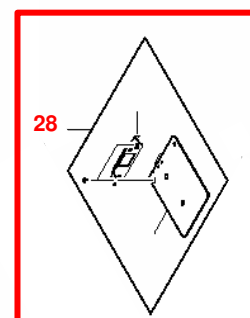
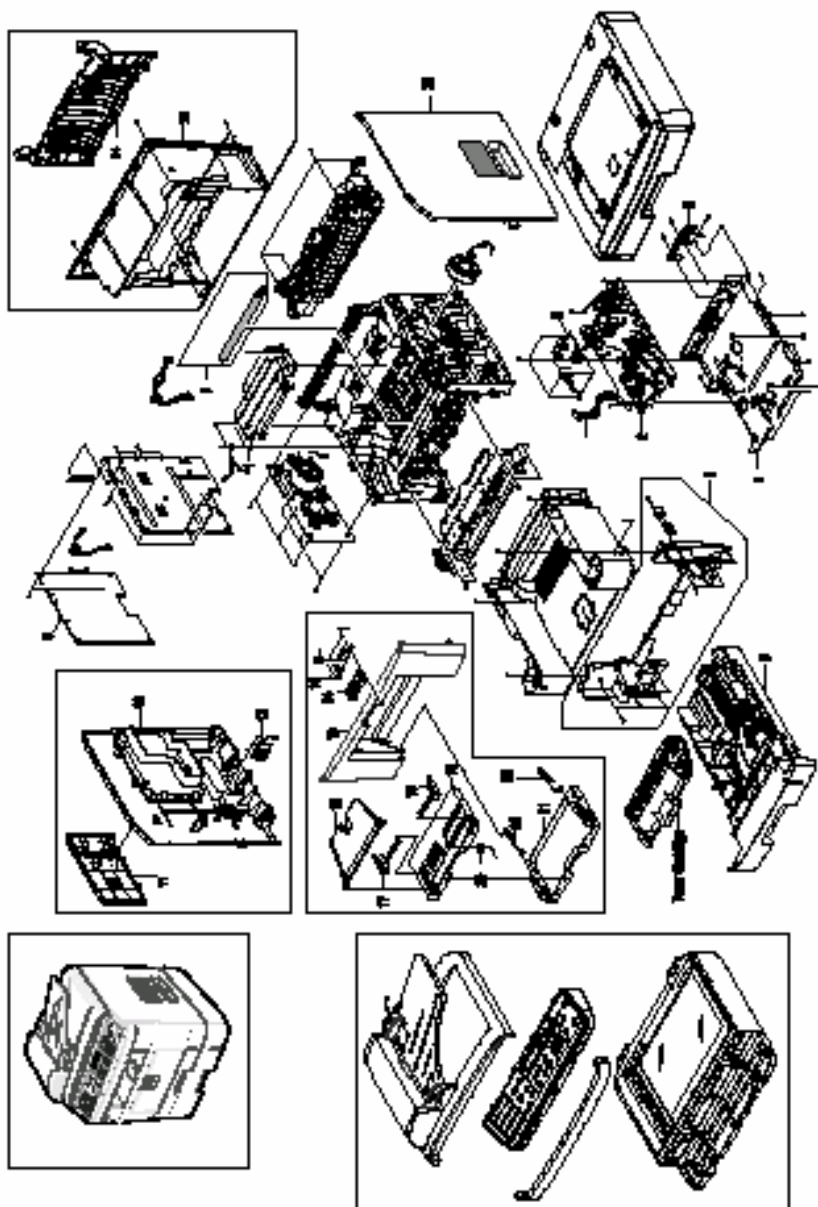
OLD part number	NEW part number	Description	Q'ty	Int	Page	Index	Note
-	B2739574	NETWORK BOARD	0→1	-	3	28	

Change: This part was added.

Reason: A request was received from the field.

Note: See the illustration below.

1. MAIN ASSEMBLY



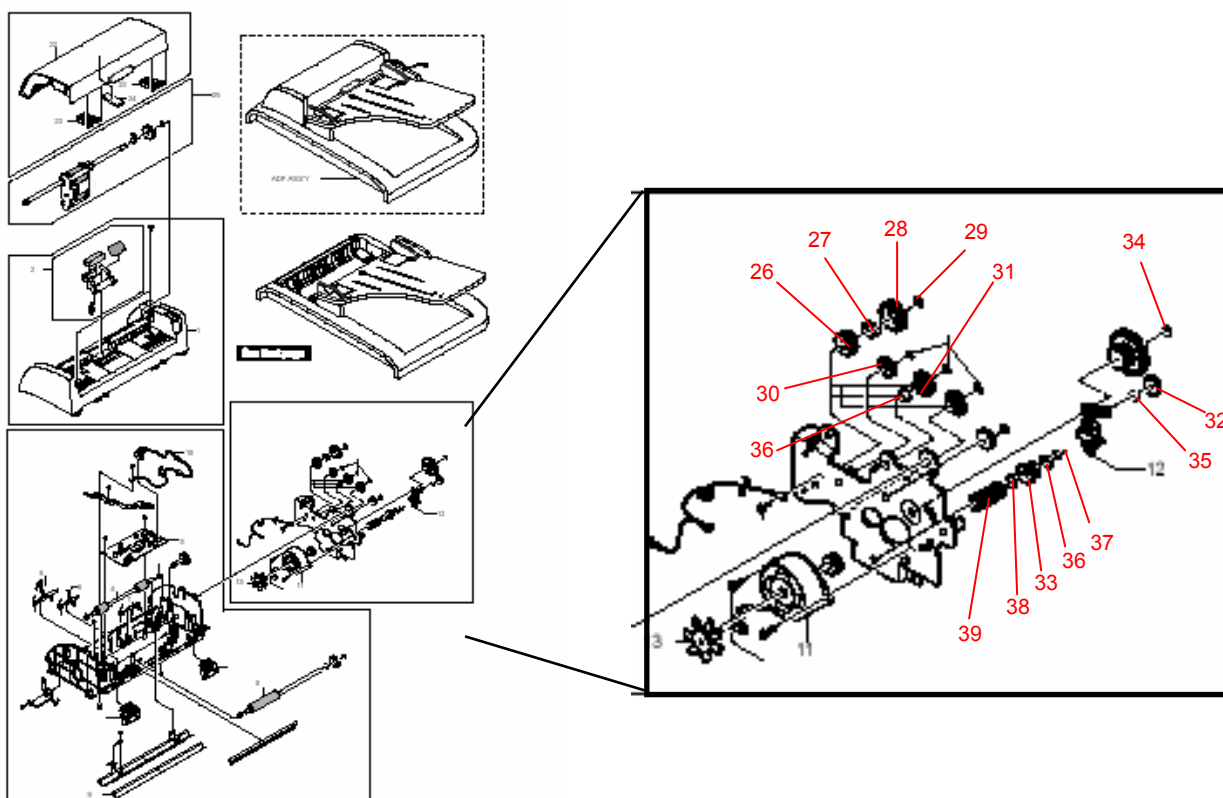
Model: Model CM-C1		Date: 8-Aug-06	No.: MB273006
Modified Article: Parts Catalog Correction		Prepared by: T. Shintani	
From: 1st Tech. Support Sec. Service Support Dept.			
Reason for Modification:	<input checked="" type="checkbox"/> Parts catalog correction <input type="checkbox"/> Vendor change <input type="checkbox"/> Other <input type="checkbox"/> To facilitate assembly <input type="checkbox"/> To improve reliability <input type="checkbox"/> To meet standards <input type="checkbox"/> Part standardization <input type="checkbox"/> Product Safety ()		

Change: This part was added.

Reason: Requests from the field.

NEW Part	Description	Q'ty	Int	Page	Index	Note
B1739681	GEAR-CLUTCH 29	0→1	-	3-8	26	
B1739682	WHITE CLUTCH SUB 29	0→1	-	3-8	27	
B1739683	GEAR-CLUTCH 39	0→1	-	3-8	28	
B1739684	C-RING	0→1	-	3-8	29	
B1739685	GEAR-IDLE 35 ADF	0→1	-	3-8	30	
B1739686	GEAR-40/21 ADF	0→1	-	3-8	31	
B1739687	GEAR-SWING 31/20 ADF	0→1	-	3-8	32	
B2739575	ADF GEAR-REMOVE	0→1	-	3-8	33	
B2739576	WASHER PLAIN	0→1	-	3-8	34	
B1739689	IPR-WASHER WAVE	0→1	-	3-8	35	
B2739577	WASHER-PLAIN	0→2	-	3-8	36	
B2739578	E-RING	0→1	-	3-8	37	
B2739579	PLAIN WASHER	0→1	-	3-8	38	
B1739690	SPRING-ADF	0→1	-	3-8	39	

3. ADF ASSEMBLY



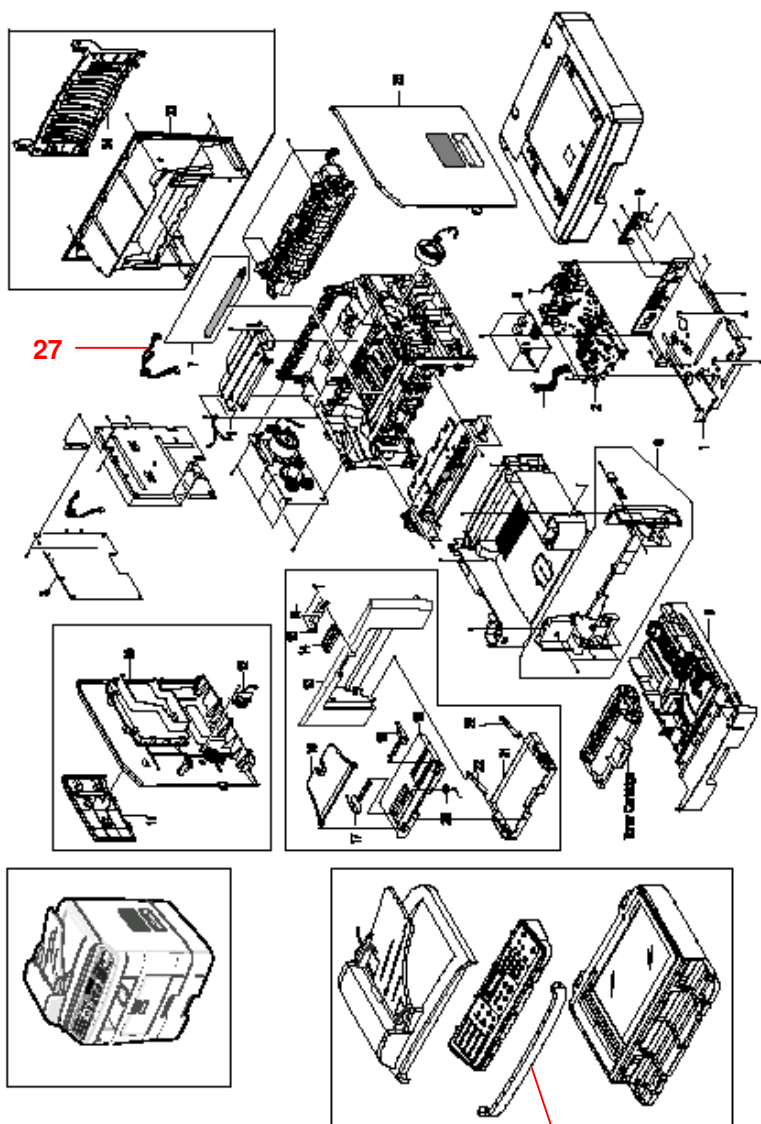
Model: Model CM-C1		Date: 13-Sep-06	No.: MB273007
Modified Article: Parts Catalog Correction		Prepared by: T. Shintani	
From: 1st Tech. Support Sec. Service Support Dept.			
Reason for Modification:	<input checked="" type="checkbox"/> Parts catalog correction <input type="checkbox"/> Vendor change <input type="checkbox"/> Other <input type="checkbox"/> To facilitate assembly <input type="checkbox"/> To improve reliability <input type="checkbox"/> To meet standards () <input type="checkbox"/> Part standardization <input type="checkbox"/> Product Safety		

Change: These parts were added.

Reason: Requests from the field.

NEW Part	Description	Q'ty	Int	Page	Index	Note
B2739573	LSU Harness Ground	0→1	-	1-3	27	
B2739580	Cover – OPE front	0→1	-	1-3	29	
B2739582	Cover – Scan Lower	0→1	-	4-12	13	
B2739581	Gear - Fuser	0→1	-	7-19	8	

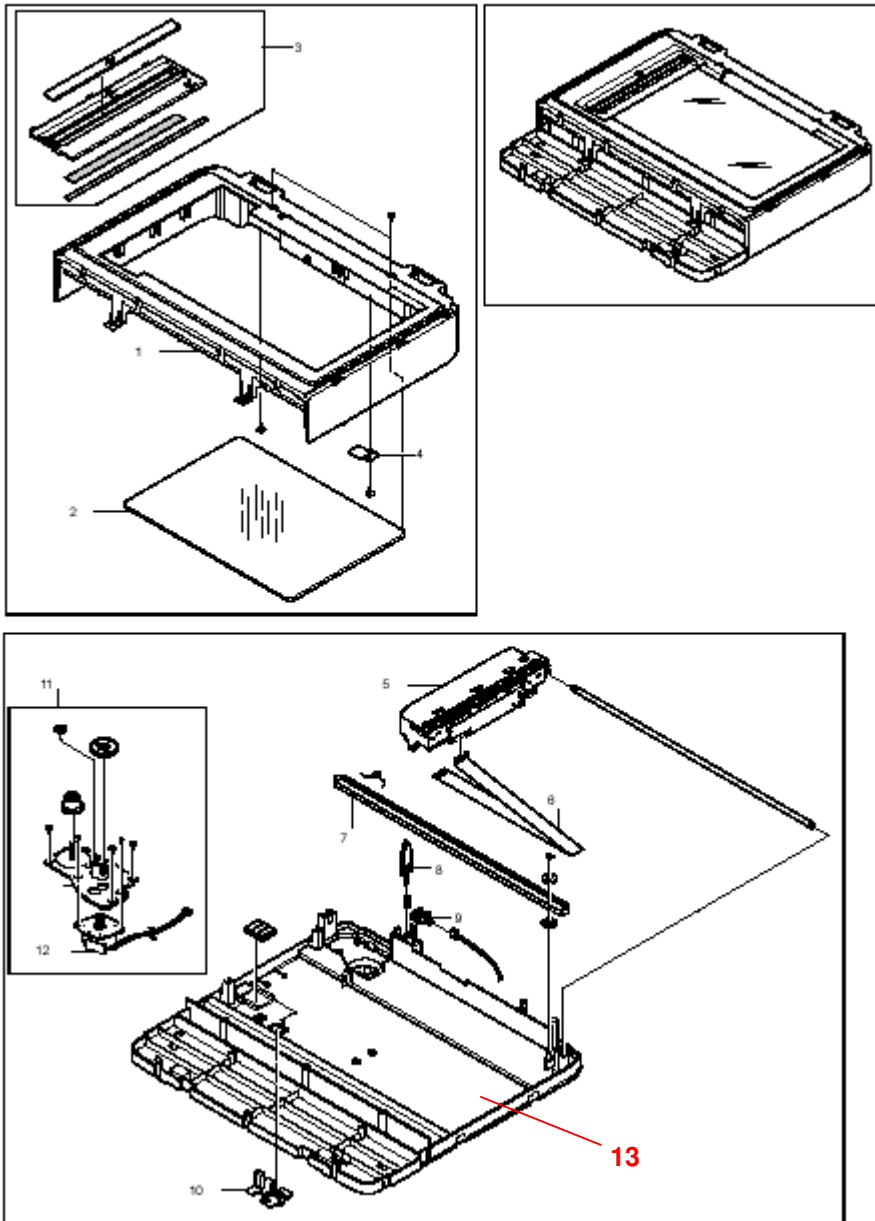
1. MAIN ASSEMBLY



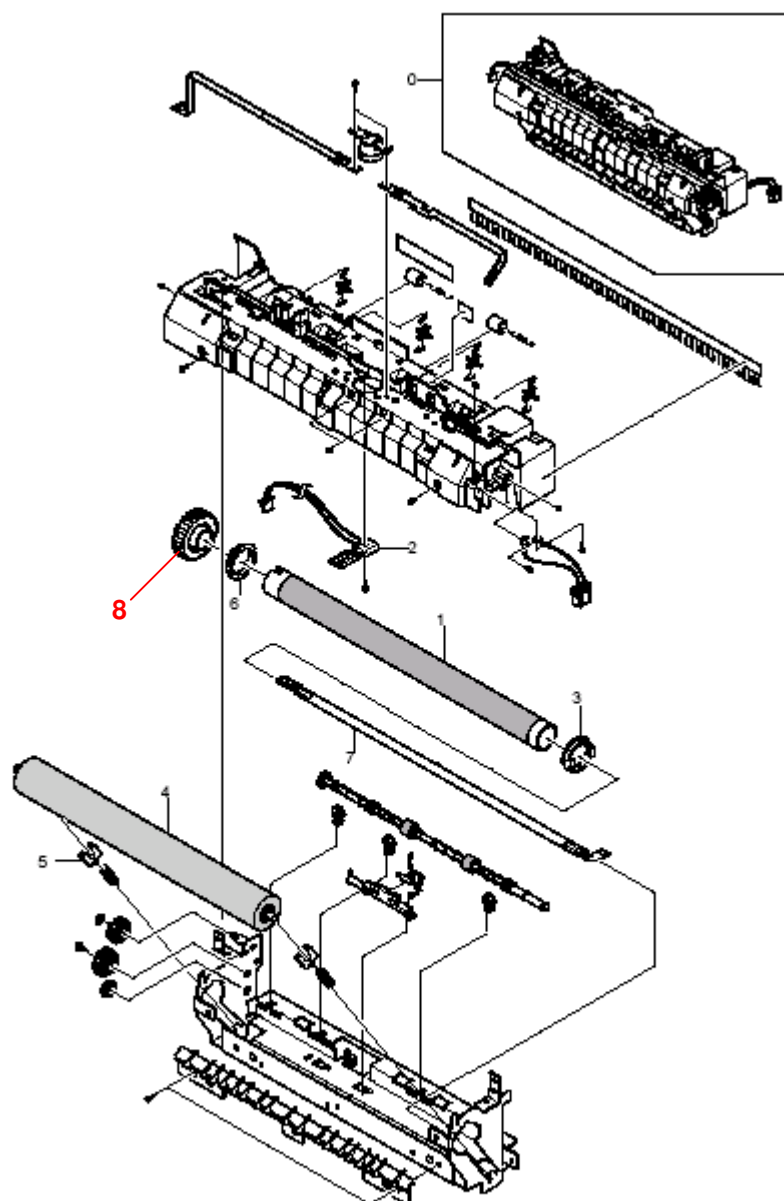
B2739501 VWWF

29

5. SCANNER ASSEMBLY



8. FUSING UNIT ASSEMBLY



B273P910 WMP

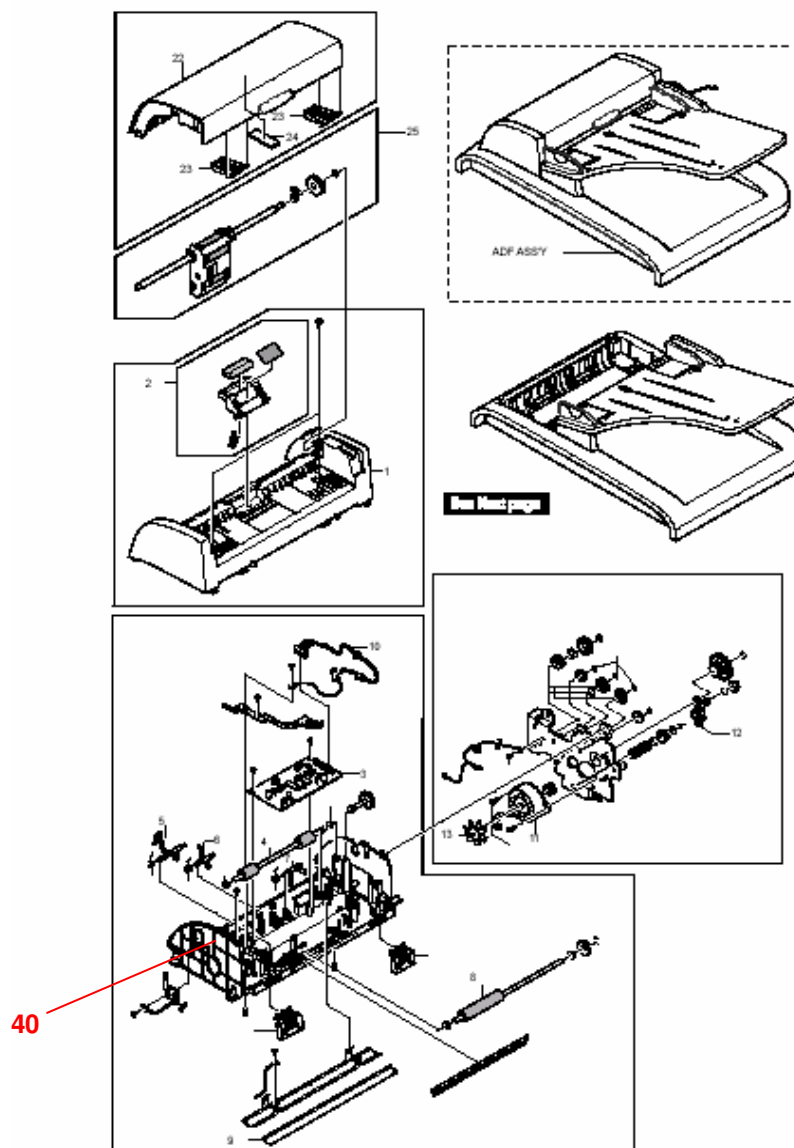
Model: Model CM-C1		Date: 11-Oct-06	No.: MB273008
Modified Article: Parts Catalog Correction		Prepared by: T. Shintani	
From: 1st Tech. Support Sec. Service Support Dept.			
Reason for Modification:	<input checked="" type="checkbox"/> Parts catalog correction <input type="checkbox"/> Vendor change <input type="checkbox"/> Other <input type="checkbox"/> To facilitate assembly <input type="checkbox"/> To improve reliability <input type="checkbox"/> To meet standards <input type="checkbox"/> Part standardization <input type="checkbox"/> Product Safety ()		

Change: These parts were added.

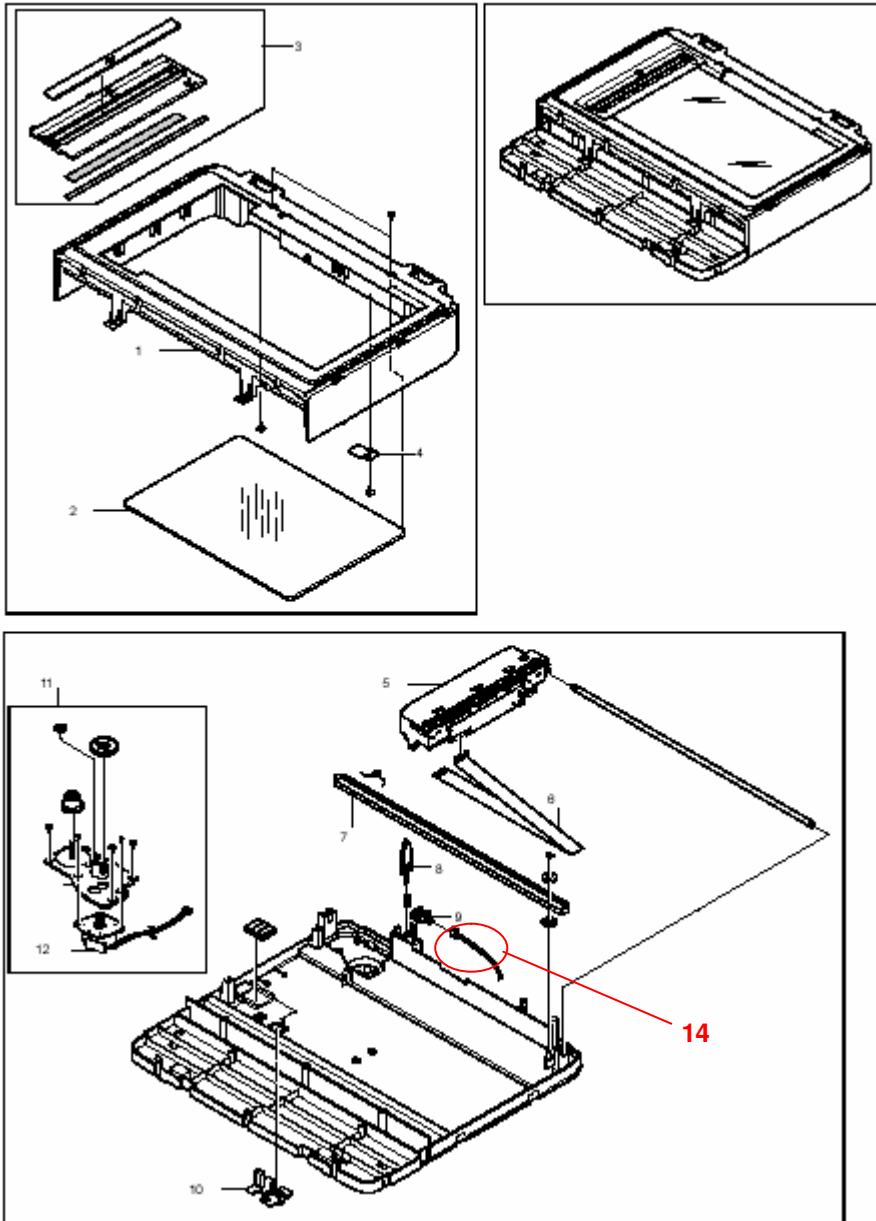
Reason: Requests from the field.

NEW Part	Description	Q'ty	Int	Page	Index	Note
B2737500	ADF LOWER COVER	0→1	-	3-8	40	
B2737501	HARNESS PLATEN	0→1	-	4-12	14	

3. ADF ASSEMBLY



5. SCANNER ASSEMBLY



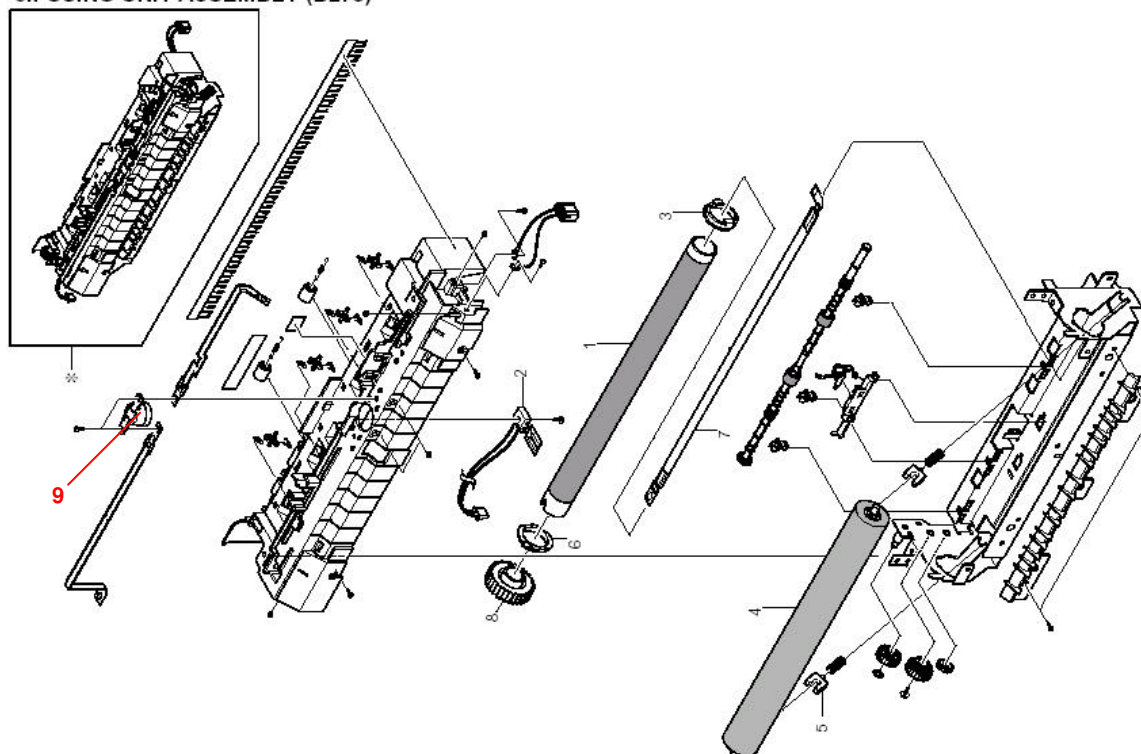
Model: Model CM-C1		Date: 27-Dec-06	No.: MB273009
Modified Article: Parts Catalog Correction		Prepared by: T. Shintani	
From: 1st Tech. Support Sec. Service Support Dept.			
Reason for Modification:	<input checked="" type="checkbox"/> Parts catalog correction	<input type="checkbox"/> Vendor change	<input type="checkbox"/> Other
	<input type="checkbox"/> To facilitate assembly	<input type="checkbox"/> To improve reliability	<input type="checkbox"/> To meet standards
	<input type="checkbox"/> Part standardization	<input type="checkbox"/> Product Safety	()

Change: These parts were added.

Reason: Requests from the field.

NEW Part	Description	Q'ty	Int	Page	Index	Note
B2737502	THERMOSTAT	0→1	1	7-19	9	

8.FUSING UNIT ASSEMBLY (B273)



Model: Model CM-C1		Date: 25-Jan-07	No.: MB273010
Modified Article: Parts Catalog Correction		Prepared by: T. Shintani	
From: 1st Tech. Support Sec. Service Support Dept.			
Reason for Modification:	<input checked="" type="checkbox"/> Parts catalog correction <input type="checkbox"/> Vendor change <input type="checkbox"/> Other <input type="checkbox"/> To facilitate assembly <input type="checkbox"/> To improve reliability <input type="checkbox"/> To meet standards <input type="checkbox"/> Part standardization <input type="checkbox"/> Product Safety ()		

Change: The following part number was changed

Reason: Part number registration mistake.

OLD Part	NEW Part	Description	Q'ty	Int	Page	Index	Note
G1449678	B2737503	PSU 100V	1→1	1	1-3	2	

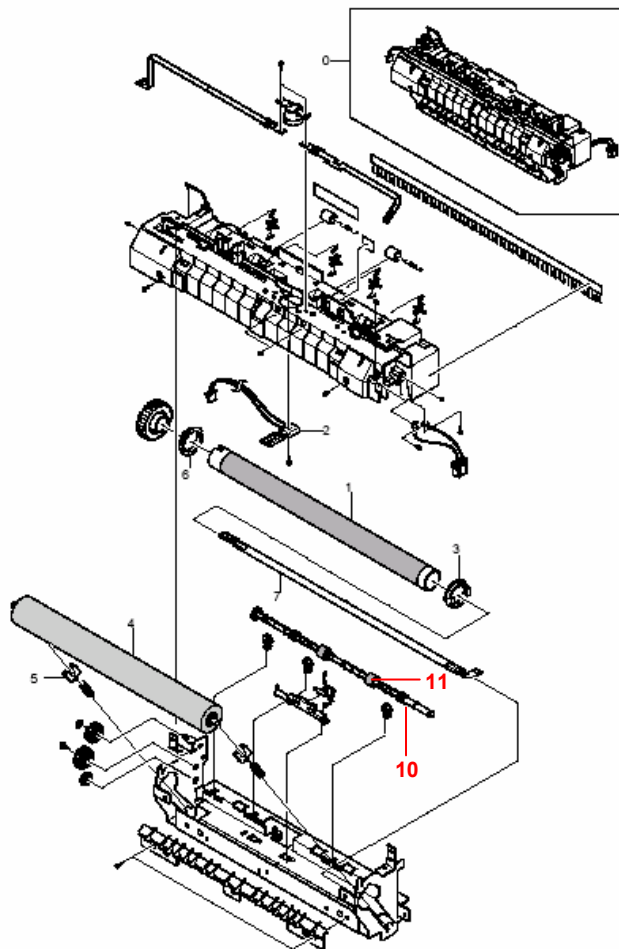
Model: Model CM-C1		Date: 30-JAN-07	No.: MB273011
Modified Article: SHAFT AND RUBBER - FUSING		Prepared by: T. Shintani	
From: 1st Tech. Support Sec. Service Support Dept.			
Reason for Modification:	<input checked="" type="checkbox"/> Parts catalog correction <input type="checkbox"/> Vendor change <input type="checkbox"/> Other <input type="checkbox"/> To facilitate assembly <input type="checkbox"/> To improve reliability <input type="checkbox"/> To meet standards <input type="checkbox"/> Part standardization <input type="checkbox"/> Product Safety ()		

Change: These parts were added.

Reason: Requests from the field.

NEW Part	Description	Q'ty	Int	Page	Index	Note
B2737504	EXIT ROLLER SHAFT – FUSING	0→1	1	7-19	10	
B2737505	SHAFT RUBBER - FUSING	0→1	2	7-19	11	

8. FUSING UNIT ASSEMBLY



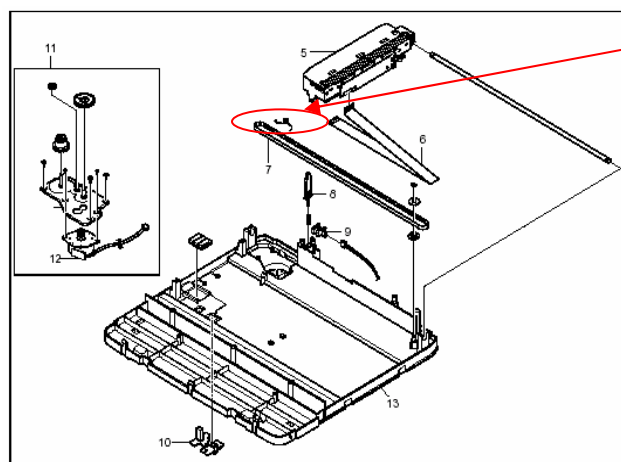
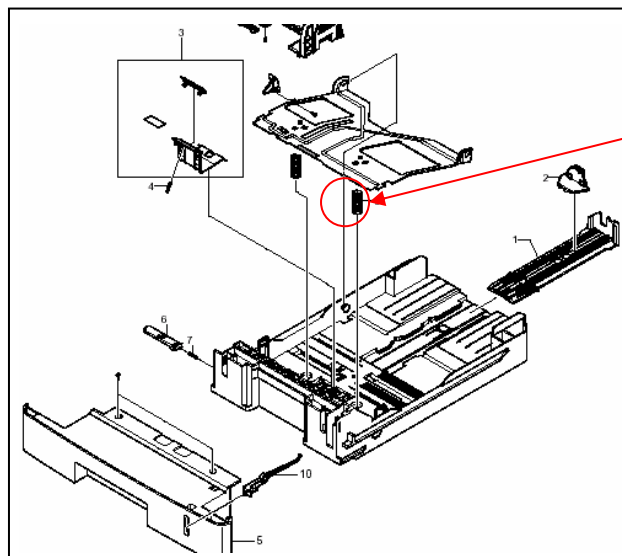
B273P910-WMP

Model: Model CM-C1		Date: 5-Mar-07	No.: MB273012
Modified Article: New parts were added		Prepared by: Y.Yoshida	
From: 1st Tech. Support Sec. Service Support Dept.			
Reason for Modification:	<input checked="" type="checkbox"/> Parts catalog correction <input type="checkbox"/> Vendor change <input type="checkbox"/> Other <input type="checkbox"/> To facilitate assembly <input type="checkbox"/> To improve reliability <input type="checkbox"/> To meet standards <input type="checkbox"/> Part standardization <input type="checkbox"/> Product Safety ()		

Change: These parts were added.

Reason: Requests from the field.

NEW Part	Description	Q'ty	Int	Page	Index	Note
B2737506	Sprig - Cassette	0→1	1	9-23	11	
B1749544	Spring-Scanner belt	0→1	1	4-11	15	



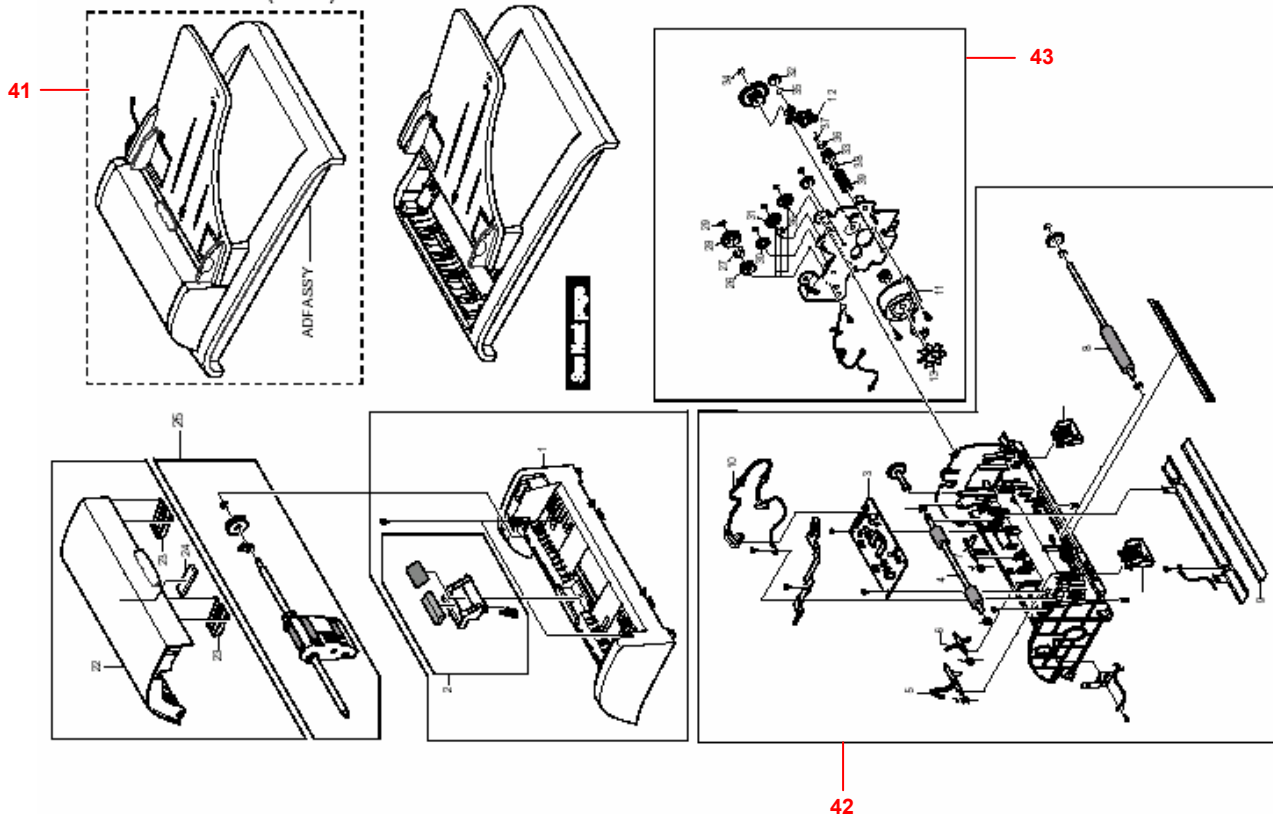
Model: Model CM-C1		Date: 25-MAY-07	No.: MB273013
Modified Article: ADF ASSEMBLY PARTS		Prepared by: T. Shintani	
From: 1st Tech. Support Sec. Service Support Dept.			
Reason for Modification:	<input checked="" type="checkbox"/> Parts catalog correction <input type="checkbox"/> Vendor change <input type="checkbox"/> Other <input type="checkbox"/> To facilitate assembly <input type="checkbox"/> To improve reliability <input type="checkbox"/> To meet standards <input type="checkbox"/> Part standardization <input type="checkbox"/> Product Safety ()		

Change: These parts were added.

Reason: Requests from the field.

NEW Part	Description	Q'ty	Int	Page	Index	Note
B2737507	ADF ASSY	0→1	1	3-8	41	
B2737508	ADF LOWER ASSY	0→1	1	3-8	42	
B2737509	ADF GEAR ASSY	0→1	1	3-8	43	

3.ADF ASSEMBLY (B273)



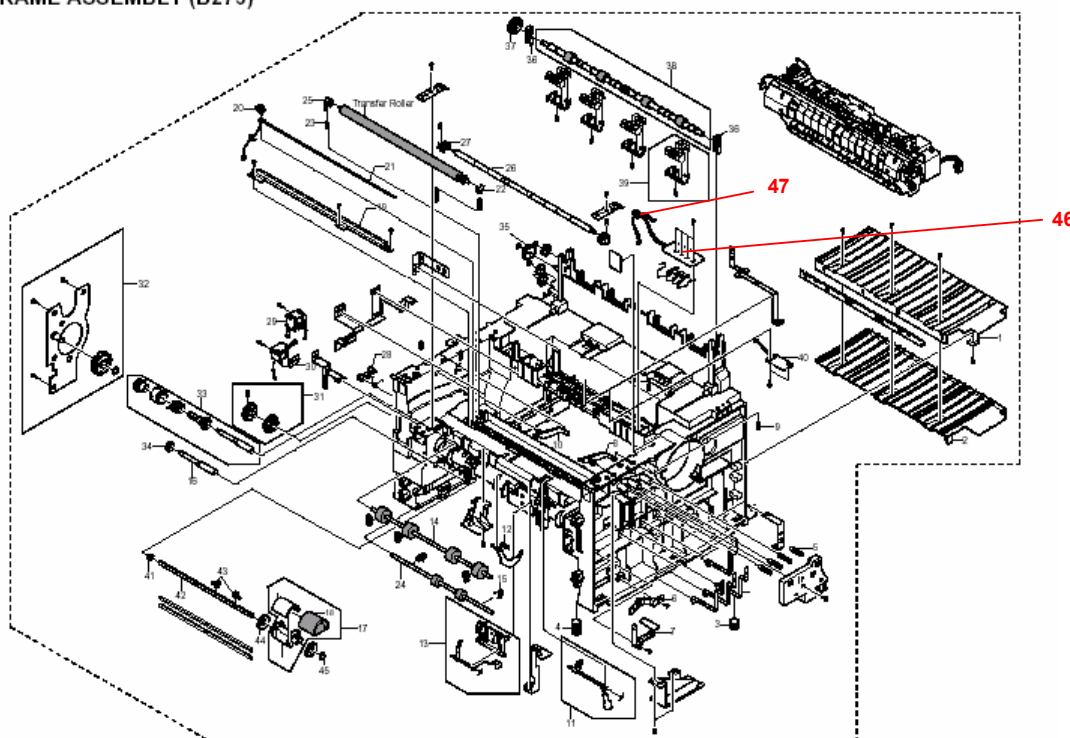
Model: Model CM-C1		Date: 15-Jun-07	No.: MB273014
Modified Article: ADF ASSEMBLY PARTS		Prepared by: T. Shintani	
From: 1st Tech. Support Sec. Service Support Dept.			
Reason for Modification:	<input checked="" type="checkbox"/> Parts catalog correction <input type="checkbox"/> Vendor change <input type="checkbox"/> Other <input type="checkbox"/> To facilitate assembly <input type="checkbox"/> To improve reliability <input type="checkbox"/> To meet standards <input type="checkbox"/> Part standardization <input type="checkbox"/> Product Safety ()		

Change: These parts were added.

Reason: Requests from the field.

NEW Part	Description	Q'ty	Int	Page	Index	Note
B2737510	PBA-SUB	0→1	1	14	46	
B2737511	HARNESS PBA-SUB	0→1	1	14	47	
B2737512	HOLDER-ACTUATOR	0→1	1	16	12	

7.FRAME ASSEMBLY (B273)

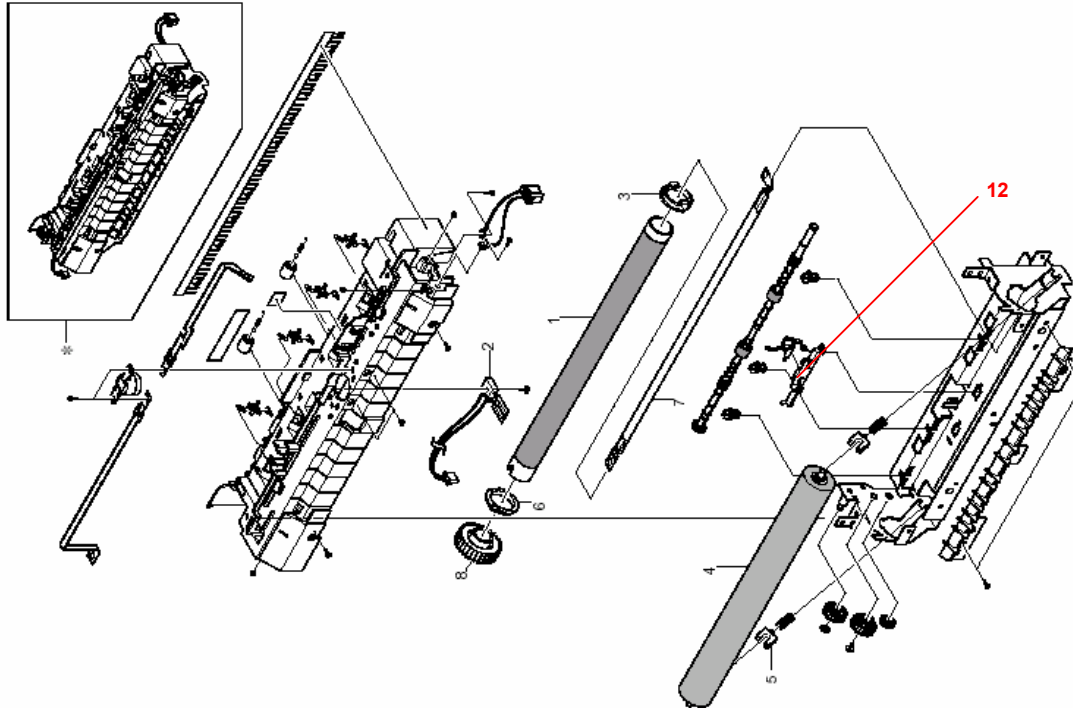


Model: Model CM-C1

Date: 15-Jun-07

No.: MB273014

8.FUSING UNIT ASSEMBLY (B273)



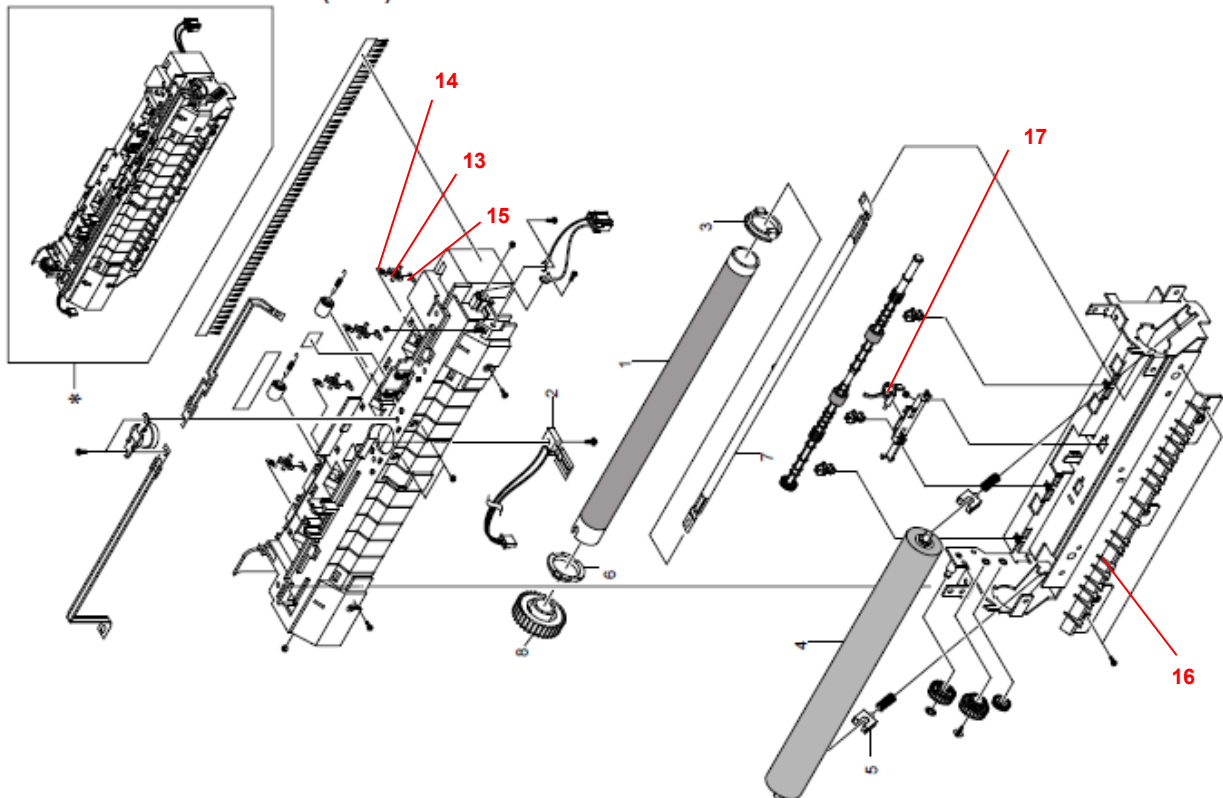
Model: Model CM-C1		Date: 1-Nov-07	No.: MB273015
Modified Article: Parts in Fusing unit		Prepared by: T. Shintani	
From: 1st Tech. Support Sec. Service Support Dept.			
Reason for Modification:	<input checked="" type="checkbox"/> Parts catalog correction <input type="checkbox"/> Vendor change <input type="checkbox"/> Other <input type="checkbox"/> To facilitate assembly <input type="checkbox"/> To improve reliability <input type="checkbox"/> To meet standards <input type="checkbox"/> Part standardization <input type="checkbox"/> Product Safety ()		

Change: These parts were added.

Reason: Requests from the field.

NEW Part	Description	Q'ty	Int	Page	Index	Note
B2739800	Stripper Pole - Fusing unit	0→1	1	16	13	
B2739801	Spring - Stripper pole	0→1	1	16	14	
B2739802	Plate - Stripper pole	0→1	1	16	15	
B2739803	Guide Plate - fusing	0→1	1	16	16	
B2739804	Actuator - Fusing	0→1	1	16	17	

8.FUSING UNIT ASSEMBLY (B273)



Model: Model CM-C1		Date: 12-Feb-08	No.: MB273016
Modified Article: Mainboard		Prepared by: T. Shintani	
From: 1st Tech. Support Sec. Service Support Dept.			
Reason for Modification:	<input checked="" type="checkbox"/> Parts catalog correction <input type="checkbox"/> Vendor change <input type="checkbox"/> Other <input type="checkbox"/> To facilitate assembly <input type="checkbox"/> To improve reliability <input type="checkbox"/> To meet standards <input type="checkbox"/> Part standardization <input type="checkbox"/> Product Safety ()		

OLD Part	NEW Part	Description	Q'ty	Int	Page	Index	Note
B2739652	B2739750	Mainboard	1→1	O/O	3	3	-

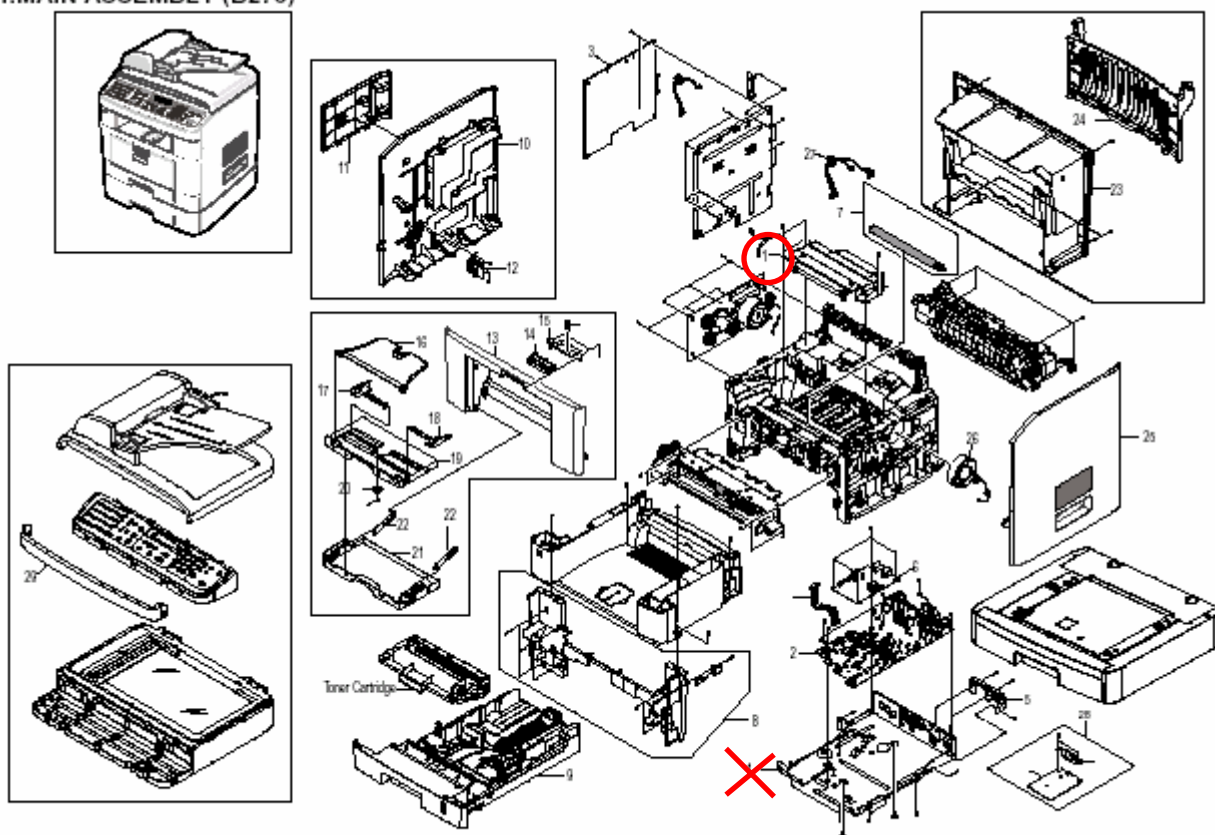
Change: A resistor was added to the main board.

Reason: To increase the tolerance of the USB port to AC voltage surges.

Model: Model CM-C1		Date: 13-Feb-08	No.: MB273017
Modified Article: PART CATALOG CORRECTION		Prepared by: T. Shintani	
From: 1st Tech. Support Sec. Service Support Dept.			
Reason for Modification:	<input checked="" type="checkbox"/> Parts catalog correction <input type="checkbox"/> Vendor change <input type="checkbox"/> Other <input type="checkbox"/> To facilitate assembly <input type="checkbox"/> To improve reliability <input type="checkbox"/> To meet standards <input type="checkbox"/> Part standardization <input type="checkbox"/> Product Safety ()		

Change/Reason: The illustration below was corrected (callout #1 marked with an "X" was deleted).

1.MAIN ASSEMBLY (B273)



Reissued: 4-Mar-08

Model: Model CM-C1	Date: 14-Feb-08	No.: MB273018a
--------------------	-----------------	----------------

MB Correction

The items in ***bold italics*** have been corrected or added.

Modified Article: Antistatic Brush		Prepared by: T. Shintani	
From: 1st Technical Support Sec. Service Support Dept.			
Reason for Modification:	<input checked="" type="checkbox"/> Parts catalog correction <input type="checkbox"/> To facilitate assembly <input type="checkbox"/> Part standardization	<input type="checkbox"/> Vendor change <input type="checkbox"/> To improve reliability <input type="checkbox"/> Other	<input type="checkbox"/> To meet standards ()
Modification Schedule:	From first mass production.		

Model CM-C1

NEW Part	Description	Q'ty	Int	Page	Index	Note
<i>G1861344</i>	Antistatic Brush	0→1	-	19	14	-

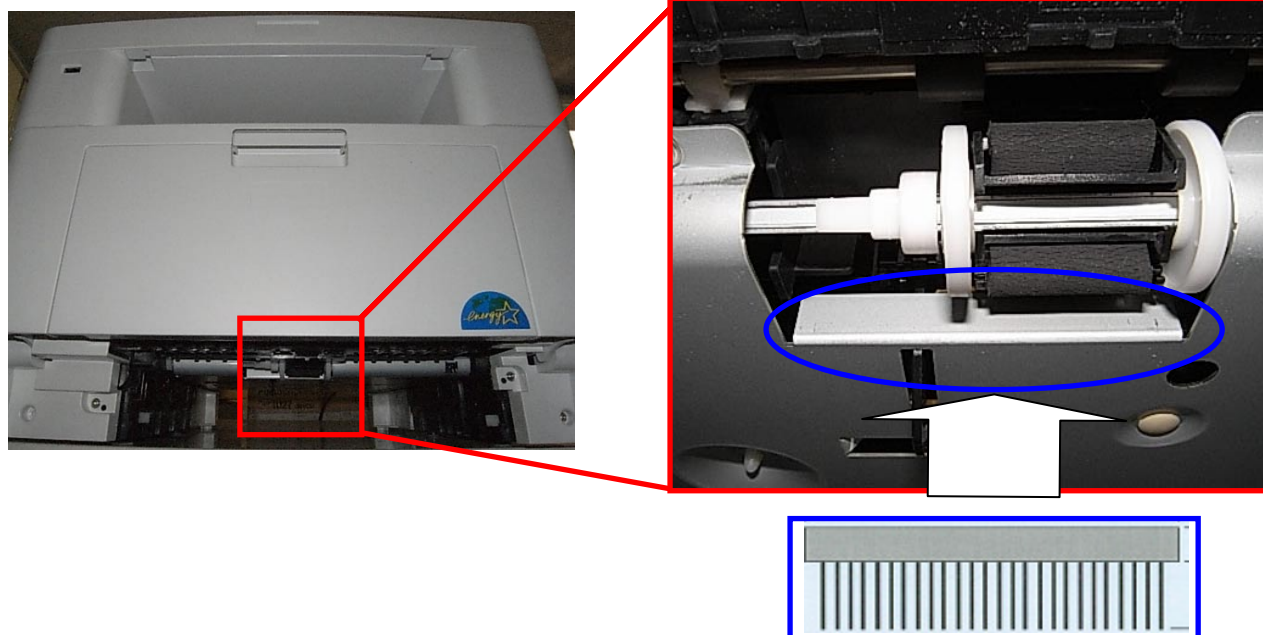
Model CM-C1L

NEW Part	Description	Q'ty	Int	Page	Index	Note
<i>G1861344</i>	Antistatic Brush	0→1	-	19	14	-

Change: An anti-static brush was added.

Reason: To minimize the effect of electrical noise on the fusing unit.

Note: This brush reduces electrostatic buildup on the paper at the time of paper feed.

Attachment position:


Model: Model CM-C1		Date: 14-Feb-08	No.: MB273019
Modified Article: PART CATALOG CORRECTION		Prepared by: T. Shintani	
From: 1st Tech. Support Sec. Service Support Dept.			
Reason for Modification:	<input checked="" type="checkbox"/> Parts catalog correction <input type="checkbox"/> Vendor change <input type="checkbox"/> Other <input type="checkbox"/> To facilitate assembly <input type="checkbox"/> To improve reliability <input type="checkbox"/> To meet standards <input type="checkbox"/> Part standardization <input type="checkbox"/> Product Safety ()		

Old Part Number	New Part Number	Description	Q'ty	Page	Index
B2737506	G9601016	SPRNG - CASSETTE	2	23	11
B2739545	G9601174	EXIT ROLLER	1	16	39
B2739555	G9601194	PRESSURE SPRNG	1	23	7
B2739556	G9601127	LEFT SIDE FENCE	1	23	8
B2739557	G9601128	RIGHT SIDE FENCE	1	23	9
B2739563	G9601083	SUB TRAY	1	3	19
B2739564	G9601196	PNION GEAR	1	3	20
B2739576	G9601200	WASHER	1	16	36
B2739578	G9601010	E-RNG	1	16	37
B2739664	G9601095	KNOB - FRONT COVER	1	3	14
B2739665	G9601075	LOCK KNOB HOLDER	1	3	15
B2739676	G9601110	ADFDRIVE ROLLER	1	8	4
B2739677	G9601147	SENSOR ACTUATOR	1	8	5
B2739678	G9601145	SENSOR ACTUATOR	1	8	6
B2739679	G9601146	SENSOR ACTUATOR	1	8	7
B2739680	G9601109	ADF EXIT ROLLER	1	8	8
B2739681	G9601134	WHITE SHEET	1	8	9
B2739683	G9601028	STEPPNG MOTOR - DC 5.2W	1	8	11
B2739685	G9601319	MPPELLER-ADF	1	8	13
B2739691	G9601197	PINCH ROLLER	1	8	19
B2739701	G9601025	PLATEN GLASS	1	12	2
B2739703	G9601021	HOLDER - PLATEN GLASS	1	12	4
B2739706	G9601018	TMING BELT	1	12	7
B2739707	G9601135	SENSOR LEVER	1	12	8
B2739710	G9601162	SCANNER MOTOR - DC 18W	1	12	11
B2739711	G9601205	STEPPNG MOTOR - DC 18W	1	12	12
B2739715	G9601157	PCB - USB HOST	1	14	5
B2739719	G9601176	SPRNG CLUTCH	1	16	33
B2739728	G9601180	PICK-UP ROLLER	1	21	3
B2739729	G9601357	PICK-UP ROLLER SPONGE	1	21	4

Change/Reason: Parts standardization with Model CM-C2.

Model: Model CM-C1		Date: 21-Apr-08	No.: MB273020
Modified Article: PART CATALOG CORRECTION		Prepared by: T. Shintani	
From: 1st Tech. Support Sec. Service Support Dept.			
Reason for Modification:	<input checked="" type="checkbox"/> Parts catalog correction <input type="checkbox"/> Vendor change <input type="checkbox"/> Other <input type="checkbox"/> To facilitate assembly <input type="checkbox"/> To improve reliability <input type="checkbox"/> To meet standards <input type="checkbox"/> Part standardization <input type="checkbox"/> Product Safety ()		

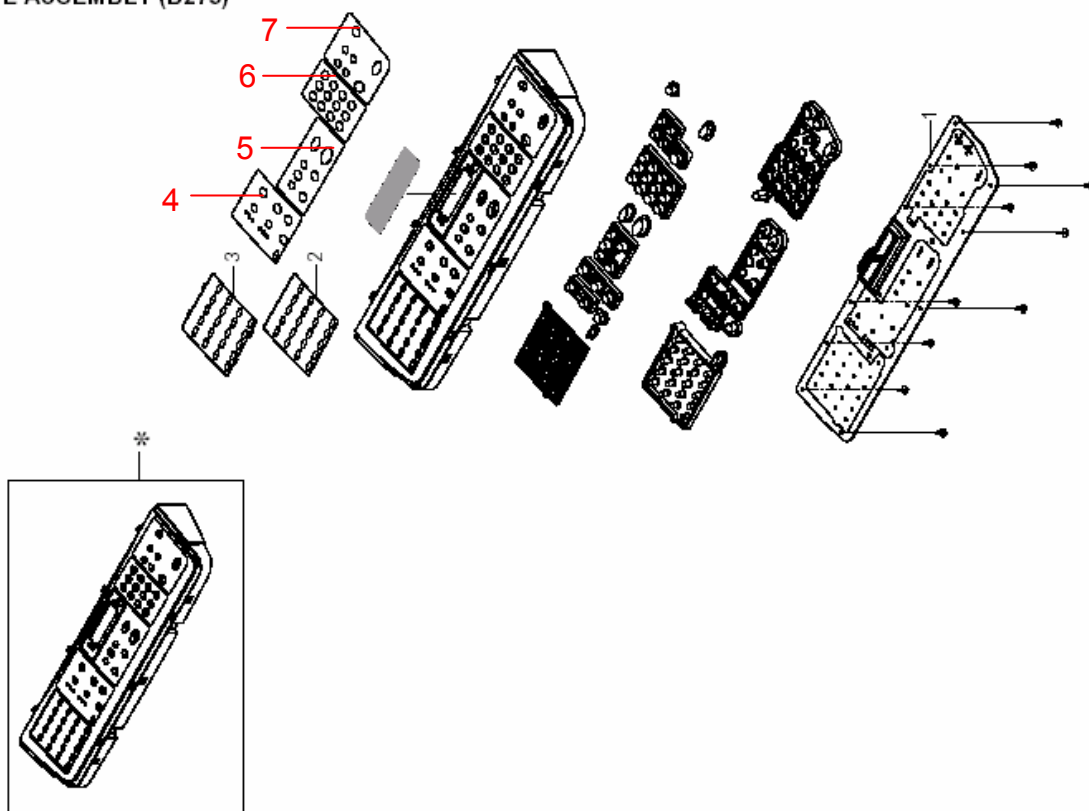
OLD Part Number	NEW Part Number	DESCRIPTION	Q'TY	PAGE	INDEX
G1449664	G9601084	EXTENSION - BYPASS	1	3	16
G1449667	G9601083	DOCUMENT FEEDER	1	3	19
G1449668	G9601196	GEAR - DOCUMENT	1	3	20
G1449670	G9601082	TRAY LINE - BYPASS	1	3	22
G1449687	G9601062	TRANSFER GUIDE UP	1	15	1
G1449690	G9601155	MFC TERMINAL	1	15	5
G1449691	G9601143	PLATE GUIDE RIGHT	1	15	8
G1449692	G9601079	SPRING - GUIDE	1	15	9
G1449693	G9601142	PLATE GUIDE LEFT	1	15	10
G1449696	G9601107	FEED ROLLER	1	15	14
G1449697	G9601133	BUSHING - FEED	1	15	15
G1449699	G9601129	EARTH - TRANSFER	1	15	19
G1449700	G9601069	HOLDER - QUENCHIN	1	15	20
G1449701	G9601055	SPRING - TRANSFER	1	15	23
G1449702	G9601060	BUSHING - TRANSFER	1	15	25
G1449703	G9601058	BUSHING - IDLE	1	15	27
G1449704	G9601099	CAM - PICKUP	1	15	28
G1449705	G9601032	SOLENOID - PICKUP	1	15	29
G1449710	G9601140	IDLE - PICKUP	1	15	44
G1449711	G9601066	BEARING - EXIT	1	15	36
G1449712	G9601097	GEAR - EXIT ROLLER	1	15	37
G1449713	G9601174	RACK - EXIT ROLLER	1	15	39
G1449715	G9601026	COOLING FAN	1	3	26
G1449718	G9601059	BUSHING - MP ASS'Y	1	15	45
G1449719	G9601070	STOPPER PICK - UP	1	15	43
G1449720	G9601072	FRICTION PAD HOLDER	1	19	6
G1449721	G9601101	IDEAL GEAR MA ASS'Y	1	19	7
G1449724	G9601153	FRICTION PAD	1	19	12
G1449740	G9601177	FRICTION PAD ASS'Y	1	21	3
G1449741	G9601078	SPRING - FRICTION	1	21	4
G1449744	G9601067	RUBBER FOOT BACK	1	15	3
G1449748	G9601311	FEED SHAFT	1	15	16
G1449749	G9601102	SHAFT PICK-UP ROLLER	1	15	42
G1449750	G9601141	CASSETTE COCKER	1	15	6

Change/Reason: Parts standardization with Model CM-C2.

Model: Model CM-C1		Date: 23-May-08	No.: MB273021
Modified Article: Operation panel sheet		Prepared by: T. Shintani	
From: 1st Tech. Support Sec. Service Support Dept.			
Reason for Modification:	<input checked="" type="checkbox"/> Parts catalog correction <input type="checkbox"/> Vendor change <input type="checkbox"/> Other <input type="checkbox"/> To facilitate assembly <input type="checkbox"/> To improve reliability <input type="checkbox"/> To meet standards () <input type="checkbox"/> Part standardization <input type="checkbox"/> Product Safety		

NEW Part	Description	Q'ty	Int	Page	Index	Note
B2739808	Sheet-Copy (English)	1	-	9	4	-
B2739807	Sheet-Start (English)	1	-	9	5	-
B2739806	Sheet-Tel (English)	1	-	9	6	-
B2739809	Sheet-Fax (English)	1	-	9	7	-

4.OPE ASSEMBLY (B273)



Change: These parts were added.

Reason: Requests from the field.

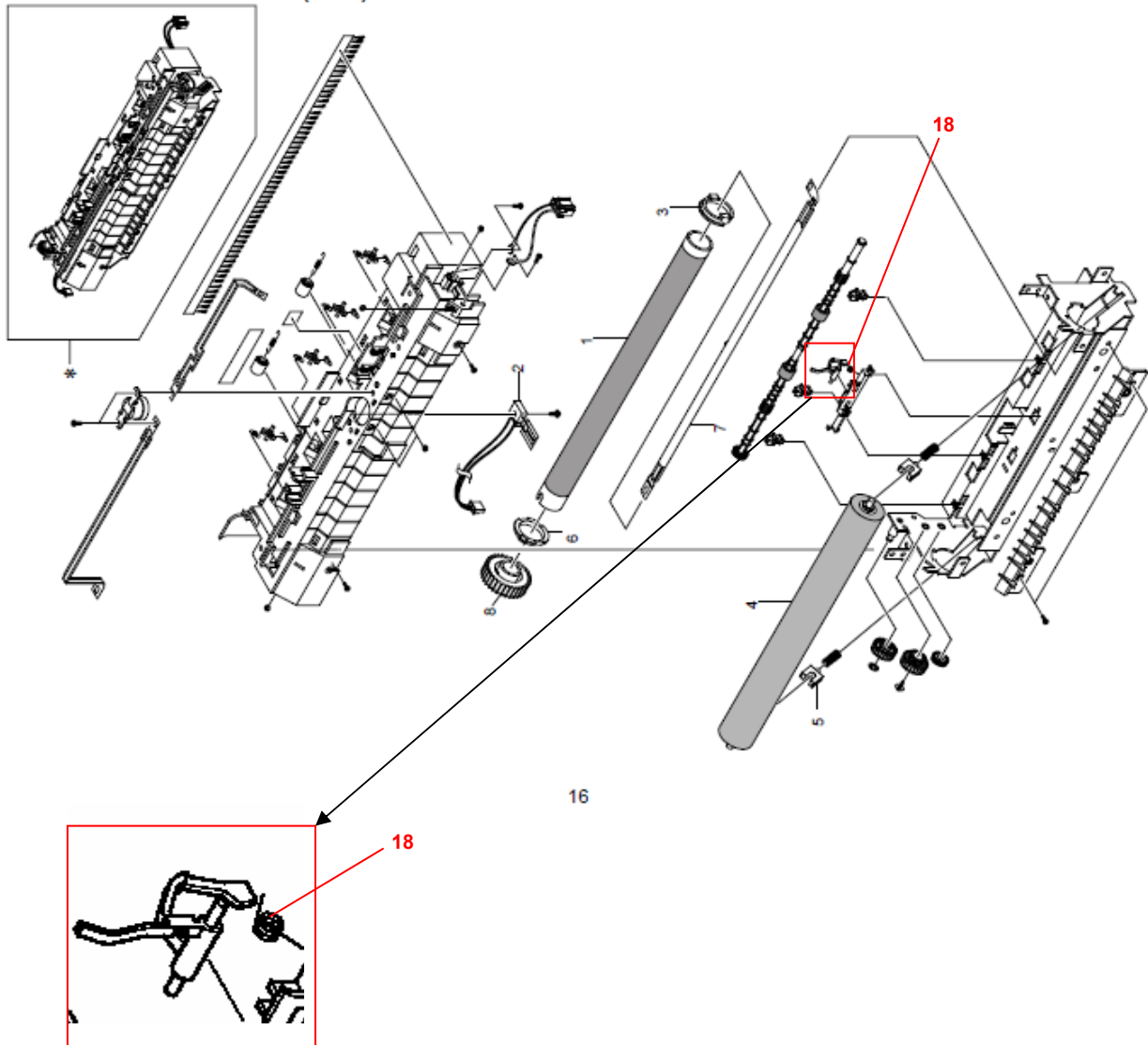
Model: Model CM-C1		Date: 3-Jun-08	No.: MB273022
Modified Article: Parts in Fusing unit		Prepared by: T. Shintani	
From: 1st Tech. Support Sec. Service Support Dept.			
Reason for Modification:	<input checked="" type="checkbox"/> Parts catalog correction <input type="checkbox"/> Vendor change <input type="checkbox"/> Other <input type="checkbox"/> To facilitate assembly <input type="checkbox"/> To improve reliability <input type="checkbox"/> To meet standards <input type="checkbox"/> Part standardization <input type="checkbox"/> Product Safety ()		

Change: This part was added.

Reason: Requests from the field.

NEW Part	Description	Q'ty	Int	Page	Index	Note
B1739694	SPRING-TS	0→1	1	17	18	

8.FUSING UNIT ASSEMBLY (B273)



Model: Model CM-C1		Date: 7-Jul-08	No.: MB273023
Modified Article: Gears		Prepared by: T. Shintani	
From: 1st Tech. Support Sec. Service Support Dept.			
Reason for Modification:	<input checked="" type="checkbox"/> Parts catalog correction <input type="checkbox"/> Vendor change <input type="checkbox"/> Other <input type="checkbox"/> To facilitate assembly <input type="checkbox"/> To improve reliability <input type="checkbox"/> To meet standards <input type="checkbox"/> Part standardization <input type="checkbox"/> Product Safety ()		

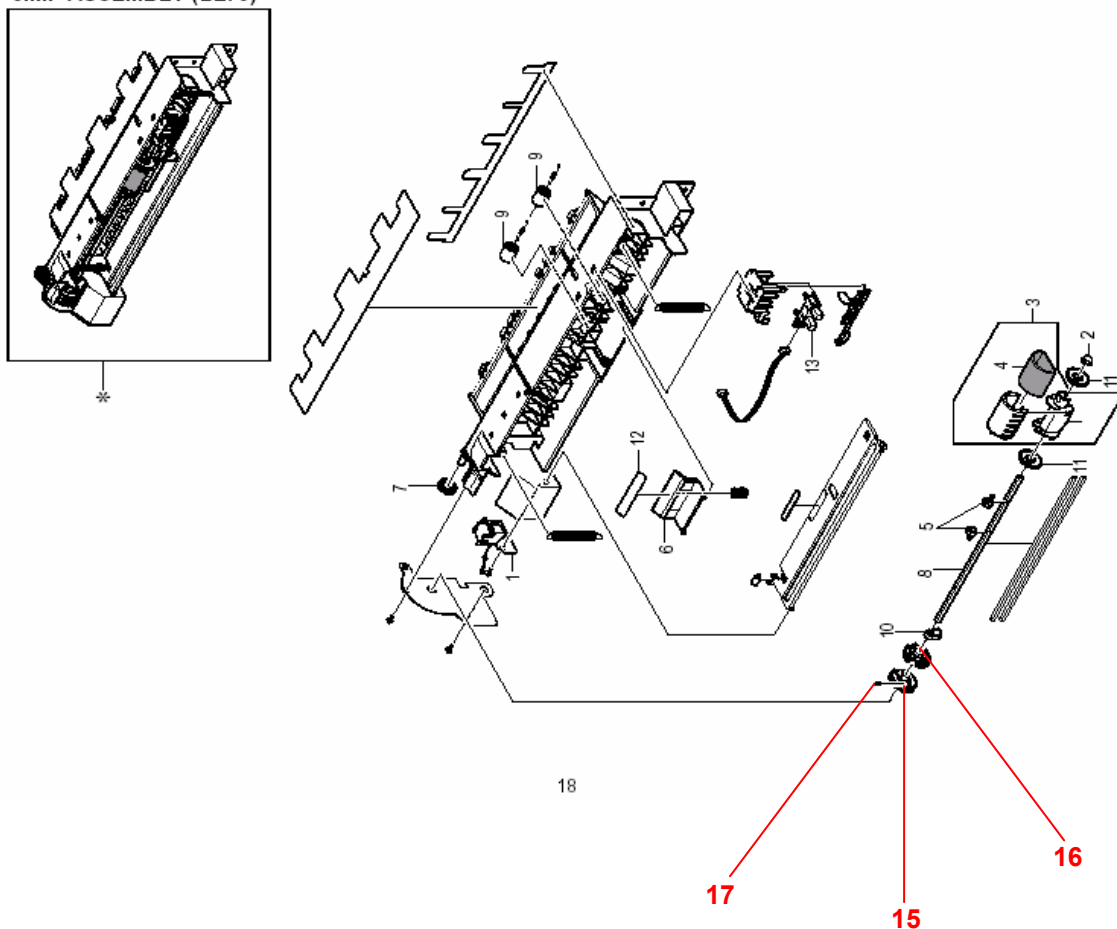
Model CM-C1

NEW Part	Description	Q'ty	Int	Page	Index	Note
G9601112	GEAR - PICK-UP ROLLER	0→1	-	19	15	-
G9601111	GEAR - HOLDER	0→1	-	19	16	-
G9601387	PRESSURE SPRING	0→1	-	19	17	-

Change: These parts were added.

Reason: Requests from the field.

9.MP ASSEMBLY (B273)



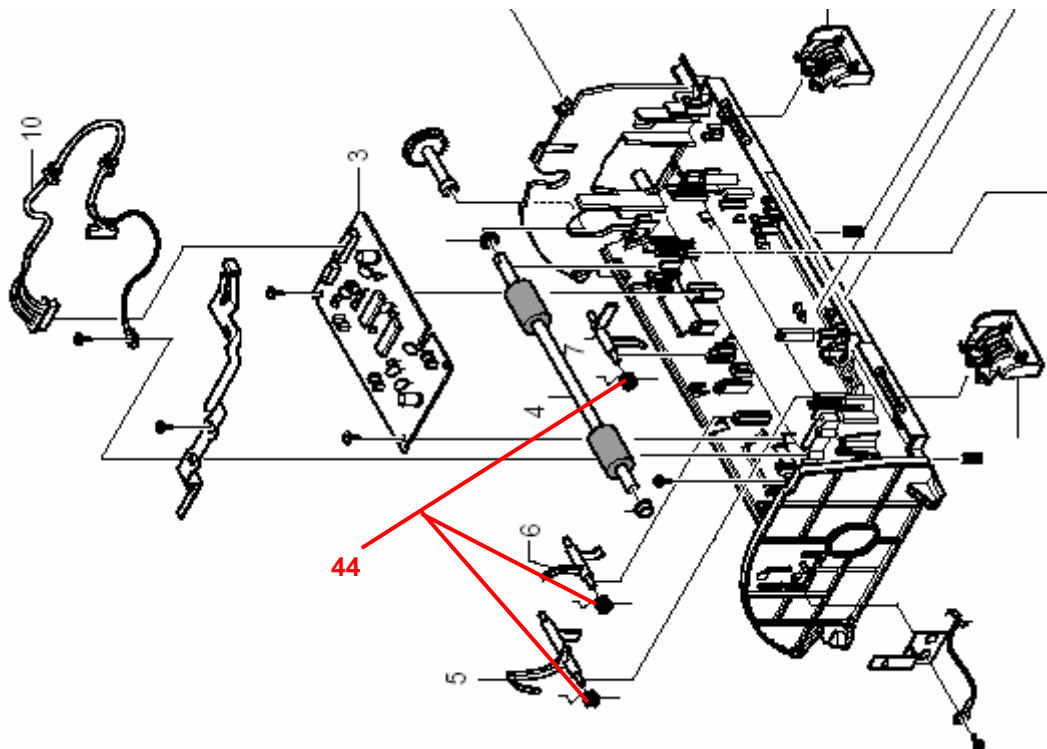
Model: Model CM-C1		Date: 12-Sep-08	No.: MB273024
Modified Article: Spring		Prepared by: T. Shintani	
From: 1st Tech. Support Sec. Service Support Dept.			
Reason for Modification:	<input checked="" type="checkbox"/> Parts catalog correction <input type="checkbox"/> Vendor change <input type="checkbox"/> Other <input type="checkbox"/> To facilitate assembly <input type="checkbox"/> To improve reliability <input type="checkbox"/> To meet standards <input type="checkbox"/> Part standardization <input type="checkbox"/> Product Safety ()		

Model CM-C1

NEW Part	Description	Q'ty	Int	Page	Index	Note
G9601020	SPRING	0→1	-	6	44	-

Change: This part was added.

Reason: Requests from the field.



Model: Model CM-C1		Date:22 -Dec-08	No.: MB273025
Modified Article: MAIN ASSEMBLY		Prepared by: Y. Gaman	
From: 1st Tech. Support Sec. Service Support Dept.			
Reason for Modification:	<input checked="" type="checkbox"/> Parts catalog correction <input type="checkbox"/> Vendor change <input type="checkbox"/> Other <input type="checkbox"/> To facilitate assembly <input type="checkbox"/> To improve reliability <input type="checkbox"/> To meet standards <input type="checkbox"/> Part standardization <input type="checkbox"/> Product Safety ()		

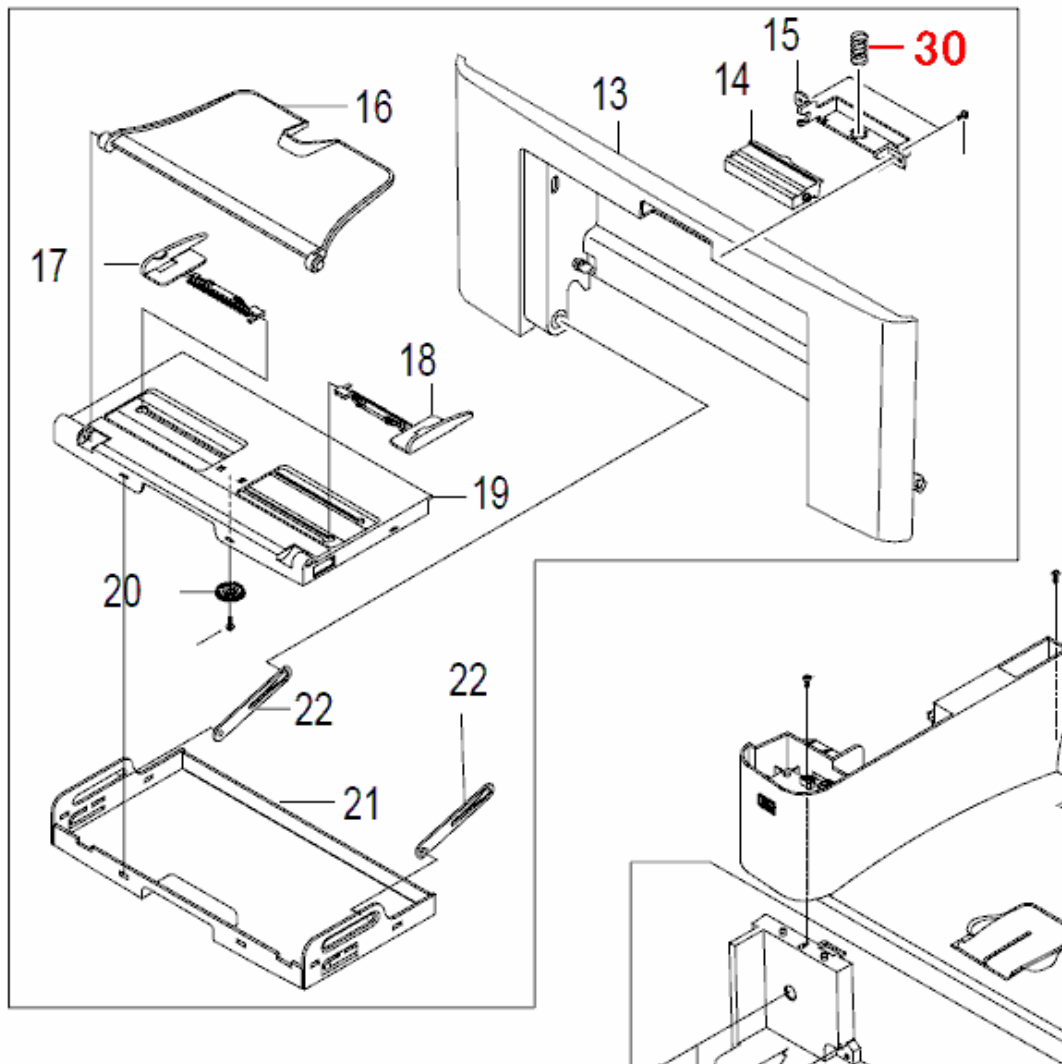
Model CM-C1

NEW Part	Description	Q'ty	Int	Page	Index	Note
G9601195	PRESSURE SPRING	0→1	-	3	30	-

Change: This part was added.

Reason: Requests from the field.

1.MAIN ASSEMBLY (B273)





Part Change Information List

Date: July 31, 2009

Model	Code	PCIL Nr.	PCIL Correction	Old part number	New part number	Description	Old Q'ty	New Q'ty	Int	3DPC	Page	Index	Set	Set Int	RTB	Note	Ref. Nr.
CM-C1	B273	200907			G1449752	EXIT ROLLER	0	4			15	48			Y		V0901143



Part Change Information List

Date: August 31, 2009

Model	Code	PCIL Nr.	PCIL Correction	Old part number	New part number	Description	Old Q'ty	New Q'ty	Int	3DPC	Page	Index	Set	Set Int	RTB	Note	Ref. Nr.	ECN Nr.
CM-C1	B273	200908		B2739582		COVER - SCAN LOWER	1	0			15	13			Y		V0901145	
CM-C1	B273	200908			B2739810	SCANNER UNIT	0	1			15	*			Y		V0901145	



Part Change Information List

Date: November 30, 2009

Model	Code	PCIL Nr.	PCIL Correction	Old part number	New part number	Description	Old Q'ty	New Q'ty	Int	3DPC	Page	Index	Set	Set Int	RTB	Note	Ref. Nr.	ECN Nr.
CM-C1	B273	200911		B2739530	B2739583	ADF PICK - UP ASS'Y	1	1	O/O		7	25					V0804694	



Part Change Information List

Date: February 26, 2010

Model	Code	PCIL Nr.	PCIL Correction	Old part number	New part number	Description	Old Q'ty	New Q'ty	Int	3DPC	Page	Index	Set	Set Int	RTB	Note	Ref. Nr.	ECN Nr.
CM-C1	B273	201002		B2739651	B2739811	PSU - CHN:JC44-00071B	1	1	X/O		3	2				For CHINA	V0903213	



Part Change Information List

Date: May 31, 2010

Model	Code	PCIL Nr.	PCIL Correction	Old part number	New part number	Description	Old Q'ty	New Q'ty	Int	3DPC	Page	Index	Set	Set Int	RTB	Note	Ref. Nr.	ECN Nr.
CM-C1	B273	201005		G9601079	G1861203	SPRING - GUIDE:JC6170932A	1	1	O/O		15	9					V1001047	



Part Change Information List

Date: Jun 30, 2010

Model	Code	PCIL Nr.	PCIL Correction	Old part number	New part number	Description	Old Q'ty	New Q'ty	Int	3DPC	Page	Index	Set	Set Int	RTB	Note	Ref. Nr.	ECN Nr.
CM-C1	B273	201006			B1739804	GEAR DRIVE16	0	1			17	20			RB273012		V1001156	
CM-C1	B273	201006			G1449609	GEAR 25/15	0	1			17	21			RB273012		V1001156	
CM-C1	B273	201006			G1449729	SPRING - BEARING	0	2			17	22			RB273012		V1001117	



Part Change Information List

Date: June 30, 2011

Model	Code	PCIL Nr.	PCIL Correction	Old part number	New part number	Description	Old Q'ty	New Q'ty	Int	3DPC	Page	Index	Set	Set Int	RTB	Note	Ref. Nr.	ECN Nr.
CM-C1	B273	201106		H9149724	G9601137	End Fense	1	1	O/O		21	2					V0700910	



Part Change Information List

Date: December 28, 2011

Model	Code	PCIL Nr.	PCIL Correction	Old part number	New part number	Description	Old Q'ty	New Q'ty	Int	3DPC	Page	Index	Set	Set Int	RTB	Note	Ref. Nr.	ECN Nr.
CM-C1	B273	201112		B8739654	B2739731	CASSETTE ASS'Y (ROHS)	1	1	X/O		3	9						