

Model: Model T-C1		Date: 20-Apr-04	No.: MB174001
Modified Article: Parts Catalog Correction		Prepared by: A.Ishiyama	
From: 1st Technical Support Sec. Service Support Dept.			
Reason for Modification:	<input checked="" type="checkbox"/> Parts catalog correction <input type="checkbox"/> To facilitate assembly <input type="checkbox"/> Part standardization	<input type="checkbox"/> Vendor change <input type="checkbox"/> To improve reliability	<input type="checkbox"/> To meet standards ()
Modification Schedule	The new part is available from the first mass production.		

Please apply the following correction to your Parts Catalogs.

Incorrect Part Number	Correct Part Number	Description	Q'ty	Int	Page	Index	Note
B1749740	B1749744	One Touch Key Sheet -English	1→1	- / -	6	15-1	

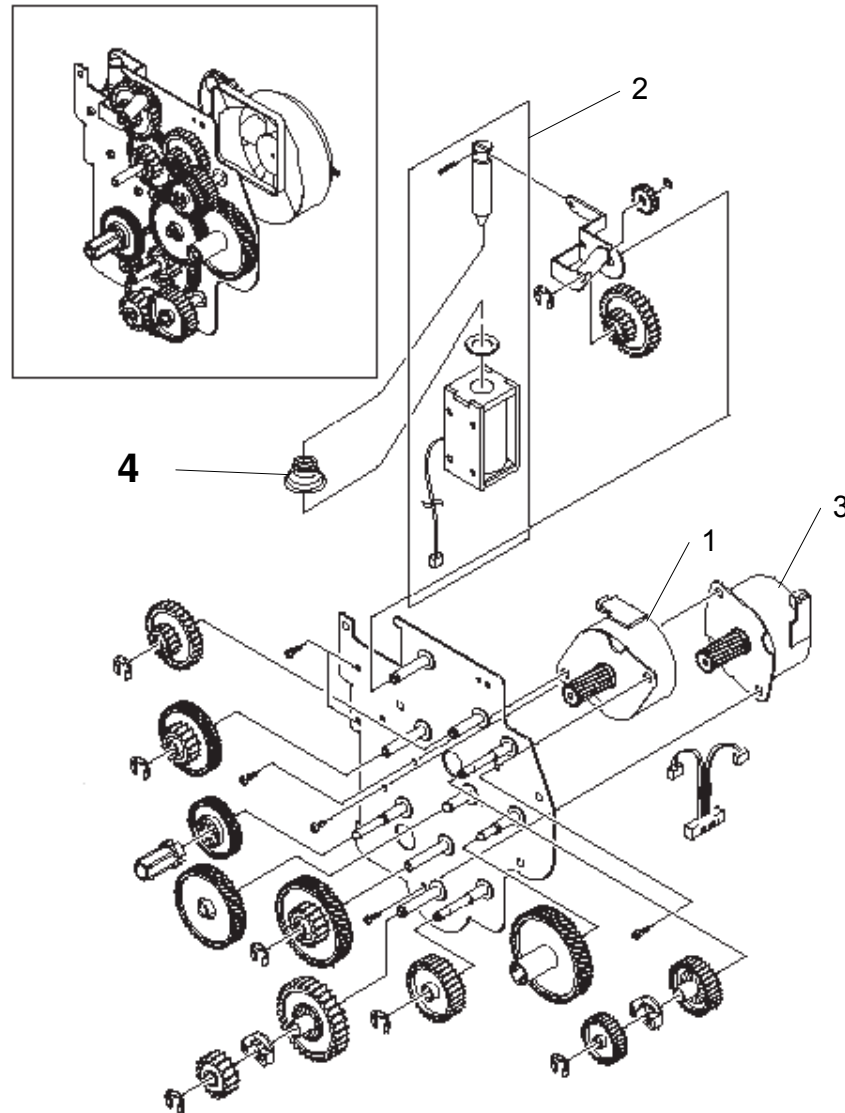
Model: Model T-C1		Date: 24-Jun-04	No.: MB174002
Modified Article: Parts Catalog Correction		Prepared by: A.Ishiyama	
From: 1st Technical Support Sec. Service Support Dept.			
Reason for Modification:	<input checked="" type="checkbox"/> Parts catalog correction <input type="checkbox"/> To facilitate assembly <input type="checkbox"/> Part standardization	<input type="checkbox"/> Vendor change <input type="checkbox"/> To improve reliability	<input type="checkbox"/> To meet standards ()
Modification Schedule	The new part is available from the first mass production.		

Please add the following to your Parts Catalogs (previously missing).

Note: See the illustration on the next page.

Incorrect Part Number	Correct Part Number	Description	Q'ty	Int	Page	Index	Note
	B1749745	Solenoid Spring - Duplex	0→1	- / -	16	4	

11. DRIVE ASSEMBLY



Index No.	Part No.	Description	Q'ty	B174 17
1	B1749714	STEPPING MOTOR - M49SP-2K	1	O
2	B1749717	SOLENOID - DUPLEX	1	O
3	B1749720	STEPPING MOTOR - M4PSP-2NK	1	O
4	B1749745	SOLENOID SPRING - DUPLEX	1	O

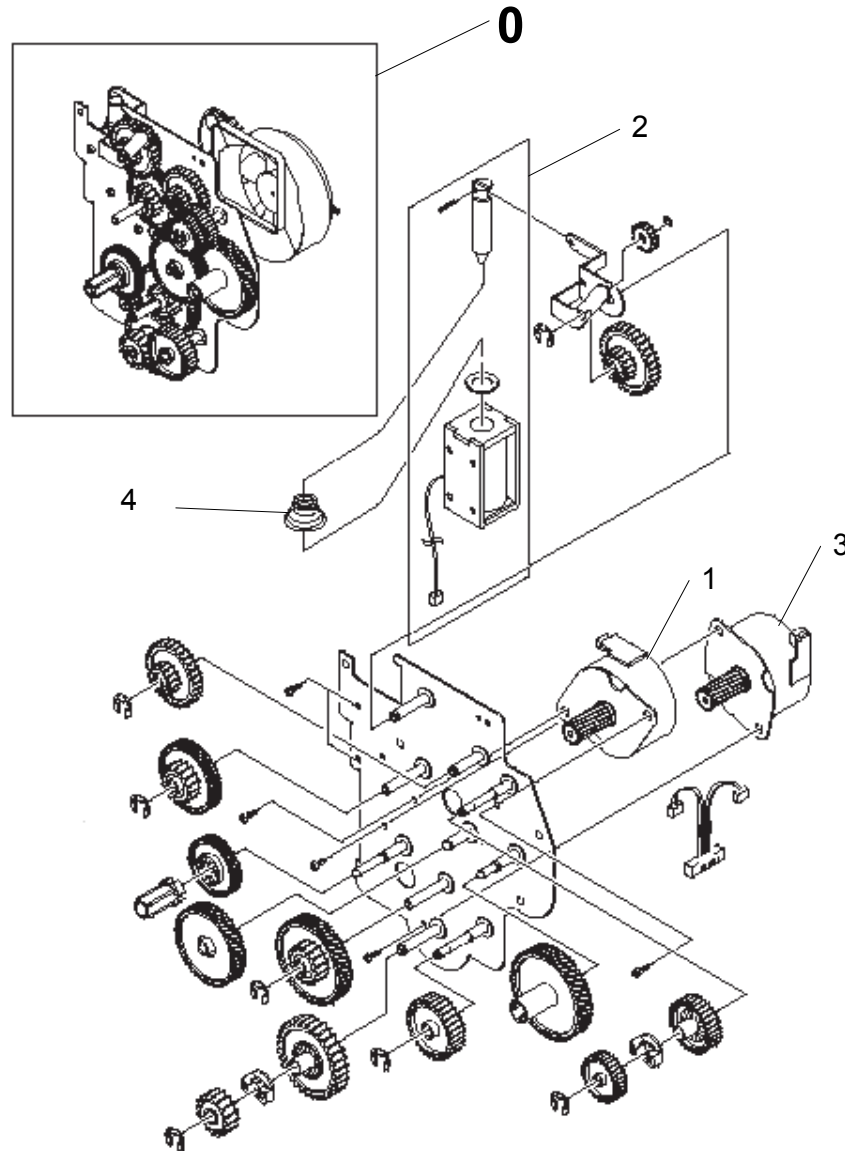
Model: Model T-C1		Date: 06-Jun-05	No.: MB174003
Modified Article: Parts Catalog Correction		Prepared by: T. Shintani	
From: 1st Technical Support Sec. Service Support Dept.			
Reason for Modification:	<input checked="" type="checkbox"/> Parts catalog correction <input type="checkbox"/> To facilitate assembly <input type="checkbox"/> Part standardization	<input type="checkbox"/> Vendor change <input type="checkbox"/> To improve reliability	<input type="checkbox"/> To meet standards ()
Modification Schedule	The new part is available from the first mass production.		

Please add the following to your Parts Catalogs (previously missing).

Note: Corresponding illustration on the next page.

OLD Part Number	NEW Part Number	Description	Q'ty	Int	Page	Index	Note
-	B1749746	Driver Ass'y	0→1	- / -	16	0	

11. DRIVE ASSEMBLY



Index No.	Part No.	Description	Q'ty	B174 17
0	B1749746	DRIVE ASS'Y	1	O
1	B1749714	STEPPING MOTOR - M49SP-2K	1	O
2	B1749717	SOLENOID - DUPLEX	1	O
3	B1749720	STEPPING MOTOR - M4PSP-2NK	1	O
4	B1749745	SOLENOID SPRING - DUPLEX	1	O

Model: Model T-C1		Date: 20-Jun-05	No.: MB174004
Modified Article: Paper End Actuator		Prepared by: A. Ishiyama	
From: 1st Technical Support Sec. Service Support Dept.			
Reason for Modification:	<input checked="" type="checkbox"/> Parts catalog correction <input type="checkbox"/> To facilitate assembly <input type="checkbox"/> Part standardization	<input type="checkbox"/> Vendor change <input type="checkbox"/> To improve reliability	<input type="checkbox"/> To meet standards ()
Modification Schedule	The new part is available from the first mass production.		

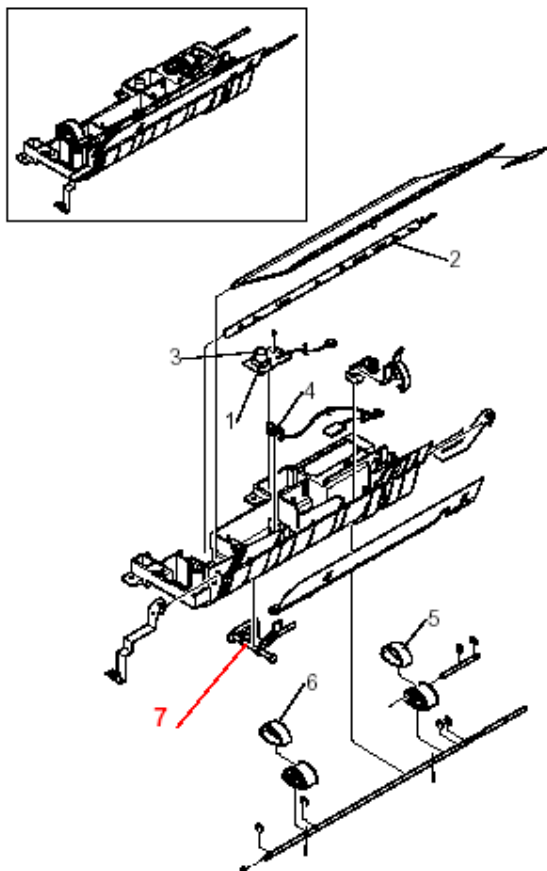
OLD Part Number	NEW Part Number	Description	Q'ty	Int	Page	Index	Note
-	B1749747	PAPER END ACTUATOR	0→1	- / -	15	7	

Change: This part was added.

Reason: A request was received from the field.

Note: See the illustration on the next page.

10. PICK-UP ASSEMBLY



B1740010.WMF

Index No.	Part No.	Description	Q'ty	B174 17
1	B1749703	TONER SENSOR - TX	1	O
2	B1749704	QUENCHING LAMP	1	O
3	B1749706	LENS - TONER SENSOR	1	O
4	B1749707	PAPER FEED AND END SENSORS	1	O
5	B1749709	RUBBER - PAPER PICK-UP : RIGHT	1	O
6	B1749710	RUBBER - PAPER PICK-UP : LEFT	1	O
7	B1749747	PAPER END ACTUATOR	1	O

Model: Model T-C1		Date: 17-Feb-06	No.: MB174005
Modified Article: Parts Catalog Correction		Prepared by: T. Shintani	
From: 1st Tech. Support Sec. Service Support Dept.			
Reason for Modification:	<input checked="" type="checkbox"/> Parts catalog correction <input type="checkbox"/> Vendor change <input type="checkbox"/> Other <input type="checkbox"/> To facilitate assembly <input type="checkbox"/> To improve reliability <input type="checkbox"/> To meet standards <input type="checkbox"/> Part standardization <input type="checkbox"/> Product Safety ()		

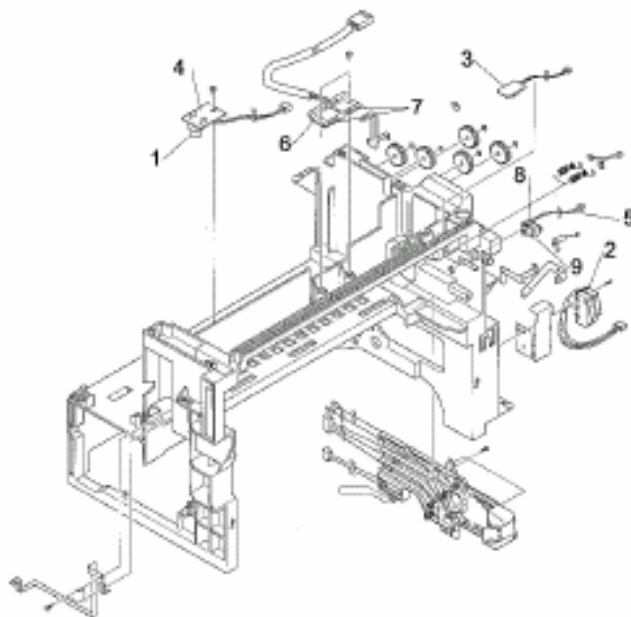
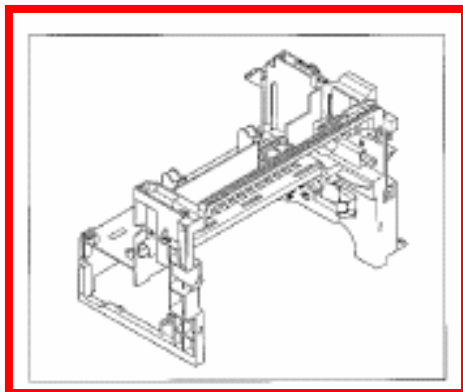
NEW Part Number	Description	Q'ty	Int	Page	Index	Note
B1749748	MAIN FRAME ASSY	1	- / -	18	0	-

Change: This part was added.

Reason: A request was received from the field.

Note: See the illustration as follows.

12. MAIN FLAME ASSEMBLY



Model: Model T-C1		Date: 6-Apr-06	No.: MB174006
Modified Article: Parts Catalog Correction		Prepared by: T. Shintani	
From: 1st Tech. Support Sec. Service Support Dept.			
Reason for Modification:	<input checked="" type="checkbox"/> Parts catalog correction <input type="checkbox"/> Vendor change <input type="checkbox"/> Other <input type="checkbox"/> To facilitate assembly <input type="checkbox"/> To improve reliability <input type="checkbox"/> To meet standards <input type="checkbox"/> Part standardization <input type="checkbox"/> Product Safety ()		

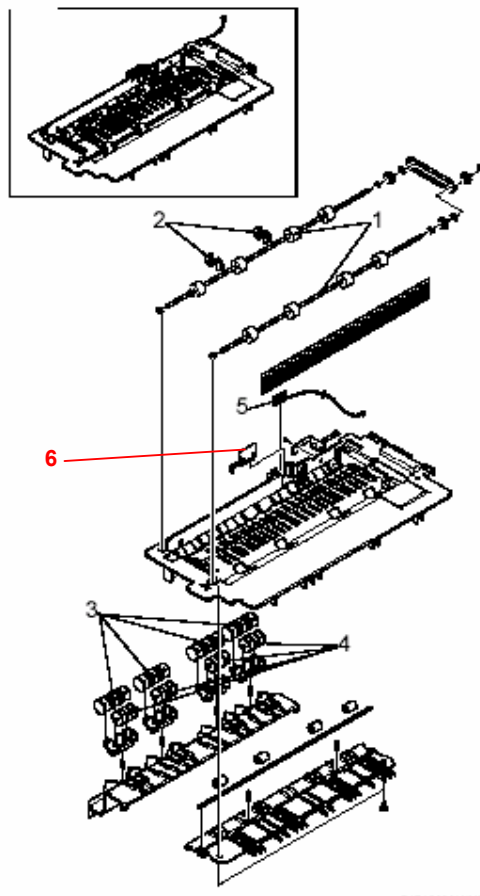
Part Number	Description	Q'ty	Page	Index	Note
B1749749	STACKING LEVER	1	11	6	-

Change: This part was added.

Reason: A request was received from the field.

Note: See the illustration as follows.

6. EXIT ASSEMBLY



Model: Model T-C1		Date: 11-Oct-06	No.: MB174007
Modified Article: Parts Catalog Correction		Prepared by: T. Shintani	
From: 1st Tech. Support Sec. Service Support Dept.			
Reason for Modification:	<input checked="" type="checkbox"/> Parts catalog correction <input type="checkbox"/> Vendor change <input type="checkbox"/> Other <input type="checkbox"/> To facilitate assembly <input type="checkbox"/> To improve reliability <input type="checkbox"/> To meet standards <input type="checkbox"/> Part standardization <input type="checkbox"/> Product Safety ()		

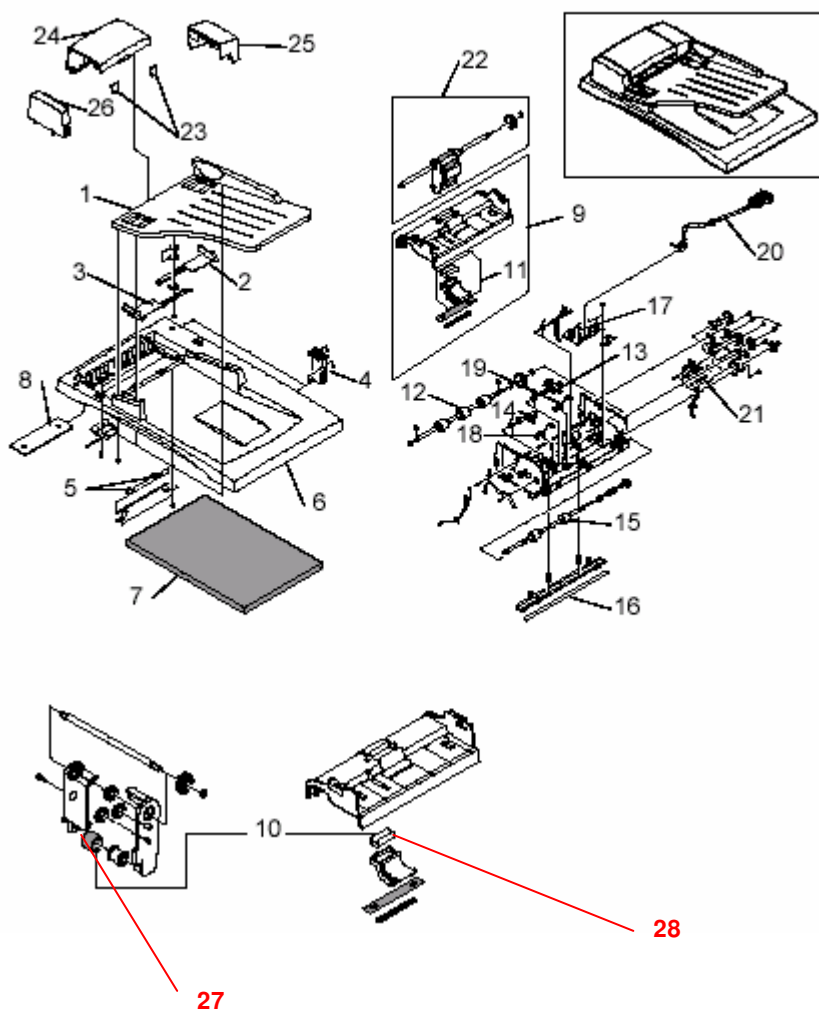
OLD Part Number	NEW Part Number	Description	Q'ty	Page	Index	Note
B1749750	B1749751	ADF Pick-Up Roller	1	8	27	
	B1749752	ADF Friction pad	1	8	28	-

Change: This part No. was changed.

Reason: There is a problem at the supplier.

Note: See the illustration as follows.

3. ADF ASSEMBLY



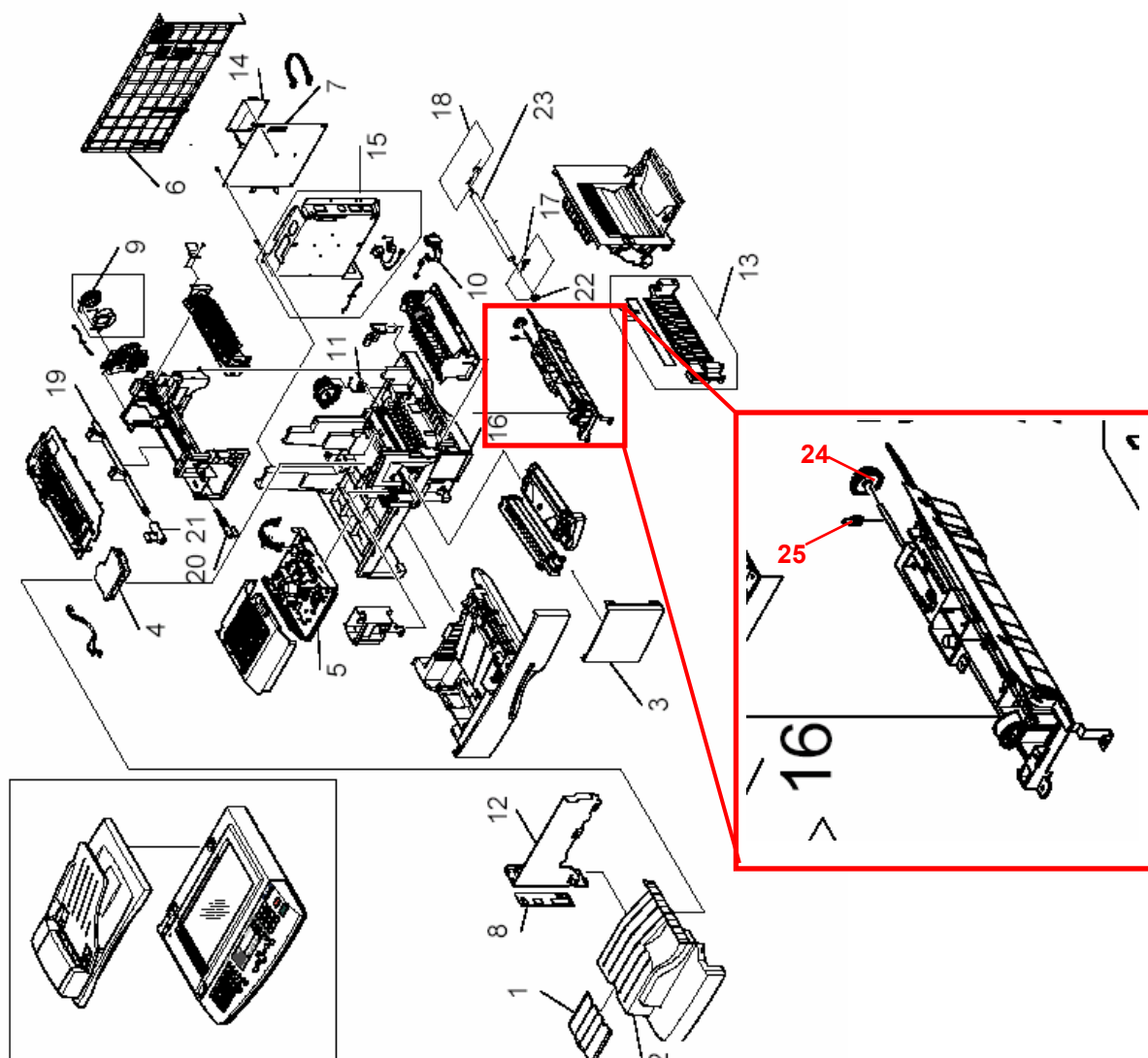
Model: Model T-C1		Date: 30-JAN-07	No.: MB174008
Modified Article: Parts Catalog Correction		Prepared by: T. Shintani	
From: 1st Tech. Support Sec. Service Support Dept.			
Reason for Modification:	<input checked="" type="checkbox"/> Parts catalog correction <input type="checkbox"/> Vendor change <input type="checkbox"/> Other <input type="checkbox"/> To facilitate assembly <input type="checkbox"/> To improve reliability <input type="checkbox"/> To meet standards <input type="checkbox"/> Part standardization <input type="checkbox"/> Product Safety ()		

NEW Part Number	Description	Q'ty	Page	Index	Note
B1747500	GEAR – PICK UP	1	3	24	
B1747501	SHAFT – PICK UP	1	3	25	-

Change: These parts were added.

Reason: Requests from the field.

1. MAIN ASSEMBLY



Model: Model T-C1		Date: 23-Feb-07	No.: MB174009
Modified Article: Parts Catalog Correction		Prepared by: T. Shintani	
From: 1st Tech. Support Sec. Service Support Dept.			
Reason for Modification:	<input checked="" type="checkbox"/> Parts catalog correction <input type="checkbox"/> Vendor change <input type="checkbox"/> Other <input type="checkbox"/> To facilitate assembly <input type="checkbox"/> To improve reliability <input type="checkbox"/> To meet standards <input type="checkbox"/> Part standardization <input type="checkbox"/> Product Safety ()		

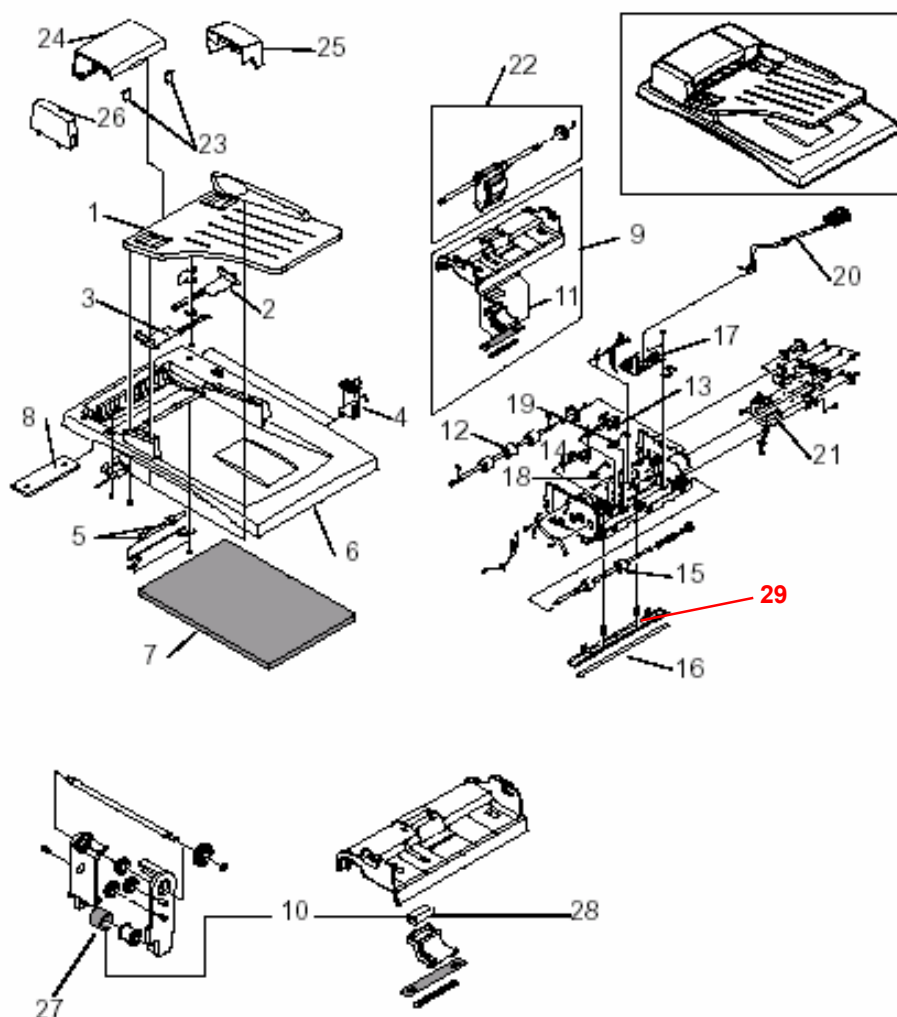
NEW Part Number	Description	Q'ty	Page	Index	Note
B1747502	WHITE BAR	1	8	29	-

Change: This part was added.

Reason: Requests from the field.

3. ADF ASSEMBLY

Rev. 11/30/2006



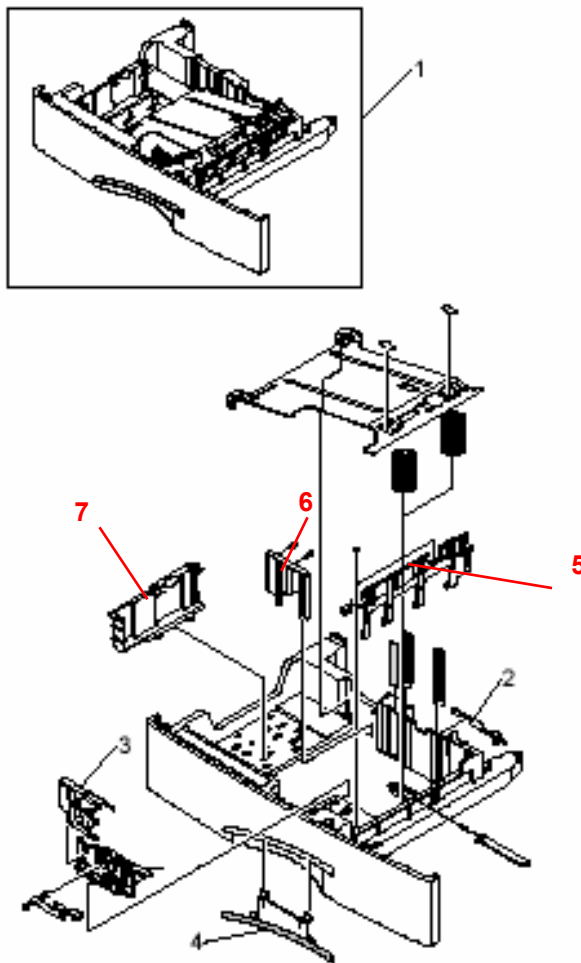
Model: Model T-C1		Date: 4-Oct-07	No.: MB174010
Modified Article: Parts Catalog Correction		Prepared by: T. Shintani	
From: 1st Tech. Support Sec. Service Support Dept.			
Reason for Modification:	<input checked="" type="checkbox"/> Parts catalog correction <input type="checkbox"/> Vendor change <input type="checkbox"/> Other <input type="checkbox"/> To facilitate assembly <input type="checkbox"/> To improve reliability <input type="checkbox"/> To meet standards <input type="checkbox"/> Part standardization <input type="checkbox"/> Product Safety ()		

NEW Part Number	Description	Q'ty	Page	Index	Note
B1749753	GUIDE – FRONT	1	10	5	-
B1749754	GUIDE – SUB	1	10	6	-
B1749755	GUIDE - REAR	1	10	7	-

Change: These parts were added.

Reason: Requests from the field.

5. CASSETTE ASSEMBLY



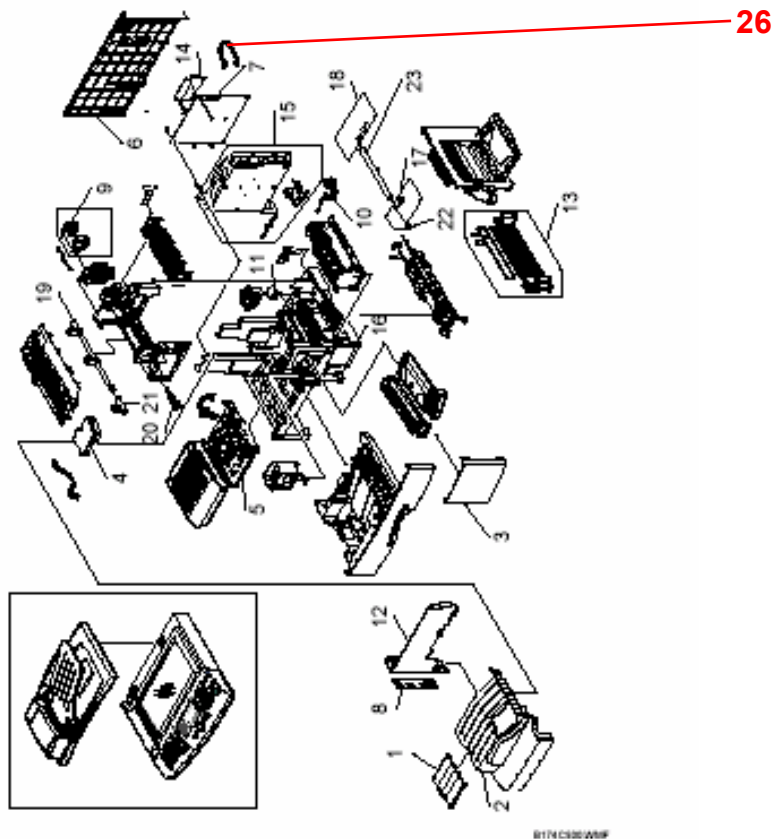
Model: Model T-C1		Date: 12-Feb-08	No.: MB174011
Modified Article: Parts Catalog Correction		Prepared by: T. Shintani	
From: 1st Tech. Support Sec. Service Support Dept.			
Reason for Modification:	<input checked="" type="checkbox"/> Parts catalog correction <input type="checkbox"/> Vendor change <input type="checkbox"/> Other <input type="checkbox"/> To facilitate assembly <input type="checkbox"/> To improve reliability <input type="checkbox"/> To meet standards <input type="checkbox"/> Part standardization <input type="checkbox"/> Product Safety ()		

NEW Part Number	Description	Q'ty	Page	Index	Note
B1749756	HARNESS - LIU	1	3	26	-

Change: This part was added.

Reason: Requests from the field.

1. MAIN ASSEMBLY



Model: Model T-C1		Date: 22-Aug-08	No.: MB174012
Modified Article: Parts Catalog Correction		Prepared by: T. Shintani	
From: 1st Tech. Support Sec. Service Support Dept.			
Reason for Modification:	<input checked="" type="checkbox"/> Parts catalog correction <input type="checkbox"/> Vendor change <input type="checkbox"/> Other <input type="checkbox"/> To facilitate assembly <input type="checkbox"/> To improve reliability <input type="checkbox"/> To meet standards <input type="checkbox"/> Part standardization <input type="checkbox"/> Product Safety ()		

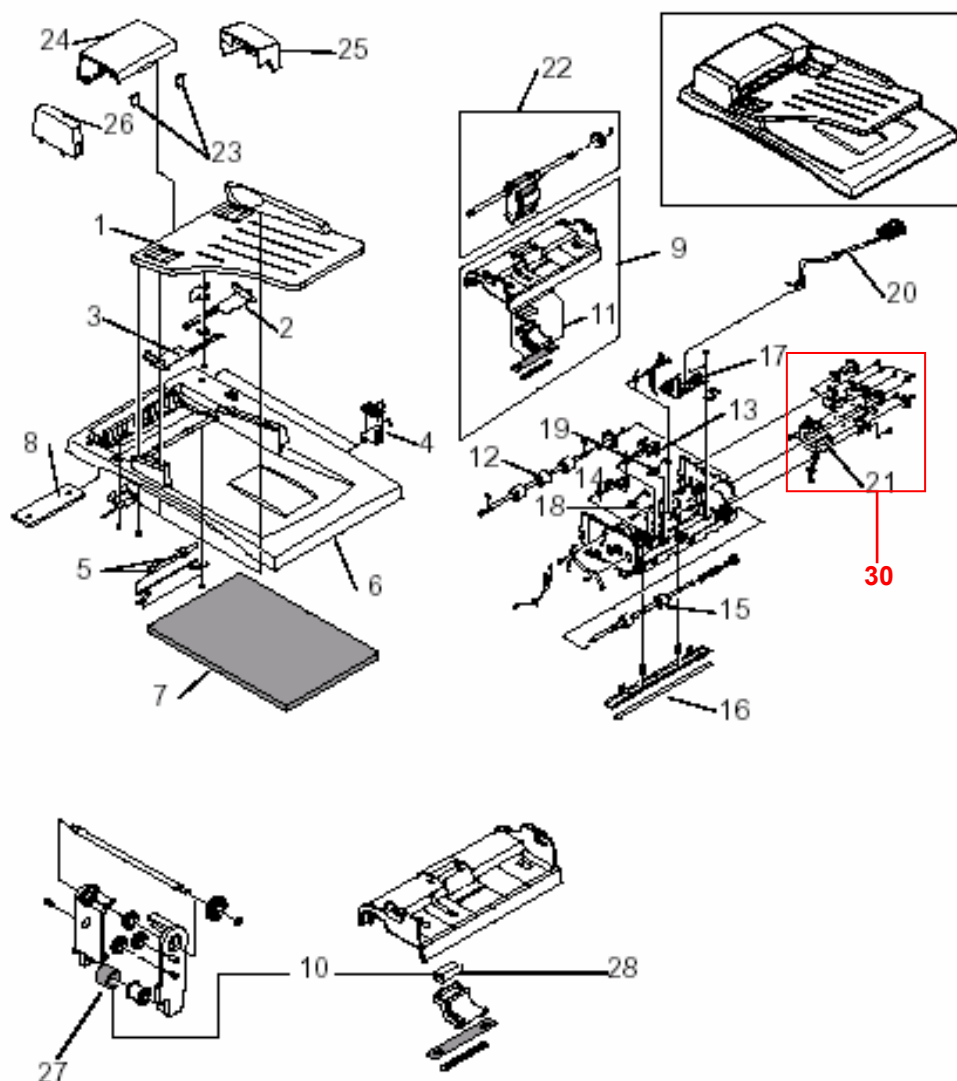
NEW Part Number	Description	Q'ty	Page	Index	Note
B1749757	ADF MOTOR GEAR ASSY	1	8	30	-

Change: This part was added.

Reason: Requests from the field.

3. ADF ASSEMBLY

Rev. 11/30/2006



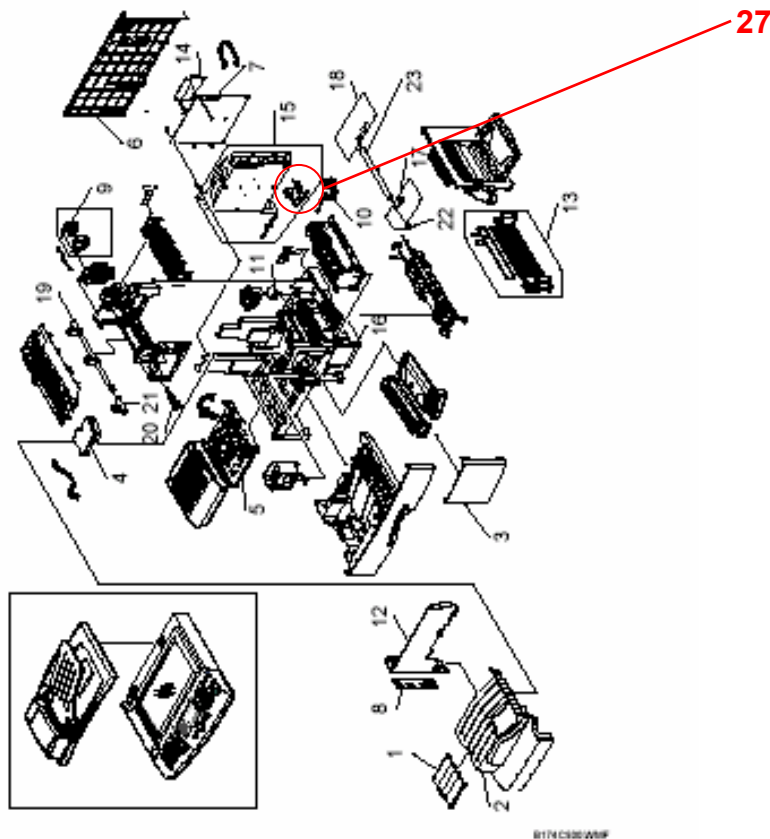
Model: Model T-C1		Date: 26-Aug-08	No.: MB174013
Modified Article: Parts Catalog Correction		Prepared by: T. Shintani	
From: 1st Tech. Support Sec. Service Support Dept.			
Reason for Modification:	<input checked="" type="checkbox"/> Parts catalog correction <input type="checkbox"/> Vendor change <input type="checkbox"/> Other <input type="checkbox"/> To facilitate assembly <input type="checkbox"/> To improve reliability <input type="checkbox"/> To meet standards <input type="checkbox"/> Part standardization <input type="checkbox"/> Product Safety ()		

NEW Part Number	Description	Q'ty	Page	Index	Note
B1749758	HARNESS-INLET	1	3	27	-

Change: This part was added.

Reason: Requests from the field.

1. MAIN ASSEMBLY



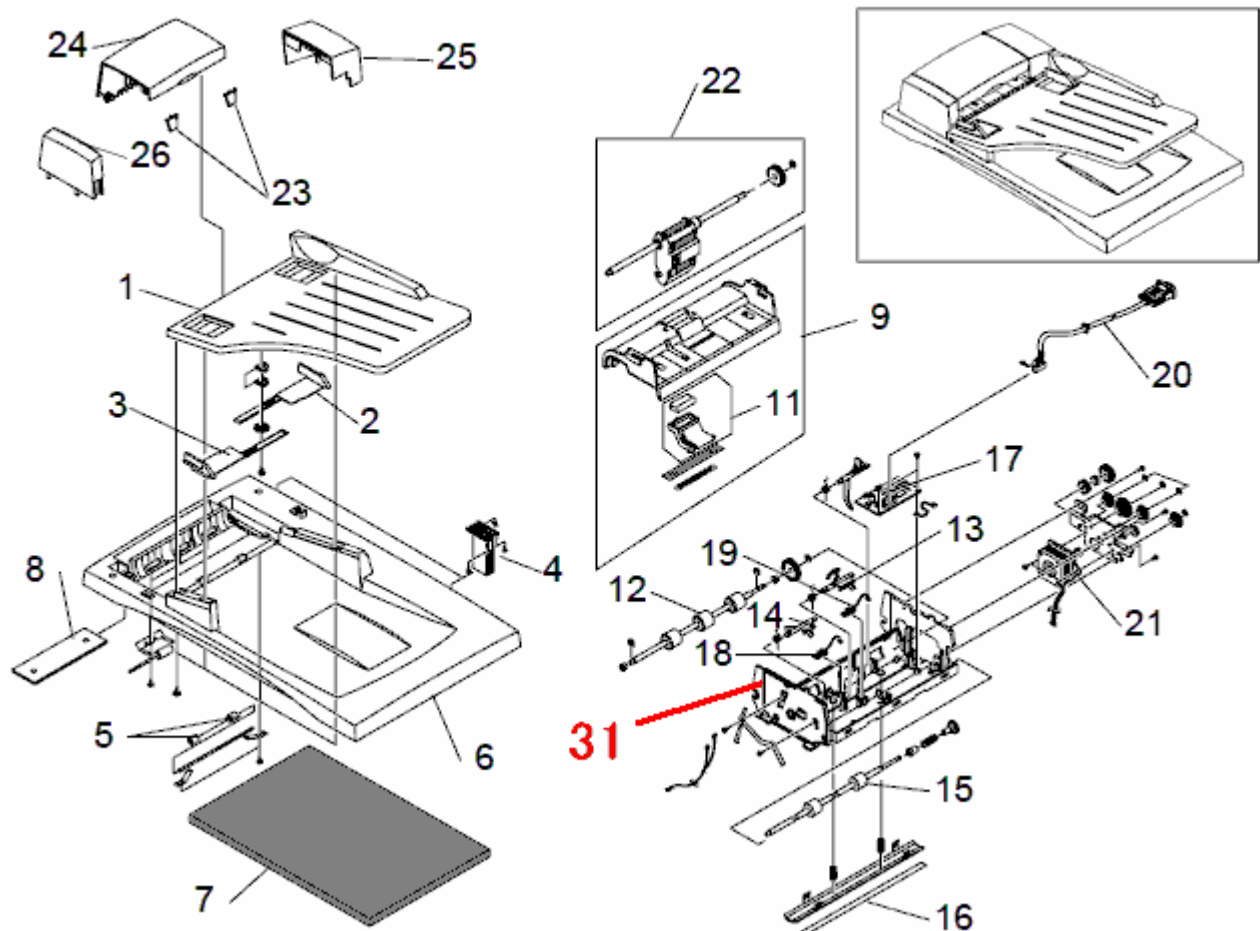
Model: Model T-C1		Date: 04-Feb-09	No.: MB174014
Modified Article: ADF ASSEMBLY		Prepared by: Y.Gaman	
From: 1st Tech. Support Sec. Service Support Dept.			
Reason for Modification:	<input checked="" type="checkbox"/> Parts catalog correction <input type="checkbox"/> Vendor change <input type="checkbox"/> Other <input type="checkbox"/> To facilitate assembly <input type="checkbox"/> To improve reliability <input type="checkbox"/> To meet standards <input type="checkbox"/> Part standardization <input type="checkbox"/> Product Safety ()		

Change: This part was added.

Reason: Requests from the field.

NEW Part	Description	Q'ty	Int	Page	Index	Note
B1749759	COVER ADF LOWER	1	-	8	31	

3. ADF ASSEMBLY



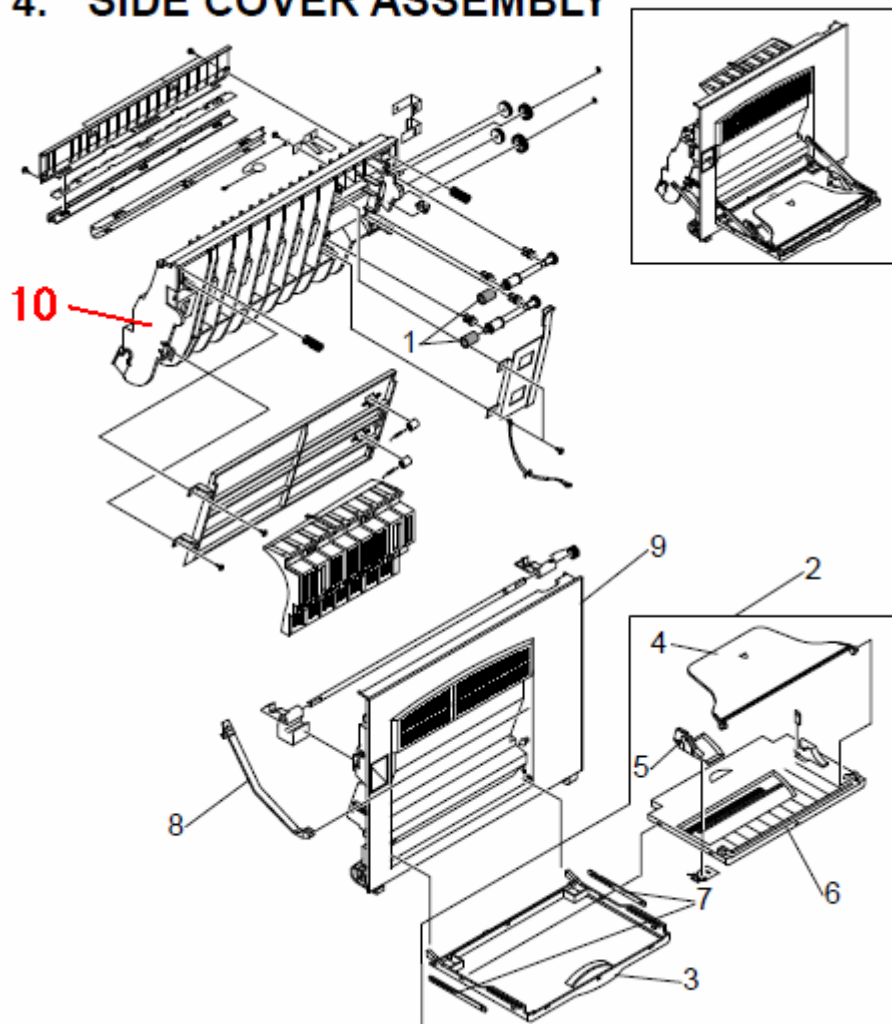
Model: Model T-C1		Date: 16-Feb-09	No.: MB174015
Modified Article: SIDE COVER ASSEMBLY		Prepared by: Y.Gaman	
From: 1st Tech. Support Sec. Service Support Dept.			
Reason for Modification:	<input checked="" type="checkbox"/> Parts catalog correction <input type="checkbox"/> Vendor change <input type="checkbox"/> Other <input type="checkbox"/> To facilitate assembly <input type="checkbox"/> To improve reliability <input type="checkbox"/> To meet standards <input type="checkbox"/> Part standardization <input type="checkbox"/> Product Safety ()		

Change: This part was added.

Reason: Requests from the field.

NEW Part	Description	Q'ty	Int	Page	Index	Note
B1749760	GUIDE FEED FRAME	1	-	9	10	

4. SIDE COVER ASSEMBLY





Part Change Information List

Date: October 30, 2009

Model	Code	PCIL Nr.	PCIL Correction	Old part number	New part number	Description	Old Q'ty	New Q'ty	Int	3DPC	Page	Index	Set	Set Int	RTB	Note	Ref. Nr.	ECN Nr.
T-C1	B174	200910			G9601152	BUSHING:JC7241364A	0	1			15	8			Y		V0902590	



Part Change Information List

Date: November 30, 2009

Model	Code	PCIL Nr.	PCIL Correction	Old part number	New part number	Description	Old Q'ty	New Q'ty	Int	3DPC	Page	Index	Set	Set Int	RTB	Note	Ref. Nr.	ECN Nr.
T-C1	B174	200911			B1749762	PICK-UP ASS'Y:JC96-02715B	0	1			15	8			Y		V0902590	



Part Change Information List

Date: December 29, 2009

Model	Code	PCIL Nr.	PCIL Correction	Old part number	New part number	Description	Old Q'ty	New Q'ty	Int	3DPC	Page	Index	Set	Set Int	RTB	Note	Ref. Nr.	ECN Nr.
T-C1	B174	200912		B1749565	B1749800	CCD UNIT	1	1			6	13					V0701631	