

Reissued: 27-Aug-04

Model: Model C-C1	Date: 17-Nov-03	No.: MB173001a
-------------------	-----------------	----------------

MB Correction

The items in bold italics have been corrected or added.

Modified Article: Parts catalog correction		Prepared by: T. Shintani	
From: 1st Technical Support Sec. Service Support Dept.			
Reason for Modification:	<input checked="" type="checkbox"/> Parts catalog correction <input type="checkbox"/> To facilitate assembly <input type="checkbox"/> Part standardization	<input type="checkbox"/> Vendor change <input type="checkbox"/> To improve reliability <input type="checkbox"/> Other	<input type="checkbox"/> To meet standards ()
Modification Schedule:	From first mass production.		

Old part number	New part number	Description	Q'ty	Int	Page	Index	Note
B1739671	B1734231	Brand Plaque – B173 : RIC	1→1	<i>O/O</i>	8	2	1, 2

Note:

1. Applicable models:

<i>B173</i>			
<i>17</i>	<i>27</i>	<i>29</i>	<i>21</i>
	✓	✓	✓

2. This change applies only to the part number modification. This was done for parts number management.

Model: Model C-C1 China Model		Date: 22-Oct-04	No.: MB173002
Modified Article: Parts catalog correction		Prepared by: A. Ishiyama	
From: 1st Technical Support Sec. Service Support Dept.			
Reason for Modification:	<input checked="" type="checkbox"/> Parts catalog correction <input type="checkbox"/> To facilitate assembly <input type="checkbox"/> Part standardization	<input type="checkbox"/> Vendor change <input type="checkbox"/> To improve reliability <input type="checkbox"/> Other	<input type="checkbox"/> To meet standards ()
Modification Schedule:	This new part is available from the first mass production.		

Old part number	New part number	Description	Q'ty	Int	Page	Index	Note
	H9169508	PSU – 220V	1	-	3	2	1
	B1739675	Fusing Unit – 220V : China	1		14	1	2

Change/Reason: These new parts were added for the C-C1 **China model (B173-21)** only.

Note: Applicable models.

B173				
	17	27	29	21
1				√
2				√

Model: Model C-C1 Asia Model		Date: 22-Oct-04	No.: MB173003
Modified Article: PCB - NCU		Prepared by: A. Ishiyama	
From: 1st Technical Support Sec. Service Support Dept.			
Reason for Modification:	<input checked="" type="checkbox"/> Parts catalog correction <input type="checkbox"/> To facilitate assembly <input type="checkbox"/> Part standardization	<input type="checkbox"/> Vendor change <input type="checkbox"/> To improve reliability <input type="checkbox"/> Other	<input type="checkbox"/> To meet standards ()
Modification Schedule:	This new part is available from the first mass production.		

Old part number	New part number	Description	Q'ty	Int	Page	Index	Note
B1739516		PCB – NCU : NA	1→0	X/O	3	11	1
	B1739676	PCB – NCU : Asia	0→1				

Change/Reason: These new parts were added for the C-C1 **Asia model (B173-29) only.**

Note: Applicable models:

B173				
Part No.	17	27	29	21
B1739516	√			√
B1739676			√	

Model: Model C-C1 EU Model		Date: 18-Nov-04	No.: MB173004
Modified Article: PCB - NCU		Prepared by: A. Ishiyama	
From: 1st Technical Support Sec. Service Support Dept.			
Reason for Modification:	<input type="checkbox"/> Parts catalog correction <input type="checkbox"/> To facilitate assembly <input type="checkbox"/> Part standardization	<input type="checkbox"/> Vendor change <input type="checkbox"/> To improve reliability <input type="checkbox"/> Other	<input checked="" type="checkbox"/> To meet standards (For S. Africa regulation)
Modification Schedule:	This new part is available from the October '04 production.		

Old part number	New part number	Description	Q'ty	Int	Page	Index	Note
B1739515		PCB – NCU : EU	1→0	O/O*	3	11	1, 2
	B1739677	PCB – NCU : EU/SA	0→1				

Change: Board components were added/deleted.

Reason: To make the EU model usable in South Africa.

Note:

- See RTB RB173003 and B173002b for more details.
- There is a round, green seal on the new NCU.

1. Applicable models:

B173				
Part No.	17	27	29	21
B1739515		√		
B1739677		√		

- Applied to C-C1 EU model (B173-27) from: S/N **K2549423762 (Oct. 2004)**

2. Interchangeability

South Africa model: **Only the new board** can be used.

Europe model: Interchangeability is **O/O on all machines**.

3. When you install the new NCU

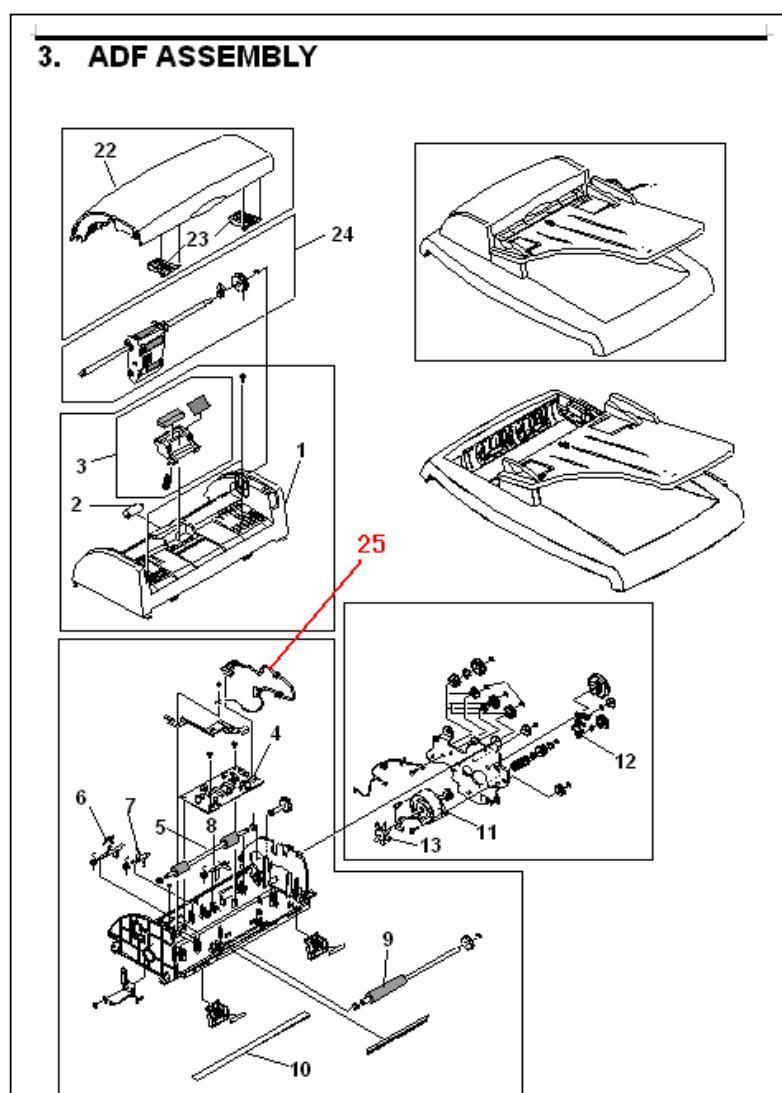
- 1) If you install the **new** NCU (B1739677), make sure to install firmware **v6.14 or later**.
- 2) When you install v6.14, make sure that the “LIU Select” setting is correct.
(Tech Mode >> Data Setup >> LUI Setting):

- v6.14 + **New** NCU: Select “**EU&SA LIU**”
- v6.14 + **Old** NCU: Select: “**EU LIU**”

Model: Model C-C1		Date: 25-Mar-05	No.: MB173005
Modified Article: Harness - ADF		Prepared by: A. Ishiyama	
From: 1st Technical Support Sec. Service Support Dept.			
Reason for Modification:	<input checked="" type="checkbox"/> Parts catalog correction <input type="checkbox"/> To facilitate assembly <input type="checkbox"/> Part standardization	<input type="checkbox"/> Vendor change <input type="checkbox"/> To improve reliability <input type="checkbox"/> Other	<input type="checkbox"/> To meet standards ()
Modification Schedule:	This new part is available from the first mass production.		

Please apply the following P/N corrections to your Parts Catalogs.

Old part number	New part number	Description	Q'ty	Int	Page	Index	Note
	B1739678	HARNESS - ADF	0→1	-	7	25	



Model: Model C-C1		Date: 27-Sep-05	No.: MB173006
Modified Article: Scanner harness		Prepared by: T. Shintani	
From: 1st Technical Support Sec. Service Support Dept.			
Reason for Modification:	<input checked="" type="checkbox"/> Parts catalog correction <input type="checkbox"/> To facilitate assembly <input type="checkbox"/> Part standardization	<input type="checkbox"/> Vendor change <input type="checkbox"/> To improve reliability <input type="checkbox"/> Other	<input type="checkbox"/> To meet standards ()
Modification Schedule:	This new part is available from the first mass production.		

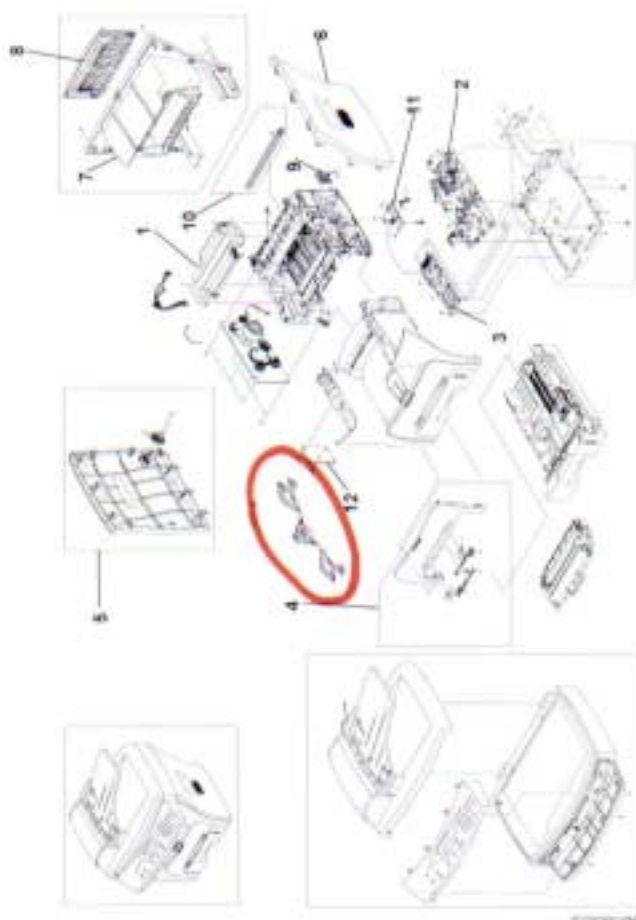
Please apply the following P/N corrections to your Parts Catalogs.

New part number	Description	Q'ty	Int	Page	Index	Note
B1739679	SCANNER HARNESS	0→1	-	2	13	

MAIN ASSEMBLY

27 February 2004

1. MAIN ASSEMBLY



Model: Model C-C1		Date: 14-Apr-06	No.: MB173007
Modified Article: Parts Catalog Correction		Prepared by: T. Shintani	
From: 1st Tech. Support Sec. Service Support Dept.			
Reason for Modification:	<input checked="" type="checkbox"/> Parts catalog correction <input type="checkbox"/> Vendor change <input type="checkbox"/> Other <input type="checkbox"/> To facilitate assembly <input type="checkbox"/> To improve reliability <input type="checkbox"/> To meet standards <input type="checkbox"/> Part standardization <input type="checkbox"/> Product Safety ()		

Please apply the following P/N corrections to your Parts Catalogs.

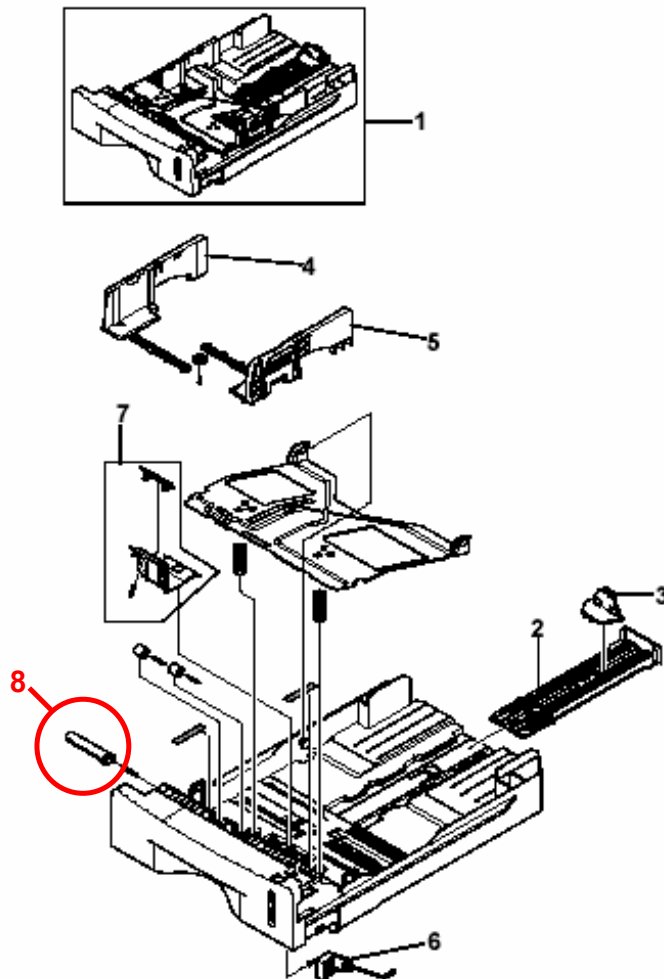
<B173> (Model C-C1)

Part number	Description	Q'ty	Int	Page	Index	Note
H9149554	LOCKER PLATE	0→1	1	15	8	

Change: This part was added.


Reason: Requests from the field.

9. CASSETTE ASSEMBLY




Model: Model C-C1		Date: 13-Apr-06	No.: MB173008
Modified Article: Parts Catalog Correction		Prepared by: T. Shintani	
From: 1st Tech. Support Sec. Service Support Dept.			
Reason for Modification:	<input checked="" type="checkbox"/> Parts catalog correction <input type="checkbox"/> Vendor change <input type="checkbox"/> Other <input type="checkbox"/> To facilitate assembly <input type="checkbox"/> To improve reliability <input type="checkbox"/> To meet standards <input type="checkbox"/> Part standardization <input type="checkbox"/> Product Safety ()		

Please apply the following P/N corrections to your Parts Catalogs.

<B173> (Model C-C1)


Part number	Description	Q'ty	Int	Page	Index	Note
B1739681	GEAR-CLUTCH 29	0→1	1	7	26	
B1739682	WHITE CLUTCH SUB 29	0→1	1	7	27	
B1739683	GEAR – CLUTCH 39	0→1	1	7	28	
B1739684	C-RING	0→1	1	7	29	
B1739685	GEAR – IDLE 35 ADF	0→1	1	7	30	
B1739686	GEAR – 40/21 ADF	0→1	1	7	31	
B1739687	GEAR – SWING 31/20 ADF	0→1	1	7	32	
B1739688	GEAR – 58/25 ADF	0→1	1	7	33	
B1739689	IPR – WASHER WAVE	0→1	1	7	34	
B1739690	SPRING-ADF	0→1	1	7	35	
B1739691	GEAR-ADF	0→1	1	7	36	
B1739680	PAPER GUIDE	0→1	1	13	17	
G1449550	FEED SHAFT	0→1	1	13	18	
G1449567	FEED SHAFT GEAR	0→1	1	13	19	



Change: These parts were added.

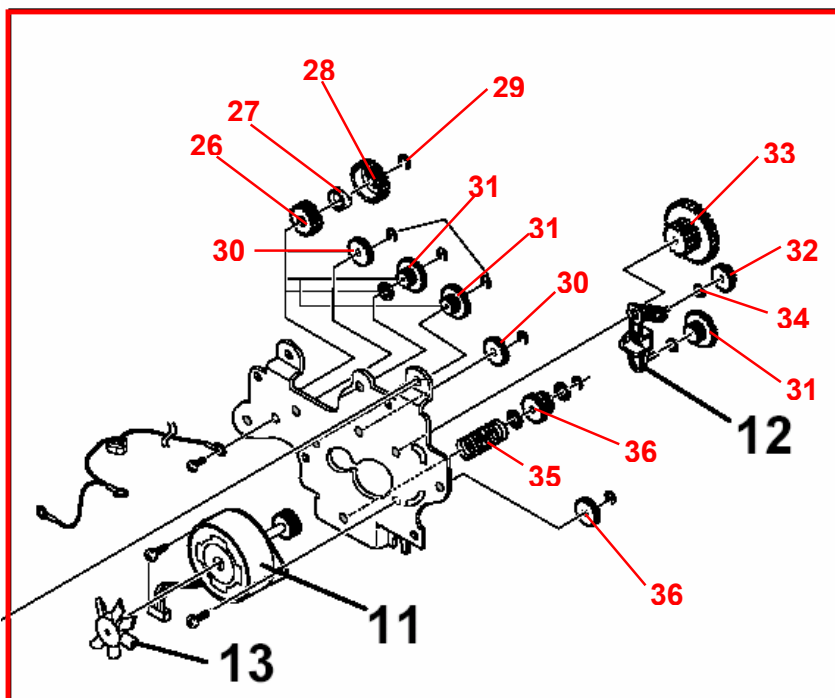
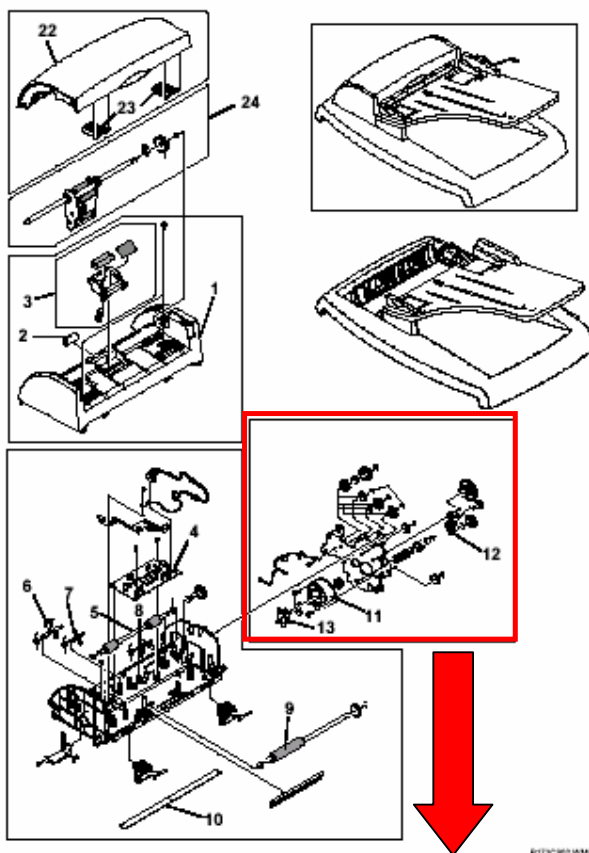
Reason: Requests from the field.

Model: Model C-C1

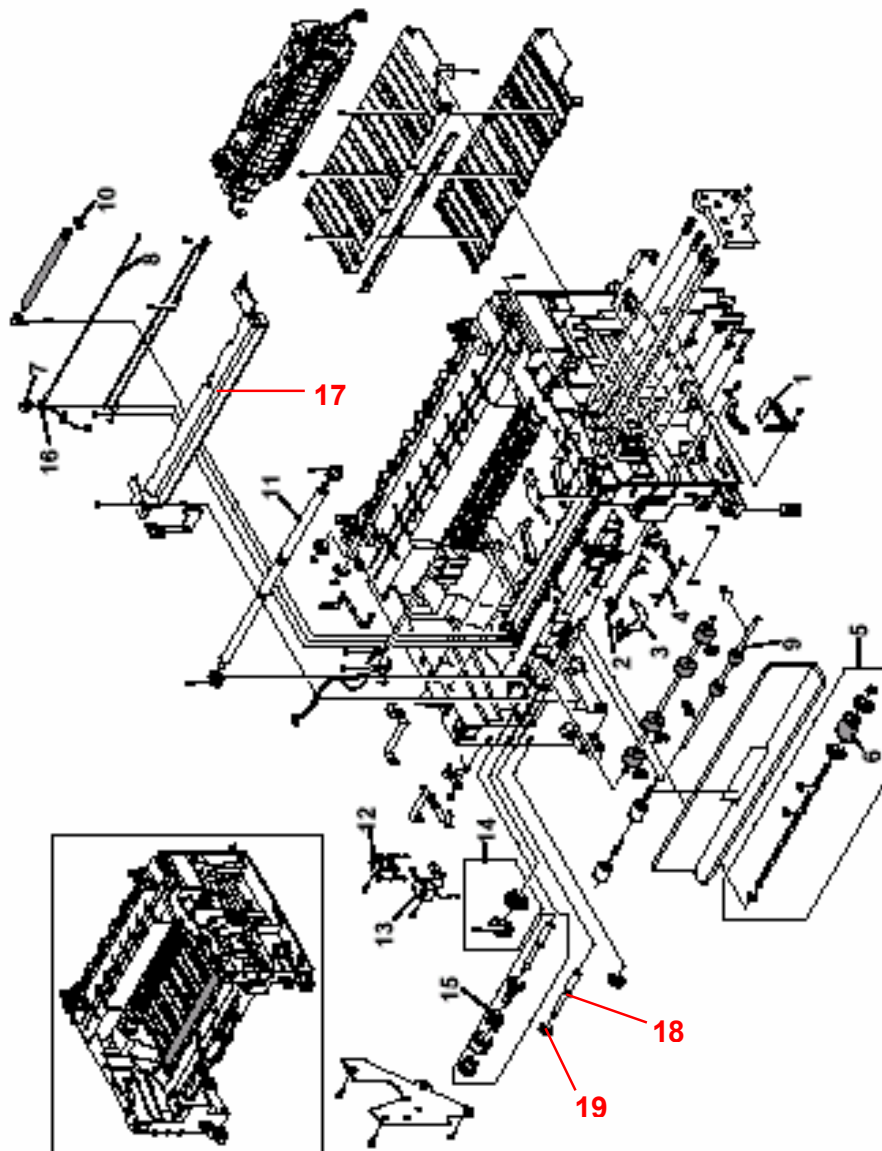
Date: 13-Apr-06

No.: MB173008

3. ADF ASSEMBLY



7. FRAME ASSEMBLY



W1130087.MMP

Model: Model C-C1		Date: 10-May-06	No.: MB173009
Modified Article: Parts Catalog Correction		Prepared by: T. Shintani	
From: 1st Tech. Support Sec. Service Support Dept.			
Reason for Modification:	<input checked="" type="checkbox"/> Parts catalog correction	<input type="checkbox"/> Vendor change	<input type="checkbox"/> Other
	<input type="checkbox"/> To facilitate assembly	<input type="checkbox"/> To improve reliability	<input type="checkbox"/> To meet standards
	<input type="checkbox"/> Part standardization	<input type="checkbox"/> Product Safety	()

Please apply the following P/N corrections to your Parts Catalogs.

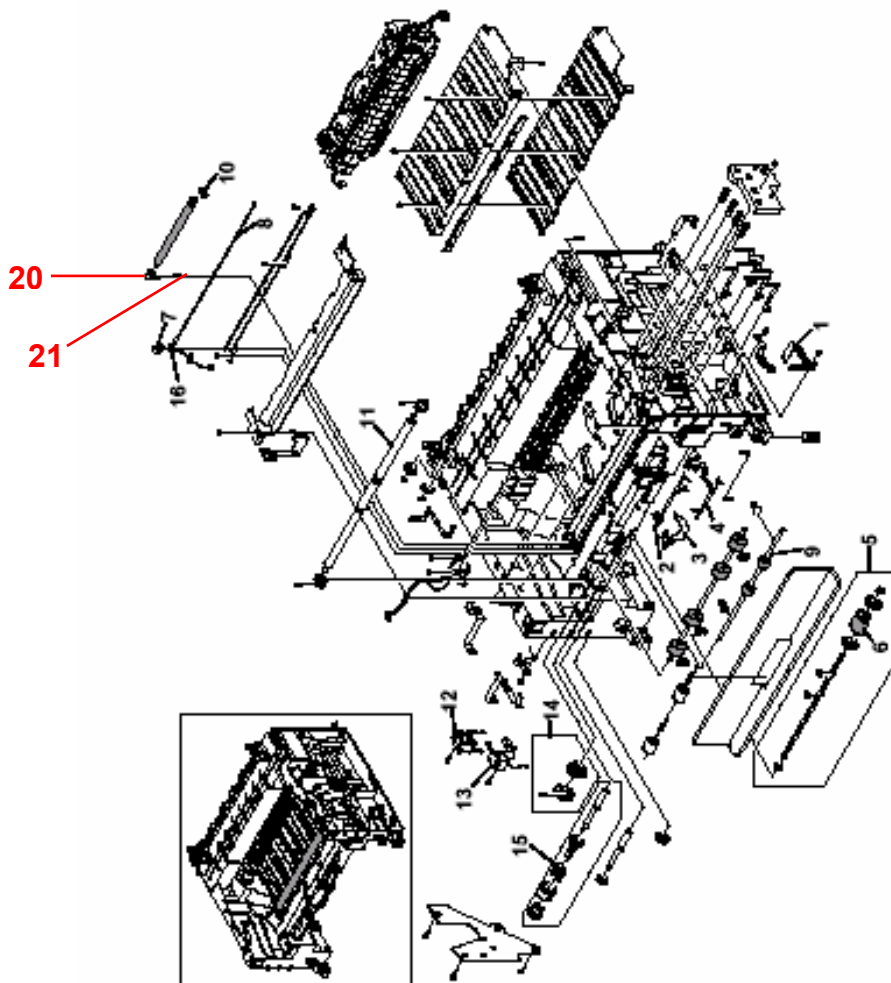
<B173> (Model C-C1)

Part number	Description	Q'ty	Int	Page	Index	Note
G1449555	BUSHING – TRANSFER ROLLER	0→1	1	13	20	
G1449554	SPRING – TRANSFER ROLLER	0→1	1	13	21	

Change: These parts were added.

Reason: Requests from the field.

7. FRAME ASSEMBLY



8/13/06/07/08/09

Model: Model C-C1		Date:19-Jul-06	No.: MB173010
Modified Article: Parts Catalog Correction		Prepared by: T. Shintani	
From: 1st Tech. Support Sec. Service Support Dept.			
Reason for Modification:	<input checked="" type="checkbox"/> Parts catalog correction <input type="checkbox"/> Vendor change <input type="checkbox"/> Other <input type="checkbox"/> To facilitate assembly <input type="checkbox"/> To improve reliability <input type="checkbox"/> To meet standards <input type="checkbox"/> Part standardization <input type="checkbox"/> Product Safety ()		

<B173> (Model C-C1)

OLD part number	NEW part number	Description	Q'ty	Int	Page	Index	Note
B1739684	H9119603	C-RING	1→1	-	7	29	

Change/Reason: The part number in the Parts Catalog was corrected.

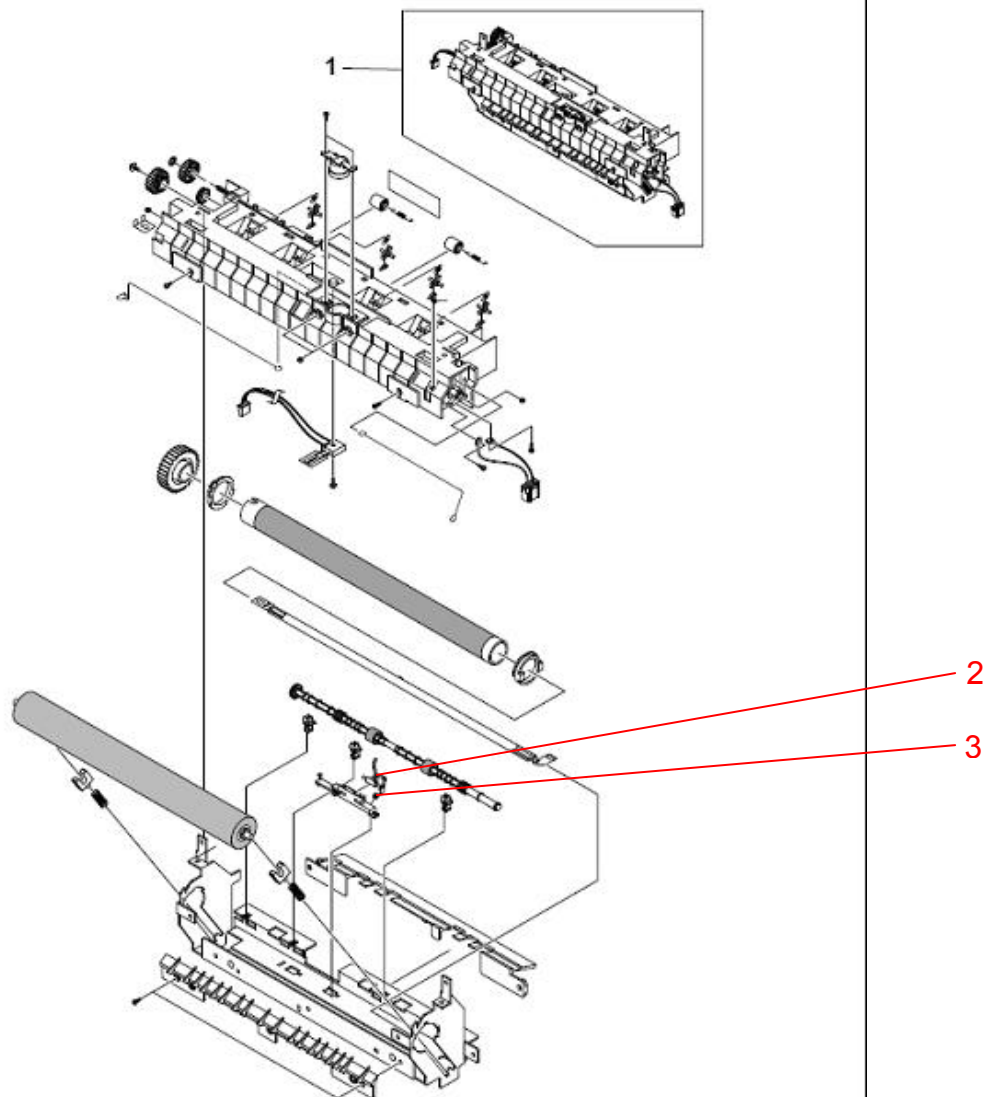
Model: Model C-C1		Date: 8-Aug-06	No.: MB173011
Modified Article: Parts Catalog Correction		Prepared by: T. Shintani	
From: 1st Tech. Support Sec. Service Support Dept.			
Reason for Modification:	<input checked="" type="checkbox"/> Parts catalog correction <input type="checkbox"/> Vendor change <input type="checkbox"/> Other <input type="checkbox"/> To facilitate assembly <input type="checkbox"/> To improve reliability <input type="checkbox"/> To meet standards <input type="checkbox"/> Part standardization <input type="checkbox"/> Product Safety ()		

<B173> (Model C-C1)

NEW part number	Description	Q'ty	Int	Page	Index	Note
B1739693	EXIT ACTUATOR	0→1	-	14	2	
B1739694	SPRING-TS	0→1	-	14	3	

Change: This part was added.

Reason: Requests from the field.

8. FUSER ASSEMBLY


Model: Model C-C1		Date: 8-Feb-07	No.: MB173012
Modified Article: Parts Catalog Correction		Prepared by: T. Shintani	
From: 1st Tech. Support Sec. Service Support Dept.			
Reason for Modification:	<input checked="" type="checkbox"/> Parts catalog correction <input type="checkbox"/> Vendor change <input type="checkbox"/> Other <input type="checkbox"/> To facilitate assembly <input type="checkbox"/> To improve reliability <input type="checkbox"/> To meet standards <input type="checkbox"/> Part standardization <input type="checkbox"/> Product Safety ()		

<B173> (Model C-C1)

OLD part number	NEW part number	Description	Q'ty	Int	Page	Index	Note
H9169508	H9169657	PSU - 220V	1→1	-	3	2	

Change: The materials of the following parts were changed.

Reason: To comply with the RoHS Directive.

Model: Model C-C1		Date: 17-Apr-07	No.: MB173014
Modified Article: Parts Catalog Correction		Prepared by: T. Shintani	
From: 1st Tech. Support Sec. Service Support Dept.			
Reason for Modification:	<input checked="" type="checkbox"/> Parts catalog correction <input type="checkbox"/> Vendor change <input type="checkbox"/> Other <input type="checkbox"/> To facilitate assembly <input type="checkbox"/> To improve reliability <input type="checkbox"/> To meet standards <input type="checkbox"/> Part standardization <input type="checkbox"/> Product Safety ()		

<B173> (Model C-C1)

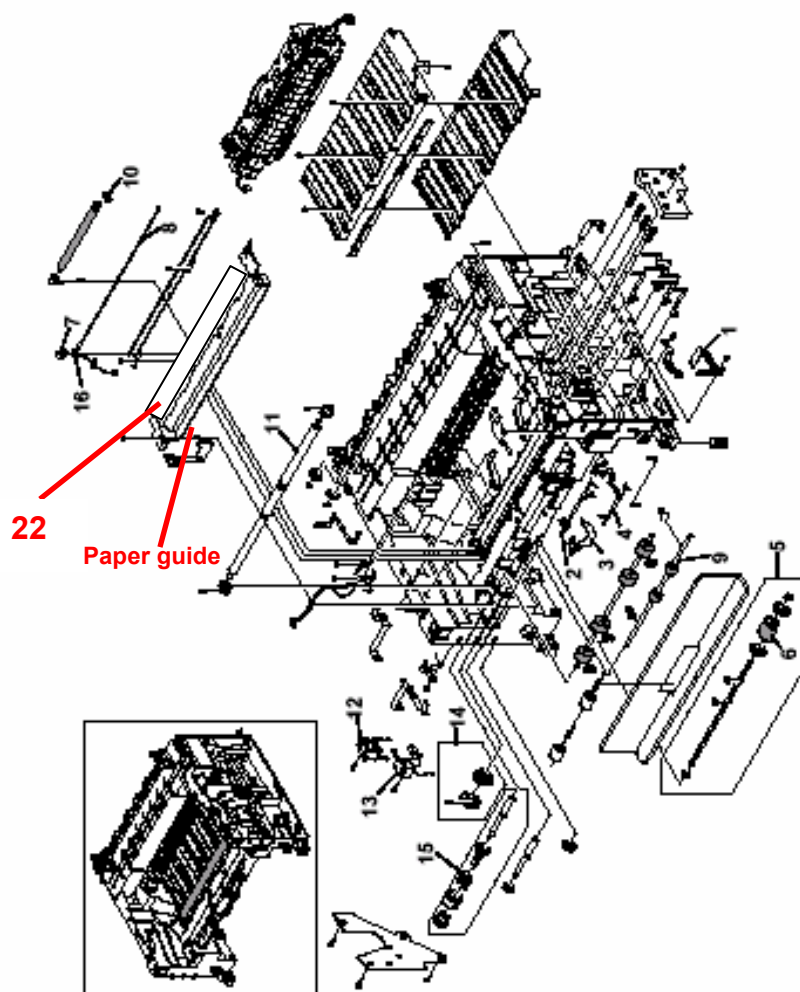
NEW part number	Description	Q'ty	Int	Page	Index	Note
B1737500	Myler - Guide	0→1	-	13	22	

Change: This part was added.

Reason: A request was received from the field.

Note: This new part is attached to the "Paper guide".

7. FRAME ASSEMBLY



©2007 RICOH

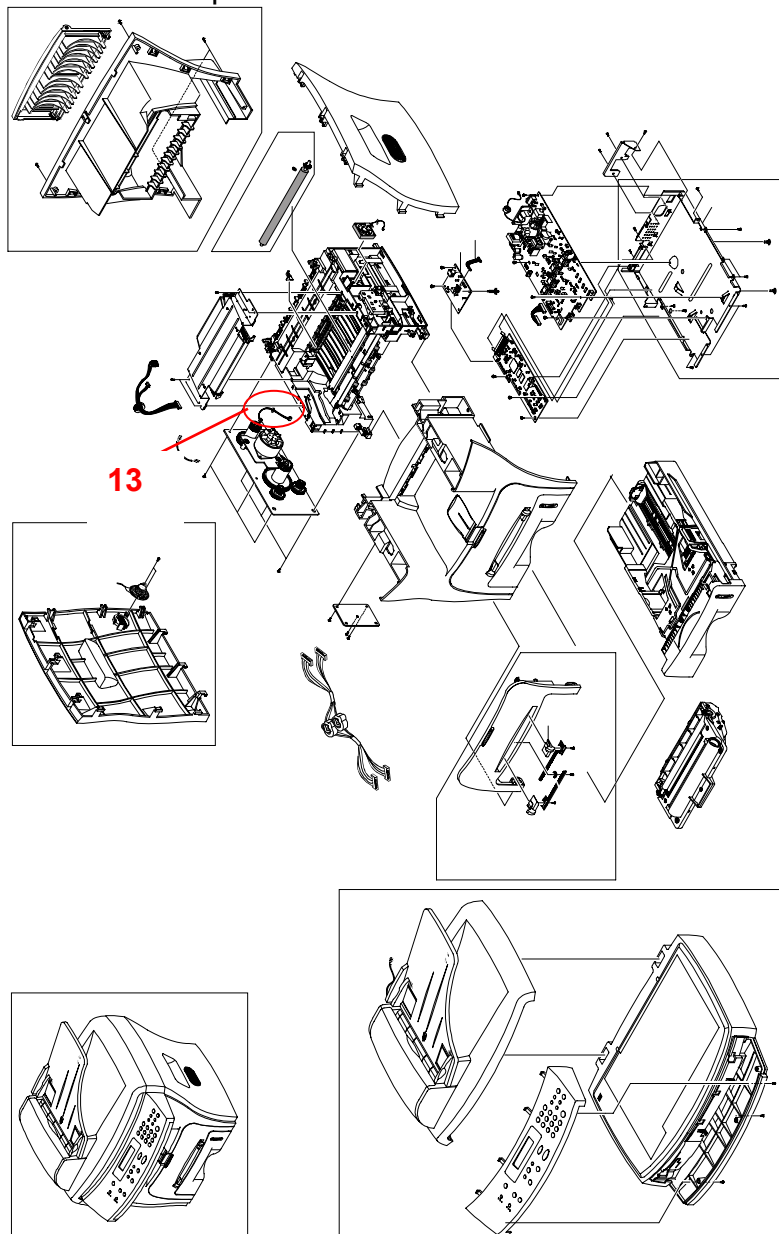
Model: Model C-C1		Date: 25-Apr-07	No.: MB173015
Modified Article: Parts Catalog Correction		Prepared by: T. Shintani	
From: 1st Tech. Support Sec. Service Support Dept.			
Reason for Modification:	<input checked="" type="checkbox"/> Parts catalog correction <input type="checkbox"/> Vendor change <input type="checkbox"/> Other <input type="checkbox"/> To facilitate assembly <input type="checkbox"/> To improve reliability <input type="checkbox"/> To meet standards <input type="checkbox"/> Part standardization <input type="checkbox"/> Product Safety ()		

<B173> (Model C-C1)

NEW part number	Description	Q'ty	Int	Page	Index	Note
B1737501	Harness – Rx drive	0→1	-	3	13	

Change: This part was added.

Reason: A request was received from the field.



Model: Model C-C1		Date: 7-May-07	No.: MB173016
Modified Article: Parts Catalog Correction		Prepared by: T. Shintani	
From: 1st Tech. Support Sec. Service Support Dept.			
Reason for Modification:	<input checked="" type="checkbox"/> Parts catalog correction <input type="checkbox"/> Vendor change <input type="checkbox"/> Other <input type="checkbox"/> To facilitate assembly <input type="checkbox"/> To improve reliability <input type="checkbox"/> To meet standards <input type="checkbox"/> Part standardization <input type="checkbox"/> Product Safety ()		

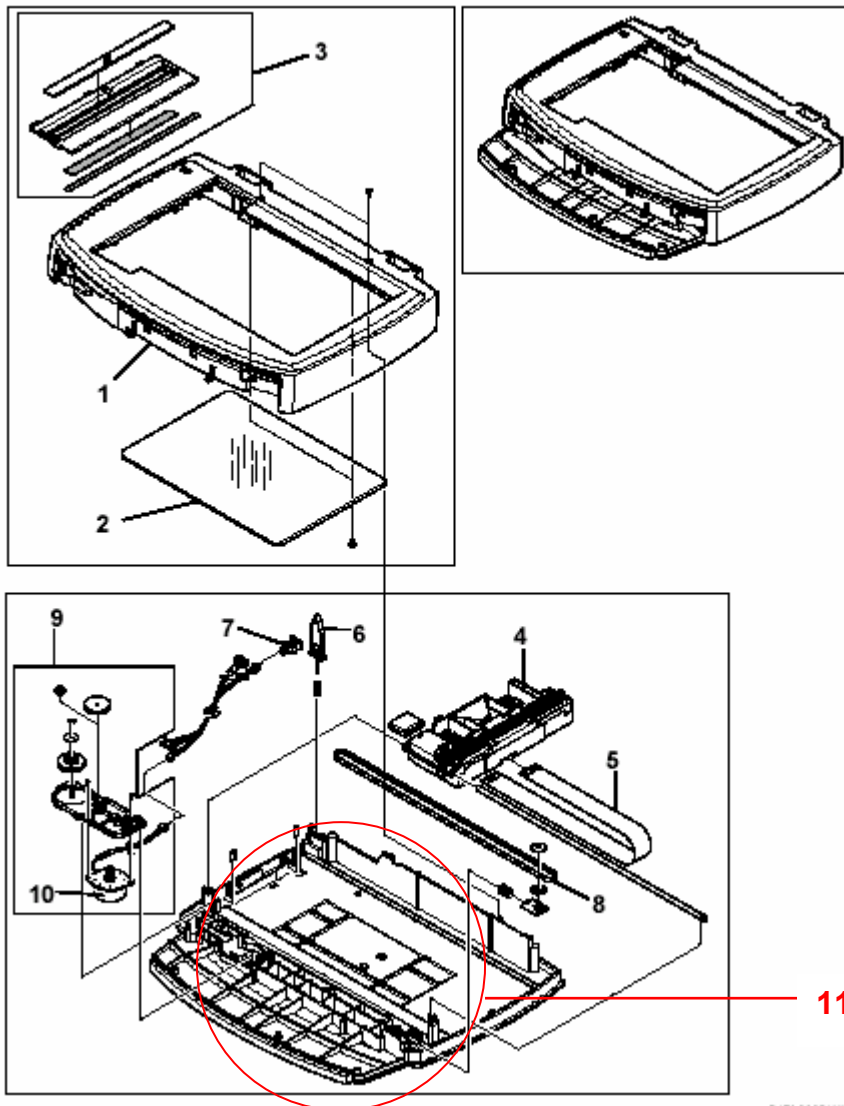
<B173> (Model C-C1)

NEW part number	Description	Q'ty	Int	Page	Index	Note
B1739692	Scanner Lower Cover	0→1	-	10	11	

Change: This part was added.

Reason: A request was received from the field.

5. SCANNER ASSEMBLY



B173C005.WMF

Model: Model C-C1		Date: 27-Aug-07	No.: MB173017
Modified Article: Parts Catalog Correction		Prepared by: T. Shintani	
From: 1st Tech. Support Sec. Service Support Dept.			
Reason for Modification:	<input checked="" type="checkbox"/> Parts catalog correction <input type="checkbox"/> Vendor change <input type="checkbox"/> Other <input type="checkbox"/> To facilitate assembly <input type="checkbox"/> To improve reliability <input type="checkbox"/> To meet standards <input type="checkbox"/> Part standardization <input type="checkbox"/> Product Safety ()		

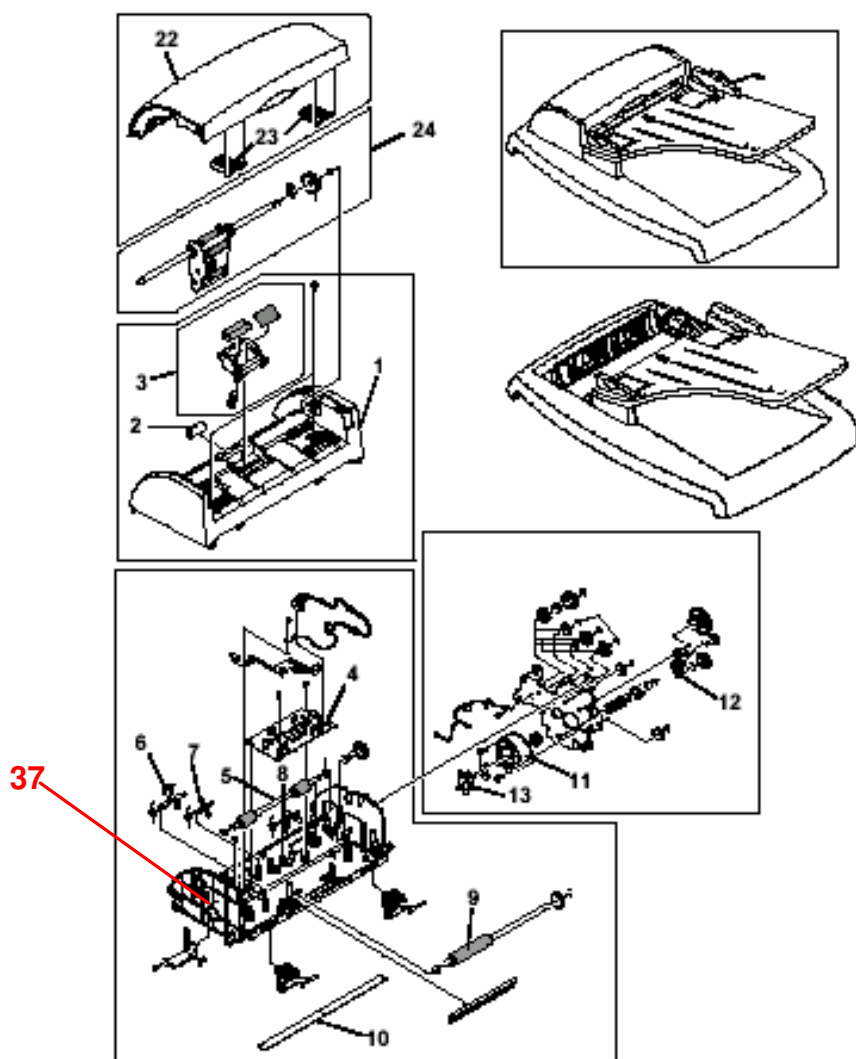
<B173> (Model C-C1)

NEW part number	Description	Q'ty	Int	Page	Index	Note
B1739695	ADF – LOWER COVER	0→1	-	5	37	

Change: This part was added.

Reason: A request was received from the field.

3. ADF ASSEMBLY



B173C02 WMP

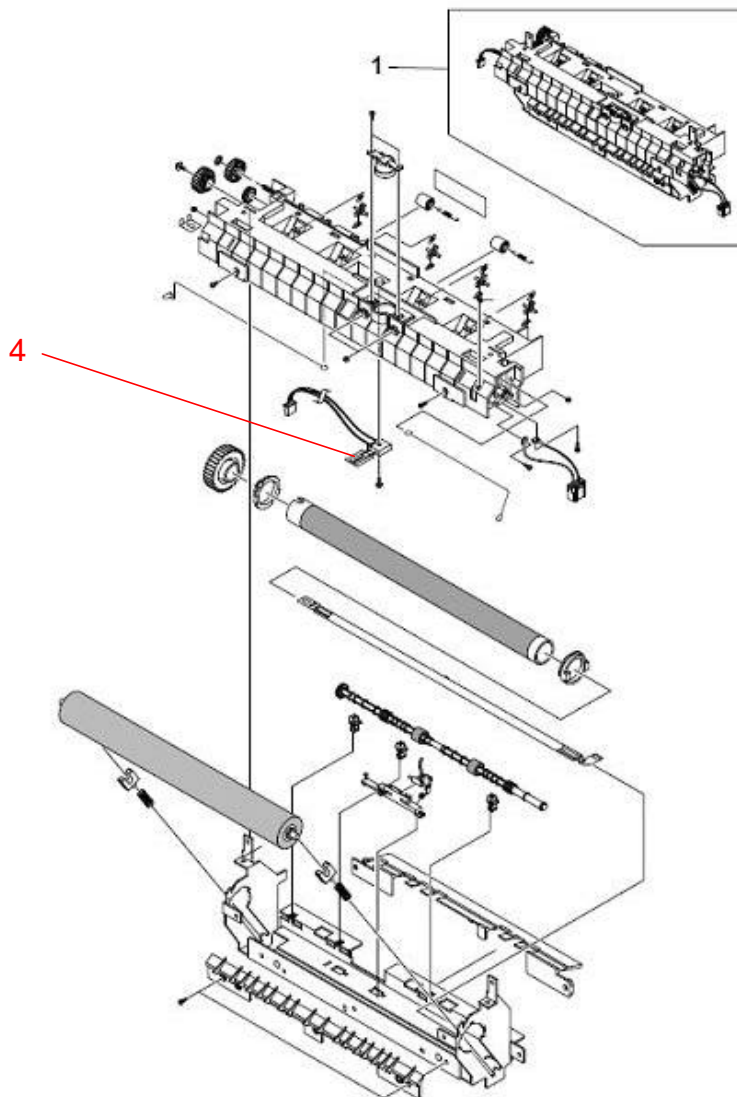
Model: Model C-C1		Date: 27-Aug-07	No.: MB173018
Modified Article: Parts Catalog Correction		Prepared by: T. Shintani	
From: 1st Tech. Support Sec. Service Support Dept.			
Reason for Modification:	<input checked="" type="checkbox"/> Parts catalog correction <input type="checkbox"/> Vendor change <input type="checkbox"/> Other <input type="checkbox"/> To facilitate assembly <input type="checkbox"/> To improve reliability <input type="checkbox"/> To meet standards <input type="checkbox"/> Part standardization <input type="checkbox"/> Product Safety ()		

<B173> (Model C-C1)

NEW part number	Description	Q'ty	Int	Page	Index	Note
G1449725	THERMISTOR	0→1	-	14	4	

Change: This part was added.

Reason: Requests from the field.

8. FUSER ASSEMBLY


Model: Model C-C1		Date: 18-Jan-08	No.: MB173019
Modified Article: Parts Catalog Correction		Prepared by: T. Shintani	
From: 1st Tech. Support Sec. Service Support Dept.			
Reason for Modification:	<input checked="" type="checkbox"/> Parts catalog correction	<input type="checkbox"/> Vendor change	<input type="checkbox"/> Other
	<input type="checkbox"/> To facilitate assembly	<input type="checkbox"/> To improve reliability	<input type="checkbox"/> To meet standards ()
	<input type="checkbox"/> Part standardization	<input type="checkbox"/> Product Safety	

<B173> (Model C-C1)

NEW part number	Description	Q'ty	Int	Page	Index	Note
G1449734	GEAR 53/26	0→1	-	4	3	
B1739696	GEAR 113/33	0→1	-	4	4	

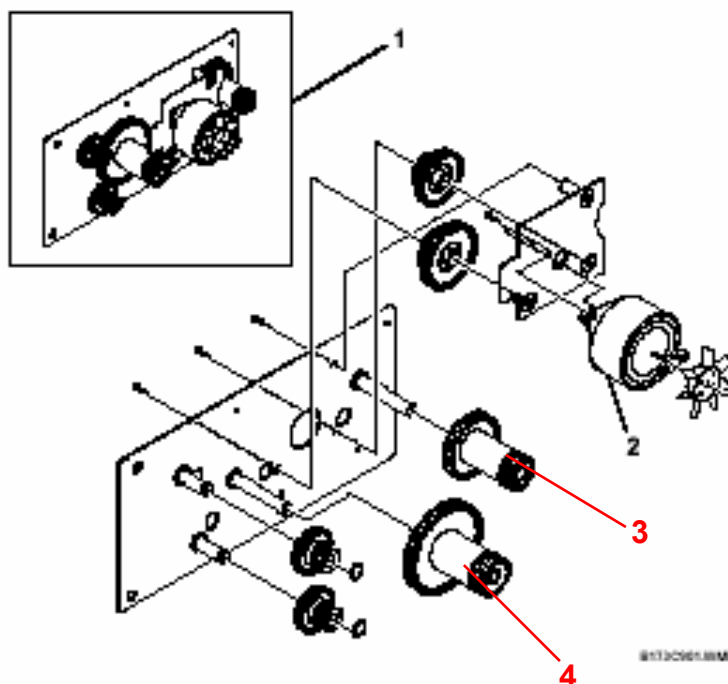
Change: This part was added.

Reason: Requests from the field.

RX DRIVE ASSEMBLY

27 February 2004

2. RX DRIVE ASSEMBLY



Model: Model C-C1		Date: 18-Jan-08	No.: MB173020
Modified Article: Parts Catalog Correction		Prepared by: T. Shintani	
From: 1st Tech. Support Sec. Service Support Dept.			
Reason for Modification:	<input checked="" type="checkbox"/> Parts catalog correction <input type="checkbox"/> Vendor change <input type="checkbox"/> Other <input type="checkbox"/> To facilitate assembly <input type="checkbox"/> To improve reliability <input type="checkbox"/> To meet standards <input type="checkbox"/> Part standardization <input type="checkbox"/> Product Safety ()		

<B173> (Model C-C1)
Change: The materials of the following parts were changed.

Reason: To comply with the RoHS Directive.

OLD	New	Name	Page	Index
B1739505	H9149679	FRONT COVER	1	4
B1739509	H9149656	FACE UP DOOR - RF	1	8
B1739511	H9149657	COOLING FAN	1	9
B1739665	H9169656	PSU - 110V	1	2
B1739526	H9149675	RX DRIVE ASS'Y	2	1
B1739531	H9149676	STEPPING MOTOR 28	2	2
B1739539	B2739676	ADE DRIVE ROLLER	3	5
B1739541	B2739678	ACTUATOR - ADE	3	7
B1739542	B2739679	ACTUATOR - ADE	3	8
B1739546	B2739680	EXIT ROLLER - ADE	3	9
B1739562	B2739684	LINK - SWING - ADE	3	12
B1739564	B2739685	IMPELLER - ADE	3	13
B1739574	B2739687	SPONGE SHEET	3	15
B1739586	B2739694	PAPER GUIDE - ADE	3	23
B1739589	B2739701	PLATEN GLASS	5	2
B1739601	B2739707	SENSOR LEVER	5	6
B1739602	B2739708	PLATEN COVER SENSOR	5	7
B1739604	B2739706	TIMING BELT - SCANNER	5	8
B1739606	B2739711	SCANNER MOTOR 18W	5	10
B1739610	H9149686	PAPER STACK - EXT	6	3
B1739611	G1449711	PAPER STACK - EXT	6	4
B1739621	H9149701	ACTUATOR - COVER	7	1
B1739625	H9149702	ACTUATOR - FEED	7	2
B1739626	H9149703	ACTUATOR - PAPER	7	3
B1739627	H9149704	ACTUATOR - BYPASS	7	4
B1739629	H9149705	PAPER PICK-UP ASSY	7	5
B1739631	H9149706	SPONGE ROLLER - PICK	7	6
B1739635	H9149707	HOLDER - QUENCHING	7	7
B1739636	H9149708	LENS - QUENCHING	7	8
B1739638	H9149709	FEED ROLLER	7	9
B1739639	H9149710	BUSHING - TRANSFER	7	10
B1739641	H9149711	IDLE SHAFT - FEED	7	11
B1739646	H9149712	SOLENOID - PICK-UP	7	12
B1739647	H9149713	SOLENOID - BYPASS	7	13
B1739648	H9149714	GEAR - PICK-UP	7	14
B1739651	B2739719	FEED CLUTCH ASS'Y	7	15
B1739656	H9149716	FUSING UNIT - 220	8	1
B1739666	H9149717	FUSING UNIT - 110	8	2
B1739657	H9149658	CASSETTE ASS'Y	9	1
B1739658	H9149723	EXTENSION - END	9	2
B1739659	H9149724	END FENCE	9	3
B1739661	H9149719	SIDE FENCE - L	9	4
B1739662	H9149720	SIDE FENCE - R	9	5
B1739663	H9149721	LEVER - PAPER INDICA	9	6
B1739670	H9149722	FRICITION PAD ASS'Y	9	7

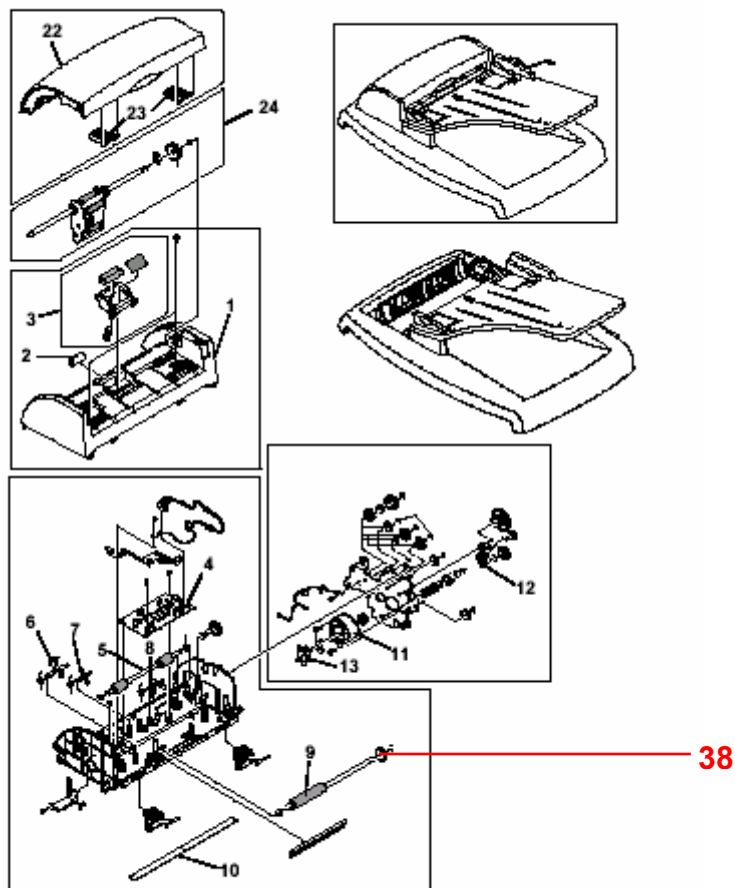
Model: Model C-C1		Date: 12-Feb-08	No.: MB173021
Modified Article: Parts Catalog Correction		Prepared by: T. Shintani	
From: 1st Tech. Support Sec. Service Support Dept.			
Reason for Modification:	<input checked="" type="checkbox"/> Parts catalog correction <input type="checkbox"/> Vendor change <input type="checkbox"/> Other <input type="checkbox"/> To facilitate assembly <input type="checkbox"/> To improve reliability <input type="checkbox"/> To meet standards <input type="checkbox"/> Part standardization <input type="checkbox"/> Product Safety ()		

NEW Part Number	Description	Q'ty	Page	Index	Note
G9601409	GEAR-AGITATOR-2:	1	7	38	-

Change: This part was added.

Reason: Requests from the field.

3. ADF ASSEMBLY



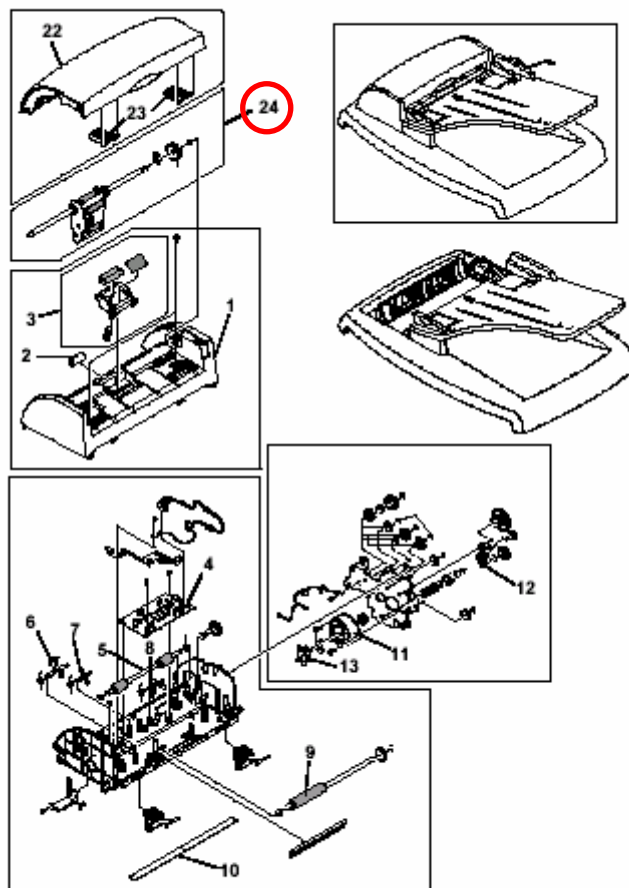
8173022-0001

Model: Model C-C1		Date: 20-Feb-08	No.: MB173022
Modified Article: Parts Catalog Correction		Prepared by: T. Shintani	
From: 1st Tech. Support Sec. Service Support Dept.			
Reason for Modification:	<input checked="" type="checkbox"/> Parts catalog correction <input type="checkbox"/> Vendor change <input type="checkbox"/> Other <input type="checkbox"/> To facilitate assembly <input type="checkbox"/> To improve reliability <input type="checkbox"/> To meet standards <input type="checkbox"/> Part standardization <input type="checkbox"/> Product Safety ()		

OLD Part Number	NEW Part Number	Description	Q'ty	Page	Index	Note
B1739587	B1739800	ADF PICK-UP ASS'Y	1	7	24	-

Change/Reason: The part number in the Parts Catalog was corrected.

3. ADF ASSEMBLY



8173C802-WMF

Model: Model C-C1		Date: 21-Apr-08	No.: MB173023
Modified Article: Parts Catalog Correction		Prepared by: T. Shintani	
From: 1st Tech. Support Sec. Service Support Dept.			
Reason for Modification:	<input checked="" type="checkbox"/> Parts catalog correction <input type="checkbox"/> Vendor change <input type="checkbox"/> Other <input type="checkbox"/> To facilitate assembly <input type="checkbox"/> To improve reliability <input type="checkbox"/> To meet standards <input type="checkbox"/> Part standardization <input type="checkbox"/> Product Safety ()		

OLD Part Number	NEW Part Number	Description	Q'ty	Page	Index	Note
G1449550	G9601311	FEED SHAFT	1	13	18	
G1449555	G9601060	BUSHING - TRANSFER	1	13	20	
G1449554	G9601055	SPRING - TRANSFER	1	13	21	

Change/Reason: Parts standardization with Model CM-C2.

Model: Model C-C1		Date: 3-Sep-08	No.: MB173024
Modified Article: Parts Catalog Correction		Prepared by: T. Shintani	
From: 1st Tech. Support Sec. Service Support Dept.			
Reason for Modification:	<input checked="" type="checkbox"/> Parts catalog correction	<input type="checkbox"/> Vendor change	<input type="checkbox"/> Other
	<input type="checkbox"/> To facilitate assembly	<input type="checkbox"/> To improve reliability	<input type="checkbox"/> To meet standards
	<input type="checkbox"/> Part standardization	<input type="checkbox"/> Product Safety	()

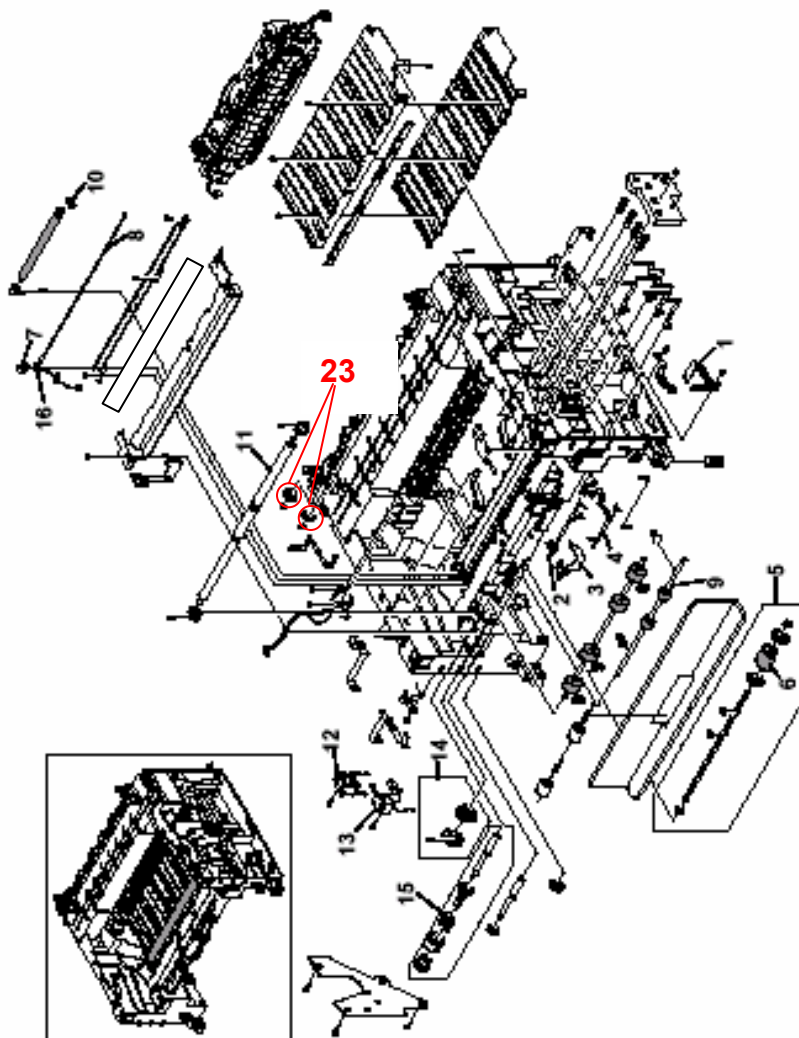
<B173> (Model C-C1)

NEW part number	Description	Q'ty	Int	Page	Index	Note
B1739804	GEAR DRIVE16	0→1	-	13	23	

Change: This part was added.

Reason: A request was received from the field.

7. FRAME ASSEMBLY



Model: Model C-C1		Date: 5-Sep-08	No.: MB173025
Modified Article: Parts Catalog Correction		Prepared by: T. Shintani	
From: 1st Tech. Support Sec. Service Support Dept.			
Reason for Modification:	<input checked="" type="checkbox"/> Parts catalog correction	<input type="checkbox"/> Vendor change	<input type="checkbox"/> Other
	<input type="checkbox"/> To facilitate assembly	<input type="checkbox"/> To improve reliability	<input type="checkbox"/> To meet standards
	<input type="checkbox"/> Part standardization	<input type="checkbox"/> Product Safety	()

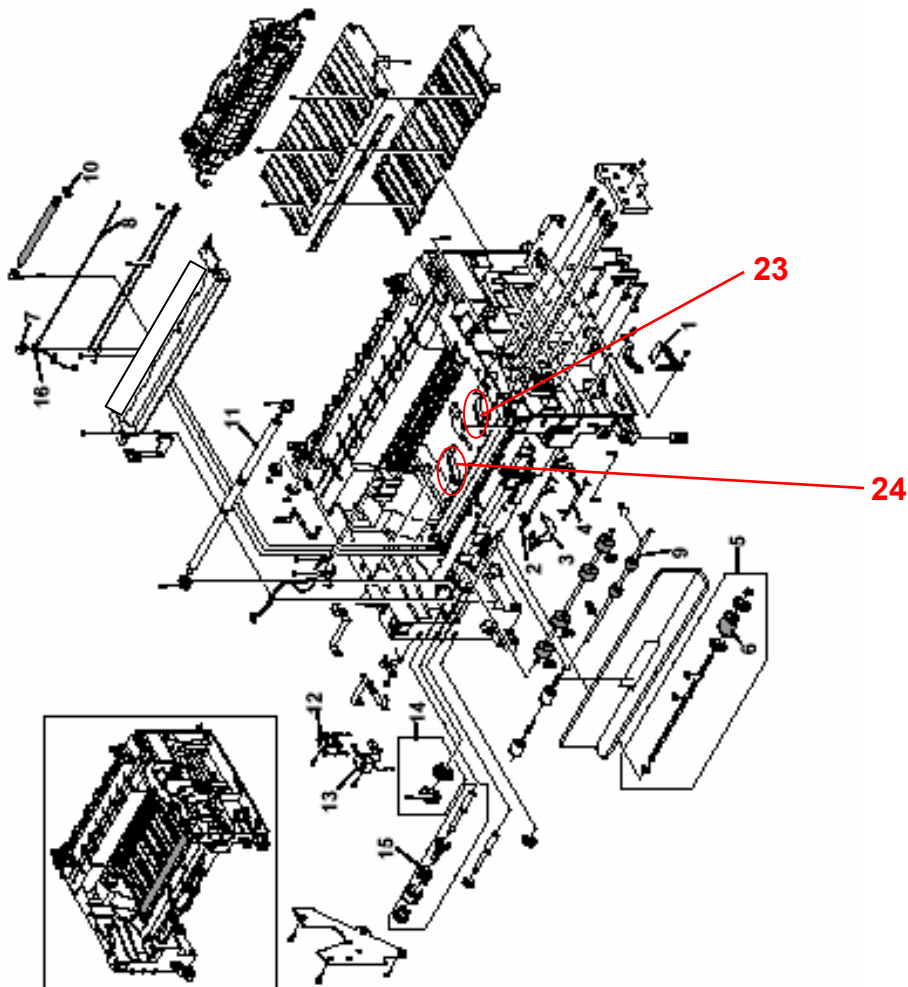
<B173> (Model C-C1)

NEW part number	Description	Q'ty	Int	Page	Index	Note
G1449691	PLATE GUIDE RIGHT	0→1	-	13	23	
G1449693	PLATE GUIDE LEFT	0→1	-	13	24	

Change: These parts were added.

Reason: A request was received from the field.

7. FRAME ASSEMBLY



8/13/08/2/0000

Model: Model C-C1		Date: 22-Sep-08	No.: MB173026
Modified Article: Parts Catalog Correction		Prepared by: T. Shintani	
From: 1st Tech. Support Sec. Service Support Dept.			
Reason for Modification:	<input type="checkbox"/> Parts catalog correction <input type="checkbox"/> Vendor change <input type="checkbox"/> Other <input type="checkbox"/> To facilitate assembly <input type="checkbox"/> To improve reliability <input type="checkbox"/> To meet standards <input checked="" type="checkbox"/> Part standardization <input type="checkbox"/> Product Safety ()		

<B173> (Model C-C1)

Old part number	New Part number	Description	Q'ty	Int	Page	Index	Note
B1739533	G9601458	IDLE ROLLER - ADF	1	-	7	2	-
B1739580	G9601197	PINCH ROLLER	2	-	7	19	-
B1739685	G9601315	GEAR-IDLE 35 ADF	1	-	7	30	-
B1739686	G9601435	GEAR-40/21 ADF	1	-	7	31	-
B1739687	G9601314	GEAR-SWING 31/20 ADF	1	-	7	32	-
B1739688	G9601313	GEAR-58/25 ADF	1	-	7	33	-

Change/Reason: Parts standardization with Model CM-C2.



Part Change Information List

Date: April 30, 2009

Model	Code	PCIL Number	PCIL Correction	Old part number	New part number	Description	Old Q'ty	New Q'ty	Int	3DPC	Page	Index	Set	Set Int	RTB	Note	Ref Number
Capri-C1	B173	200904		B1739513		TRANSFER ROLLER ASS'Y	1	0			3	10			Y		V0803221
Capri-C1	B173	200904			B1739801	GEAR - TRANSFER	0	1			3	14			Y		V0803221
Capri-C1	B173	200904			B1739802	ROLLER - TRANSFER	0	1			3	15			Y		V0803221
Capri-C1	B173	200904			B1739803	SPACER - TRANSFER	0	1			3	16			Y		V0803221



Part Change Information List

Date: July 31, 2009

Model	Code	PCIL Nr.	PCIL Correction	Old part number	New part number	Description	Old Q'ty	New Q'ty	Int	3DPC	Page	Index	Set	Set Int	RTB	Note	Ref. Nr.
C-C1	B173	200907			G9601016	SPRING - CASSETTE	0	2			15	9			Y		V0901641



Part Change Information List

Date: Jun 30, 2010

Model	Code	PCIL Nr.	PCIL Correction	Old part number	New part number	Description	Old Q'ty	New Q'ty	Int	3DPC	Page	Index	Set	Set Int	RTB	Note	Ref. Nr.	ECN Nr.
C-C1	B173	201006		G1861203	G1861203	SPRING - GUIDE:JC6170932A	1	2			13	25			RB173006		V1001085	
C-C1	B173	201006			G1861203	SPRING - GUIDE:JC6170932A	0	1							RB173006		V1001015	



Part Change Information List

Date: September 30, 2010

Model	Code	PCIL Nr.	PCIL Correction	Old part number	New part number	Description	Old Q'ty	New Q'ty	Int	3DPC	Page	Index	Set	Set Int	RTB	Note	Ref. Nr.	ECN Nr.
C-C1	B173	201009			G9601101	IDEAL GEAR MA ASS'Y	0	1			13	25			Y		V1001927	



Part Change Information List

Date: October 29, 2010

Model	Code	PCIL Nr.	PCIL Correction	Old part number	New part number	Description	Old Q'ty	New Q'ty	Int	3DPC	Page	Index	Set	Set Int	RTB	Note	Ref. Nr.	ECN Nr.
C-C1	B173	201010			B1739805	ROLLER EXIT	0	2			14	5			RB173007		V1001395	
C-C1	B173	201010			B1739806	SPRING FUSER EXIT	0	2			14	6			RB173007		V1001395	



Part Change Information List

Date: March 31, 2011

Model	Code	PCIL Nr.	PCIL Correcti on	Old part number	New part number	Description	Old Q'ty	New Q'ty	Int	3DPC	Page	Index	Set	Set Int	RTB	Note	Ref. Nr.	ECN Nr.
C-C1	B173	201103			G9601107	FEED ROLLER		1			13	26			RB173009			



Part Change Information List

Date: June 30, 2011

Model	Code	PCIL Nr.	PCIL Correction	Old part number	New part number	Description	Old Q'ty	New Q'ty	Int	3DPC	Page	Index	Set	Set Int	RTB	Note	Ref. Nr.	ECN Nr.
C-C1	B173	201106		H9149724	G9601137	End Fense	1	1	O/O		9	3					V0700910	



Part Change Information List

Date: July 2, 2015

Model	Code	PCIL Number	PCIL Correction	Old part number	New part number	Description	Old Q' ty	New Q' ty	Int	3DPC	Page	Index	Set	Set Int	RTB	Note	Ref Number	ECN Number
C-C1	B173	201506		H9149719	G9601127	LEFT SIDE FENCE:JC7000300F	1	1	O/O	N	9	4					V0700910	
C-C1	B173	201506		H9149720	G9601128	RIGHT SIDE FENCE:JC7000301F	1	1	O/O	N	9	5					V0700910	